



ALL-NEW ST-20/25 Series



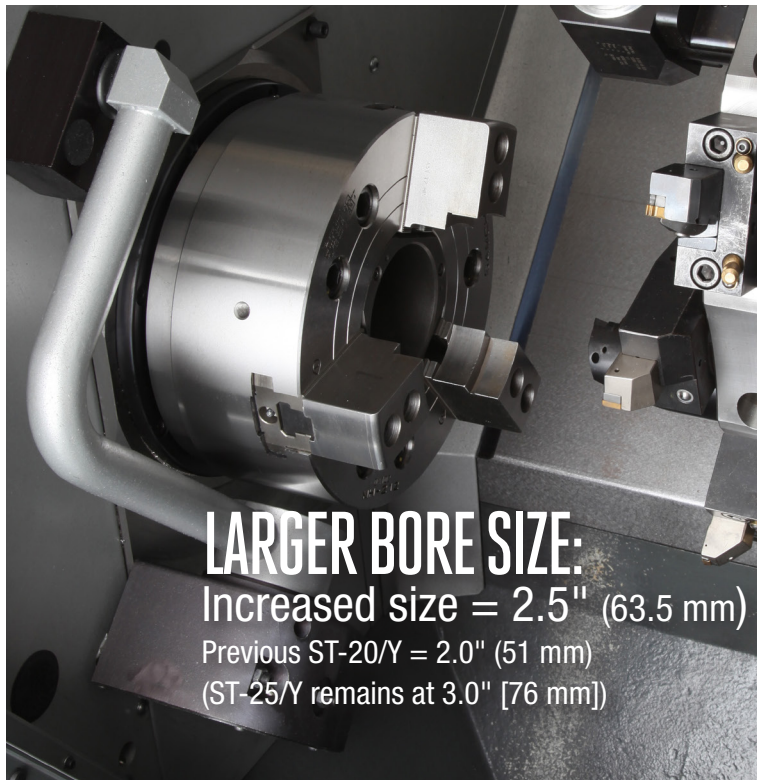
TOTALLY REDESIGNED

- *New castings – rigid structure, compact footprint*
- *11% smaller footprint*
- *Larger spindle bore (ST-20/Y)*
- *Increased Z-axis travel*

ST-20/Y	/	8.3"	/	2.5"	/	4k	/	20 hp
MODEL		CHUCK		BAR		RPM		POWER

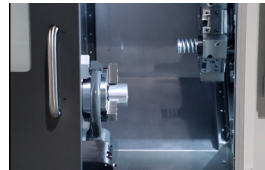
ST-25/Y	/	10"	/	3.0"	/	3.4k	/	30 hp
MODEL		CHUCK		BAR		RPM		POWER

IMPROVED WITH YOU IN MIND



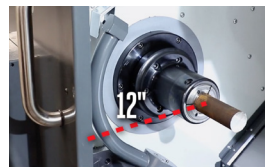
Work Envelope

- **22.5" Z-Axis Travel** (572 mm)
1.5" (38 mm) MORE Z-Travel
- **15" Max Cutting Diameter*** (381 mm)
- **22.5" Max Cutting Length**** (572 mm)



Auto Door: Standard

- Minimize operator fatigue
- **Reliable** drive system
- Opens with an **M-Code** or **push button**



Load Parts Easier

- **Reduced distance** to the chuck
- Distance = **12"** (305 mm)

* 11.75" (298 mm) for Y models and BMT65 turret.

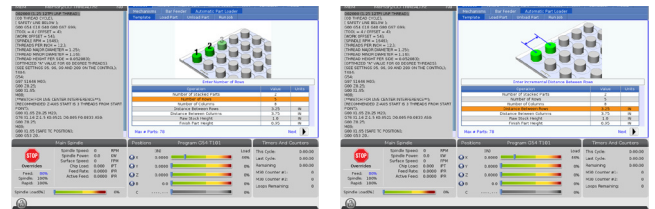
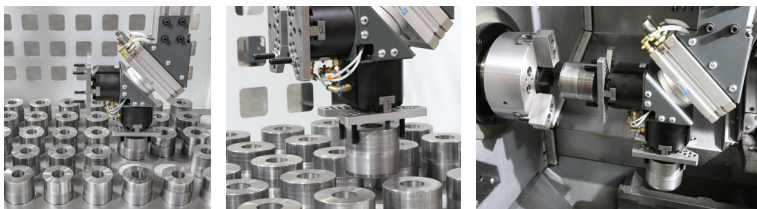
** Max cutting length varies with workholding.

LOADING AND UNLOADING PARTS FOR UNATTENDED MACHINING



Our Automatic Parts Loader is a simple and affordable way to automate part production and boost productivity on Haas turning centers. It is designed and built exclusively for use on ST-10 through ST-25 turning centers, and connects directly to the Haas control.

- **All-inclusive design**, with plug-and-play capabilities
- **Interfaces directly** with the Haas control
- Accommodates parts up to **Ø5.8" x 5" x 10 lb** (Ø147 x 127 mm x 4.5 kg)
- Includes light curtain for safe operation



APL Part Management – Part management on the APL table is done using one of three included templates. Various part shapes – such as round, hex, and square – can be loaded, and grippers can be adjusted or modified to best fit your parts.

Easy-to-Use APL Interface – Our easy-to-use APL interface uses simple, step-by-step instructions to help the operator “teach” the APL the correct positions for picking up, loading, and unloading parts.



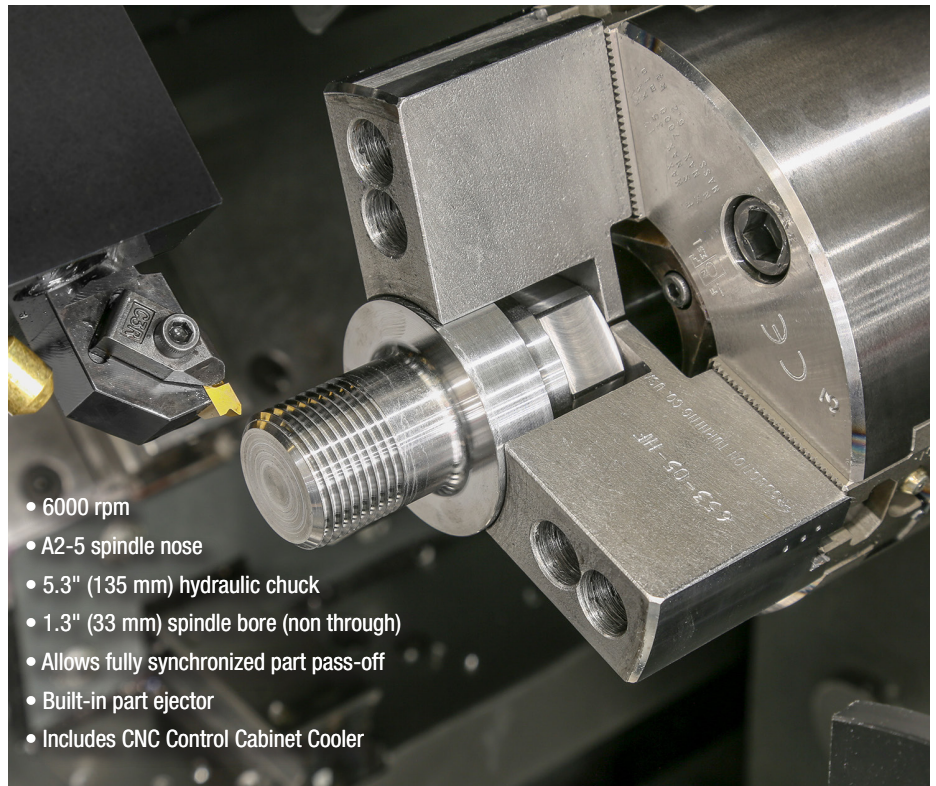
Haas Automation, Inc.
All-New ST-20/25 Series

A2-5 FINISHING SUB-SPINDLE

Our finishing sub-spindle will not only make you more productive, but also will provide new options for finishing the 2nd-op side of your parts.

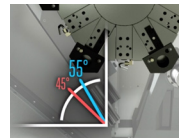
This affordable A2-5 spindle is equipped with a 5.3" (135 mm) hydraulic chuck, and will fully synchronize with the main spindle to provide effortless "in-cycle" part handoff. This allows you to finish both sides of your part in a single setup – simply load your raw workpiece, and the next time you open the door, you'll have a finished part. A built-in part ejector propels the finished part into the optional parts catcher for automated operation.

Note: Not compatible with the tailstock option.



- 6000 rpm
- A2-5 spindle nose
- 5.3" (135 mm) hydraulic chuck
- 1.3" (33 mm) spindle bore (non through)
- Allows fully synchronized part pass-off
- Built-in part ejector
- Includes CNC Control Cabinet Cooler

LATHE TURRETS



Increased Wedge Angle

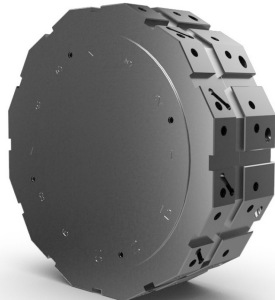
A steeper wedge angle provides a more compact footprint, and better chip flow.

TWO AXIS Non-Live Tooling



BOT TURRET STD

- Super-rigid mounting of turning tools and boring bars.
- Industry-standard bolt-on toolholders around the perimeter, and radial slots on the face



BMT65-12 TURRET OPT

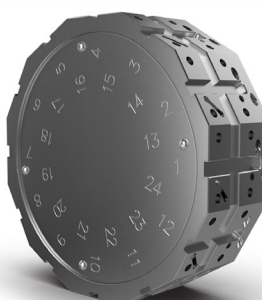
- Industry-standard BMT65 tooling connections
- Provides additional clearance for tailstock operations
- Increases setup flexibility
- Includes tooling kit

Y-AXIS with Live Tooling



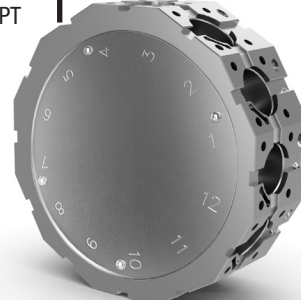
VDI TURRET STD in EU

- 12-station VDI40
- Accepts live-tooling heads (with the live tooling option)
- Single locking wedge secures the toolholders in the turret for quick, easy setups



BMT65-24 OPT

- Half-station indexing increases your available tool stations to 24
- Increases setup flexibility
- Includes tooling kit, with half-index holders



BMT65-12 TURRET STD on Y Models

- Industry-standard BMT65 tooling connections
- Provides additional clearance for tailstock operations
- Increases setup flexibility
- Includes tooling kit



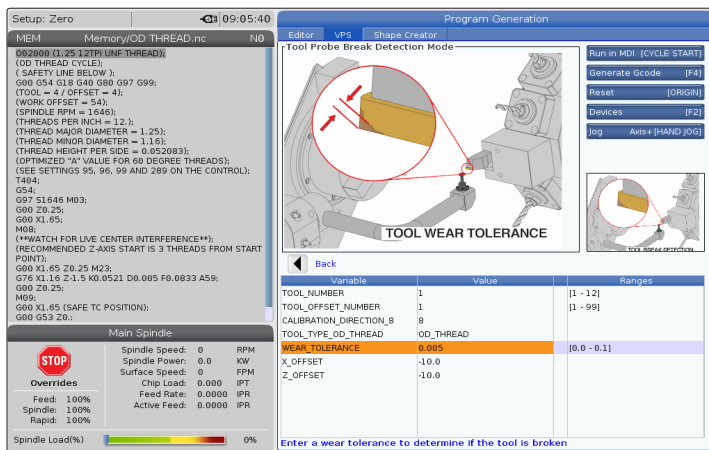
BMT65-24 OPT

- Half-station indexing
- Industry-standard BMT65 tooling connections
- Significantly increases the turret tooling capacity
- Increases setup flexibility
- Includes tooling kit, with half-index holders

Specifications subject to change without notice. Machines shown with optional equipment. Product appearance may differ. Not responsible for typographical errors.

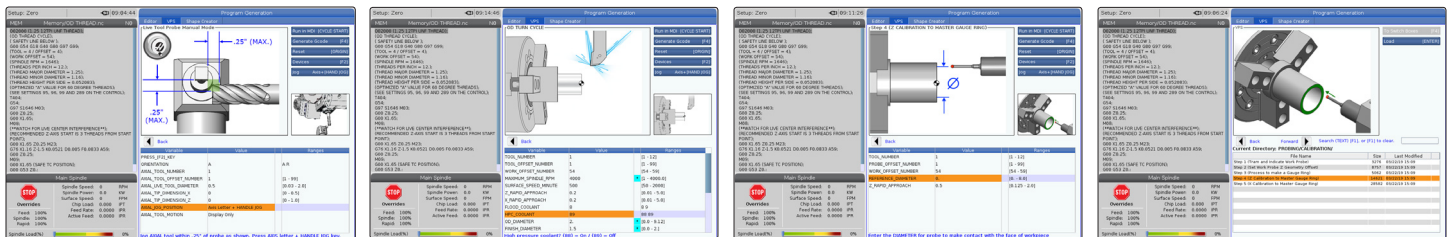
www.HaasCNC.com

UNLOCK YOUR MACHINE'S POTENTIAL



VISUAL PROGRAMING SYSTEM

The Haas Visual Programming System uses graphical templates and a form-like interface to help you quickly create G-code programs for not only basic part features, but also more complex operations, like Y-axis milling/drilling, probing, and more. Simply define the feature in the template, and VPS then outputs working G-code at the touch of a button. VPS also includes a custom template generator, so you can create templates for your own part features or frequently used programs.



SPECIFICATIONS

Capacities	ST-20	ST-20Y	ST-25	ST-25Y
Chuck Size	8.3" (210 mm)	8.3" (210 mm)	10" (254 mm)	10" (254 mm)
Max Cutting Dia. (BOT turret)	15" (381 mm)	—	15" (381 mm)	—
Max Cutting Dia. (BMT65 turret)	11.75" (298 mm)	11.75" (298 mm)	11.75" (298 mm)	11.75" (298 mm)
Max Cutting Length (varies w/workholding)	22.5" (572 mm)	22.5" (572 mm)	22.5" (572 mm)	22.5" (572 mm)
Bar Capacity	2.5" (63.5 mm)	2.5" (63.5 mm)	3.0" (76 mm)	3.0" (76 mm)
Max Part Swing	21" (533 mm)	21" (533 mm)	21" (533 mm)	21" (533 mm)
Turret				
Type Std (Opt)	BOT (VDI, BMT65)	BMT65	BOT (VDI, BMT65)	BMT65
Number of Tools	12 std / 24 opt	12 std / 24 opt	12 std / 24 opt	12 std / 24 opt
Live Tooling	4k opt / 6k opt	4k std / 6k opt	4k opt / 6k opt	4k std / 6k opt
Spindle				
Max Speed	4000 rpm	4000 rpm	3400 rpm	3400 rpm
Max Motor Rating	20 hp (14.9 kW)	20 hp (14.9 kW)	30 hp (22.4 kW)	30 hp (22.4 kW)
Spindle Nose	A2-6	A2-6	A2-6	A2.6
Travels				
X Axis	8.4" (213 mm)	8.4" (213 mm)	8.4" (213 mm)	8.4" (213 mm)
Y Axis	—	±2" (±51 mm)	—	±2" (±51 mm)
Z Axis	22.5" (572 mm)	22.5" (572 mm)	22.5" (572 mm)	22.5" (572 mm)

Haas Automation, Inc. | www.HaasCNC.com | 800-331-6746 | Made in U.S.A.

Specifications subject to change without notice. Not responsible for typographical errors. Machines shown with optional equipment.

Actual product appearance may differ. Pricing subject to change without notice.

