



Network Manager

Network Manager™ Network Manager empowers companies to reimagine the role geospatial technology plays in their business. It replaces complex, centralized, legacy GIS with a flexible, open approach that is simple to deploy and cost-effective to operate. Network Manager accelerates productivity and collaboration by streamlining the planning, design, and construction processes for telecoms network operators.

With Network Manager, designers, operations managers and construction project leaders have the scalable, enterprise solution they need to design, construct and maintain their constantly evolving network infrastructure. At the same time, the mobile-first architecture provides field engineers with simple access to essential project details from their mobile phone or tablet. They can quickly and easily capture as-built information, closing the data gap between the field and office.

Using a reality-centric approach that creates a living digital twin of the physical network assets, Network Manager accelerates design productivity and promotes greater collaboration between office-based designers and field engineers. IQGeo's end-to-end enterprise solution provides a near real-time, accurate view of network assets that saves time and money, while improving safety and enhancing customer satisfaction.

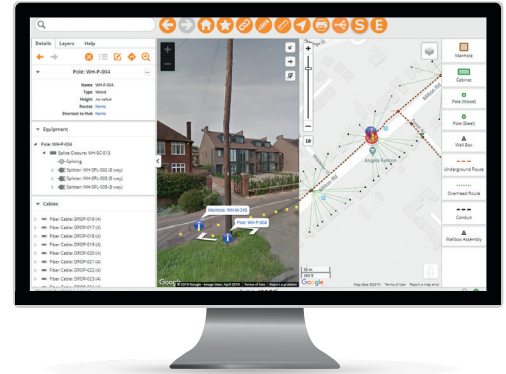
Business process transformation

Network Manager is part of a suite of application-specific products that sit on top of the powerful IQGeo Platform. It's flexible capabilities and smart data modelling transforms Excel and paper-based operation and construction processes, delivering compelling and measurable business benefits.

Network new build

Plan and design new networks 20% faster, while optimizing network infrastructure.

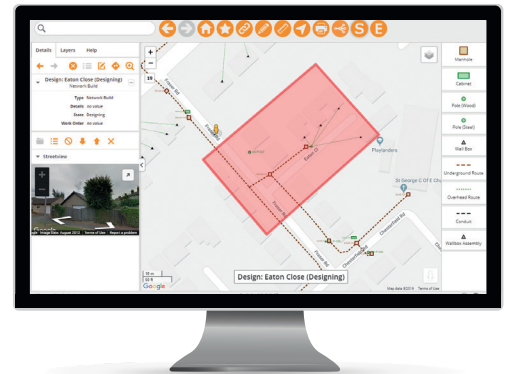
- Create fast, efficient designs
- Compare concurrent design scenarios
- Provide accurate designs that reflect field realities



New customer connection

Reduce connection times by 25%, increasing sales and decreasing field costs.

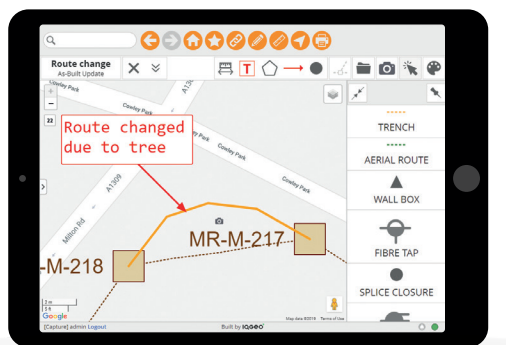
- Optimize repetitive design processes
- Accelerate time-to-service and customer NPS
- Maximize the use of network assets



Data correction

Identify and capture as-built field updates to reduce the cost of field operations.

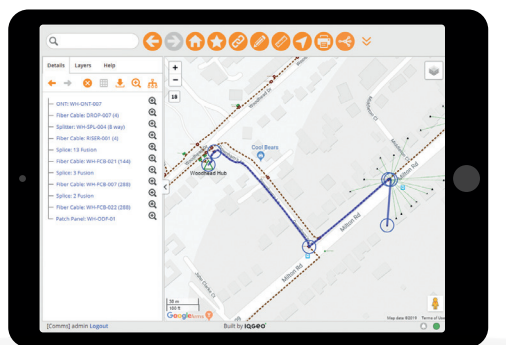
- Improve data quality and currency
- Unlock field and office collaboration
- Deliver current, accurate network view



Network repair and fault rectification

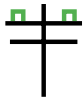
Improve maintenance productivity, fault response and customer satisfaction.

- Streamline complex maintenance processes
- Eliminate truck rolls and maintenance costs
- Reduce customer service response time, improving NPS



Product features

Simple to deploy and use, Network Manager provides a comprehensive set of planning and design features that have been created specifically to meet the needs of telecoms network professionals.



Structure network editing

Create and update structures and routes.

- Intuitive user interface – Simple and powerful drawing tools
- Auto snap – Automated cable and conduit placement to nearby structures and routes
- Intelligent connectivity rules – Configurable based on business needs
- Containment model – Efficient and simplified path for cables and conduit
- Connectivity preservation – Maintains connectivity of routes as structures are modified



Fiber network editing

Create and update equipment and cables.

- Equipment associations – Relate equipment to supporting structures
- Configurable naming scheme – Cable names are applied at placement
- Equipment connections – Define connections between fiber and equipment
- Fiber splicing – Define fiber to fiber connections



Fiber tracing

Trace through the fiber connectivity model.

- Upstream trace – Trace from equipment to hub, port and fiber connections
- Downstream trace – Trace from hub or node to see customer connections
- OTDR trace – Distance limited upstream and downstream troubleshooting and fault correction tracing



Design support

Manage proposed additions and changes to the network.

- Active version management – Segment and view proposed designs and actual as-built data
- Design status – Track design status through a configurable workflow
- Automated data integrity validation – Configurable valid values based on business rules
- Automated data conflict detection and resolution – Easily identify and resolve multiple updates to the same feature
- Design promotion – Promote designs to as-built data at completion of workflow
- Future view – Display network from proposed designs
- Concurrent design scenarios – View and collaborate on multiple active designs

IQGeo advantages

IQGeo's end-to-end geospatial software improves productivity and collaboration across enterprise planning, design, construction and maintenance processes for telecoms and utility network operators. Our mobile-first enterprise solutions create and maintain, an accurate view of complex network assets that is easily accessible by anyone, wherever and whenever needed.

Specialized applications combined with our open IQGeo Platform help network operators create a

single source of network truth to meet their digital transformation ambitions and operational KPIs. Our award-winning, cloud-enabled solutions save time and money, and improve safety and productivity, while enhancing customer satisfaction.

- Built for infrastructure companies
- Mobile-first architecture
- Open and flexible platform
- Fast and cost-effective to deploy

