

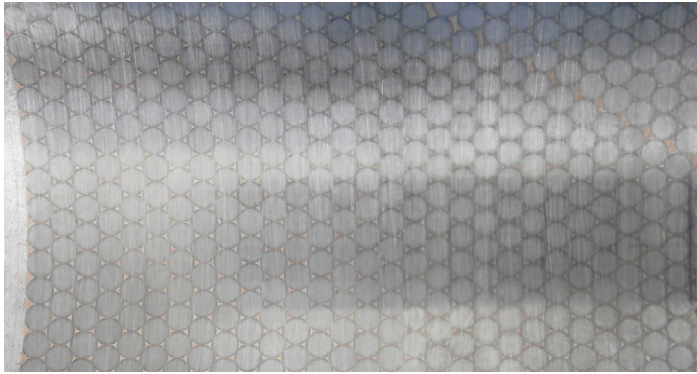


WALLCOLMONOY

# WallCarb™

## Spherical Tungsten Carbide Coating for mud motor bearings and other high wear and stress environments

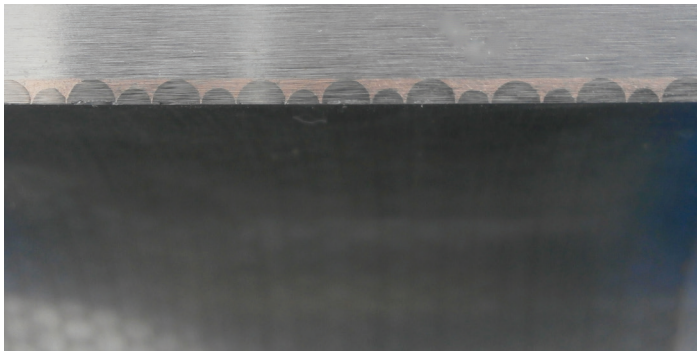
WallCarb™ provides exceptional bearing properties in the harshest working environments. Originally designed for mud motor bearings used in directional drilling, it combines the wear resistance of tungsten carbide with a tough and corrosion resistant matrix.



*Close-up of WallCarb™ showing Spherical Carbide Particles*

The success of WallCarb™ lies in the high packing density of the spherical tungsten carbide particles, which produces a bearing surface with up to 90% tungsten carbide by area. This is significantly higher than coatings produced by PTA or laser cladding.

WallCarb™ coatings are metallurgically bonded to the substrate. To ensure the highest quality and consistency, WallCarb™ coatings are applied by an automated technique.



*Cross section of tungsten carbide particles embedded in tough matrix*

### Typical Applications

- Down hole tools
- Mud motor bearings
- Twin barrel extrusion screws
- Paper and Pulp production



*Bearing with WallCarb™ coating inside*



*Mud Motor Radial Thrust Bearing*

WCL\_WallCarb-Flyer\_ENG\_0819700

The information provided herein is given as a guideline to follow. It is the responsibility of the end user to establish the process information most suitable for their specific application(s). Wall Colmonoy Limited (UK) assumes no responsibility for failure due to misuse or improper application of this product, or for any incidental damages arising out of the use of this material.

Copyright © 2019 Wall Colmonoy Limited. All rights reserved.