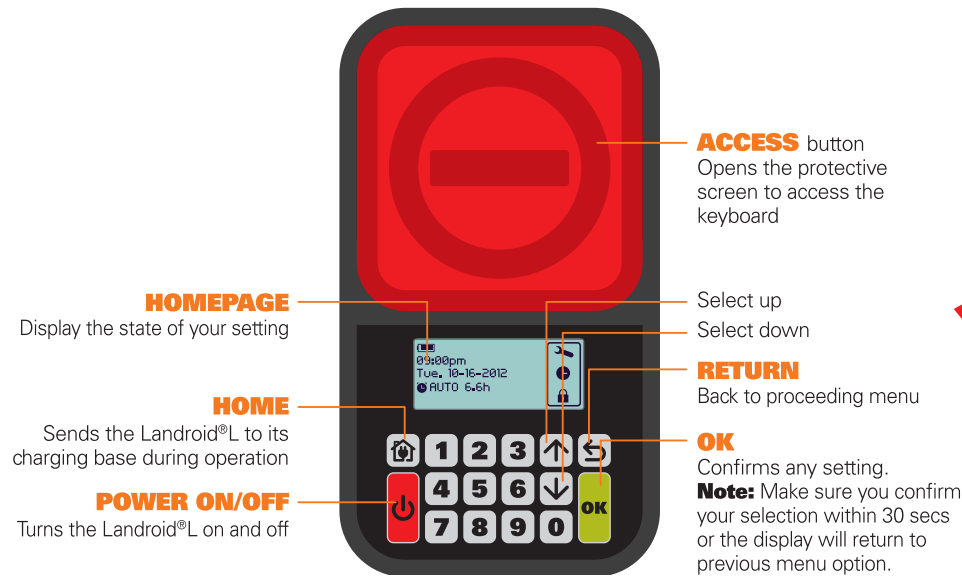


Programming and trouble shooting guide

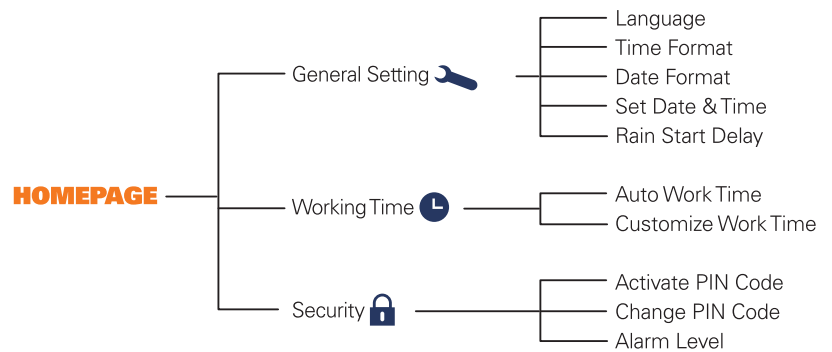
Control panel and menu

LANDROID® 
UNMANNED
MOWING
VEHICLE



Always close the keypad window after programming.
Your Landroid®L will not move with it open.



Menu overview



Programming

After you have successfully installed the Landroid®L, it is now ready to be programmed according to your schedule. To program your Landroid®L, simply follow the step by step guide below.

Start

To quick start your Landroid®L, first Open the keypad window by pressing the large red button , then Press ON/OFF button , and Close the keypad window.

The factory default setting schedule is for 1500m² (refer the mowing time schedule in table in "Work time" part), if the time is not in the schedule, press 0 to start.

If you want to change the working time and other settings, please follow the steps below:

Setting

Press **OK** to enter the submenu.

Use the   keys to select General setting, Working time or Security. Then press **OK**.

1. General setting ()



Language, Time format, Date format, Set date & time and Rain Start Delay can be set in this menu, using the   keys to select then press **OK**.

Press **S** to go back to the previous menu.

Note: Set date and Set time are two compulsory setting items. If you don't set these two items, it will influence the Schedule time in the following setting.

1.1 Language

Select the appropriate language by using the   keys, then press **OK**.

Time format

12am 12pm

24hour

Date format

MM-DD-YYYY

DD-MM-YYYY

YYYY-MM-DD

Set date & time

Date: 04-10-2012

DD-MM-YYYY

Time: 20:37

24h

Rain start delay

180 min

1.2 Time format

Select 12 am 12 pm or 24 hour by using the keys, then press **OK**.

1.3 Date format

Select MM-DD-YYYY, DD-MM-YYYY or YYYY-MM-DD by using keys, then press **OK**.

1.4 Set date & time

Press **OK** first, when the number blinking, press the number directly or use the keys to input the actual date or time, then press **OK** to confirm.

Note: Only when the number is blinking you can set the date.

1.5 Rain Start Delay

Press **OK** first, when the number blinking, input the number of minutes from 0-180 min.

When it rains, the Landroid®L will return to the charging base to wait for the rain sensors to dry. When dry, the Landroid CPU will automatically begin the delay start countdown and then return to mowing. If the delay time is set as 0, Landroid®L will continue mowing.

2. Working time ()

Working time

Auto work time

Customize work time

Auto work time

100 m2 120 yd2

200 m2 240 yd2

300 m2 360 yd2

Need total h: 6h

Auto work time

1300 m2 1550 yd2

1400 m 1680 yd2

1500 m2 1800 yd2

Need total h: 28h

Auto work time, Customize work time can be set in this menu, use the keys to select then press **OK**.

You can close the keypad window to start your Landroid®L when Customize work time programming or Auto work time programming is complete. If the time is not in the schedule, press 0 to start.

2.1 Auto work time

Use the keys to select the lawn area. The working time will be automatically set according to the size of your garden. Then press **OK**.

Note: the Landroid®L can mow an area to 1500m². Auto work time will display on the bottom of the display. A " " will appear in front of the option you selected.

You could find more details about default work time of Landroid®L in following table:

Landroid®L WG795E - Auto mowing time schedule.

Area m ²	Auto mow-ing runtime - hours	Monday mowing hours	Tuesday mowing hours	Wednesday mowing hours	Thursday mowing hours	Friday mowing hours	Saturday mowing hours	Sunday mowing hours
100	1.5	7:00-8:30	/	/	7:00-8:30	/	/	/
200	5	7:00-8:00	7:00-8:00	7:00-8:00	7:00-8:00	7:00-8:00	/	/
300	6	7:00-8:12	7:00-8:12	7:00-8:12	7:00-8:12	7:00-8:12	/	/
400	7.5	7:00-8:30	7:00-8:30	7:00-8:30	7:00-8:30	7:00-8:30	/	/
500	10	7:00-9:00	7:00-9:00	7:00-9:00	7:00-9:00	7:00-9:00	/	/
600	11	7:00-9:12	7:00-9:12	7:00-9:12	7:00-9:12	7:00-9:12	/	/
700	13	7:00-9:36	7:00-9:36	7:00-9:36	7:00-9:36	7:00-9:36	/	/
800	15	7:00-10:00	7:00-10:00	7:00-10:00	7:00-10:00	7:00-10:00	/	/
900	16.5	7:00-10:18	7:00-10:18	7:00-10:18	7:00-10:18	7:00-10:18	/	/
1000	18	7:00-10:36	7:00-10:36	7:00-10:36	7:00-10:36	7:00-10:36	/	/
1100	20	7:00-11:00	7:00-11:00	7:00-11:00	7:00-11:00	7:00-11:00	/	/
1200	22.5	7:00-11:30	7:00-11:30	7:00-11:30	7:00-11:30	7:00-11:30	/	/
1300	25	7:00-12:00	7:00-12:00	7:00-12:00	7:00-12:00	7:00-12:00	/	/
1400	26.5	7:00-12:18	7:00-12:18	7:00-12:18	7:00-12:18	7:00-12:18	/	/
1500	28	7:00-12:48	7:00-12:48	7:00-12:48	7:00-12:48	7:00-12:48	/	/

2.2 Customize work time

You can set schedule time from Monday to Sunday.

Press **OK** first, when the number is blinking, input the start time and hours you want your Landroid®L mow on a particular day.

If you do not want the Landroid®L to mow on a particular day simply confirm the hours 0.0h.

Working time adjustment

If you are still not satisfied with the time you set, there's a shortcut to adjust the working time.

When the Landroid is in standby mode, use the keys to adjust the working time. The overall working time will be adjusted in increment of 10% of the overall working time.

Start time Hours

Mon 07:00 ~ 5.6h

Tue 07:00 ~ 5.6h

Wed 07:00 ~ 5.6h

Start time Hours

Fri 09:00 ~ 5.0h

Sat 00:00 ~ 0.0h

Sun 00:00 ~ 0.0h

09:00pm

Wed, 6-8-2012

MTWTFSS

7:00am ~ 12:00am

Working time adjust

-10%

3. Security ()

Security

Activate PIN code

Change PIN code

Alarm level

Activate PIN code

No

Yes

Security

Activate PIN code

Change PIN code

Alarm level

Change PIN

Old PIN: * * * *

New PIN: _ _ _ _

Repeat New PIN: _ _ _ _

Change PIN

PIN code changing success

Alarm level

High

Low

Use the keys to select Activate PIN code, Change PIN code and Alarm level, then press **OK**.

3.1 Activate PIN code

Select Yes to activate the PIN code.

If you don't want to activate the PIN code, just select No.

3.2 Change PIN code

Type the Old PIN (default PIN) 0000, then press **OK**.

Then type your New PIN and repeat it.

3.3 Alarm level

Use the keys to select the alarm volume setting.

High = loud setting (60~70dB)

Low = quiet setting (40~50dB)

NOTE: If you would like to turn the Landroid®L OFF in the middle of setting, then you must first press then press the .

If you input the wrong PIN code, the Landroid®L will be turned off automatically. Press key to On, input the right PIN code, then the Landroid®L will turn on again.

WARNING: If you decide to change the PIN code, be aware there's no way to restore the Landroid®L if you forget the PIN code. Please write your PIN code here and store this sheet in a safe place for future reference. Even better, register your Landroid®L online and enter your PIN code there. You will always be able to find your PIN online at www.worxlandroid.com.

If you type your PIN wrongly, Wrong PIN code is displayed. Turn your Landroid®L off and on by pressing .

The large red access button can also be used as an emergency stop. To re-start the Landroid®L, close the keypad window.

Your PIN code

Function messages

Mowing	Cutting grass according to the program set.
Raining	When it senses rain, the Landroid®L will return to the Charging Base and stay there for the time you have programmed it to do so. When dry, the Landroid®L CPU will automatically begin the delay and countdown and then return to mowing. If you want Landroid®L to mow before this, simply turn it off then on again, but only when the rain sensor is dry or you can set the delay time to 0 min.
Locating charger base	Needs a recharge - during the journey to the base, the cutting blade is stopped in order to save energy.
Charging	Charge is in progress - voltage, current, charge percentage are displayed.
Waiting for scheduled time	Stand-by, will start according to program set.

Error messages

Outside working area	<ol style="list-style-type: none">1. If the Landroid®L is actually outside its territory: open the keypad window, turn power off, take the Landroid®L inside its territory. Turn power on and close the keypad window.2. If the Landroid®L is inside its territory: check the LED on the charging base is on. If not, check the plug connection to the mains socket. If the LED is still off, check the boundary wire is well connected to the clamps on the charging base.3. If the problem persists, check that the boundary wire hasn't been cut.
Wrong PIN code	Refer to the "Programming" section to re-set your PIN
Blade disc blocked	<ol style="list-style-type: none">1. Open the keypad window.2. Turn power off.3. Turn the Landroid®L upside down and check if there's anything preventing the blade disc to rotate.4. Remove any possible obstruction.5. Turn the Landroid®L upright and take it to an area with short grass.6. Turn power on and close the keypad window.
Wheel motor blocked	<ol style="list-style-type: none">1. Open the sliding keypad window.2. Turn power off: take the Landroid®L in an area free from obstacles.3. Turn power on and close the keypad window.4. If the error message is still displayed, open the keypad window again; turn power off; turn the Landroid®L upside-down and check if there's anything preventing the wheels from rotating.5. Remove any possible obstruction, turn the Landroid®L upright, turn power on and close the keypad window.
Trapped	<ol style="list-style-type: none">1. Open the sliding keypad window.2. Turn power off.3. Take the Landroid®L in an area free from obstacles.4. Turn power on and close the keypad window.5. If the error message is still displayed, open the keypad window again; turn power off; turn the Landroid®L upside-down and check if there's anything preventing the wheels from rotating.6. Remove any possible obstruction, turn the Landroid®L upright, turn power on and close the keypad window.
Lifted up	<ol style="list-style-type: none">1. Open the keypad window, turn power off.2. Take the Landroid®L to an area clear of obstacles, turn power on and close the keypad window.3. If the error message is still displayed: open the keypad window, turn power off, turn the Landroid®L upside-down and check there's nothing trapped.4. Remove any possible object, turn the Landroid®L upright, turn power on and close the keypad window.
Upside down	Turn the Landroid®L upright. Open the keypad window then close it.
Charging Base Blocked	<ol style="list-style-type: none">1. The contact between the Charging and Contact Strips may be obstructed in some way.2. Wipe off the Charging and Contact Strips, making sure there is not an object obstructing them, then place your Landroid®L in the charging base and check that the strips make good connection.
Battery very low	<ol style="list-style-type: none">1. This means that there is low battery voltage.2. In this case you must place the mower in the Charging Base with the Landroid®L is powered off. Then press the ON/OFF button before the light turns green, and close the Keypad Window to start charging.

Notes

- **If the above error messages appear on the display, correct the problems first, then press "0" to reset.**
- Before turning power on, always check the Landroid®L is inside its territory. If not, the message "outside working area" will be displayed. This message is displayed also when the Landroid®L is sitting over the boundary wire when turned on.
- If for any reason—i.e. a party, children playing...—you want to park your Landroid®L in the charging base: press the key with the home symbol. The Landroid®L will go to its base and stay there. Please note the Landroid®L will now wait until the next scheduled mowing session. If you want to re-start it: turn power on. Landroid®L will now resume its scheduled mowing session
- If an error repeatedly occurs in the same area of your lawn, you might have a problem with the boundary wire so please refer to the previous installation instructions and check your set up with its help.
- If your lawn is divided in two separated areas, connected by a corridor less than 1m, one of which is not provided with the charging base: when the Landroid®L runs out of charge, take it manually to the charging base, turn power on, press the key with the home symbol and the charge process will start.
- If the Landroid®L runs abnormally once in a while, please try to restart it. If the problem cannot be solved, please contact WORX Service Agent for help.
- Do not wash the machine with a high pressure washer. This could cause damage to the battery or the machine.