



piphorticulture.com

ACCESSORY PRODUCTS

DRYING CART

Elevate. Cultivate. Grow.™

The Pipp Horticulture **Drying Cart** is designed to accommodate hanging plants in order to dry them out for further processing. It has adjustable cantilever-style finger attachments which allow you to configure the cart as needed. The drying cart is an essential part of the cultivation process that can provide an increase in production and help streamline your workflow.

- ▶ 65”H x 60”W x 24”D
- ▶ 14-gauge steel posts and supports.
- ▶ Finish – medium gray E-Coat finish.
- ▶ Option to upgrade to anti-bacterial & anti-microbial white powder coating.
- ▶ Ships unassembled.
- ▶ Assembles with minimal tools.
- ▶ Adjustable hang attachments, carts can utilize 1-3 levels for hanging dry plants.
- ▶ The hang attachment comes standard with 7 rods, which easily adjust along the support bracket.
- ▶ The bottom shelf is a 1/4” HDPE plastic insert with a 1/4” lip on all four sides.
- ▶ Cart has a 1,000 lbs weight capacity.



SHELF CART

Elevate. Cultivate. Grow.™

The versatile **Shelf Cart** can be used for both general storage and transporting goods. The shelf levels are adjustable and additional shelves can easily be added to the cart to customize it to suit your needs.

- ▶ 65”H x 60”W x 24”D
- ▶ 14-gauge steel posts and supports.
- ▶ Finish – medium gray E-Coat finish.
- ▶ Option to upgrade to anti-bacterial & anti-microbial white powder coating.
- ▶ Ships unassembled.
- ▶ Assembles with minimal tools.
- ▶ Comes standard with three adjustable shelves and two openings.
- ▶ Additional shelves can easily be added to cart if required.
- ▶ Shelves are a 1/4” HDPE plastic insert with a 1/4” lip on all four sides.
- ▶ Cart has a weight capacity 1,000 lbs.



COMBO CART

Elevate. Cultivate. Grow.™

The multi-purpose **Combo Cart** combines our exclusive hanging attachment for drying out plants with adjustable shelves below for general storage and transport needs.

- ▶ 65”H x 60”W x 24”D
- ▶ 14-gauge steel posts and supports.
- ▶ Finish – medium gray E-Coat finish.
- ▶ Option to upgrade to anti-bacterial and anti-microbial white powder coating.
- ▶ Ships unassembled.
- ▶ Assembles with minimal tools.
- ▶ Comes standard with 1 adjustable hanging dry level at the top level and 2 shelf levels at the middle and bottom with 1 opening.
- ▶ The hang attachment comes standard with 7 rods which easily adjust along the support bracket.
- ▶ Shelves are a 1/4” HDPE plastic insert with a 1/4” lip on all four sides.
- ▶ Additional shelves can easily be added to cart if required.
- ▶ Cart has a weight capacity 1,000 lbs.



WIRE CART

Elevate. Cultivate. Grow.™

These durable and highly functional **Wire Carts** are ideal for mobile storage requirements. The open wire construction minimizes dust/dirt accumulation and maximizes airflow as well visibility.

- ▶ Lengths: 24", 30", 36", 42", 48", 60", and 72".
- ▶ Widths: 18", 21", and 24".
- ▶ Heights: 63" and 74".
- ▶ 4 Shelves with split sleeves.
- ▶ 4 Posts.
- ▶ Posts are numbered in 1" increments for ease of assembly.
- ▶ 5" Heavy-duty non-marring swivel casters.
- ▶ Easy to transport and maneuver.
- ▶ Load capacity – up to 1,000 lbs.
- ▶ No tools required.
- ▶ Ships knocked-down.
- ▶ Most sizes can ship UPS.



Available as a
Security Cage

WIRE SHELVING

Elevate. Cultivate. Grow.™

Wire shelving offers easy access to inventory, reduces dust build-up, allows free light and air circulation, increases sprinkler effectiveness, and improves visibility. Wire shelving is available in a variety of sizes and finishes to suit your storage and space requirements.

DIMENSIONS:

18" - 24" Wide, 24" - 72" Long, 63" or 72" High

MATERIAL & FINISH

Lacquered Zinc or Chrome Finish

FEATURES & SPECIFICATIONS:

- ▶ Ships unassembled. Easily assembles without tools.
- ▶ Wire shelves have a load capacity of 600 - 800 pounds per shelf.
- ▶ 16 GA posts adjustable on 1" increments.
- ▶ Variety of shelf options include:
 - ▶ Standard Wire
 - ▶ Reverse Mat
 - ▶ Slanted
 - ▶ Cantilever
 - ▶ Wine Cradle
 - ▶ Solid Stainless Steel
 - ▶ Polymer
- ▶ Create you own efficient wire shelving storage configuration by combining a Starter with Add-On Units.



NESTING DRYING RACK

Elevate. Cultivate. Grow.™

The **Nesting Drying Rack** delivers ease of use, safety, and long life. Super heavy-duty construction combined with standard 5" swivel non-marring casters provides a 1,000 lb. total load capacity. Z-Base allows for nesting when not in use.

- ▶ RGR-350 Series: 48"L x 24"W x 72"H
- ▶ RGR-550 Series: 62 ¼"L x 24"W x 72"H
- ▶ Hang rail constructed of 14-gauge steel.
- ▶ 1 ½" Square steel tubing base.
- ▶ Chrome uprights and hang rails.
- ▶ Welded gussets at Z-base corners for added strength.
- ▶ Load capacity – up to 1,000 lbs.
- ▶ Ships knocked-down.
- ▶ Designed for easy assembly.
- ▶ 350 Series and 550 Series can ship UPS.



Nested Z-Racks



**Z-Rack with Optional
Bottom Shelf**



**Z-Rack with Optional
Middle Bar**

ELEVATE™ PLATFORM SYSTEM

Elevate . Cultivate . Grow.™

The Elevate™ Platform System is a robust, lightweight, and portable deck to allow cultivators to access Pipp's Multi-Tier Mobile Grow Racks quickly, efficiently, and most importantly - safely. This patent-pending system was designed to integrate with Pipp's Bulk Rack Shelving Systems without any modifications. The Elevate™ Platform System can be installed on new or existing mobile vertical grow racks.

- ▶ Quick and simple setup.
- ▶ Lightweight components allows one person to set up the entire system.
- ▶ Aluminum and galvanized steel components are corrosion resistant.
- ▶ Deck sections are 22" x 49" giving ergonomic access to canopy without giving up overall canopy throughout room.
- ▶ Galvanized steel support rails hold 650 lbs per pair (tested to 4x capacity per OSHA requirements).
- ▶ Purpose built support rails are adjustable and have integrated anti-dislodge protection features to keep beams secure while in use.
- ▶ Multiple people can access and work on the platform at once.
- ▶ Ladders available to cover deck heights between 30" and 120" A.F.F.
- ▶ Mobile Vertical Racking designs that incorporate a 46" or larger mobile access aisle, two separate working rows of the Elevate™ Platform System may be utilized simultaneously.



LADDERS

Elevate. Cultivate. Grow.™



Aluminum Ladder



Step Ladder



Rolling Ladder

GOWNING ROOM LOCKERS

Elevate. Cultivate. Grow.™



Box Lockers

Widths (inch)

- ▶ 6" - 12"
- ▶ 12" - 18"
- ▶ 30" - 36"
- ▶ 36" - 42"
- ▶ 42" - 48"
- ▶ 66" - 72"
- ▶ 72" - 78"



Double-Tier

Depths (inch)

- ▶ 12" - 18"
- ▶ 18" - 24"

Heights (inch)

- ▶ 72" - 78"
- ▶ 78" - 84"



Single-Tier

Standard Colors

- ▶ Sand (SND)
 - ▶ Medium Grey (MGY)
 - ▶ Black (BLK)
- Offered with or without legs.

C-THRU LOCKERS

Elevate. Cultivate. Grow.™



▲
Single -Tier



▲
Double -Tier

C-Thru Lockers offer a unique approach to storing personal belongings while allowing others to visually inspect the contents without the need to open the locker. There are roomy enough for just about any secured storage application.

SECURED STORAGE

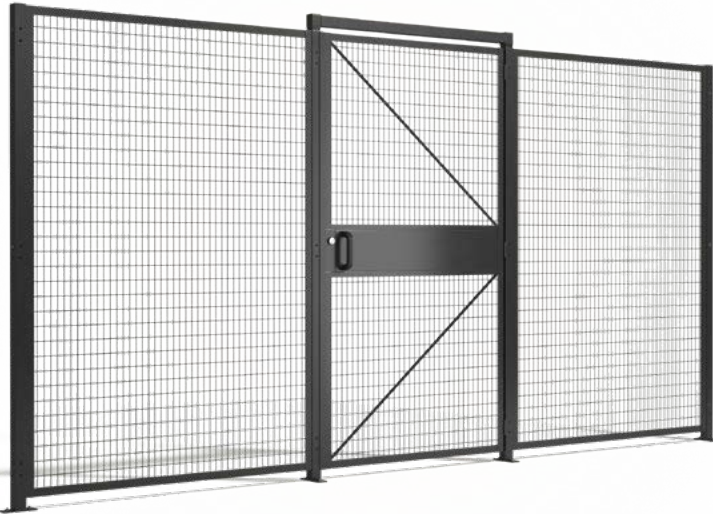
Elevate. Cultivate. Grow.™

- ▶ Robust pry-resistant doors.
- ▶ Fully welded closed tube frame.
- ▶ Three-point rod locking mechanism.
- ▶ Tamper proof hardware.
- ▶ Easy visual inspection of product with 1.5" x 1.5" grid spacing.
- ▶ Update security anytime with Interchangeable Cylinder Lock.
- ▶ Secured in place with 3/8" seismically approved concrete anchors.
- ▶ Store any size product with adjustable shelf spacing on 1-1/2" increments.



SECURED LOCK-UP

Elevate. Cultivate. Grow.™



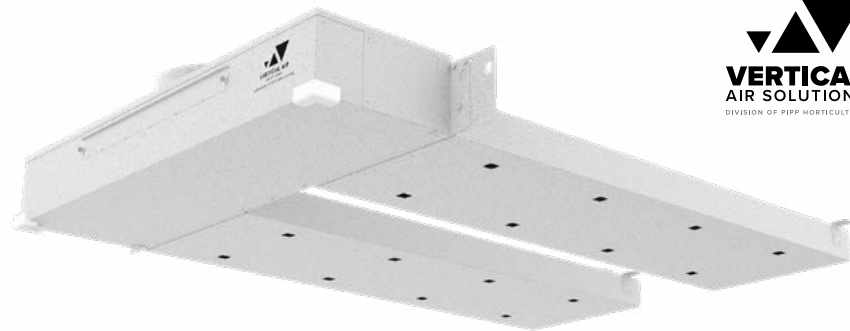
- ▶ Robust pry-resistant doors.
- ▶ Fully welded closed tube frame.
- ▶ Three-point rod locking mechanism.
- ▶ Tamper proof hardware.
- ▶ Easy visual inspection of product with 1.5" x 1.5" grid spacing.
- ▶ Update security anytime with interchangeable Cylinder Lock.
- ▶ Secured in place with 3/8" Seismically approved concrete anchors.
- ▶ Store any size product with adjustable shelf spacing on 1-1/2" increments.

AIR CIRCULATION SYSTEM

Elevate. Cultivate. Grow.™

Vertical Air Solutions' patented air circulation system provides canopies with uniform air circulation while homogenizing the atmosphere in a multi-layered rolling rack platform. Developed by growers for growers. This system provides increased air flow control, by integrating filtration and CO2 delivery for vertical farming applications.

- ▶ **Increased Savings:** VAS Air Circulation Systems, depending on the rack length, will **save 46 - 68%** in electricity costs per year, compared to circular fans, and will **pay for itself in 12 to 18 months!**
- ▶ **Increased Consistency:** Regulate environmental factors such as temperature, humidity, and CO2 levels for more consistent yields.
- ▶ **Enhanced Crop Yield:** Increase the quality of your crop at any scale by maximizing control over the indoor growing space.
- ▶ **Decreased Crop Loss:** Eliminate the risk from potential issues like powdery mold or mildew.
- ▶ **U.S. Patents**
U.S. Patent No. 10,694,682 B2
U.S. Patent No. 10,806,099 B2
Other U.S. and foreign patents pending.



FAN POWER CONSUMPTION

6" fan	.62 amps
8" fan	1.58 amps
10" fan	2.05 amps
12" fan	4.1 amps

SHIPPING CONFIGURATION

Air Mixture Chamber	Ships fully assembled
Ducts	Ships in flat sheets; requires assembly

WEIGHTS

Air Mixture Chamber	15 lbs
Ducts	16 lbs/4 ft increments

PHYSICAL DIMENSIONS

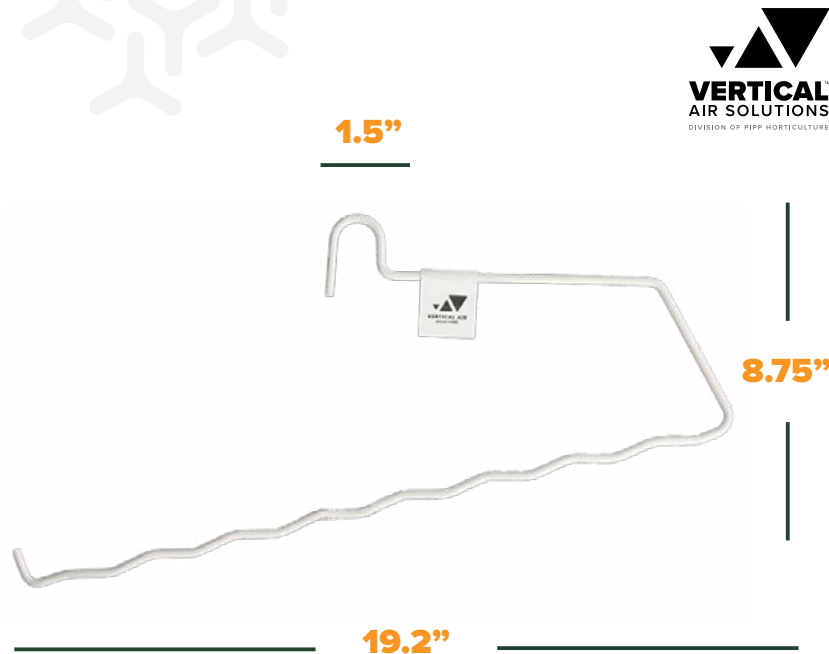
Air Mixture Chamber	41.5" wide x 8" high (including collar) x 12" deep
Ducts	16" x 3" x (4 ft increments)

VAS PLANT HANGERS

Elevate. Cultivate. Grow.™

Vertical Air Solutions' Plant Hangers specifically target the needs of cannabis cultivators. With an opening on one side, stalks are placed directly on a horizontal bar, instead of being threaded through the hanger. These hangers are also taller to allow for longer base stems and the indentations on the horizontal bar keep the plants equidistant from each other, assuring even drying and consistent yields. The sturdy, antimicrobial construction of the hangers allow for years of re-use. When combined with rolling racks that can be weighed, and go straight from flower room to drying room, the plants are touched only one time, reducing the risk of damage.

- ▶ More efficient use of labor and space by minimizing handling of the plants and getting more plants per hanger.
- ▶ Less waste due to fewer flowers being lost from multiple handling operations.
- ▶ Even drying rates for all plants, assuring a consistent product for manufacturers and users alike.
- ▶ Cost savings and a lowered environmental impact from the continuous re-use of the production-tested antimicrobial steel hangers.
- ▶ Hanger Dimensions: 19.2" width | 8.75" height | 1.5" hanger hook width
- ▶ U.S. Patent No. US D873,036 S





ELEVATE YOUR CULTIVATION



(616) 988-4044



pipphorticulture.com



info@pipphorticulture.com



[@pipphorticulture](https://www.instagram.com/pipphorticulture)