



**2 CHANNELS – MS-SR- DVBT**

**COMPONENT + HDMI**

**QUICK PROGRAMMING GUIDE**

# Important Suggestions

To Learn and operate this equipment correctly we strongly suggest you please follow these important points :

- Use a Player set to 1080i or 720p – **DO NOT USE A COMPUTER PLAYER AT FIRST**
- Use the above parameters, do not change at first
- Connect a local TV directly to this modulator through a short piece of antenna cable
- Test everything and when everything is ok, change / connect, **STEP BY STEP**, the final devices or parameters, so if one does not work, you can troubleshoot that or go back to the previous test.
- If you connect your antenna distribution and some of your TVs are not receiving or shows pixels, there is too much loss of signal on the distribution cables/splitters. Add one antenna amplifier at your splitters input to compensate their loss, or use an active splitter. If the local TV works well, all TVs must be able to do the same, unless the received signal is too low, so you need to re-amplify
- **IMPORTANT** : There could be a situation where our signal level is too high and saturates the input of following Active splitters.  
If you still have pixelization, please go to the **MODULATOR** menu, and try reducing the out level to -20 or -30 db, so there is no more saturation on the following distribution circuits
- To change the destination program number, just change the **LCN VALUES** in the **NIT** screen, per each of the program
- To find the Frequency / Channel you need for the **MODULATOR** page settings, please see the **CHANNEL FREQUENCY PDF** on this CD

Web Management

- Welcome
- Parameter
  - Input 1
  - Input 2
  - ASI Input
  - NIT
  - IP Output
  - Modulator
  - **Save/Restore**
- System
  - Reboot
  - Firmware
  - Network
  - Password
  - Backup/Load

**Save Configuration**

When you change the parameter, you should save configuration, otherwise the new configuration will be lost after reboot.

Save config

**Restore Configuration**

Load latest saved configuration, after click the "Restore" then please click the "Save config" button, otherwise the "Restore" parameter will be lost after reboot.

Restore

**Factory Set**


Set all configuration back to default, after click the "Factory Set" then please click the "Save config" button, otherwise the default parameter will be lost after reboot.

Setting ...

Factory set



Web Management

- Welcome
- Parameter
  - **Input 1**
  - Input 2
  - ASI Input
  - NIT
  - IP Output
  - Modulator
  - Save/Restore
- System
  - Reboot
  - Firmware
  - Network
  - Password
  - Backup/Load

Interface	HDMI	
Video Format	Mpeg2	
Low Latency	Mode 1	
Video BitRate	12	Mbps (1.000 - 19.500 Mbps)
Auto Config	<input checked="" type="checkbox"/>	
Resolution	1920*1080_50i	
Brightness	128	(0 - 255)
Contrast	128	(0 - 255)
Saturation	128	(0 - 255)
Hue	0	(-127 - 127)
Audio Format	Mpeg2	
Audio BitRate	192 Kbps	
Program Out Enable (AB)	<input checked="" type="checkbox"/> <input type="checkbox"/>	
Program Name	HD1	
Service ID	0x101	
PMT PID	0x100	
Video PID	0x101	
Audio PID	0x102	
PCR PID	0x103	
Video:		
Video Format:	unknown	
Encoding:		
Bitrate:	0.000 Mbps	
Rom Version:	0. a. 0. 65	

Web Management

- Welcome
- Parameter
  - Input 1
  - **Input 2**
  - ASI Input
  - NIT
  - IP Output
  - Modulator
  - Save/Restore
- System
  - Reboot
  - Firmware
  - Network
  - Password
  - Backup/Load

Interface	HDMI	
Video Format	Mpeg2	
Low Latency	Mode 1	
Video BitRate	12	Mbps (1.000 - 19.500 Mbps)
Auto Config	<input checked="" type="checkbox"/>	
Resolution	1920*1080_50i	
Brightness	128	(0 - 255)
Contrast	128	(0 - 255)
Saturation	128	(0 - 255)
Hue	0	(-127 - 127)
Audio Format	Mpeg2	
Audio BitRate	192 Kbps	
Program Out Enable (AB)	<input type="checkbox"/> <input checked="" type="checkbox"/>	
Program Name	HD2	
Service ID	0x201	
PMT PID	0x200	
Video PID	0x201	
Audio PID	0x202	
PCR PID	0x203	
Video:		
Video Format:	unknown	
Encoding:		
Bitrate:	0.000 Mbps	
Rom Version:	0. a. 0. 65	

192.168.0.136

Web Management

- Welcome
- Parameter
  - Input 1
  - Input 2
  - ASI Input
  - NIT
  - IP Output
  - Modulator**
  - Save/Restore
- System
  - Reboot
  - Firmware
  - Network
  - Password
  - Backup/Load

### Modulator Configuration

Make sure the difference between RF Frequency A and RF Frequency B is more than the value of Bandwidth, less than 32 MHz

Output A  B

RF On

Bandwidth 8 MHz

Constellation 64 QAM

Transmission Mode 2K

Guard Interval 1/32

Code Rate 7/8

RF Frequency 650.000 MHz (30.000 - 1000.000 MHz)

RF Outlevel -10.0 dBm (-10.0 - -10.0 dBm)

ASI Output Output A

Default Apply

**FIRST VIDEO IN GOES TO FREQUENCY 650 MHZ = CHANNEL 43**

**TO CHANGE CHANNEL PLEASE FIND THE FREQUENCY/CH ON THE FREQUENCY PDF ON THE CD**

192.168.0.136

Web Management

- Welcome
- Parameter
  - Input 1
  - Input 2
  - ASI Input
  - NIT
  - IP Output
  - Modulator**
  - Save/Restore
- System
  - Reboot
  - Firmware
  - Network
  - Password
  - Backup/Load

### Modulator Configuration

Make sure the difference between RF Frequency A and RF Frequency B is more than the value of Bandwidth, less than 32 MHz

Output A  **B**

RF On

Bandwidth 8 MHz

Constellation 64 QAM

Transmission Mode 2K

Guard Interval 1/32

Code Rate 7/8

RF Frequency 658.000 MHz (30.000 - 1000.000 MHz)

RF Outlevel -10.0 dBm (-30.0 - -10.0 dBm)

ASI Output Output A

Default Apply

**SECOND VIDEO IN GOES TO FREQUENCY 658 MHZ = CHANNEL 44**

**TO CHANGE CHANNEL PLEASE FIND THE FREQUENCY/CH ON THE FREQUENCY PDF ON THE CD**

Web Management

- Welcome
- Parameter
  - Input 1
  - Input 2
  - **ASI Input**
  - IP Output
  - Modulator
  - Save/Restore
- System
  - Reboot
  - Firmware
  - Network
  - Password
  - Backup/Load

### 1CH ASI Configuration (BNOG)

Input Program      Output A  B       Output Program

Passthrough  
 Multiplex

Parse timeout  seconds



Web Management

- Welcome
- Parameter
  - Input 1
  - Input 2
  - ASI Input
  - **NIT**
  - IP Output
  - Modulator
  - Save/Restore
- System
  - Reboot
  - Firmware
  - Network
  - Password
  - Backup/Load

### NIT Insert

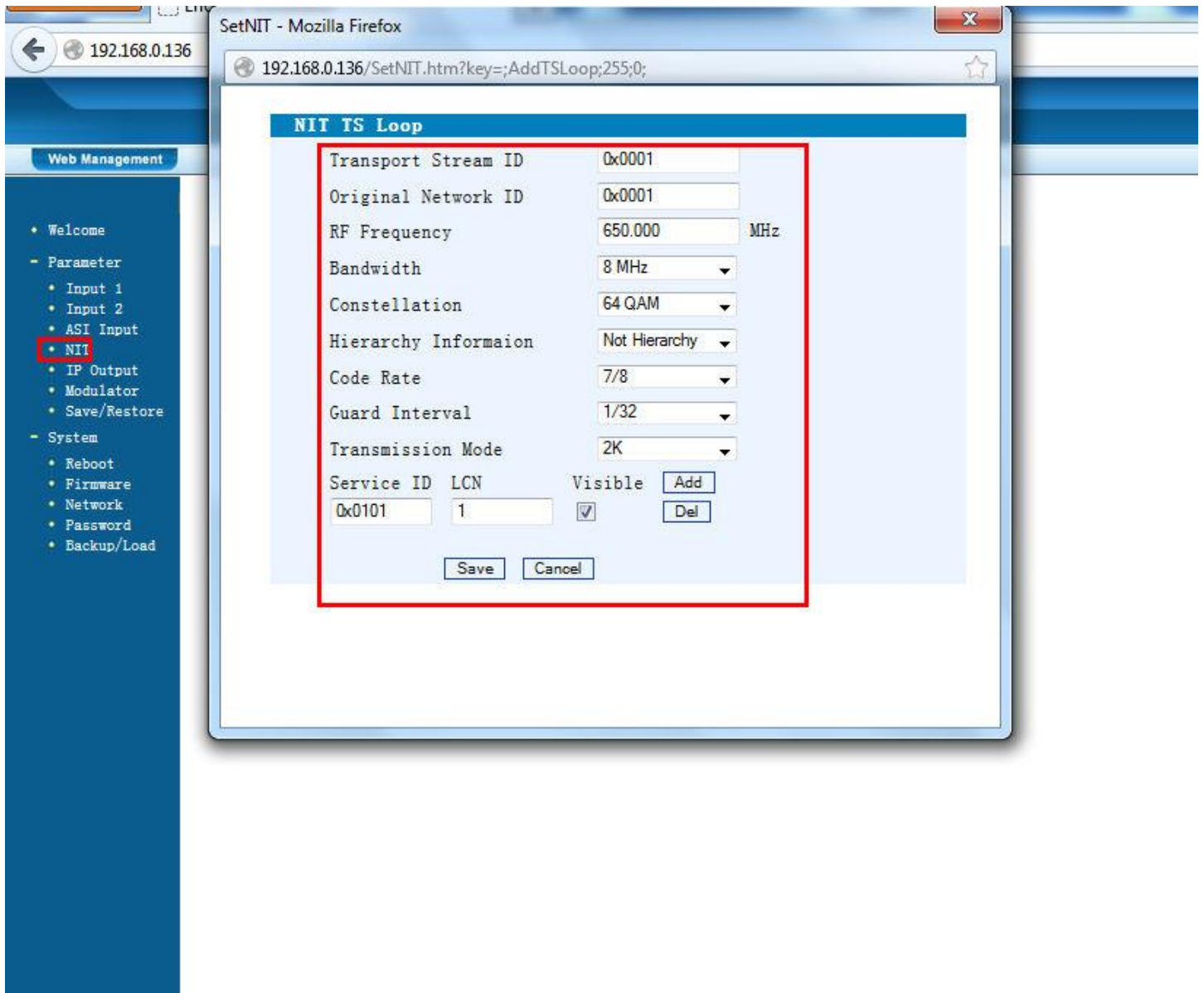
Output **A**  B

Network Name	PVI	Network ID	0x0001
Transport Stream ID	0x0001	Original Network ID	0x0001
NIT Version	1		

European  NorDig V1  NorDig V2

TSID	ONID	Freq (MHz)	Bandwidth	Const	LCN	
						<b>Add</b> Del-All

Help Update NIT Clear NIT



**THE FIRST VIDEO WILL BE STORED BY THE TV'S ON MEMORY 1 ( LCN VALUE )  
IF THE MEMORY IS ALREADY TAKEN BY ANOTHER CHANNEL, THE TV MIGHT  
MOVE THIS CHANNEL TO ANOTHER POSITION SO YOU HAVE TO REORDER ON  
THE TV MANUALLY**

Web Management

- Welcome
- Parameter
  - Input 1
  - Input 2
  - ASI Input
  - **NIT**
  - IP Output
  - Modulator
  - Save/Restore
- System
  - Reboot
  - Firmware
  - Network
  - Password
  - Backup/Load

### NIT Insert

Output A  B

Network Name	PVI	Network ID	0x0001
Transport Stream ID	0x0001	Original Network ID	0x0001
NIT Version	1		
European <input checked="" type="radio"/>	NorDig V1 <input checked="" type="radio"/>	NorDig V2 <input type="radio"/>	

TSID	ONID	Freq(MHz)	Bandwidth	Const	LCN	Add	Del-All
0x0001	0x0001	650.000	8 MHz	64 QAM	yes	Detail	Del

Help

Web Management

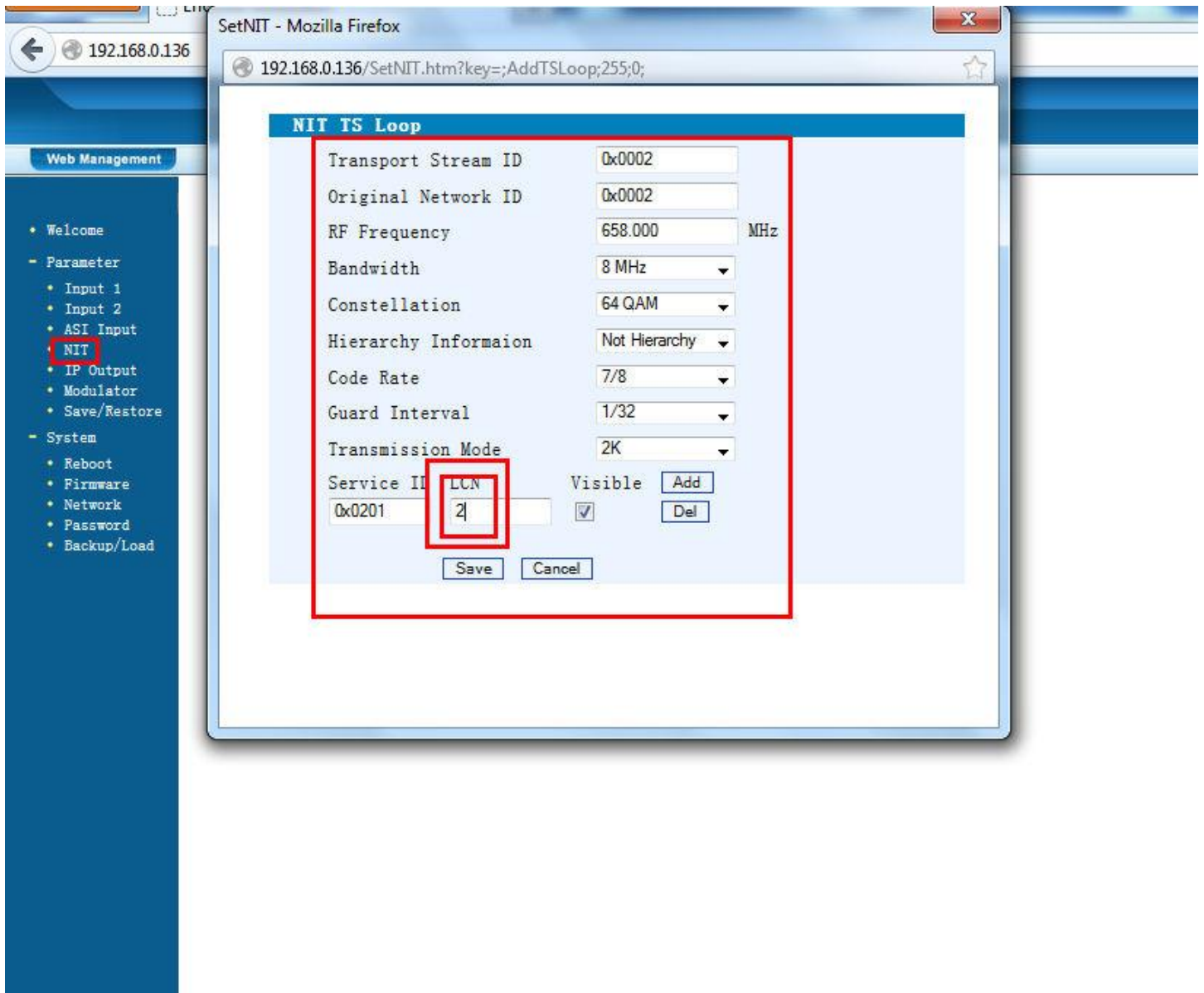
- Welcome
- Parameter
  - Input 1
  - Input 2
  - ASI Input
  - **NIT**
  - IP Output
  - Modulator
  - Save/Restore
- System
  - Reboot
  - Firmware
  - Network
  - Password
  - Backup/Load

### NIT Insert

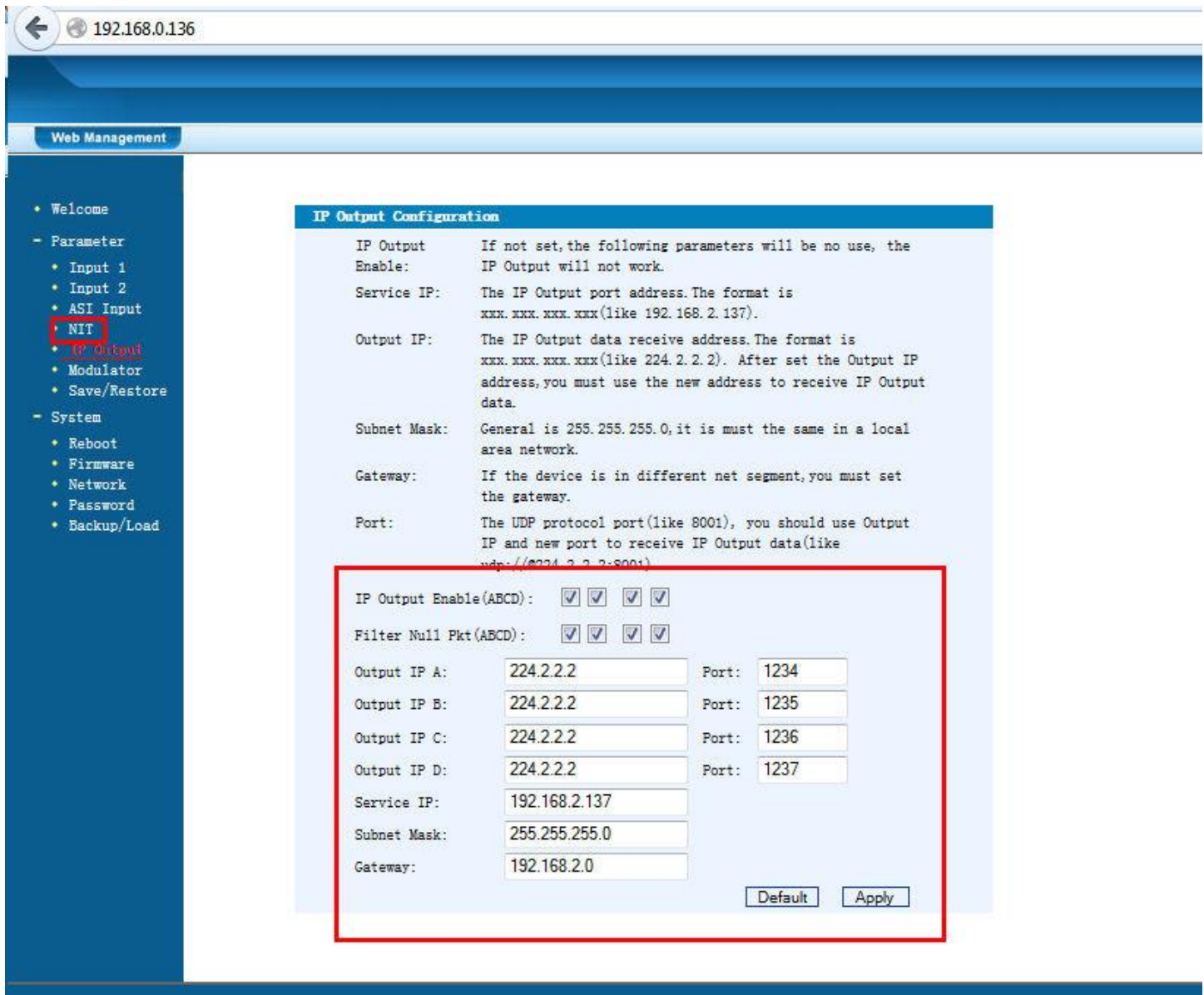
Output A  B

Network Name	PVI2	Network ID	0x0002				
Transport Stream ID	0x0002	Original Network ID	0x0002				
NIT Version	2						
European <input type="radio"/>	NorDig V1 <input type="radio"/>	NorDig V2 <input type="radio"/>					
TSID	ONID	Freq(MHz)	Bandwidth	Const	LCN	Add	Del-All

Help      Update NIT      Clear NIT



**THE SECOND VIDEO WILL BE STORED BY THE TV'S ON MEMORY 2 ( LCN VALUE ). IF THE MEMORY IS ALREADY TAKEN BY ANOTHER CHANNEL, THE TV MIGHT MOVE THIS CHANNEL TO ANOTHER POSITION SO YOU HAVE TO REORDER ON THE TV MANUALLY**



**TO PLAY IPTV ON YOUR LAPTOP :**

**A) SET YOUR LAPTOP LAN PORT TO IP ADDRESS 192.168.0.100**

**B) CONNECT THE COMPUTER DIRECTLY TO THE IPTV CONNECTOR VIA A PATCH CORD FIRST.**

**B) DOWNLOAD AND INSTALL VLC PLAYER FROM VIDEOLAN.ORG**

**C) START VLC AND CLICK ON MEDIA ON TOP RIGHT**

**D) OPEN NETWORK STREAM**

**TYPE : UDP://@224.2.2.2:1234 - This plays the first stream**

**TYPE : UDP://@224.2.2.2:1235 - This plays the second stream**

**To Use your network switch – set the MULTICAST and IGMP ON on it**

**network switch MUST BE LAYER 2 OR LAYER 3 TYPE or the streaming will jam the traffic**

**To Use your WIFI ACCESS POINT – set the MULTICAST and IGMP ON on it**

**WIFI ACCESS POINTS MUST BE TOP MODELS CAPABLE OF MULTIPLE HD STREAMING – G/N TYPE**

**FOR MORE DETIALS ON SWITCHES AND WIFI CONFIGURATION PLEASE CONTACT ITS VENDOR**

**For more configuration of our unit and please visit [WWW.PVISUPPORT.COM](http://WWW.PVISUPPORT.COM) and search for IPTV**

Web Management

- Welcome
- Parameter
  - Input 1
  - Input 2
  - ASI Input
  - NIT
  - IP Output
  - Modulator
  - **Save/Restore**
- System
  - Reboot
  - Firmware
  - Network
  - Password
  - Backup/Load

**Save Configuration**

When you change the parameter, you should save configuration, otherwise the new configuration will be lost after reboot.

Saving ...

Save config

**Restore Configuration**

Load latest saved configuration, after click the "Restore" then please click the "Save config" button, otherwise the "Restore" parameter will be lost after reboot.

Restore

**Factory Set**

Set all configuration back to default, after click the "Factory Set" then please click the "Save config" button, otherwise the default parameter will be lost after reboot.

Factory set

For additional tech support

Please visit :

[www.pvisupport.com](http://www.pvisupport.com)

login / search / print the needed guide and manual

Or Send an Email to :

[support@provideoinstruments.com](mailto:support@provideoinstruments.com)

MON-FRI 9AM-5PM EST TIME – USA

Thank you