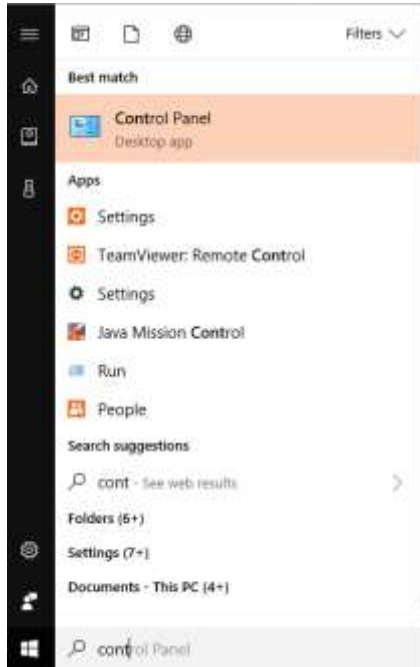


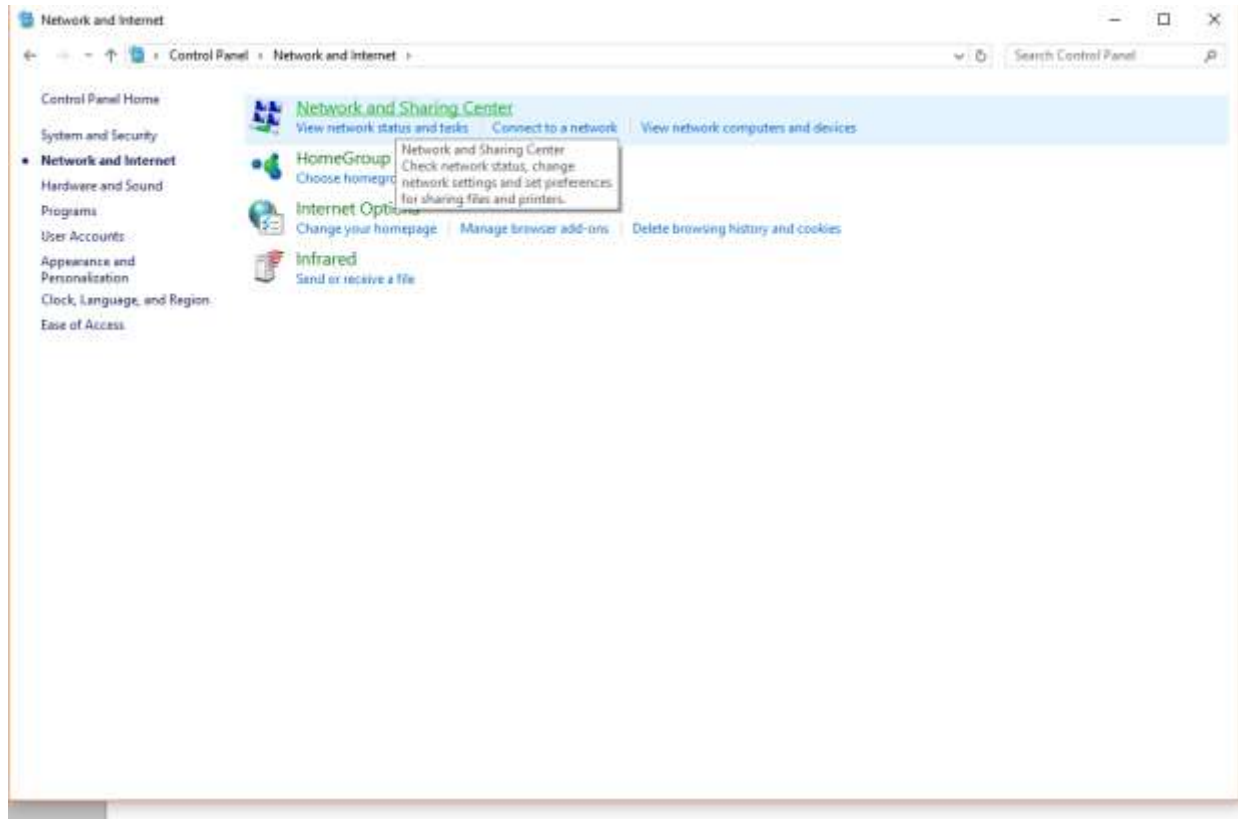
PVI - PC CONNECTION GUIDE

On Windows open your control panel



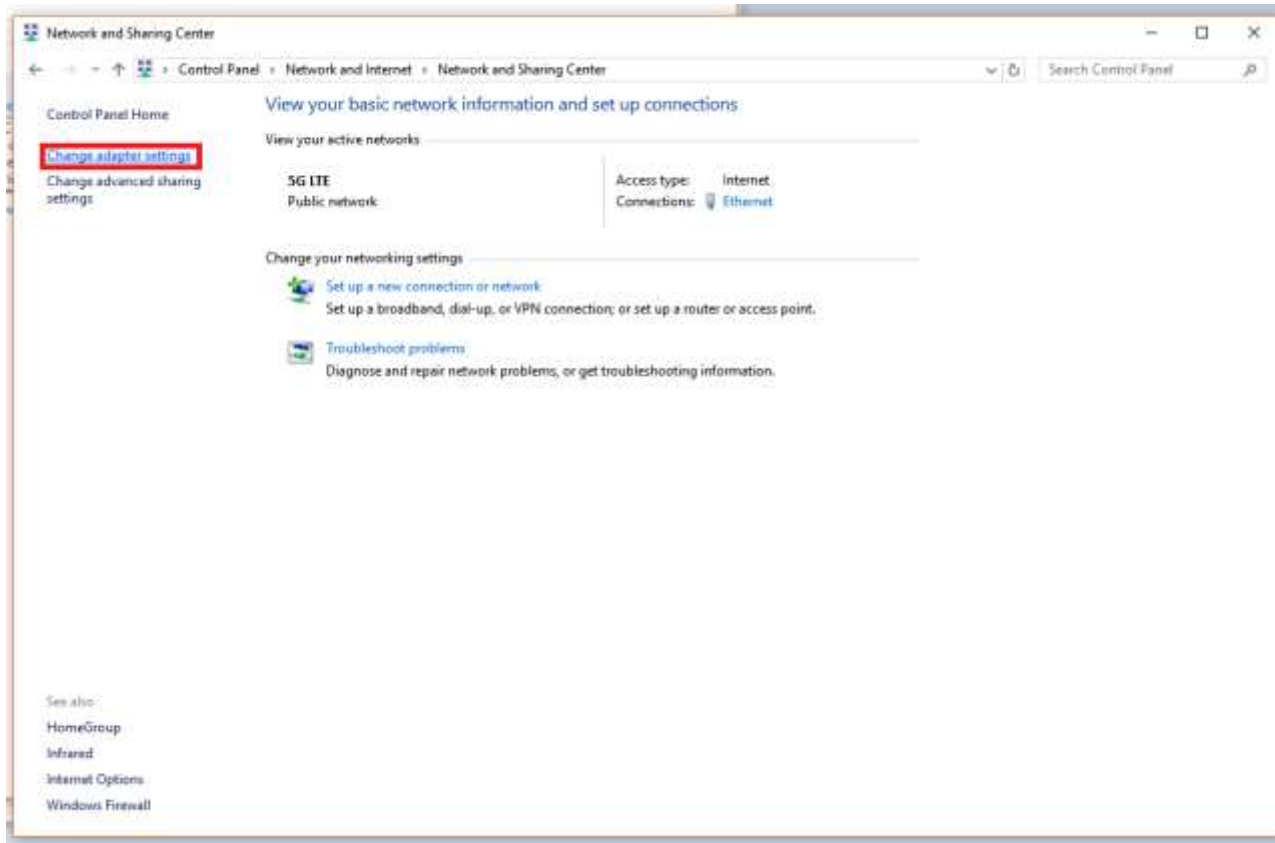
CONTINUE.....

Once on control panel, open Network and Sharing (Network and Internet for Windows 8 and above)



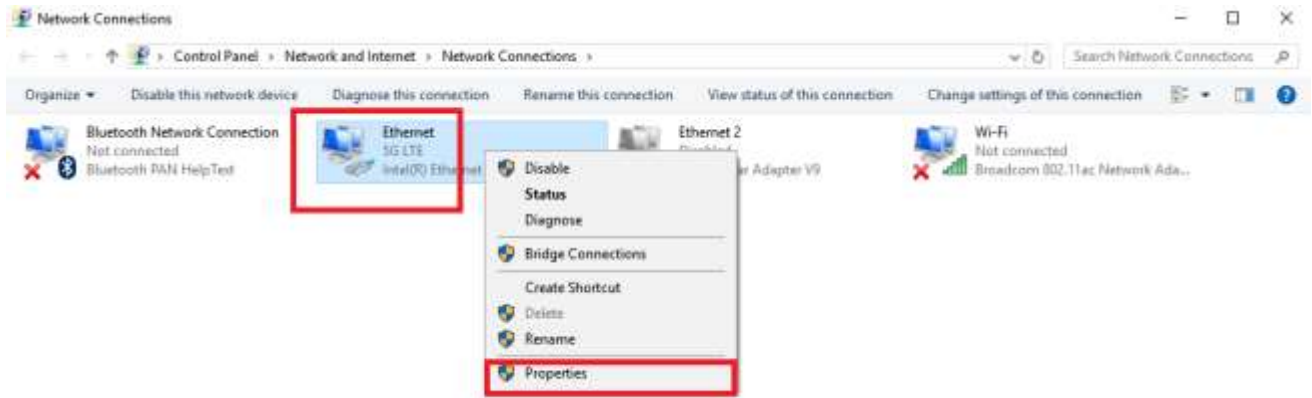
CONTINUE.....

Once you have Network and Sharing Center open, Click on “Change adapter settings.”



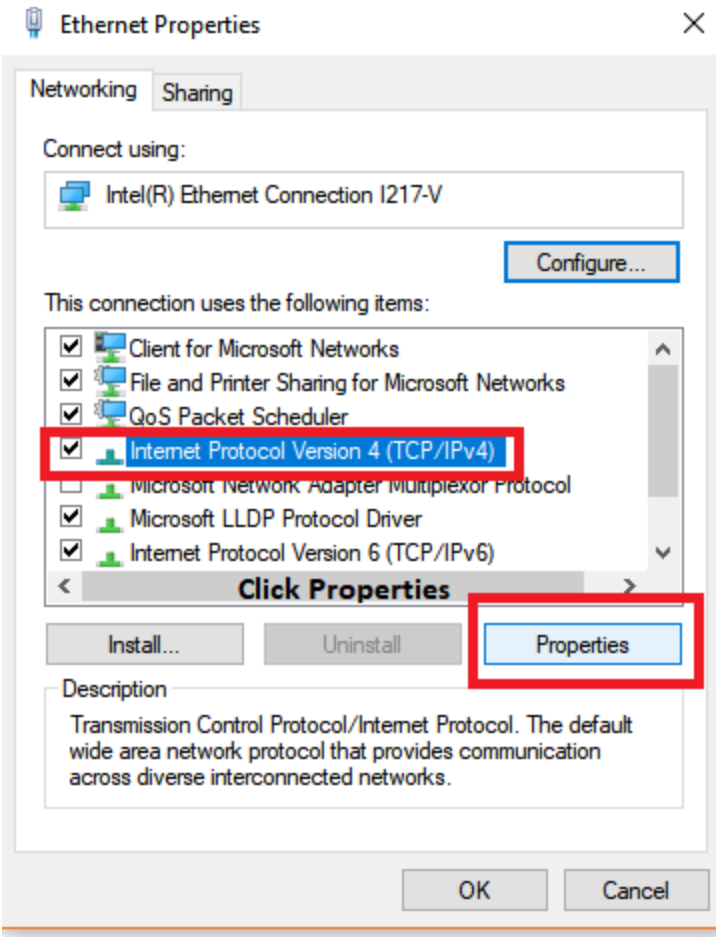
CONTINUE.....

Right Click on your Local Ethernet connection and click on “properties.”



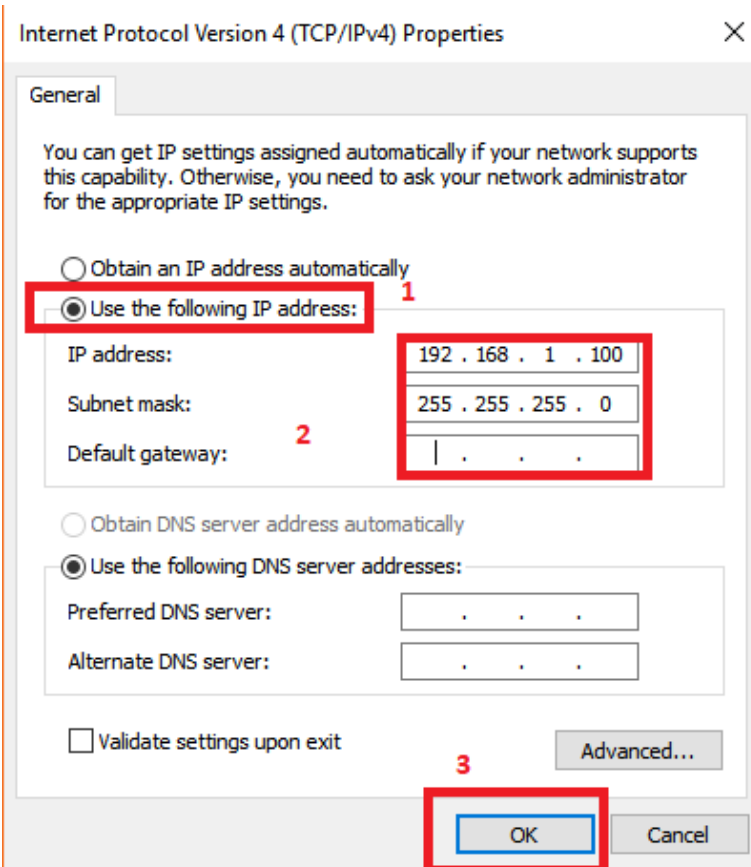
Once the Ethernet Properties are open click on, “Internet Protocol Version 4(TCP/IPv4),” and click on, “Properties.”

CONTINUE.....



In the Properties change your IP address from auto to Static and Change the IP address to the required setting to connect to your unit which will be listed in the manual of your Product. Click ok once you are done and close everything. You are now ready to connect to the Web interface of your Unit.

CONTINUE.....



Example Only. Please refer to your User manual of your Product for the IP Address you require to login to your unit.