

# Wideband Dual-Polarised Omni Antenna

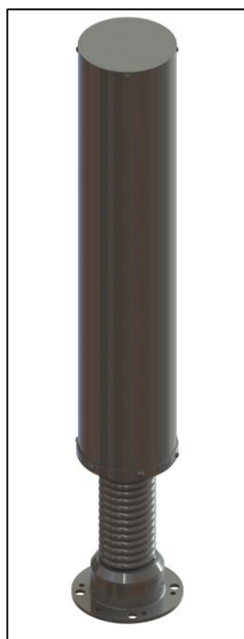
1350 – 2310 MHz

VERSION: 1.4

Product Code: OMNI-A0290



OMNI-A0290



OMNI-A0290-02

#### PRODUCT FEATURES:

- Collinear design gives improved gain
- Low VSWR across the band
- Rugged and lightweight

#### APPLICATIONS:

- Communications
- Monitoring

#### SPECIFICATIONS:

<b>Product codes:</b>	
OMNI-A0290	MIMO antenna with mast mounting bracket
OMNI-A0290-02	MIMO antenna with spring base
<b>Electrical:</b>	
Frequency range	1350 – 2310 MHz
VSWR	< 2.1
Gain	3dBi (typical) See graphs for more detail
Azimuth ripple	HP: < 1.5 dB VP: < 2.5 dB
Port-port isolation	> 40 dB
Feed power handling	10 W maximum
Polarisation	Dual Polarised
Nominal input impedance	50 Ω
Connectors	2 x N-type female
Groundplane requirements	Groundplane independent
<b>Mechanical:</b>	
Dimensions:	
OMNI-A0290:	Ø120 mm x 640 mm excluding bracket
OMNI-A0290-02:	Ø120 mm x 840 mm
Total mass:	
OMNI-A0290:	< 2.5 kg
OMNI-A0290-02:	< 4.5 kg
Mounting method	Mast-mounted
<b>Environmental: designed to meet the following specifications</b>	
Wind Survival	Designed to withstand 160 km/h
Temperature range	Designed to withstand -30 °C to +70°C
Ingress protection	Designed to IP66

#### PRODUCT DESCRIPTION:

The OMNI-A0290 is a 1.35 to 2.31 GHz dual-polarised omni-directional collinear antenna with groundplane independent radiator and wideband, high-gain performance.

The antenna utilises two collinear dipole arrays with integrated balun, making it groundplane independent and suitable for use on a mast.

# Wideband Dual-Polarised Omni Antenna

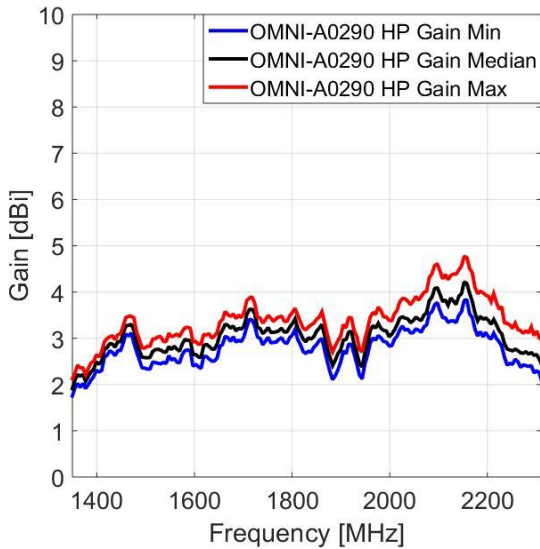
1350 – 2310 MHz

Product Code: OMNI-A0290

VERSION: 1.4

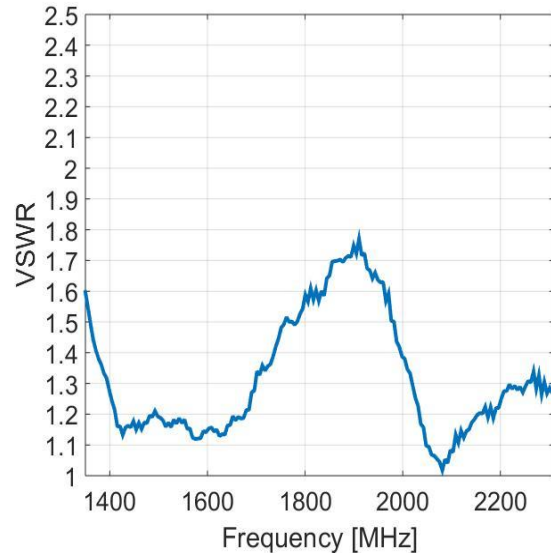
## GAIN:

### HP:

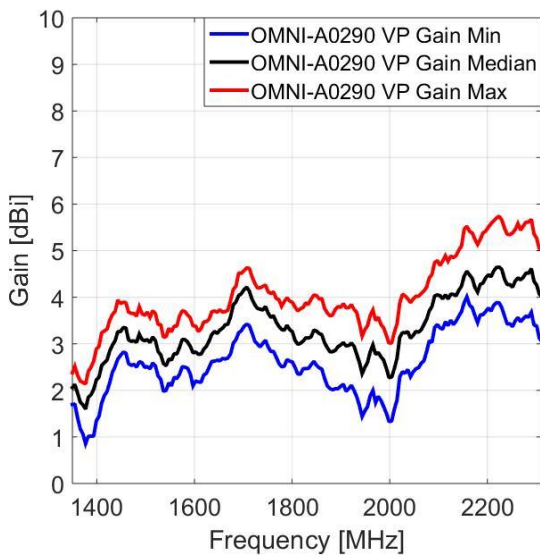


## VSWR:

### HP:



### VP:



### VP:

