

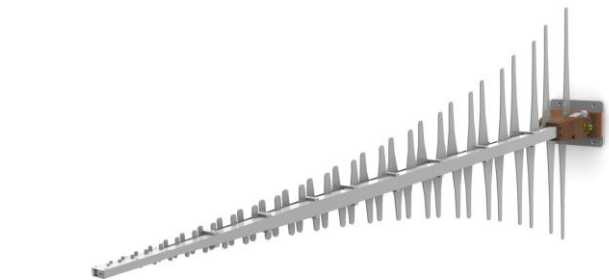
Wideband Directional Antenna

250 – 3000 MHz

Product Code: LPDA-A0005

VERSION: 2.6

SPECIFICATIONS:



Electrical:	
Frequency range	250 – 3000 MHz
VSWR	< 2:1 over 90% of band
Nominal system impedance	50 Ω
Connector	N-type female
Feed power handling	50 W
Gain	11 dBi (max) see curve
Polarisation	Linear, horizontal and vertical
Mechanical:	
Width	679 mm
Length	1703 mm
Thickness	48.3 mm
Total mass	8 kg
Material	Aluminium, stainless steel, fibreglass
Mounting method	U-bolts supplied for 60 – 100 mm masts
Environmental: designed to meet the following specifications	
Qualification	MIL-STD-810E
Wind survival	160 km/h
Temperature operational	- 31 °C to + 49 °C

FEATURES:

- Wideband coverage
- VSWR < 2:1 over 90% of band
- High gain over the band

APPLICATIONS:

- Wideband monitoring

PRODUCT DESCRIPTION:

The LPDA-A0005 is a directional log-periodic dipole array that is primarily designed for wideband monitoring applications. It covers the frequency band of 250 to 3000 MHz, and has a typical gain of 9 dBi.

The antenna can be mounted for horizontal or vertical polarisation via a bracket on a mast.

This antenna can be customised if required, for different frequency ranges.

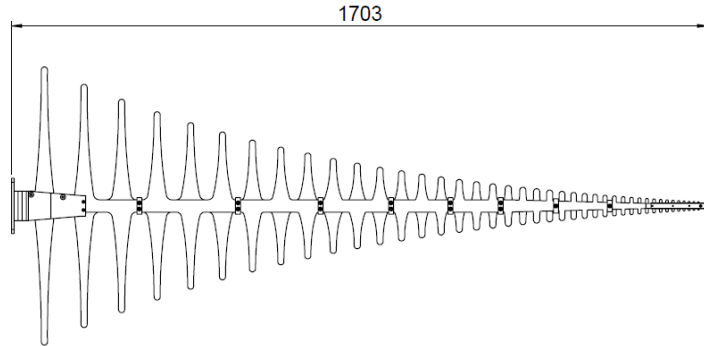
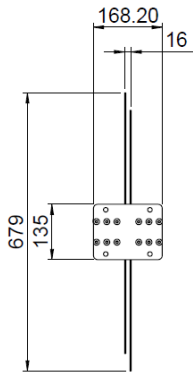
Wideband Directional Antenna

250 – 3000 MHz

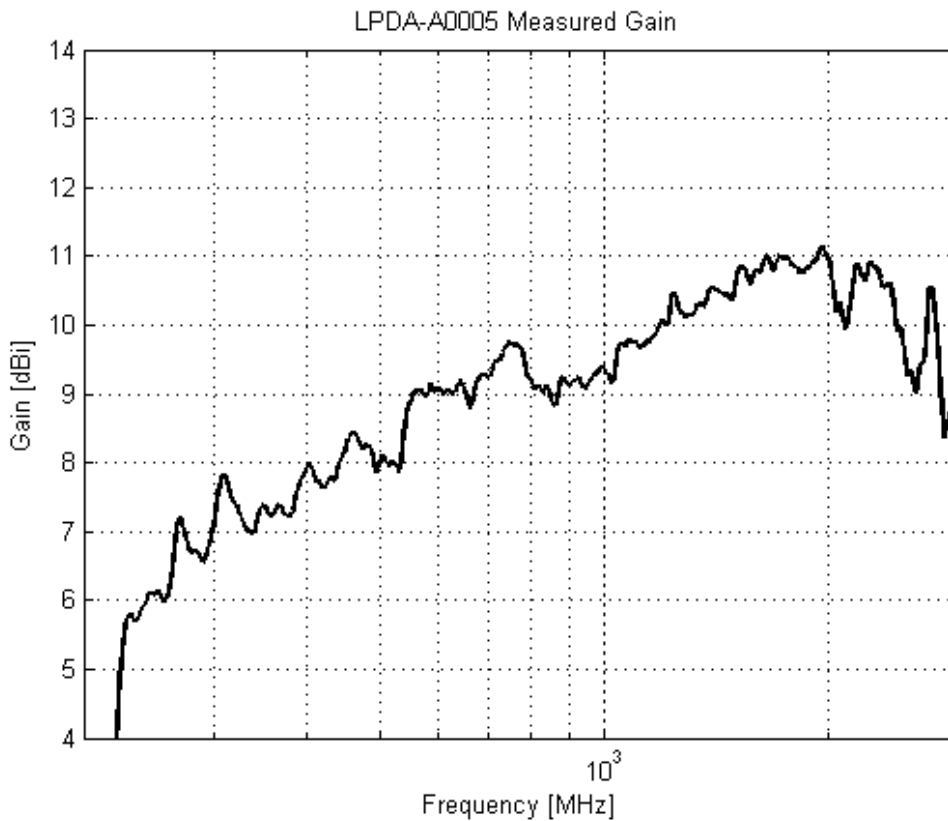
Product Code: LPDA-A0005

VERSION: 2.6

DIMENSIONS:



Measured gain:



**AUTHORIZED USA
DISTRIBUTION BY:**

Cyntony Corporation
195 Follen Road
Lexington, Massachusetts
sales@cyntony.com
781-430-0675



**GAIN THE
ADVANTAGE**