

# Man-Portable HF Directional Antenna

1.5 – 30 MHz

VERSION: 3.5

Product Code: TW-A0002



## SPECIFICATIONS:

<b>Electrical: DF</b>	
Frequency range	1.5 – 30 MHz
Polarisation	Vertical
Nominal input impedance	50 Ω
VSWR	< 2.5:1
Gain	See graph
Power handling	1 kW average, 4 kW PEP
<b>Mechanical:</b>	
Dimensions (deployed)	100 m x 2 m x 10 m high
Groundplane diameter	40000 mm
Dimensions (packed)	Crate 1: 1450 x 400 x 300 mm 52 kg (32 kg)
	Crate 2: 2240 x 402 x 220 mm 33 kg (3 kg)
Mass (antenna)	< 15 kg (excludes packaging, and mast)
Total mass (packed)	< 90 kg
<b>Environmental: designed to meet the following specifications</b>	
Wind survival	160 km/h (without ice)
Temperature range	-30 °C - +70 °C
Water resistance	IP 65
Vibration and shock	MIL-STD-810F

## PRODUCT DESCRIPTION:

The TW-A0002 is a man-portable tactical HF directional antenna system designed for rapid deployment in the field. It is ideal for high-power and long-range HF communications.

The antenna system consists of a multi-wire travelling-wave antenna that gives good directivity throughout the frequency range.

The TW-A0002 can be connected directly to 50 ohm transmitters without the need for an antenna matching unit. The VSWR is below 2.5:1 over the entire frequency range from 1.5 to 30 MHz and the antenna is rated for a transmitter power of 1 kW continuous (4 kW PEP). The TW-A0002 can be deployed by two persons in less than 60 minutes including the mast.

## PRODUCT FEATURES:

- Man-portable HF antenna
- Significant directive gain
- Low VSWR across a wideband

## APPLICATION AREAS:

- Portable communication
- Long range HF transmission
- Any HF application

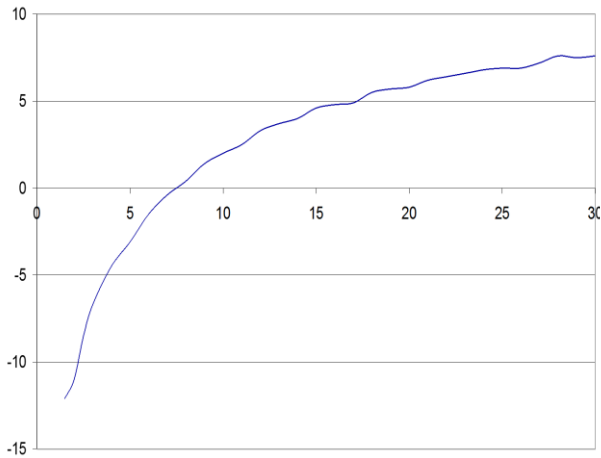
# Man-Portable HF Directional Antenna

1.5 – 30 MHz

Product Code: TW-A0002

VERSION: 3.5

### GAIN:

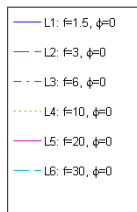
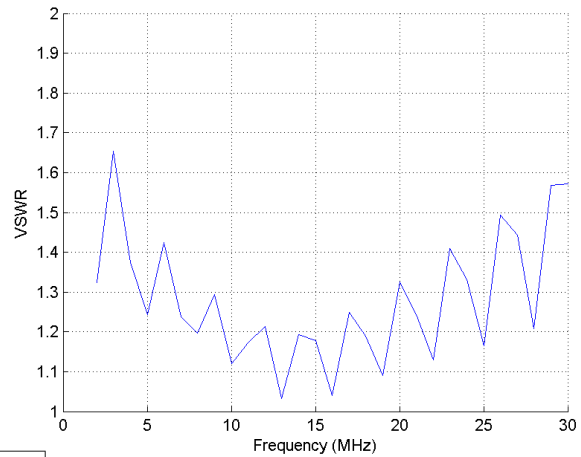


**Note:** The gain graph above shows simulated antenna gain over "average" ground with conductivity of 0.005 S/m and relative permittivity 13 and takes into account ground losses as well as resistive losses in the antenna.

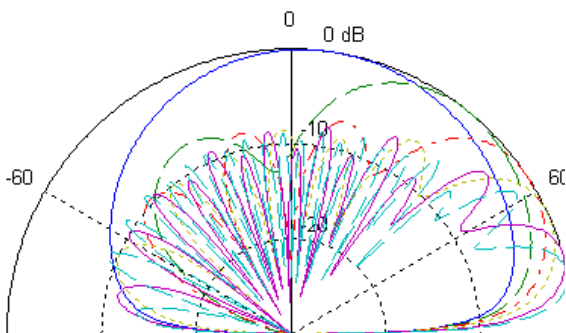
**Tolerance:** The tolerance of this graph is as follows:

- > 5 MHz: ± 6 dB of graph
- < 5 MHz: ± 9 dB of graph

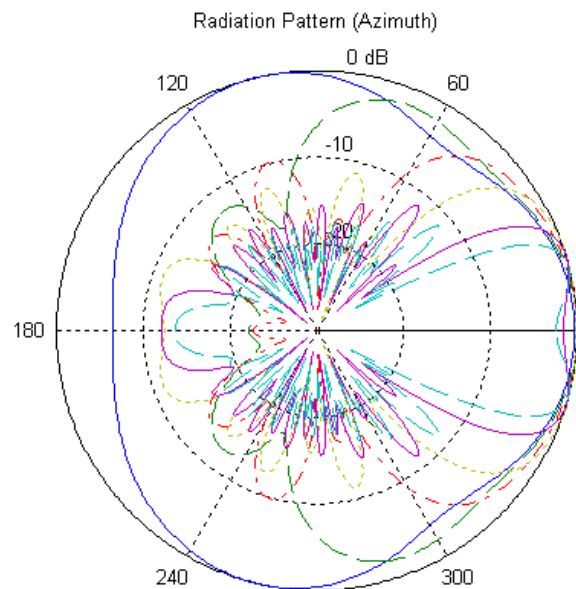
### VSWR:



### ELEVATION PATTERNS:



### AZIMUTH PATTERNS:



**AUTHORIZED USA DISTRIBUTION BY:**

Cyntony Corporation  
195 Follen Road  
Lexington, Massachusetts  
sales@cyntony.com  
781-430-0675



**GAIN THE ADVANTAGE**

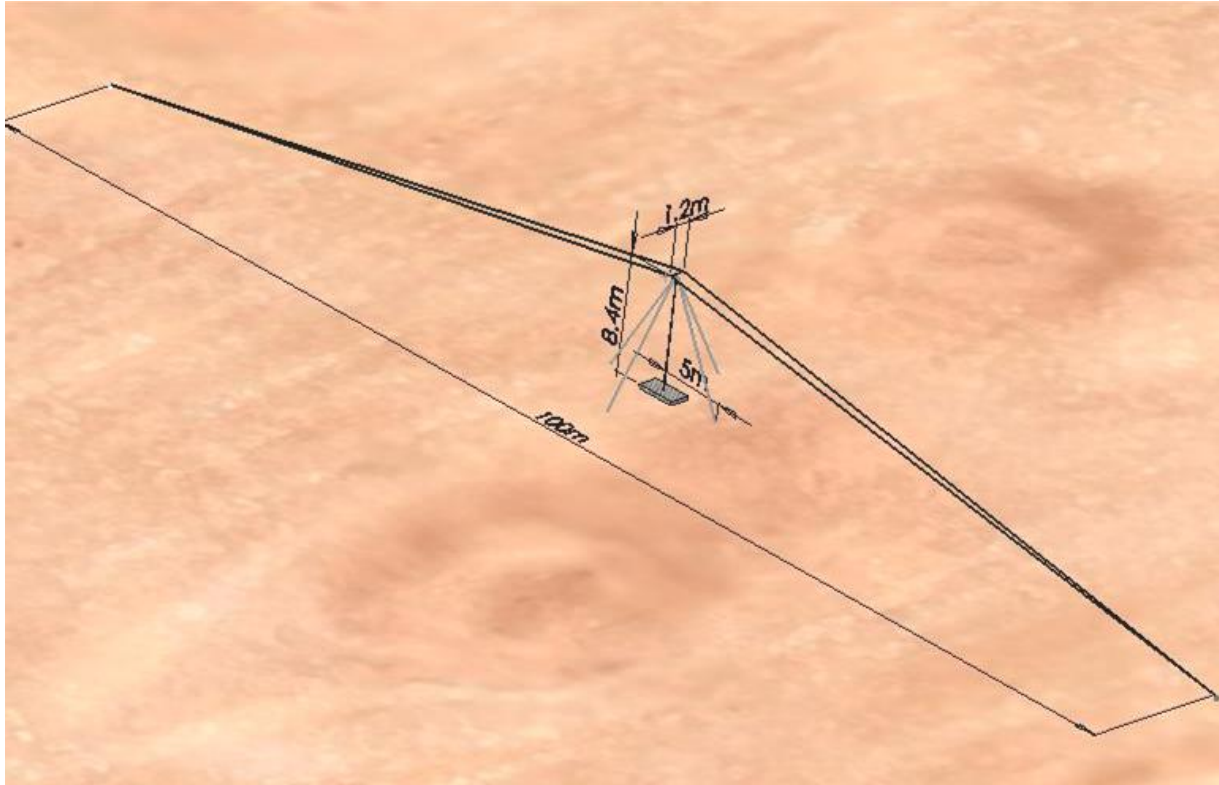
# Man-Portable HF Directional Antenna

1.5 – 30 MHz

Product Code: TW-A0002

VERSION: 3.5

## PRODUCT LAYOUT:



The dimensions of the antenna can be seen above.



**AUTHORIZED USA  
DISTRIBUTION BY:**

Cyntony Corporation  
195 Follen Road  
Lexington, Massachusetts  
sales@cyntony.com  
781-430-0675



**GAIN THE  
ADVANTAGE**