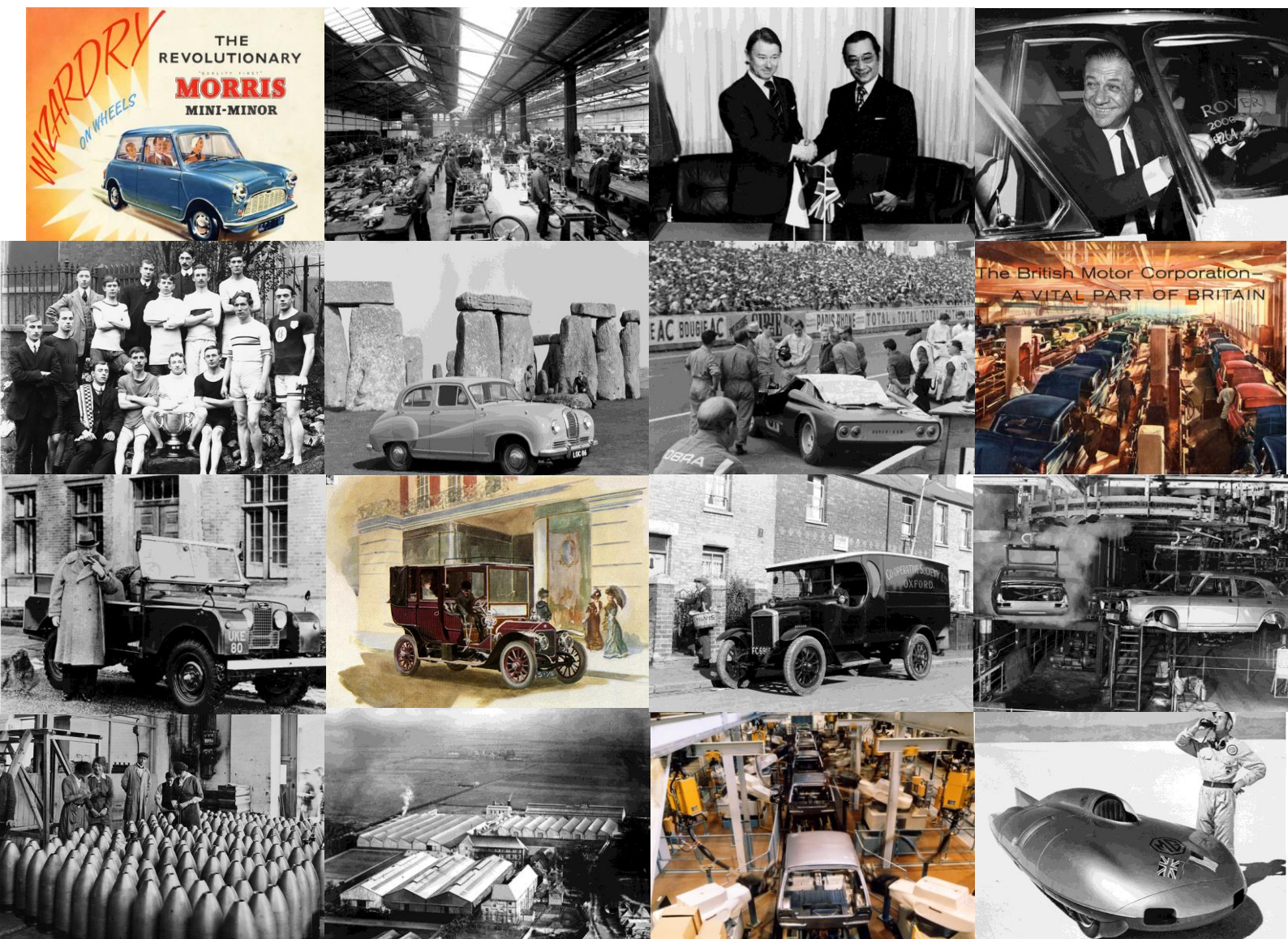


Historic Vehicle Collection at the British Motor Museum



British Motor Industry Heritage Trust
British Motor Museum, Banbury Road, Gaydon, Warwick CV35 0BJ

Historic vehicles at the British Motor Industry Heritage Trust, British Motor Museum, Gaydon

The following list shows vehicles on display and in the reserve collection at the British Motor Museum. Please note that not all of the Trust's collection is on display at any one time. Visitors are advised to check before making a special journey to see a particular car.

Part I, vehicles in BMIHT's permanent collection, held in trust	page 3
Part II, vehicles on longer term loan to BMIHT	page 17
Part III, non-vehicle collections (overview)	page 23

British Motor Industry Heritage Trust
British Motor Museum
Banbury Road
GAYDON
Warwickshire CV35 0BJ

☎ +44 1926 641188

✉ enquiries@britishmotormuseum.co.uk

www.britishmotormuseum.co.uk

Enquiries about vehicles in the collection should be made to the Curator

© British Motor Industry Heritage Trust, 2016

PART I

Vehicles in the BMIHT Collection

AEC

1934 AEC Q coach only surviving Q coach, ex-Silver Service, Darley Dale, Derbyshire

Albion

1901 Albion A1 dogcart

1909 Albion A6 tourer

Alvis

1928 Alvis FWD supercharged Leon Cushman's 1928 Ards Tourist Trophy car, in which he came second

1965 Alvis TE21

Armstrong Siddeley

1955 Armstrong Siddeley 346 Sapphire

Aston Martin

2001 Aston Martin V12 Vanquish Geneva Show car

Austin

1907 Austin 30hp oldest surviving Austin known, originally a Birmingham Parks bus, used as an ambulance in WW1

1907 Austin 40hp York landaulette

1908 Austin 100hp Grand Prix racer Moore-Brabazon's 1908 French Grand Prix car, finished 18th

1910 Austin 7hp

1911 Austin Town Carriage

1914 Austin 20hp Vitesse

1922 Austin Twenty tourer driven to Cape Town and back (37,000 miles) by a Mr AE Filby in 1934

1923 Austin Seven Chummy

1931 Austin Seven Swallow saloon

1932 Austin 12/6 Harley

1933 Austin Seven tourer

Austin (continued)

- 1934 Austin Seven side valve racer Murray Jamieson designed 'works' car , driven by Hadley
- 1936 Austin Seven twin cam racer 'works' car , driven by Hadley, Goodacre and Dodson
- 1937 Austin 18 Chalfont
- 1938 Austin Seven Ruby
- 1946 Austin Sixteen BS1 millionth Austin car produced, signed by Austin workers, made on 25th June 1946
- 1948 Austin A40 Devon, sectioned chassis 1948 Motor Show exhibit, October at Earl's Court
- 1951 Austin A90 Atlantic
- 1952 Austin Champ
- 1955 Austin A90 Westminster Richard Pape's car for Cape Cold to Cape Hot expedition (Norway to South Africa)
- 1955 Austin A30 Seven
- 1958 Austin Nash Metropolitan
- 1960 Austin A40 Farina
- 1963 Austin A60 Cambridge
- 1965 Austin 1100 estate, sectioned
- 1967 Austin 1100 automatic fitted with a 1300 engine as a test car for the new model
- 1968 Austin 1800 rally car London-Sydney Marathon car, driven by Hopkirk, Nash and Poole
- 1969 Austin Zanda styling model by Harris Mann to demonstrate BL's new CAD design tools; GRP buck
- 1969 Austin Ant Issigonis designed four wheel drive, transverse engine car, based on Mini components
- 1970 Austin Maxi rally car World Cup Rally car, London to Mexico City, driven by HRH Prince Michael of Kent
- 1973 Austin Allegro, sectioned
- 1974 Austin 1300, SRV5 safety research vehicle
- 1974 Austin 1800, SRV3 safety research vehicle
- 1976 Austin ADO88 SEP2 pre-Metro prototype small car
- 1978 Austin LC10 prototype pre-Maestro prototype small/medium car
- 1978 Austin Princess Ogle Triplex experimental car to show off new techniques in automotive glass
- 1980 Austin Metro 1.3HLS
- 1981 Austin Maxi 1750L last vehicle off the line
- 1982 Austin Allegro 1.5HL last vehicle off the line
- 1983 Austin Maestro first production vehicle off the line
- 1984 Austin Metro Notchback prototype Metro with a boot
- 1995 Montego saloon last vehicle off the line, signed by line workers, technically last Austin

Austin-Healey

1966 Austin Healey 3000 mark III

Bedford (Lucas)

1980 Bedford Lucas Electric Dormobile Prince Philip's electric powered personal transport for use in London

Benz

1888 Benz motor carriage (replica)

BMW

1928 BMW Dixi Austin Seven built under licence

Green's

1898 Greens lawn mower (with De Dion engine)

Hillman

1969 Hillman Super Imp

Honda

1979 Honda Prelude presented to Michael Edwardes by Honda on Honda-Rover collaboration signing

Jaguar

See Part II: Vehicles on longer term loan to BMIHT.

Land Rover and Range Rover

- 1948 Land Rover 80", number one first Land Rover produced
- 1948 Land Rover 80", station wagon rare Tickford designed estate, one of only 651. Fewer than 20 survivors
- 1953 Land Rover 86" royal ceremonial the original 'State I' – HM the Queen's review vehicle – now State IV
- 1955 Road Rover prototype for a more 'comfortable' Land Rover product (akin to Range Rover but 10 years earlier)
- 1958 Road Rover series II attempt, along the lines of the American station wagon. This is the last of nine prototypes
- 1958 Land Rover Cuthbertson's conversion fitted with large tracks by the Scottish company
- 1958 Land Rover 88", royal review vehicle HM Queen's review vehicle 'State II'
- 1962 Land Rover series II 129" pick-up one of two surviving from five prototypes for a larger vehicle
- 1963 Land Rover 112" recovery wagon experimental 112" forward control, Land Rover's own breakdown truck
- 1966 Land Rover series IIa 109" station wagon HM Queen's personal car and an early 6-cylinder model
- 1967 Land Rover Shorland armoured car armoured car for Northern Ireland
- 1968 Land Rover 'Pink Panther' SAS desert specification vehicle, painted in pink camouflage
- 1969 Range Rover first vehicle off the line
- 1971 Range Rover, 'Darren Gap' MoD expedition from Alaska to Cape Horn via difficult Darien Isthmus crossing
- 1974 Range Rover royal ceremonial HM Queen's review vehicle which replaced 1954 Land Rover State I
- 1975 Land Rover 101, forward control with Rubery trailer
- 1976 Land Rover series III 88" station wagon the one millionth Land Rover produced
- 1982 Land Rover series III 88", aluminium unpainted body, aluminium polished
- 1983 Land Rover One-Ten station wagon HM Queen's personal car, an early 110 and a V8 model
- 1983 Land Rover 1/2 ton lightweight and air portable version for the army; FFR
- 1983 Land Rover One-Ten station wagon, sectioned updated in 1990 with new body and a V8 engine
- 1984 Land Rover Discovery, Jay 5 prototype oldest prototype, used for Hot Environmental Validation
- 1986 Land Rover series III station wagon last SIII vehicle off line
- 1986 Land Rover Llama box van prototype forward control L/R for Army, never put into full production
- 1987 Land Rover 90 'crocodile' exhibition vehicle with body hinged off chassis
- 1987 Land Rover Llama, box van prototype forward control L/R for Army, never put into full production
- 1988 Land Rover 100", submersible with floats, capable of crossing water
- 1988 Land Rover 90, 40th Anniversary model
- 1989 Land Rover Discovery Tdi first production first series vehicle off the line
- 1989 Land Rover Discovery prototype
- 1991 Land Rover, Discovery 'Camel Trophy' special equipment for gruelling Camel Trophy rally
- 1994 Range Rover 4.0SE first of the second generation (P38a) Range Rover off the production line
- 1994 Land Rover CB40 mule prototype with Maestro van body
- 1994 Land Rover CB40 prototype Freelander design prototype

Land Rover and Range Rover (continued)

- 1994 Land Rover 90 NAS soft top V8 for the North American market
- 1995 Land Rover 'Judge Dredd' City Cab silver utility car from the film
- 1995 Land Rover 'Judge Dredd' City Cab yellow and black, only full interior car
- 1995 Range Rover Classic Tdi HRH the Prince of Wales' personal transport
- 1995 Range Rover LSE the late HM Queen Mother' personal transport. With added running boards
- 1996 Range Rover 'Classic' last of the original Range Rovers, a specially built no. 26 of 25 special edition vehicles
- 1997 Land Freelander 5-door 1.8 Xi first Freelander off the line, signed by all the line workers
- 1997 Land Rover LCV2/3 all-aluminium Defender concept
- 1997 Land Rover Discovery Paris Dakar Rally highly modified motorcycle support racer. 31st in Rally
- 1997 Range Rover police car Strathclyde Police armoured tactical response vehicle
- 1997 Land Rover Discovery II Td5 'Tempest Trek' 30,000km expedition to launch the new Discovery
- 1998 Land Rover Freelander 5-door Td4 Fifty-50 Challenge journeyed 50 countries in 50 days
- 1999 Land Rover Defender SVX design concept for an 'extreme' Defender
- 2001 Range Rover Vogue first of the third generation (L322) Range Rover off the production line. German spec.
- 2001 Land Rover Defender 110HCPU Tomb Raider Lara Croft's action vehicle from the film
- 2002 Land Rover Discovery series II G4 Challenge organisers' car used on Australian Stage
- 2004 Land Rover Discovery 3 first production third series vehicle off the line, LR3 American spec.
- 2004 Range Stormer spectacular design concept that paved the way for the Range Rover Sport
- 2005 Land Rover Discovery series II Td5 Premium last production second series vehicle off the line
- 2005 Range Rover Sport TDV6 SE first Range Rover Sport off the production line
- 2006 Land Freelander 3-door hardback last original series Freelander off the line and last from Solihull
- 2006 Land Freelander 2 Td4 HSE first second-series Freelander off the line and first from Halewood
- 2007 Land Rover 'Shaun the Sheep' a full-size version of the car from everyone's favourite ovine animation
- 2008 Land Rover Freelander 2 'ERAD' hybrid prototype diesel/electric hybrid with electric rear axle drive
- 2011 Range Rover Evoque Pure SD4 coupé first off the line of Range Rover's fashionable coupé
- 2012 Range Rover TDV8 Westminster last of line of the third generation Range Rovers
- 2012 Range Rover SDV8 Vogue SE first of line of the fourth generation Range Rovers
- 2012 Land Rover Discovery 4 V8 HSE, the one millionth Discovery
- 2012 Land Rover Defender 110 HCPU 'Skyfall' hero car from the first sequence of the James Bond movie
- 2013 Range Rover Sport TDV6 first of line of the second generation Range Rover Sport
- 2014 Land Freelander 2 SD4 Metropolis last second-series Freelander off the line
- 2014 Land Rover Discovery Sport SD4 HSE Lux first off the line of the new smaller Discovery model

Leyland

1924 Leyland Trojan tourer

1927 Leyland Straight Eight Parry-Thomas' eight cylinder racing car

1972 Leyland Crompton Electricar unusually styled prototype electric powered small city car

Lotus

1971 Lotus Europa S2 Colin Chapman's 'Lotus for Europe' designed by Ron Hickman

1997 Lotus Elise series I early aluminium brake model

MG

1925 MG 'Old Number One' Cecil Kimber's special, not the first MG as such

1931 MG 18/80 Speed model one of the last 18/80 mark I produced (of 500)

1934 MG PA Midget, sectioned

1936 MG NB Magnette

1938 MG EX135 record car Goldie Gardner's record car, reached 200 mph+ on the Dessau Autobahn, Germany

1953 MG YB saloon Len Shaw's 'semi-works' rally car

1954 MG EX179 record car Eyston's record car, achieved 170 mph in 1954 at Utah Salt Flats

1954 MG TF

1957 MG EX181 record car Stirling Moss/Phil Hill record car, reached 254.9 mph at Utah Salt Flats

1958 MG ZB Magnette

1958 MGA twin cam, sectioned Earls Court Motor Show car and possibly New York Show car

1965 MG MGB, sectioned in two halves 1965 Earls Court Motor Show car and 1967 Turin Motor Show car

1969 MG MGB roadster

1972 MGB GT, SSV1 safety systems vehicle research car

1979 MG Midget 1500 last vehicle off line

1980 MG MGB roadster last vehicle off line

1980 MG MGB GT last vehicle off line

1983 MG Metro 6R4 prototype test car for development of the 6R4 rally car

1983 MG Metro 'Alum' prototype with aluminium body

1985 MG Metro 6R4 Clubman version of Austin Rover's successful Group B rally car

1985 MG EX-E stunning concept car for a large sports car to take the V6V 6R4 engine; styling buck

1986 MG Metro 6-cylinder engineering prototype with experimental Issigonis 6-cylinder engine

1989 MG DR2/PR5 one of the rejected concepts from the design stages of the MGF, designed by Roy Axe

MG (continued)

1994 MGF prototype 'camouflaged' in a Metro van body, used to test running gear

1998 MG EX255 record car car that aimed (and failed) to beat EX181's record. Driven by Andy Green

Mini

1959 Morris Mini-Minor Number One (621 AOK) first production Mini-Minor off the Cowley line

1959 Austin Mini 'Downton' Daniel Richmond's racing conversion

1962 Mini 'Twini' Moke an engine at each end and two gearboxes

1962 Austin Mini van 'John Cooper Garages' replica of the famous Cooper works van

1963 Morris Mini-Cooper S Monte Carlo (33 EJB) Paddy Hopkirk's 1964 Monte Carlo rally winner

1964 Morris Mini-Cooper S Monte Carlo (AJB 44B) Timo Makinen's 1965 Monte Carlo rally winner

1964 Mini, ADO 34 prototype small sports car, designed to replace the MG Midget but never produced

1965 Austin Mini, LHD sectioned

1966 Morris Mini-Cooper S Monte Carlo (LBL 6D) Rauno Aaltonen's 1967 Monte Carlo rally winner

1968 Morris Mini-Minor glass fibre body prototype experimental plastic bodied car

1969 Mini 9X prototype (blue) Issigonis hatchback design to replace the Mini

1970 Mini, ADO 70 small open car built on a Mini Clubman chassis, bodied by Michelotti but never produced

1971 Mini Cooper S mark 3 one of the last Cooper S models

1974 Mini Clubman, SRV4 safety research vehicle

1976 Mini 9X gearless prototype (green) Issigonis Mini prototype with experimental gearless transmission

1984 Mini Moke Portuguese built Moke

1990 Mini ERA turbo

1992 Mini Cord Venezuelan built car with plastic body

1995 Mini 'Minki 2' prototype Mini with increased track and K series engine

2000 Mini Cooper the very last of the original Mini design. Driven off the Longbridge line by Lulu. 5,387,862 produced.

2001 MINI Cooper early BMW manufactured MINI

Morgan

1935 Morgan Supersports three-wheeler Matchless engine

1939 Morgan 4-4 flat-rad, Coventry Climax powered car

Morris

- 1913 Morris Oxford an early White & Poppe engined 'Bullnose'
- 1921 Morris F-type 'Silent Six' Lord Nuffield's personal transport, only survivor of approximately fifty produced
- 1924 Morris T type 1-ton truck the first Morris truck produced
- 1925 Morris Oxford 'Red Flash' Wellsteed's Brooklands racing special
- 1929 Morris Minor tourer
- 1931 Morris Cowley taxi
- 1936 Morris Eight saloon
- 1948 Morris Minor MM, number one the first production vehicle off the line
- 1952 Morris Oxford MO
- 1953 Morris Minor fire engine one-off built for the Morris factory at Cowley, Oxford
- 1960 Morris Minor convertible
- 1968 Morris Minor GPO telephone engineer's van
- 1969 Morris Minor Traveller
- 1971 Morris 1800 S
- 1973 Morris 1300, plastic bodied experimental car with glass fibre body
- 1974 Morris Marina, SRV2 safety research vehicle
- 1984 Morris Ital estate the last vehicle off the line and the last Morris car produced

Nuffield Mechanizations

- 1947 Nuffield 'Gutty' military quarter ton prototype and the distant forerunner of the Austin Champ

Reliant

- 1970 Reliant Regal Supervan III the infamous three-wheeler van; in Post Office livery
- 1971 Reliant Scimitar SE5a glass fibre bodied, sports touring estate

Riley

1899 Royal Riley tricycle the oldest surviving Riley car known

1907 Riley Popular forecar

1907 Riley 9hp V-twin

1909 Riley 10hp V-twin

1933 Riley Nine Kestrel

1952 Riley RMA 1½ litre

1962 Riley Elf

Rolls Royce

2003 Rolls Royce Phantom BMW design built at Goodwood

Rover

1904 Rover 8hp the oldest surviving Rover car known

1906 Rover 6hp

1907 Rover 20hp tourer

1911 Rover Imperial motorcycle

1912 Rover 12hp landaulette once owned by Lord Catto, governor of the Bank of England

1915 Rover Imperial motorcycle

1922 Rover Eight flat twin

1929 Rover Light Six 'Blue Train' same model as the Rover with which Dudley Noble raced the French 'Blue train'

1930 Rover Meteor Corsica Corsica sedanca coupé body, once owned by the Garlick family of South Africa

1936 Rover 14 Streamline

1948 Rover P3 75

1950 Rover P4 75 'Cyclops' early 15 bar grille model

1951 Marauder tourer one of 15 sports tourers built on the Rover P4 chassis, conceived by three Rover employees

1956 Rover T3 gas turbine Rover's third gas turbine prototype, rear engine, four wheel drive coupé

1956 Rover T3 gas turbine test bed engineering mule for proving Rover T3's gas turbine unit and transmission

1961 Rover T4 gas turbine Rover's fourth gas turbine, based on their forthcoming 'P6' saloon; front engine

1963/5 Rover BRM gas turbine racing car Graham Hill, Ritchie Ginther and Jackie Stewart's Le Mans car

1965 Rover 3 litre coupé

1965 Rover 2000 (P6)

1967 Rover P6BS Rover/Alvis mid-engined sports car prototype; only one full size car

Rover (continued)

1968 Rover P8 Mantelay Rover design for a new large car which was never produced

1972 Rover P5B Harold Wilson's and later Margaret Thatcher's Prime Ministerial car. Fitted with large ashtrays for HW

1975 Rover SD1 estate one off prototype for an SD1 estate car; used by Michael Edwardes as his daily transport

1980 Rover SD1, ghosted section

1981 Rover ECV 3/1 Spen King prototype for an environmentally friendly, lightweight and efficient small car

1984 Project 90, number one prototype small car

1986 Rover 825 first production vehicle off the line

1986 Rover SD1 Vitesse last vehicle off the line

1986 Rover CCV concept car concept design for a new Rover large car: styling buck

1995 Rover 214Si first R3 200 production vehicle off the line

1998 Rover 114GTa last Metro/R6 off the line; signed by all involved with Metro project

1999 Rover '75' 2.5 Connoisseur first of line of R40 model

2005 Rover '75' CDT last of line of 75 and the last ever Rover. Handbuilt during MG Rover administration

Standard

1907 Standard 30hp Roi de Belges oldest surviving Standard car known

1913 Standard 20hp Cheltenham

1929 Standard Nine Teignmouth

1934 Standard 10/12 Speedline

1955 Standard Eight

1960 Standard Ensign one of the last cars to bear the Standard name

Thornycroft

1904 Thornycroft 20hp

1907 Thornycroft 40hp TT racer 1908 Isle of Man Tourist Trophy racing car

1908 Thornycroft 30hp TT racer 1908 Isle of Man Tourist Trophy racing car

Triumph

1953 Triumph Mayflower

1959 Triumph TR3

1965 Triumph Vitesse

1969 Triumph GT6

1970 Triumph 1300

1972 Triumph Dolomite Michelotti one off prototype with experimental Michelotti design body

1974 Triumph TR6

1975 Triumph SD2 'Allied' only surviving prototype for a Dolomite replacement which never reached production

1977 Triumph Stag last vehicle off the line

1977 Triumph 2500S estate last vehicle off the line

1978 Triumph TR7 V8 rally car Tony Pond's Ypres and Manx Rally winning car

1978 Triumph Lynx prototype for a fastback coupé to replace the Stag, similarly styled to the TR7

1978 Triumph Lynx Broadside prototype GT car as a successor for the Lynx project but never came to fruition

1979 Triumph TR7 Broadside prototype convertible as a successor for the Lynx project but never came to fruition

1980 Triumph Spitfire 1500 last vehicle off the line

1980 Triumph Dolomite Sprint last vehicle off the line

1981 Triumph TR7 last vehicle off the line

1984 Triumph Acclaim last vehicle off the line and the last Triumph produced

Vanden Plas

1965 Vanden Plas 4-litre R

1973 Vanden Plas 2200 prototype one off design for a VDP version of the BL Princess range

Vauxhall

1964 Vauxhall Viva HA deluxe

Wolseley

- 1896 Wolseley Autocar No.1** the first Wolseley car designed by Herbert Austin; exhibited at Crystal Palace in 1896
- 1896 Wolseley tricar** the second of Austin's designs but not an official Wolseley
- 1899 Wolseley 3¹/₂hp voiturette** Austin designed first four wheeled Wolseley car, actually the only one produced
- 1901 Wolseley 10hp tonneau** with coachwork by Ann Cowburn of Manchester
- 1904 Wolseley 6hp phaeton** assembled at the former Maxim factory at Crayford
- 1919 Wolseley E2A Stellite**
- 1923 Wolseley E3**
- 1932 Wolseley Hornet EW special** Whittingham and Mitchell body
- 1934 Wolseley Nine**
- 1939 Wolseley Eight** Lord Nuffield's personal transport
- 1951 Wolseley 6/80 police car**
- 1957 Wolseley 1500**
- 1975 Wolseley 2200** last vehicle off the line and the last Wolseley produced

Bicycles and pedal cars

1966 Austin J40 pedal car (white)

1971 Austin J40 pedal car (blue)

1971 Austin J40 pedal car (red) one of the last batch, previously displayed in the Bargoed plant

1903 Morris bicycle bought back by William Morris; built by him for a tall vicar

1985 Sinclair C5

1876 Starley Coventry Lever tricycle Starley was the forerunner of the Rover Company

1880 Starley Salvo tricycle favoured by Queen Victoria

1886 Starley 'Rover' safety bicycle first use of Rover name and first bicycle with 'modern' frame design

1909 Rover lady's bicycle

1924 Rover gentleman's bicycle

PART II

Vehicles on longer term loan to BMIHT

AEC

1921 AEC S-type bus London Transport

Aston Martin

1952 Aston Martin DB2 property of Sir Stirling Moss

Austin

1928 Austin Seven Avon Sportsman's two seater only one produced (by New Avon of Warwick)

1952 Austin A30 convertible only factory convertible produced

Austin-Healey

1959 Austin Healey 3000 rally car first 3000 produced, rallied by BMC competition department

Ford

1922 Ford Model T tourer American built car

1933 Ford Model Y Dagenham built. This particular car has never been restored

1949 Ford Prefect

1982 Ford Cortina mark V 2 litre Ghia one of the last Cortinas

2001 Ford THINK electric

Hutchings

1935 Royal Winchester caravan

Jaguar

A changing selection of cars from the Jaguar Heritage Trust collection is always on display in the museum.

Lotus

1953 Lotus Mark VI once Colin Chapman's car

1969 Lotus Seven Twin Cam SS the first of thirteen of the most powerful of Sevens. Earl's Court Motor Show car

March

1970 March Ford 701 Jackie Stewart's Tyrrell team car. Second place at both the Dutch and Italian Grands Prix.

1978 March-Triumph F3 car Nigel Mansell's Formula 3 racing car

McLaren

2011 McLaren MP4-12C first press car and *Top Gear* test track fastest lap challenger

MG

1932 MG J2

1936 MG SA

2004 MG XPower SV

Norton

1987 Norton Interpol RAC motorcycle

Rover

1966 Rover/Alvis prototype 'Gladys' designed by David Bache on a Rover P6 chassis, body built by Radford

1971 Rover P5B one of the Queen's personal fleet of cars

1974 Rover P5B one of the Queen's personal fleet of cars

Standard

1952 Standard Vanguard mark I

Thunderbirds

2004 Thunderbirds FAB 1 Ford's interpretation of Lady Penelope's pink limousine for the Thunderbirds movie

Toyota

1992 Toyota Carina E first car off the line at Toyota's British plant at Burnaston

TVR

2001 TVR T400R GT race car successful British GT/Le Mans racer; last TVR to race at Le Mans

Vanden Plas

1969 Vanden Plas Princess royal limousine Royal limousine, used by HRH Princess Anne

Vauxhall

1937 Vauxhall H-type Ten the first British production car with monocoque construction

Wolseley

1937 Wolseley 14/56 police car

The James Hull Collection

A number of vehicles from the James Hull Collection - purchased by Jaguar Land Rover Heritage in 2014 - are regularly on display and which currently include:

- 1934 SS One Airline** rare streamline design of Art Deco period
- 1949 Triumph 2000 Roadster** example of the model made famous by the Jersey TV detective, Bergerac
- 1950 Jaguar XK120 roadster** early alloy-bodied car
- 1952 Austin A40 Sports** Jensen styled small sports tourer
- 1953 Allard P2 Safari woodie estate** one of only 10 made - this one Cadillac powered
- 1953 Ford Consul EOTA estate** much rarer Abbott bodied estate
- 1953 Sunbeam Alpine** launched in 1953 with a name which alluded to Sunbeam's success on the Alpine Rally
- 1954 Swallow Doretti** short-lived tube frame, aluminium bodied sports car, made in Walsall
- 1955 Bentley R-type Continental** Mulliner fastback body, once the fastest four-seater in the world
- 1963 Jaguar mark II 3.8 manual overdrive**
- 1964 Jensen CV8** the Chrysler powered sports tourer with love-it-or-hate-it styling
- 1965 Alvis Super Graber cabriolet** unique car made by the Swiss Carrosserie Hermann Graber
- 1965 Morris Mini-Minor Traveller mark I** once owned by Lord Mountbatten
- 1966 Jaguar E-type Coombs conversion** only surviving Coombs tuned E-type
- 1967 Humber Hawk series IVA estate** once owned by the solicitor in the Profumo Affair
- 1973 Rolls Royce Shadow series 1**

Bicycles and pedal cars

- 1930 ATCO child's trainer** training car for children with proper controls; powered by lawnmower engine
- 1949 Austin Pathfinder pedal car** miniature of the Austin Seven racing cars
- 1908 Rover racing cycle** Victor Johnson won the one kilometre race on this cycle in the 1908 Olympics in London
- 1960 Triumph TR3 pedal car** an official Triumph product

PART III

Non-vehicle collections - brief overview

Covering all major former British Leyland companies:

- Technical Literature
- Engineering drawings and papers (restricted access)
- Sales literature
- Business literature
- Production records

Photographic collections (negatives, film and video):

- Canley (Standard and Triumph)
- Cowley (Morris, MG and Riley)
- Solihull (Rover and Land Rover)
- Longbridge (Austin and Mini)
- Pressed Steel
- Wolseley

Special collections:

- Sir Miles Thomas
- Lord Nuffield (William Morris)
- Lord Austin (Herbert Austin)
- Sir Alec Issigonis
- Lucas
- Nick Baldwin Collection
- Aston Martin

Jaguar Heritage Trust:

- The archives for Jaguar, Daimler, SS and Lanchester, owned and managed by the Jaguar Heritage Trust, are also located at the British Motor Museum.

British Motor Industry Heritage Trust
British Motor Museum, Banbury Road, Gaydon, Warwick CV35 0BJ
www.britishmotormuseum.co.uk