



Northwest Utilities Day 2020

What's Your Plan for the Future?

Intelligent Asset Management for the Real Time Enterprise

Ryan Jones, SAP
Dominic Brennan, SAP

Feb 27th, 2020
PUBLIC

Proudly co-sponsored by

 UTEGRATION[®]



Who
knows
that we launched
IAM?



SAP® Intelligent Asset Management – Powering the Digital Transformation of Asset Management

Figure 1: Strong Recognition of Need for Intelligent Asset Management



76%

Of organizations consider it important to **predict potential failures** by leveraging data models



21%

Of organizations employ **predictive and preventive maintenance** effectively



83%

Of organizations consider it important to have asset management processes and related metrics standardized across facilities and regularly tracked



13%

Of organizations are able to drive asset performance based on analysis of real-time sensor data, along with historical maintenance data

Whitepaper available here:

<https://www.sap.com/documents/2016/12/0421b662-9f7c-0010-82c7-eda71af511fa.html>

SAP Intelligent Asset Management

Capabilities & solutions



Asset Network and Collaboration

SAP Asset Intelligence Network



Asset Strategy and Performance

SAP Asset Strategy and Performance Management



Asset Health Prediction and Optimization

SAP Predictive Maintenance and Service

SAP Predictive Engineering Insights Enabled by ANSYS

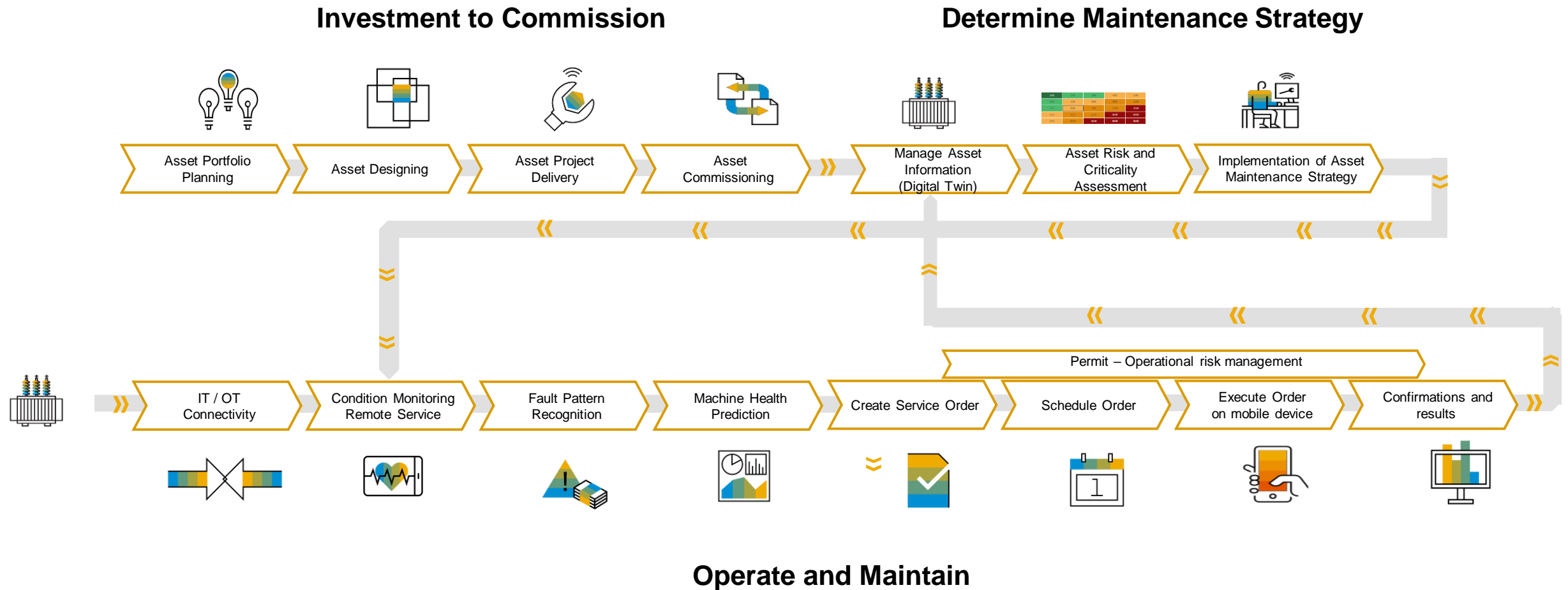


Mobile Asset Management

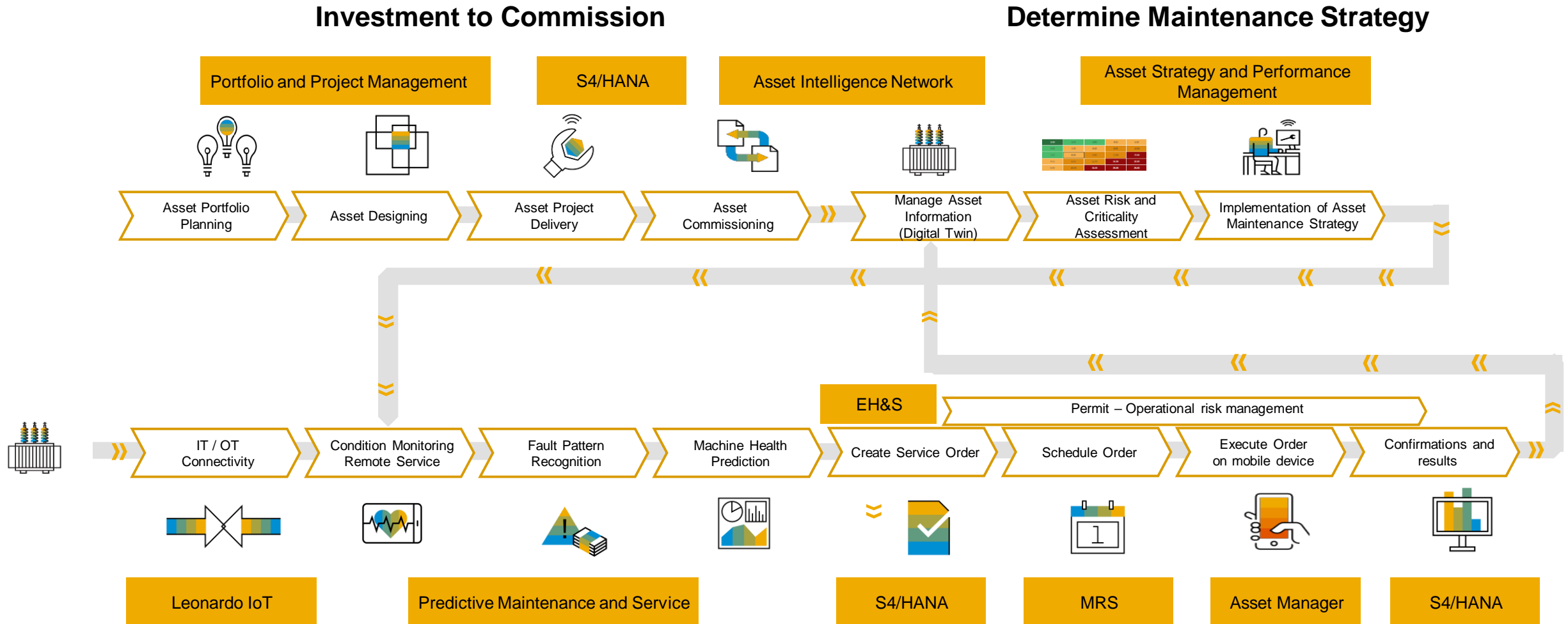
SAP Asset Manager



The Asset Life-cycle

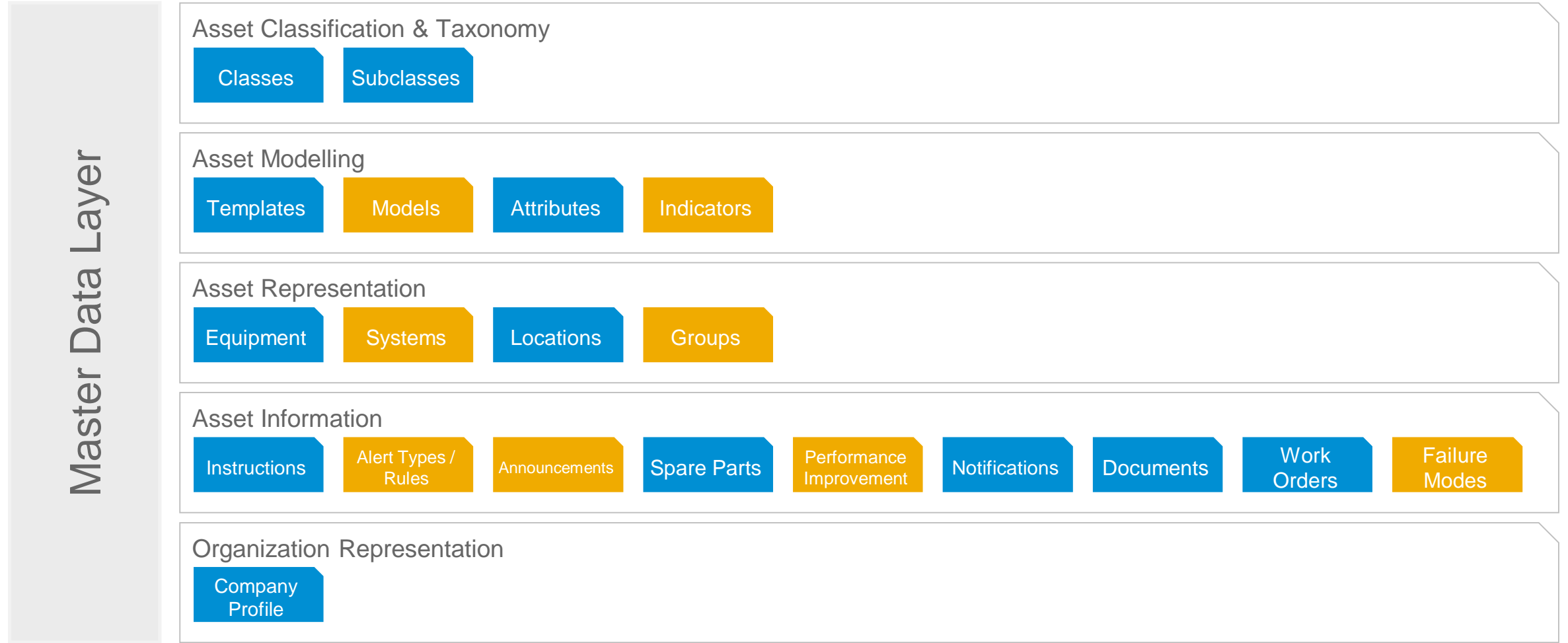


Asset Life-cycle & related SAP Solutions



SAP Asset Central Foundation

Collaborative Data Model

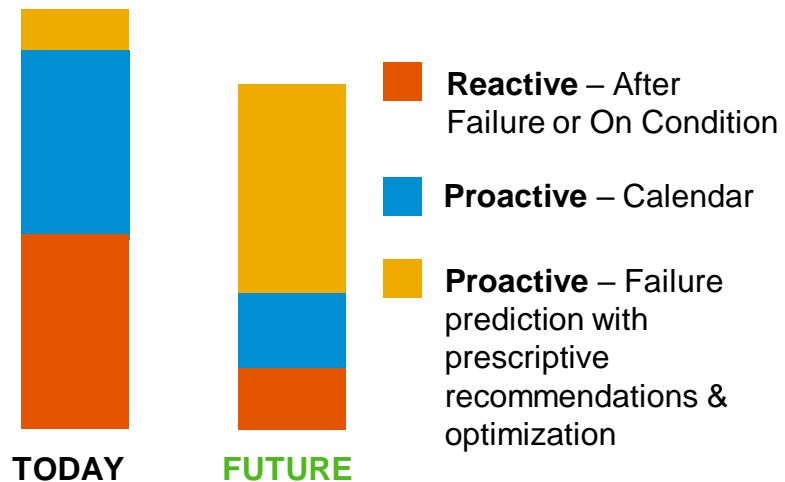


New Innovations

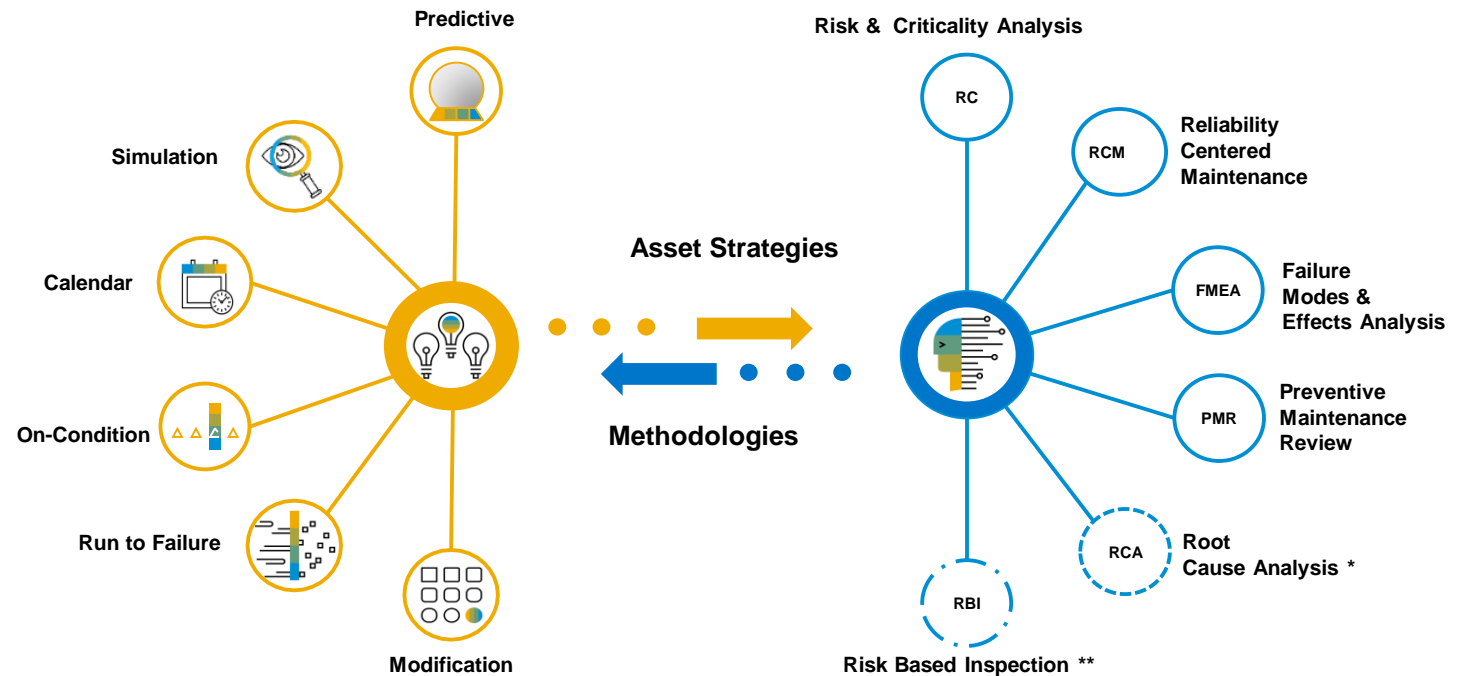
Evolve from reactive to reliability-centered & prescriptive maintenance

Calendar based maintenance results in **over-maintaining** assets at higher costs / less availability

Reactive based maintenance is too late for efficient planning and optimization



Intelligent Asset Management supports **data driven proactive** strategies with execution and optimization based on reliability & other goals. This achieves the delicate balancing of **profitability, asset health** and **availability**



*Future Functionality
** Partner Solution

Asset Strategy & Performance



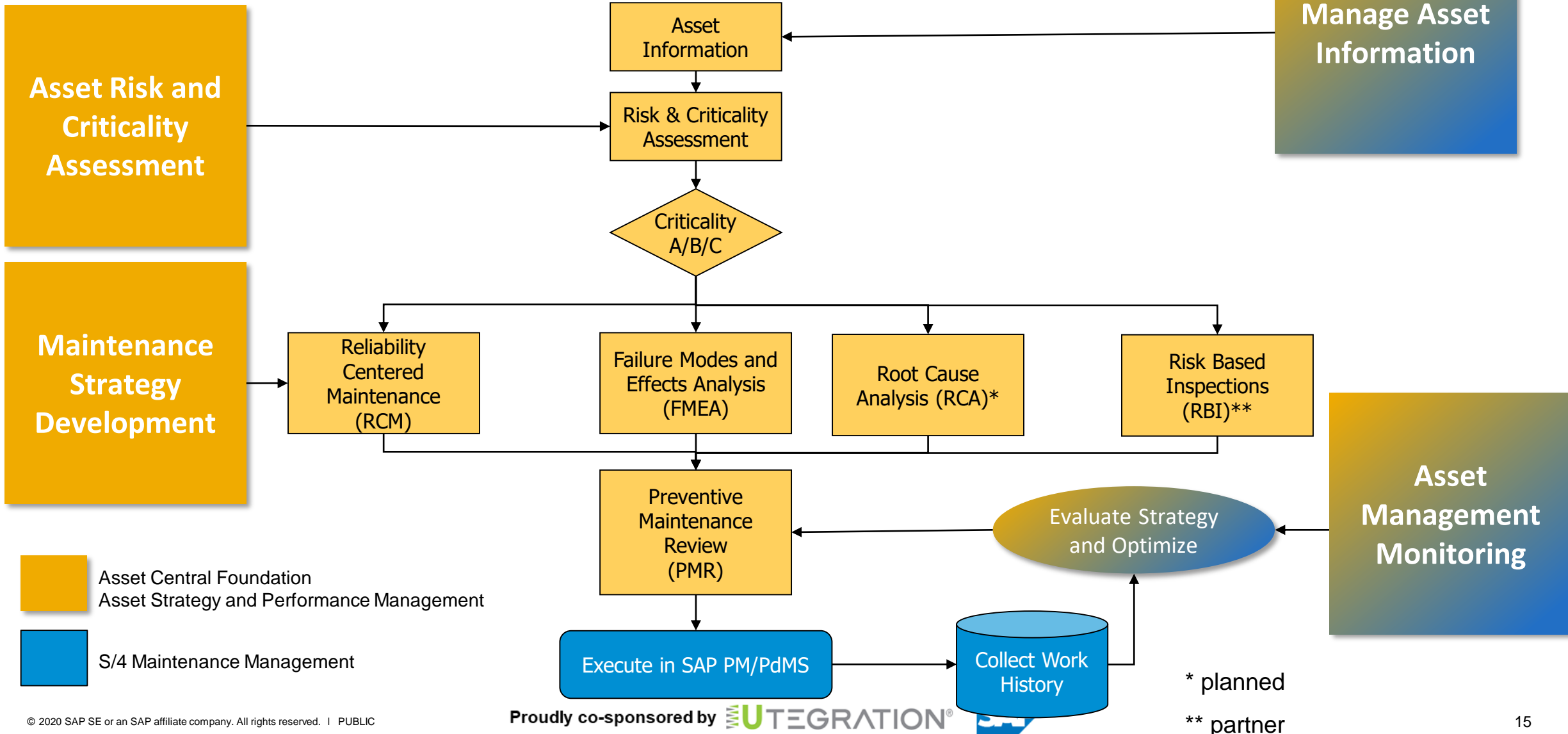
Why do some RCM initiatives fail to deliver?

The challenge lies with the difficulty of implementation:

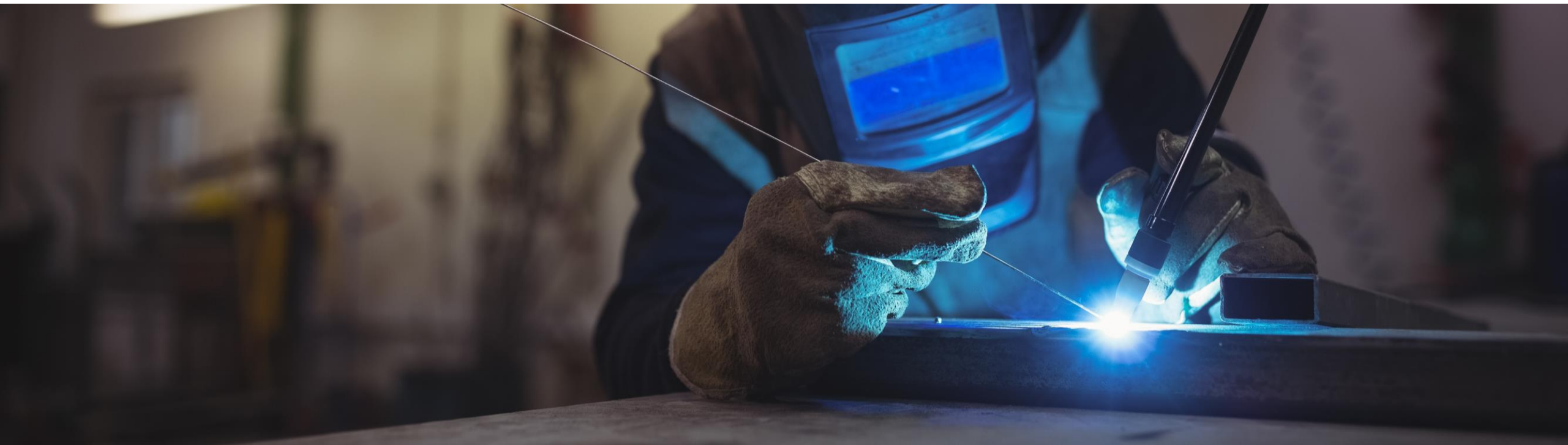
- Existing RCM tools are disconnected from SAP
- Loading RCM recommendations into EAM is difficult.
- Once loaded, RCM task justification is lost
- Measuring results over time is difficult.
- Keeping the RCM process evergreen is nearly impossible.

The Result... most RCM initiatives are one-time exercises, not “living programs”.

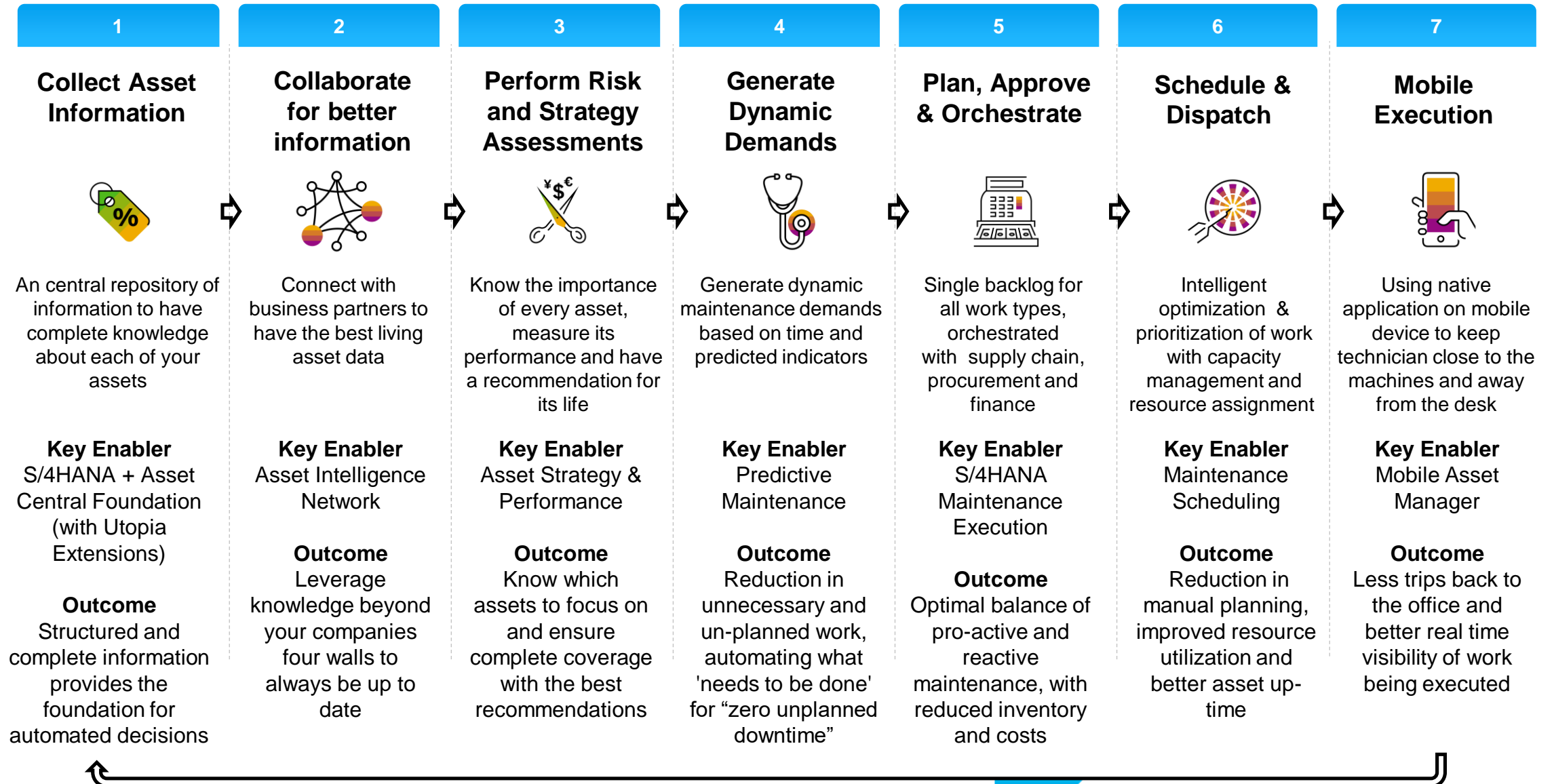
Introducing SAP Asset Strategy and Performance Management



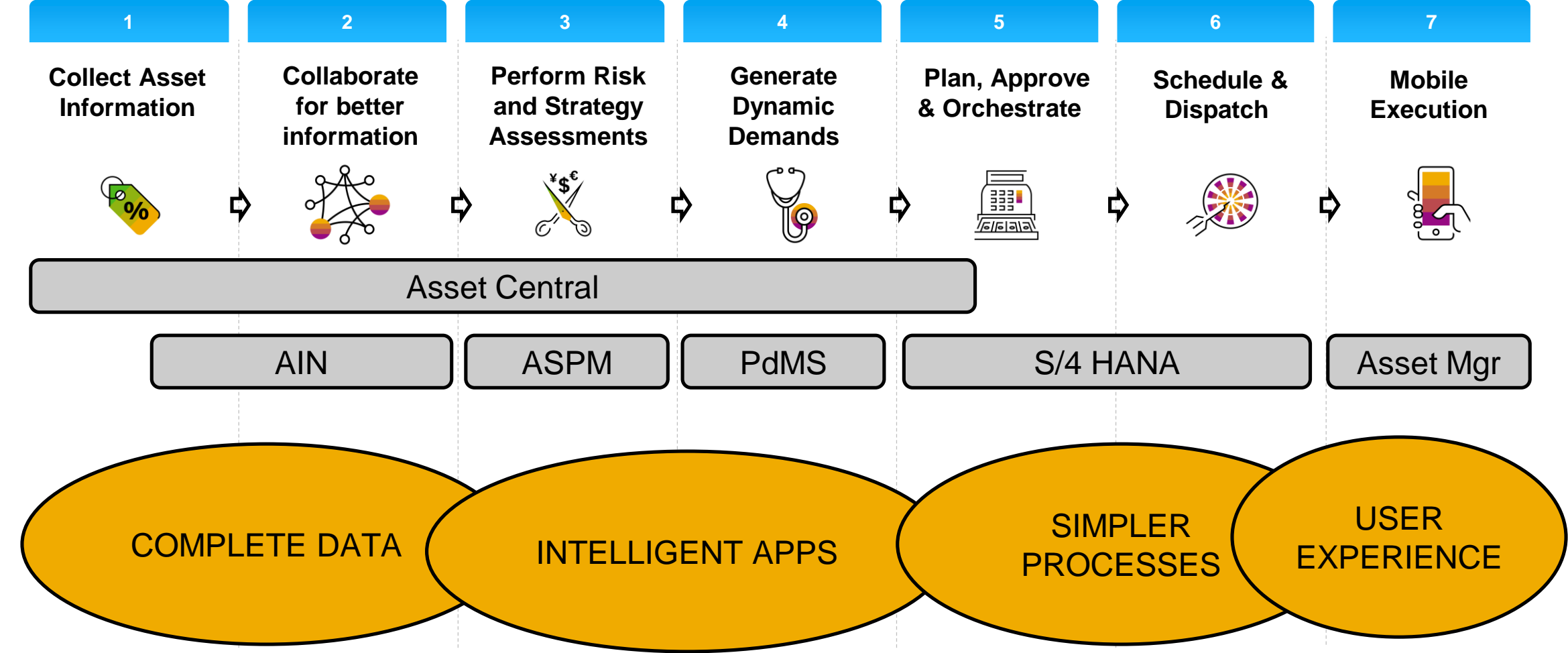
Summary



Recommended End State for Intelligent Asset Management



Recommended End State for Intelligent Asset Management



SAP Intelligent Asset Management

Capabilities & solutions



Asset Network and Collaboration

SAP Asset Intelligence Network



Asset Strategy and Performance

SAP Asset Strategy and Performance Management



Asset Health Prediction and Optimization

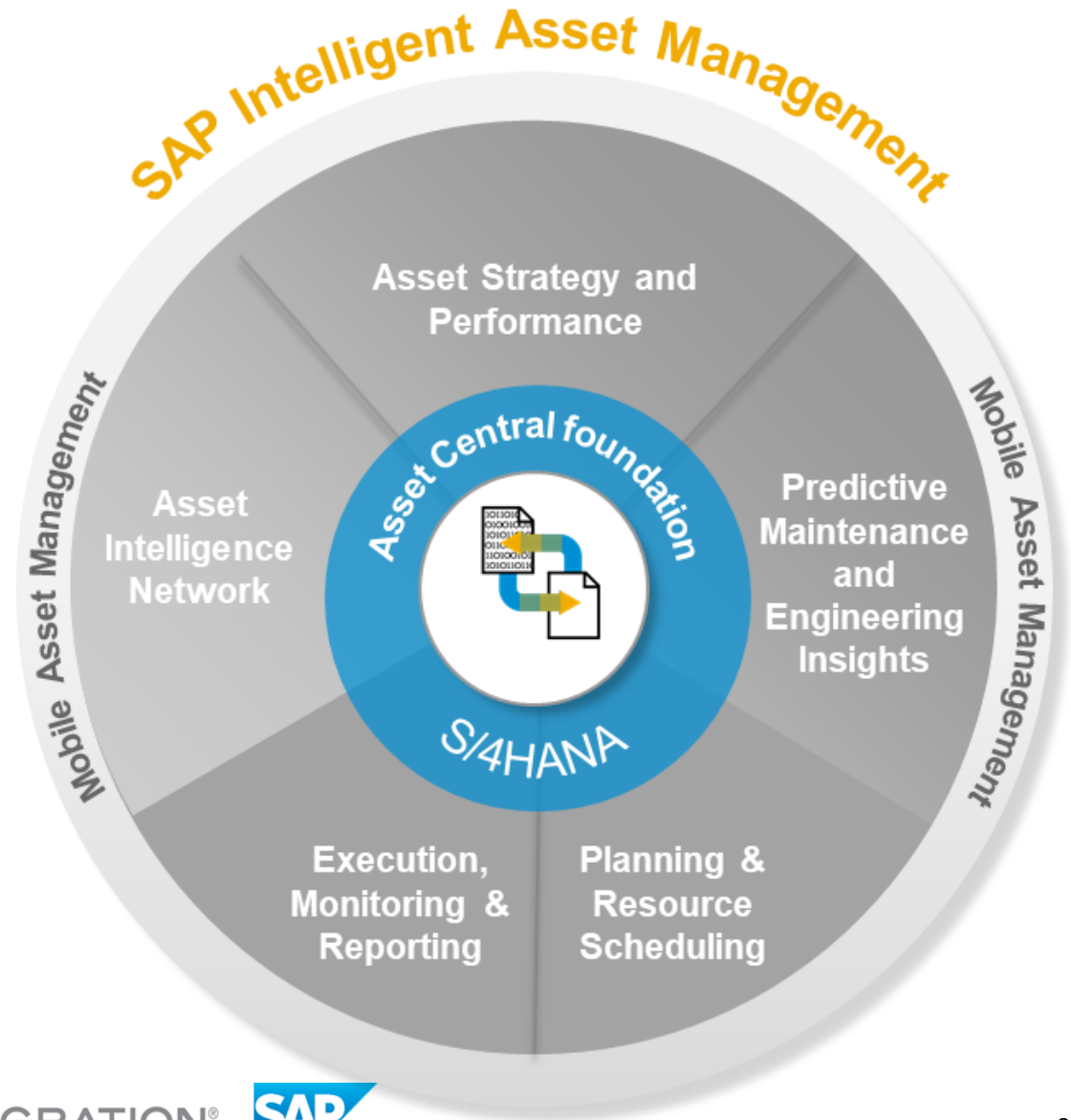
SAP Predictive Maintenance and Service

SAP Predictive Engineering Insights Enabled by ANSYS



Mobile Asset Management

SAP Asset Manager



Thank you.

Contact information:

Dominic Brennan

Director IBU – Generation & EAM

+1 415 305 5740

dominic.brennan01@sap.com

Ryan Jones

Solution Advisor - DSC

+1 604 647-8140

ryan.jones01@sap.com