

## BARNES SITHE - A cost saving solution to your clogging problems

Barnes Sithe submersible chopper pump eliminates weekly clogging issues at Southwest Licking County's lift station in Pataskala, OH.

### In a nutshell

#### SITE:

Pataskala, OH

Southwest Licking County is a rural water and wastewater district that covers about 100 sq. miles. The wastewater treatment plant is designed to handle 2.5 million gallons per day.

#### APPLICATION:

Sources for this lift station are residential, including a trailer park, and several other lift stations. The sewage is pumped to the wastewater treatment plant.

#### PROBLEM:

T-shirts, mop heads, ropes, rags and undergarments were clogging the non-clog pumps at the station consistently and Service team had to unclog the pumps every week. Constant service calls would lead to unnecessary expenditure on man-hours, equipment and fuel.

#### SOLUTION:

Crane Pumps and Systems devised a solution by providing our new Barnes 4SCMD Sithe 10 HP chopper pump. Since the installation, over 7 months ago, Barnes Sithe has been chopping and pumping the solids without any need for a service call.

Matt Pennington, Collections System Supervisor, and his team of three would have weekly milk runs to the station to unclog a pump. The usual culprits would be t-shirts, rags, mop heads, ropes and even undergarments. This station takes sewage from surrounding residences and several other lift stations and transfers it to the waste water treatment plant. Weekly clogging led to high maintenance costs and service costs.

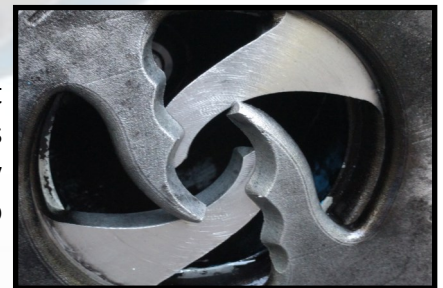
Excel Fluid Group Inc., a Crane Pumps and Systems' channel partner, teamed up with Matt to install Barnes' brand new Sithe chopper pump. The intention was to chop big solids right before pumping and therefore prevent clogging.

The pump installed was a 4SCMEA 10HP chopper pump. The installation was straightforward and no modifications were required to the station or the control panel. The slotted discharge flange allowed the pump to be installed with existing guide rail fitting. Plug-n-play cord made the installation quicker.

Equipped with hardened and heat treated cutting blades, Sithe has been chopping and pumping away the solids since June 2017 with zero downtime.



Barnes Sithe chopper pump  
at Pataskala, OH



Heat treated cutting blades

*"Sithe has definitely led to cost savings in man-hours, equipment cost and fuel cost from not having to come out and pull the pump to remove clogs"*  
- Matt Pennington, Collection Systems Supervisor

BARNES burks®



DEMING PROSSER WEINMAN®

**CRANE**

PUMPS AND SYSTEMS • 420 THIRD STREET • PIQUA, OH 45356 • 937-778-8947

Jan. 2018