

# ClearLogic<sup>®</sup>

Membrane Bioreactor



**WESTECH<sup>®</sup>**

# Membrane Bioreactor



ClearLogic® MBR near Flagstaff, AZ.

The ClearLogic® membrane bioreactor (MBR) provides peace of mind to its owners through WesTech's 40+ years of designing reliable and practical wastewater treatment solutions. Customers choose WesTech for superior service and the ability to provide complete systems that can include all instrumentation and control systems, as well as headworks and tankage. Choosing an MBR integrator with the process knowledge and years of wastewater experience is a vital part of your MBR solution.



## System Expertise

With more than 8,000 municipal installations worldwide, WesTech has the expertise to provide a complete MBR system from turnkey plants or existing plant retrofits to new plant design. WesTech provides treatment solutions that work.

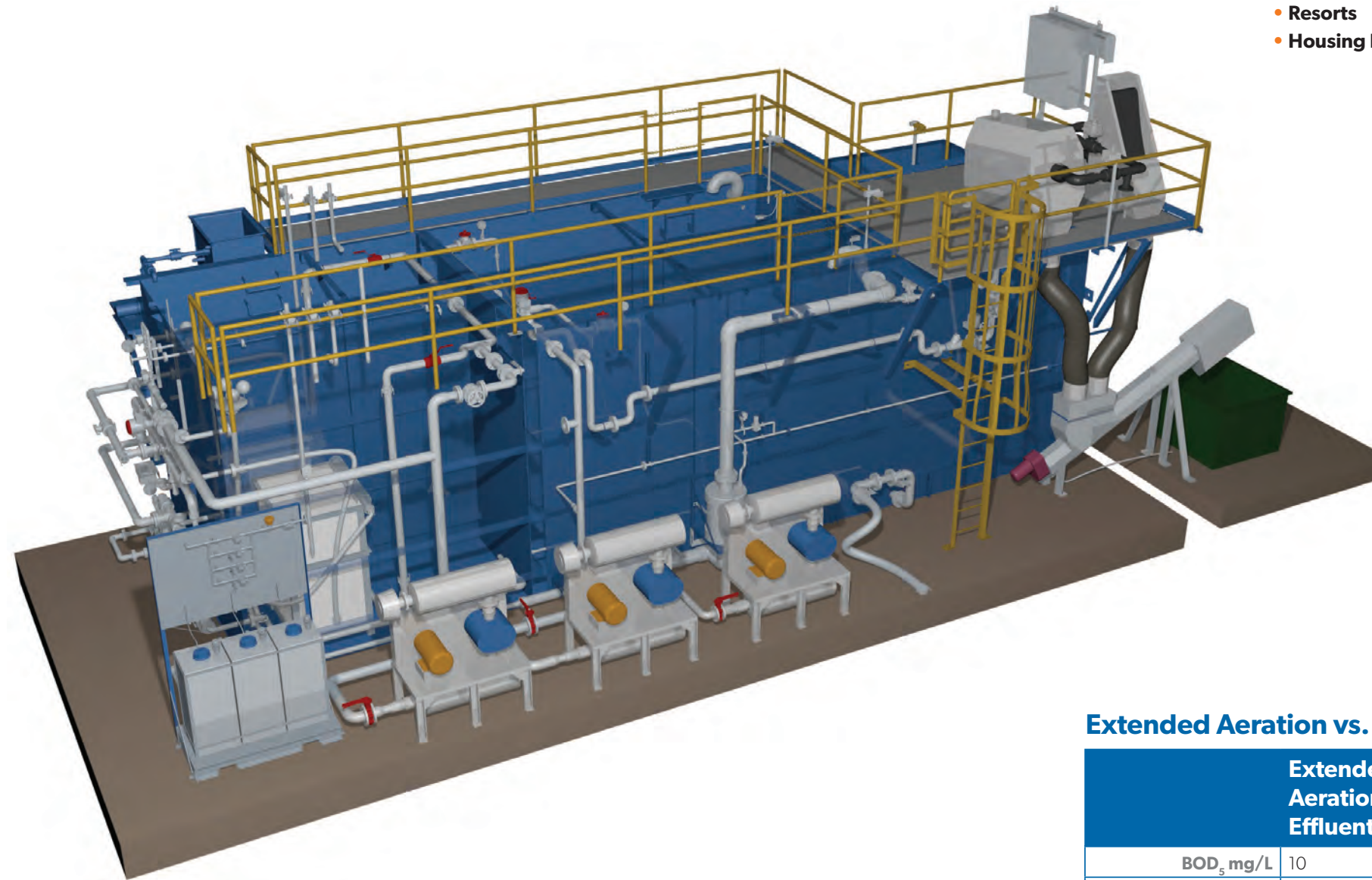
- **Municipal Plants**
- **Remote Man Camps**
- **Conventional Plant Retrofits**
- **Industrial Plants**
- **Decentralized Treatment**
- **Resorts**
- **Housing Developments**

## How It Works

The ClearLogic® MBR combines an activated sludge process with synthetic membranes to produce superior effluent. The membranes provide a positive barrier, retaining solids and allowing only clean water to pass through.

Air scour is applied on the surface of the membranes to not only prevent fouling, but also to provide agitation for mixing. WesTech also offers a variety of control options to help automate and optimize the process requirements.

WesTech can also provide headworks, aeration, and solids-handling equipment as part of a complete biological treatment solution.

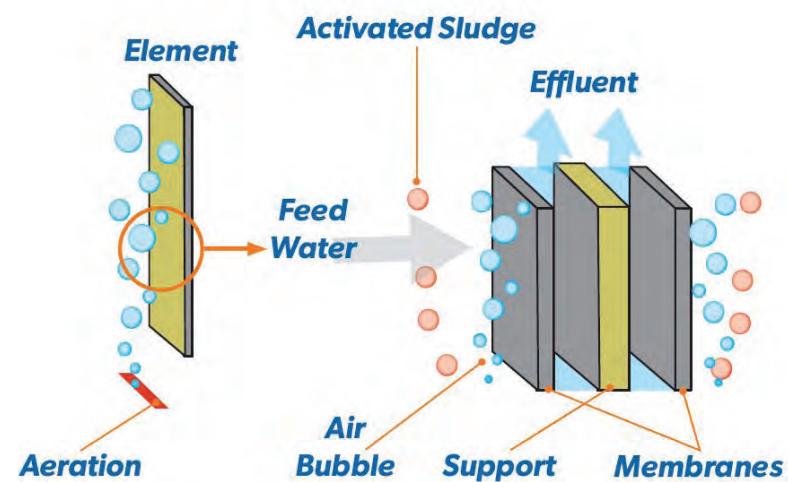


## What WesTech Offers

Headworks
Membrane Filtration
Digestion
Process Equipment
Programmable Logic Controls
Aeration Options
Energy Optimization



ClearLogic® MBR at Melville, NY.



## Extended Aeration vs. ClearLogic® MBR Treatment

	Extended Aeration Effluent	ClearLogic® Guaranteed Effluent	ClearLogic® Typical Effluent
BOD <sub>5</sub> mg/L	10	< 2	< 1
TSS mg/L	10	< 2	< 1
TN, mg/L	8	< 10	< 8
Turbidity, NTU	2	< 0.5	0.2

**WESTECH**® Tel: 801.265.1000  
westech-inc.com  
info@westech-inc.com  
Salt Lake City, Utah, USA

© WesTech Engineering Inc. 2015

Represented by: