

TRIME UK LTD

TRIME UK LTD **GENUINE** SPARE PARTS

FAST MOVING ITEMS



2017

**A Guide to the Genuine Manufactures parts
required to correctly Service & maintain your
Trime equipment**

TELEPHONE: 01480 220500



TRIME UK LTD

The Company



TRIME is a Company with in excess of 50 years' experience in Lighting Towers. We specialise in the design and production of machines for the Rental and Event market.

TRIME manufactures their machines from its 15000sqm premises on the outskirts of Milan. End to end production is all based in house from design, purchasing, metalwork fabrication, powder coating, electrics, and assembly to final testing.

TRIME have gathered together some of the best engineers and technicians operating in the tower light and electro-mechanical sector to ensure they have the best team working for you, our customer. Together they have developed a wide range of versatile, innovative, compact and modern machines that are suitable for a multitude of applications such as construction, event, roadwork's, mining, quarrying and security.

With the help of this team TRIME has grown over the past few years and together with the quality of the products have made huge inroads into the global market place with strategic sales in Europe, Asia, Africa and Australasia.

We adopt a customer oriented, innovative, smart and sustainable approach to the market so, we use only the highest quality materials and the latest technologies to maximise safety, efficiency and minimise costs.

The whole production process, from the design stage to the delivery, is very accurately controlled in every detail.

All of the above, with the added flexibility as one of our important features, gives us the capability of making prototypes for tailor built, custom solutions in a very short time. The use of the latest technologies allows us to maximise the value of our products, improve safety and lower the costs, whilst at the same time allows us to respect the environment with machines that have low CO2 emissions.

TRIME UK LTD

TRIME Genuine Spare Parts

TRIME would always advise using genuine replacement parts and adhering to the set Service Schedules for your machine. This will ensure that you maximise the life and earning potential of the machine. A well maintained and clean machine is also a safer item as noted by the HAE.

TRIME genuine spares are designed and manufactured to operate within the correct specification of your machine and will under normal conditions last considerably longer than some lower cost alternatives available in the marketplace.

In fact in many cases these lower cost parts do not comply to the manufacturers specifications and could ultimately cause damage and premature component failure in other parts if used.

Free delivery on
all orders above
£150



Free standard delivery on all orders of £150 and above

Next day UK mainland Terms and conditions apply

Full Repair and Maintenance Service available either at your premises or at our Huntingdon workshops, please contact our Service Department on 01480 220500 to arrange an estimate.

A FULL RANGE OF PARTS FOR ITALIAN MANUFACTURED LIGHTING TOWERS ARE ALSO AVAILABLE FROM TRIME UK LTD FOR INFORMATION PLEASE CALL 01480 220500



To Order Call: 01480 220500



TRIME CONTACTS



Norman Pipe
Parts Sales Manager

Tele: 01480 220500
Mobil: 07495 670269
Email: normanpipe@trimeuk.com



Wayne Brennan
Technical Support Manager

Mobil: 07494 654373
Tele: 01480 220500
Email: waynebrennan@trimeuk.com



Paul Hay
Managing Director

Tele: 01480 220500
Mobil: 07836 522223
Email: paulhay@trimeuk.com



Ray Caulfield
CEO

Mobil: 07970 140680
Tele: 01480 220500
Email: raycaulfield@trimeuk.com



Mark Taylor
Sales Manager

Tele: 01480 220500
Mobil: 07539 528017
Email: marktaylor@trimeuk.com



Sally Gunn
Accounts Administrator

Tele: 01480 220500
Email: admin@trimeuk.com

Table of Contents	Page
<i>THE COMPANY</i>	2
<i>TRIME GENUINE SPARE PARTS</i>	3
<i>TRIME UK CONTACTS</i>	4
<i>LED LIGHTING HEAD & MASTHEAD</i>	6
<i>GENERATOR / ELECTRICAL COMPONENTS</i>	13
<i>CONTROL PANEL</i>	14
<i>STABILISER COMPONENTS</i>	23
<i>ROAD-TOW COMPONENTS</i>	28
<i>X-SPLASH WASH-RACK COMPONENTS</i>	30

To Order Call: 01480 220500



TRIME UK LTD

LED LIGHTING HEAD & MASTHEAD



LED FLOODLIGHT

150w 24vdc

TRIME Part Number: AC000_E026_005
Original equipment on X-ECO 6 x 150w LED



FRAME FOR LED FLOODLIGHT

TRIME Part Number: LED 06_C000_09ZN
Original equipment on X-ECO



MULTIPOSITION HANDLE

TRIME Part Number: AC000_M000_007
Original equipment on X-ECO



48vdc LED DRIVER POWER SUPPLY

TRIME Part Number: AC000_E026_006
Original equipment on X-ECO

Important—Only fit TRIME Genuine Parts



FRONT SUPPORT STRUCTURE COVER

Please specify any branding at time of order

TRIME Part Number: LED_06_C000_012
Original equipment on X-ECO



JUNCTION BOX

Mast head Junction box

TRIME Part Number: AS000_E006_001
Original equipment on X-ECO



MAST COILED CABLE

TRIME Part Number: AC000_E006_016
Original equipment on X-ECO



JUNCTION BOX PROTECTION COVER

TRIME Part Number: LED_06_C000_08
Original equipment on X-ECO

To Order Call: 01480 220500



RUBBER HANDLE

TRIME Part Number: AC000_P037_001
Original equipment on X-ECO



HYDRAULIC CYLINDER

TRIME Part Number: AS000_I025_001
Original equipment on X-ECO



PULLEY D. 60

Ø 60mm

TRIME Part Number: AC000_M021_002
Original equipment on X-ECO



PULLEY D. 58

Ø 58mm

TRIME Part Number: AC000_M021_001
Original equipment on X-ECO

Important—Only fit TRIME Genuine Parts



PULLEY D. 62

Ø 62mm

TRIME Part Number: AC000_M021_003
Original equipment on X-ECO



PULLEY D. 63

Ø 63mm

TRIME Part Number: AC000_M021_008
Original equipment on X-ECO



STAINLESS STEEL ROPE

Ø 6mm - L 1460 mm

TRIME Part Number: AC000_M021_005
Original equipment on X-ECO



STAINLESS STEEL ROPE

Ø 6mm - L 1415 mm

TRIME Part Number: AC000_M021_006
Original equipment on X-ECO

To Order Call: 01480 220500



STAINLESS STEEL ROPE

Ø 6mm - L 1385 mm

TRIME Part Number: AC000_M021_007
Original equipment on X-ECO



STAINLESS STEEL ROPE

Ø 6mm - L 1440 mm

TRIME Part Number: AC000_M021_012
Original equipment on X-ECO



STAINLESS STEEL ROPE

Ø 6mm - L 1440 mm

TRIME Part Number: AC000_M021_004
Original equipment on X-ECO



RUNNER REINFORCEMENT

TRIME Part Number: PFI08_C031_012ZN
Original equipment on X-ECO

Important—Only fit TRIME Genuine Parts



ANGULAR RUNNER

TRIME Part Number: AS000_M000_005
Original equipment on X-ECO



SPIRIT LEVEL

TRIME Part Number: AC000_M016_001
Original equipment on X-ECO



MAST ROTATION LOCK PIN

TRIME Part Number: AC000_M000_003
Original equipment X-ECO



HYDRAULIC TANK CAP

TRIME Part Number: EC1270112
Original equipment on X-ECO

To Order Call: 01480 220500



ELECTROVALVE SOLENOID BODY

TRIME Part Number: F720002B1
Original equipment on X-ECO



ELECTROVALVE ENERGIZING COIL

TRIME Part Number: C150001A
Original equipment on X-ECO



ELECTROVALVE ENERGIZING COIL PLUG

TRIME Part Number: EC167002
Original equipment on X-ECO



ELECTROVALVE UNIT COMPLETE

TRIME Part Number: **X-ECO**ELECTROVALVE
Original equipment on X-ECO

Important—Only fit TRIME Genuine Parts

GENERATOR / ELECTRICAL COMPONENTS



GENERATOR CAPACITOR 20/25uf

Excitation Capacitor

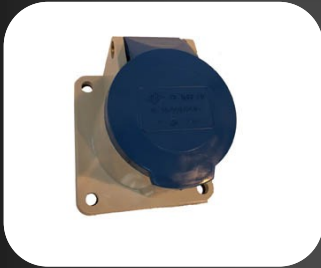
Please confirm uf rating on original Capacitor

TRIME Part Number:

Mecce Alte: M-9910303127

Linz: L-EX541511025

Original equipment on X-ECO



OUTLET SOCKET 230V 16A

TRIME Part Number: AC000_E011_007

Original equipment on X-ECO



THERMAL CIRCUIT BREAKER

12A Thermal Trip switch

TRIME Part Number: AC000_E012_013

Original equipment on X-ECO



PROTECTION FOR SOCKETS (OPTIONAL)

TRIME Part Number: XECOK2_C000_155

Original equipment on X-ECO

To Order Call: 01480 220500



EARTH POST

TRIME Part Number: AC000_M038_035
Original equipment on X-ECO



EMERGENCY STOP BUTTON

TRIME Part Number: SI000_G006_010
Original equipment on X-ECO

CONTROL PANEL



DEEP SEA CONTROLLER 3110

TRIME Part Number: AC000_E014_001
Original equipment on X-ECO



DEEP SEA CONTROLLER 401 MKII

TRIME Part Number: AC000_E014_003
Original equipment on X-ECO – K2

Important—Only fit TRIME Genuine Parts



LED LAMP SWITCH

TRIME Part Number: AC000_E012_027
Original equipment on X-ECO



RCBO *30mA 13a*

TRIME Part Number: AC000_E012_028
Original equipment on X-ECO



FUEL LEVEL INDICATOR

TRIME Part Number: AC000_E015_005
Original equipment on X-ECO



MAST CONTROL BUTTONS

TRIME Part Number: SI000_G006_006
Original equipment on X-ECO

To Order Call: 01480 220500



ON/OFF SWITCH

TRIME Part Number: SI000_G006_003
Original equipment on X-ECO



FINDER SENSOR CONTROLLER

TRIME Part Number: AC000_E016_002
Original equipment on X-ECO



12V BATTERY CHARGER REGULATOR

TRIME Part Number: K-RP20153710
Original equipment on X-ECO



CONTACTOR SWITCH

TRIME Part Number: AC000_E006_054
Original equipment on X-ECO

Important—Only fit TRIME Genuine Parts



ENGINE STOP TIMER

Stop Solenoid Timer

TRIME Part Number: K-T007031410
Original equipment on X-ECO



CIRCUIT BREAKERS PROTECTION

Waterproof cover protection for switches

TRIME Part Number: AC000_E000_008
Original equipment on X-ECO



12V - 70A RELAY

Glow Plug Relay

TRIME Part Number: AC000_E000_041
Original equipment on X-ECO



12V - 30A RELAY

12vdc 30amp Relay

TRIME Part Number: AC000_E000_040
Original equipment on X-ECO

To Order Call: 01480 220500



2A FUSE HOLDER

TRIME Part Number: AC000_E012_030
Original equipment on X-ECO



2A FUSE

TRIME Part Number: AC000_E012_014
Original equipment on X-ECO



SENSOR CONTROLLER CAPACITOR

TRIME Part Number: AC000_E000_070
Original equipment on X-ECO



FUEL SENDER UNIT

TRIME Part Number: AC000_E006_025
Original equipment on X-ECO

Important—Only fit TRIME Genuine Parts



FUEL TANK CAP

TRIME Part Number: AC000_M000_028
Original equipment on X-ECO



ANTI-VIBRATION BUFFER

TRIME Part Number: AC000_M024_054
Original equipment on X-ECO



SERVICE FILTER KIT

Filter Kit to Service Z482 engine

TRIME Part Number: X-ECOSERVKIT
Service Kit



MANUAL PUMP FOR OIL DRAINAGE

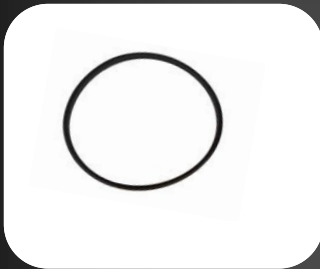
TRIME Part Number: AS000_M000_060
Original equipment on X-ECO

To Order Call: 01480 220500



SUMP OIL DRAIN HOSE PIPE

TRIME Part Number: AC000_G001_001
Original equipment on X-ECO



FAN BELT

TRIME Part Number: K-1588197010
Original equipment on X-ECO



FUEL LIFT PUMP

TRIME Part Number: K-R140151352
Original equipment on X-ECO



EXHAUST RAIN COVER CAP

TRIME Part Number: AC000_M000_080
Original equipment on X-ECO

Important—Only fit TRIME Genuine Parts



RADIATOR CAP COVER

TRIME Part Number: AC000_M001_035
Original equipment on X-ECO



RADIATOR CAP COVER RETENTION ROPE

TRIME Part Number: AS000_G031_083
Original equipment on X-ECO



X-ECO WARNING LABEL SET

Complete set of Warning Labels for X-ECO Lighting Tower Canopy

TRIME Part Number: X-ECO16-01
Original equipment on X-ECO



HANDLE WITH LOCK

TRIME Part Number: AC000_M000_017
Original equipment on X-ECO

To Order Call: 01480 220500



FRONT COVER

TRIME Part Number: XECO_AS009_058
Original equipment on X-ECO



REAR TOP CLOSING PANEL

TRIME Part Number: XECOK2_C007_113
Original equipment on X-ECO



RADIATOR GRILLE

TRIME Part Number: XECOK2_C008_167
Original equipment on X-ECO



HANDLE

TRIME Part Number: AC000_M000_005
Original equipment on X-ECO

Important—Only fit TRIME Genuine Parts

STABILISER COMPONENTS



CLOSING LOCK PIN

TRIME Part Number: AC000_M006_086
Original equipment on X-ECO



STABILIZER CRANK HANDLE

TRIME Part Number: AC000_M000_016
Original equipment on X-ECO



FRONT STABILIZER

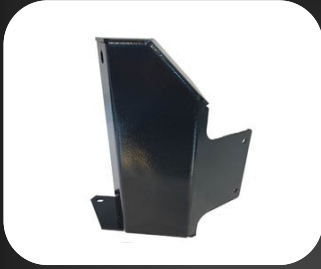
TRIME Part Number: XECOK2_C003_200
Original equipment on X-ECO



REAR STABILIZER

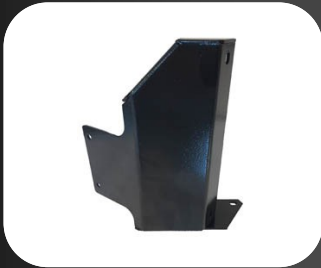
TRIME Part Number: XECOK2_C003_156
Original equipment on X-ECO

To Order Call: 01480 220500



REAR LEFT STABILIZER SUPPORT

TRIME Part Number: XECOK2_C000_097
Original equipment on X-ECO



REAR RIGHT STABILIZER SUPPORT

TRIME Part Number: XECOK2_C000_095
Original equipment on X-ECO



PIN LOCK WITH SPRING

TRIME Part Number: AC000_M000_077
Original equipment on X-ECO



REAR FIXING PLATE FOR STABILIZER BEAM

TRIME Part Number: XECOK2_C000_096
Original equipment on X-ECO

Important—Only fit TRIME Genuine Parts



LEFT STABILIZER BEAM

TRIME Part Number: XECOK2_C000_120ZN
Original equipment on X-ECO



RIGHT STABILIZER BEAM

TRIME Part Number: XECOK2_C000_119ZN
Original equipment on X-ECO



FRONT FIXING PLATE FOR STABILIZER BEAM

TRIME Part Number: XECOK2_C000_117
Original equipment on X-ECO



LIFTING EYE

TRIME Part Number: XECOK2_C036_088ZN
Original equipment on X-ECO

To Order Call: 01480 220500



DOOR HINGE

TRIME Part Number: AC000_M000_009
Original equipment on X-ECO



DOOR RETENTION ROPE

TRIME Part Number: AS000_M036_081
Original equipment on X-ECO



LED LAMP CABLE REPAIR KIT

TRIME Part Number: X-ECO FLEXREPAIRKIT
Repair Kit for the X-ECO



12V BATTERY 62ah

TRIME Part Number: AC000_E000_027
Original equipment on X-ECO

Important—Only fit TRIME Genuine Parts



RUBBER BUFFER FOR STABILISER

TRIME Part Number: XECOK2_R008_190
Original equipment on X-ECO



RUBBER BUFFER FOR MUDGUARDS

TRIME Part Number: XECOK2_R008_189
Original equipment on X-ECO



RIGHT MUDGUARD

TRIME Part Number: XECOK2_C004_069
Original equipment on X-ECO



LEFT MUDGUARD

TRIME Part Number: XECOK2_C004_070
Original equipment on E-ECO

To Order Call: 01480 220500

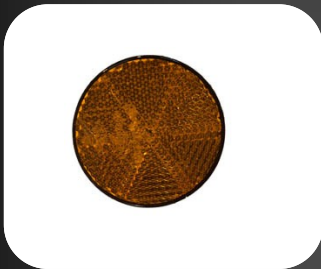


ROAD-TOW COMPONENTS



WHITE REFLECTOR

TRIME Part Number: AC000_T013_001
Original equipment on X-ECO



ORANGE REFLECTOR

TRIME Part Number: AC000_T013_002
Original equipment on X-ECO



AMOSS SWITCH

TRIME Part Number: SI000_E006_009
Original equipment on X-ECO



JOCKEY WHEEL

TRIME Part Number: AC000_T003_003
Original equipment on X-ECO

Important—Only fit TRIME Genuine Parts



MULTI-FUNCTION REAR LIGHT KIT

TRIME Part Number: SE000_E013_001
Original equipment on X-ECO



LIGHT FOR REGISTRATION PLATE KIT

TRIME Part Number: SE000_E013_002
Original equipment on X-ECO



ELECTRICAL BOX

TRIME Part Number: AC000_G006_001
Original equipment on X-ECO



COILED CABLE & ELECTRICAL CONNECTOR FOR TOWING

TRIME Part Number: AC000_E013_001
Original equipment on X-ECO

To Order Call: 01480 220500



X-SPLASH WASH-RACK COMPONENTS



THE X-SPLASH WASH-RACK

The X-Splash Wash-Rack is a self-contained, environmentally friendly cleaning system for tools, mobile construction plant and equipment. It provides a simple cleaning solution which prevents soil pollution or accidental contamination of drains from oil, grease and other contaminants.



Chlorine Tablets

*Soluble Chlorine Tablets for water dosage
5 x 20g per Kit*

TRIME Part Number: X-SPLASHCHLORINE20G
Original equipment on X Splash Wash-Rack



Chlorine Dosing Float

Chlorine Tablet controlled dosage Float

TRIME Part Number: X-SPLASHDISPENSER
Original equipment on X Splash Wash-Rack

Important—Only fit TRIME Genuine Parts



Oil & Hydrocarbon Absorbent Mats

Oil & Hydrocarbon Absorbent Mats for separator tanks

TRIME Part Numbers:

Large Mat: VL-C004_11_C010

Medium Mat: VL_C004_10_C0002-3

Small Mat x 3: FL-VL_C004_05

Mat Kit: X-SPGM-KIT

Original equipment on X-Splash Wash-Rack



Final Filter Cartridge

Filter Element for final water outlet Filter

TRIME Part Number: CDR.7255

Original equipment on X-Splash Wash-Rack

X-ECO USEFUL INFORMATION

X-ECO Tyre Pressure - 65PSI

X-ECO Tyre Bolt Torque - 65 lb/ft

X-ECO Axle Hub Nut Torque - 214 lb/ft +/- 7.5lbs/ft, (290n/m +/- 10n/m).

X-ECO Fuel Tank Capacity - 110 Litres

X-ECO Average run time per Tank - 230 Hours

X-ECO Noise Level - 65dbA @ 7 Meters

X-ECO Minimum Dimensions L x W x H - 232 x 138 x 242 cm

X-ECO Maximum Dimensions L x W x H - 232 x 155 x 850 cm

X-ECO Maximum Wind Speed - 110 km/h

X-ECO Illuminated Area (5 Lux min) - 3800 m²

X-ECO Weight - 936 Kg

To Order Call: 01480 220500



TRIME UK LTD



TRIME UK LTD

*B3 Spitfire Close
Ermine Business Park
Huntingdon
PE29 6XY*

*Phone: 01480 220500
Fax: 01480 220501
E-mail: sales@trimeuk.com
Website: www.trimeuk.com*

THE LIGHTING TOWERS SPECIALISTS