

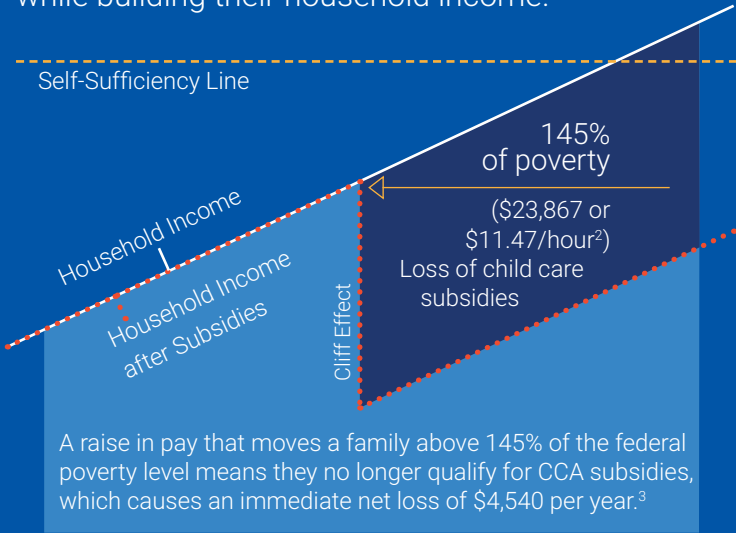
THE CLIFF EFFECT

If families can maintain Child Care Assistance while earning more, they are more likely to achieve financial self-sufficiency.

WORKING FAMILIES

94.7% of parents receiving Child Care Assistance (CCA) are working, but a raise of just 15 cents an hour could put them in jeopardy.¹

Research shows families can reach self-sufficiency at 200% of the federal poverty level. A child care subsidy can help families achieve self-sufficiency while building their household income.



¹ Iowa Department of Human Services, 2018

² Federal Register, Federal Poverty Guidelines, 2018

³ Child and Family Policy Center, 2018

BUSTING THE BUDGET

Top costs for an Iowa family of four (2 adults, 1 infant, 1 preschooler):

\$1,035
Child care

\$800
Health care

\$659
Housing

ALICE Report, 2018



vs



Average annual tuition at an in-state public university

CollegeTuitionCompare.com, 2018

Average annual cost for an infant at a licensed child care center

Child Care Aware of America, 2018

IOWA'S WORKFORCE CHALLENGE

If families had affordable, quality child care, employers could retain and attract talent.

WORKING FAMILIES

Iowa ranks No. 1 (tied with MN & NE at 75%) of states with children under age 6 who have all available parents in the labor force, making child care a necessity.

Kids Count, 2017



LOST PRODUCTIVITY

Because of child care issues:

8.6
days of work are missed each year per parent.

65%
of parents are late to work or leave early.

17,916
parents quit a job, did not take a job, or greatly changed their job in 2016.

Iowa Women's Foundation, 2018

65.1%

of women with young children are working.

U.S. Dept. of Labor, 2017



Parents who have changing work schedules or work hours outside of Monday-Friday, 8:00 a.m.-5:00 p.m., have the greatest difficulty finding child care.

National Women's Law Center

48%

CHILD CARE DESERTS

Decrease in the number of programs accepting Child Care Assistance since 2012.

CCR&R, July 2018

89%

The average cost of full-time child care in Iowa is 89% of the income of someone working full time at minimum wage.

The Care Report, 2016

85%

ATTRACTING TALENT

of job applicants wish their employer offered child care benefits.

Iowa Women's Foundation, 2018