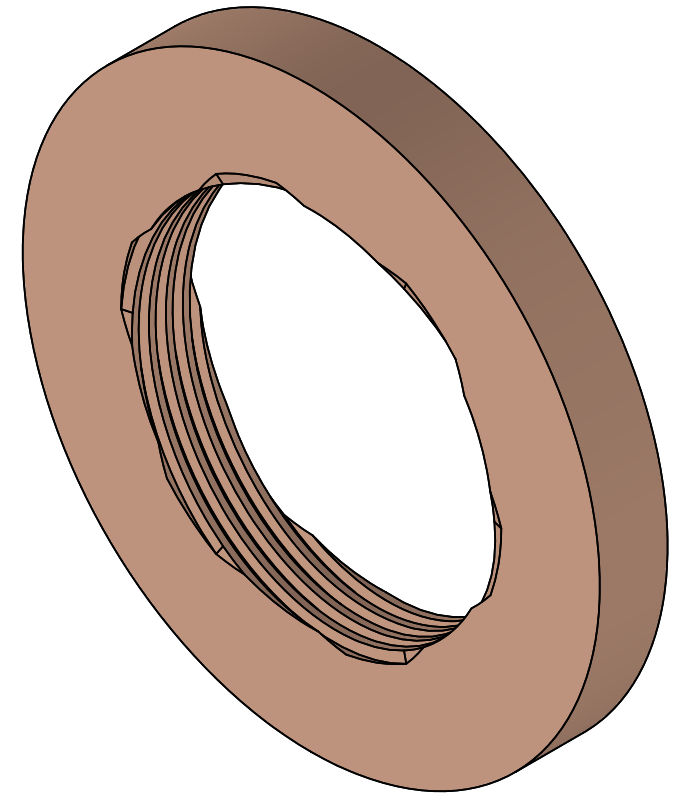
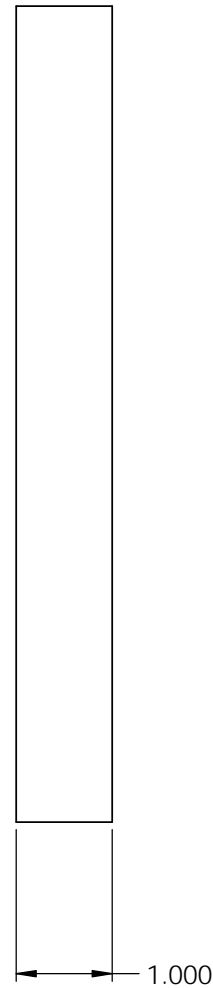
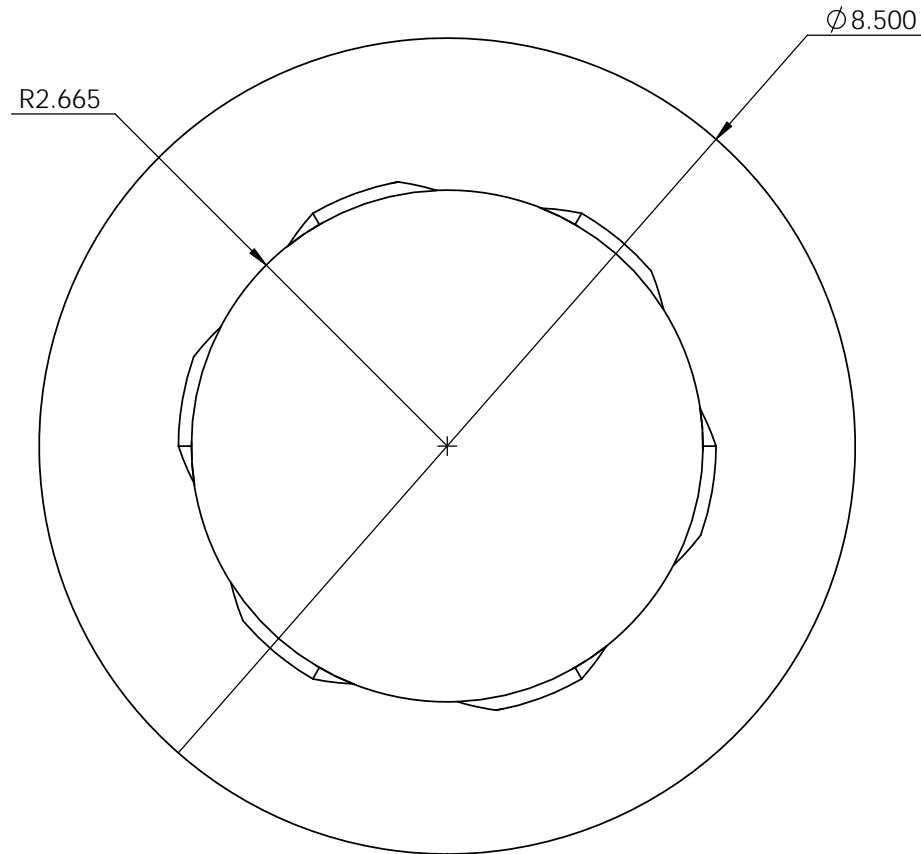



Six lead nut
 O.D. 8.500
 I.D. 5.330
 Depth of thread .148
 In feed angle- 0 deg
 Number of starts- 6
 Thread- Acme #7



PROPRIETARY AND CONFIDENTIAL
 THE INFORMATION CONTAINED IN THIS DRAWING IS THE SOLE PROPERTY OF ENGINEERING SPECIALTIES, INC.. ANY REPRODUCTION IN PART OR AS A WHOLE WITHOUT THE WRITTEN PERMISSION OF ENGINEERING SPECIALTIES, INC. IS PROHIBITED.

		UNLESS OTHERWISE SPECIFIED: DIMENSIONS ARE IN INCHES TOLERANCES: FRACTIONAL ± ANGULAR: MACH ± BEND ± TWO PLACE DECIMAL ± .01 THREE PLACE DECIMAL ± .005	DRAWN	NAME	DATE	 ENGINEERING SPECIALTIES, INC. 452 Twin Lakes Road North Branford, CT 06471 TITLE: 8.500" Bronze Nut
		INTERPRET GEOMETRIC TOLERANCING PER:	CHECKED			
		COMMENTS:	ENG APPR.			
		FINISH	MFG APPR.			
NEXT ASSY	USED ON		Q.A.			SIZE B
APPLICATION		DO NOT SCALE DRAWING	MATERIAL: C63000 Bronze			DWG. NO. 0310200-000
						REV
						SCALE: 1:1
						WEIGHT:
						SHEET 1 OF 1