

Pronunciation Practice is designed to be used as a supplement to **Practical English** from A1 – B2 level. The course uses speech recognition software to allow learners to practice their pronunciation of key words and phrases from **Practical English**, and to improve their overall accuracy with intonation and specific phonemes.

Level: CEFR A1 – B2

Number of Lessons: 140 (Digital)

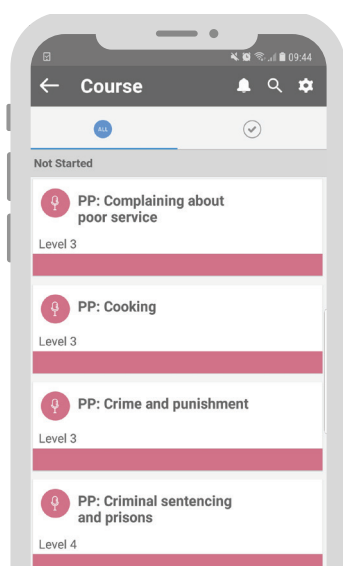
Lesson Duration: Approx. 5 mins (Digital)

Key Content: Business; Everyday Life; Leisure and Entertainment; People and Relationships; Nature and the Environment; Society; Travel and Transportation

About Pronunciation Practice

Pronunciation Practice offers an efficient way for students to improve their pronunciation skills. When used alongside either **Practical English Starter (A1)** or **Practical English 7 (A2 – B2)** it provides useful supplementary practice of the words and phrases students will encounter in each course.

Pronunciation Practice can be easily added to the **Practical English** portfolio. It is recommended that once a student has completed a lesson in either **Practical English Starter** or **Practical English 7**, they should do the correlating pronunciation practice lesson. This will use the key language and phrases that have already been practiced, and provide both consolidation and extended speaking practice.

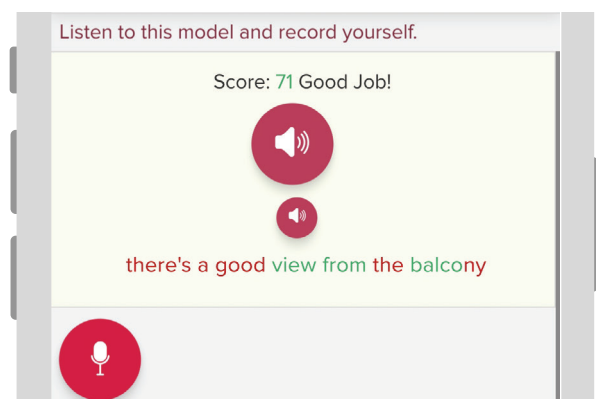


Speech Recognition Technology

Lessons in **Pronunciation Practice** are kept short, and are easy to use. They follow a basic 'study and test' structure which can be completed in approx. 5 minutes, and repeated as required.

At the start of each lesson students are presented with a set number of words and phrases, either in definition or illustrated format. They are able to listen to language in context, and hear the appropriate intonation and pronunciation.

Students then move into the test phase where they can use the record and playback function to practice their own pronunciation. After each attempt, the speech recognition software will compare their recording with the models, and provide an overall score along with an indication of words that are problematic.

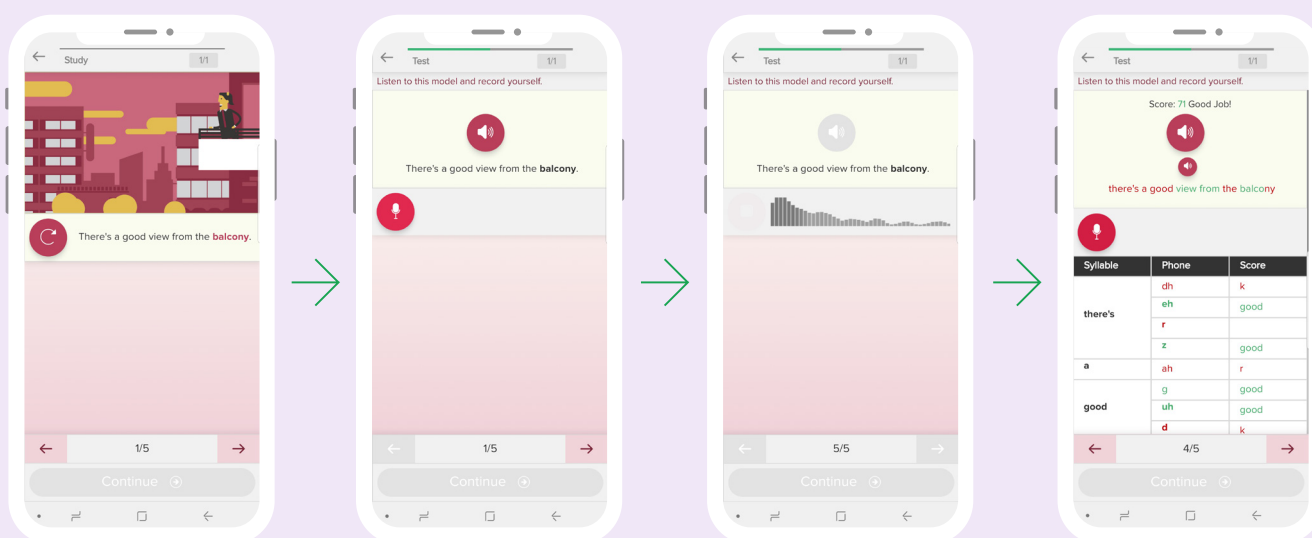


Pronunciation Practice features:

- 140 short pronunciation lessons from A1 – B2 covering a wide range of everyday topics.
- Language that is clearly linked to the lesson aims of **Practical English Starter**, and **Practical English 7**.
- Study sections that present everyday words and sentences for focused listening practice.
- A record and playback function for students to compare their pronunciation with language models.
- Speech recognition technology that identifies problem areas, and allows students to check their accuracy.

Lesson Flow

Lessons follow a simple, yet systematic Study and Test cycle with a focus on specific words and phrases. Each lesson is kept short allowing students to complete the material at pace, and when they have time.



Words and phrases are presented in context - either through illustration or dictionary format.

Students are given the opportunity to practice the model multiple times through a record and playback function.

Speech recognition technology tracks their input, and helps them visualise intonation.

The scoring mechanism shows students how well they did overall, and their areas for improvement.

The lesson content of **Pronunciation Practice** is customizable to make mini-courses that will fit specific syllabus and program requirements.