



## PRODUCT SPECIFICATIONS:

# INSTALERT 18 VARIABLE MESSAGING SIGN

### InstAlert Radar Message Sign

- **InstAlert 18 (IA18):** 18" x 28" full matrix (InstAlert 24 (IA24) 24" x 60" full matrix also available – see separate InstAlert 24 Spec Sheet)
- Size and weight without battery
  - o 30" x 20" x 2.74", 29 lbs
- Full matrix display
- **Universal mounting system:** Attach to pole, trailer or vehicle hitch mount
- Meets MUTCD Specifications

### InstAlert Operation Modes

- **Message Mode:** Display one message, up to six screens
- **All Messages:** Sequence all messages in sign memory
- **Schedule:** Change message and/or mode up to 13 times/day
- Sign returns to last configuration when power applied

### InstAlert Programming Methods

*On-Board Programming (standard on all units)*

- Select operation mode
- Select message from sign's memory

### TraffiCloud™ Web-based Remote Management Services:

Remote Management using integral cell modem  
(See TraffiCloud specification for more information):

- Turnkey system. Remote connectivity functional upon ship. Unit connects to TraffiCloud Service when sign powered
- Fully hosted web-based management system
  - o Internet connected computer with browser provides anywhere access on all connected devices with browser
  - o No IT involvement or support necessary. System bypasses customer network, eliminating access issues
  - o Cellular provided by ATS, no separate cellular charges
  - o Hosted database requires no setup or maintenance by customer

### Apps – All apps included in TraffiCloud Message Suite:

- **Equipment Management:** Online sign management —Change messages and settings remotely
- **Alerts:** Notifications for low battery and tampering
- **Mapping:** Visually manage equipment and data
  - o PremierCare perpetual warranty

### ATS PC Sign Manager

Local Management using PC with USB connection standard with all signs, Bluetooth optional

- PC-based client software
- Connect to sign via USB or Bluetooth (optional)

### **ATS Android App:** *Local Management (Optional):*

- Android OS wireless Bluetooth control local to unit
- Android device can be phone or WiFi device with Bluetooth

### **Local Management Features:** *(PC and Android)*

- Create and change messages and settings  
Manage all unit settings, automatic sync with
- TrafficCloud Web-based Remote Management Service if subscribed
- All messages saved for online management and backup
  - o Create message and save to TrafficCloud library, messages available on all ATS Android App or PC Sign Manager devices with TrafficCloud subscription

### **InstAlert Messages**

- **IA18:** 1-2 line messages
  - o **1 line:** 10 1/4" H x 5.75" W characters, four per line
  - o **2 lines:** 7" H x 4" W characters, six per line
- Up to six screens per message
- Full graphics capability, each LED individually controllable
- Variable display time, flash and reverse rates for each screen
- Scroll through 25 user defined onboard messages using selector buttons built into sign, no training necessary
- Ability to sequence messages for up to 144 screen animation
- Message power efficiency calculator in software
- Actual sign preview and unlimited message storage using TrafficCloud Web-based Remote Management Service, ATS PC Sign Manager or ATS Android app
- Messages on sign retained when power removed
- Sign returns to last message when power applied
- Conditional Messaging – Dynamically display messages driven off sensors and/or incorporate into messages

### **InstAlert Programming**

Configure the following parameters via TrafficCloud Web-based Management System, ATS Android app or PC Sign Manager

#### • **Messages**

- o Create and load message using 'Display Now' feature
- o Load 24 messages into sign's memory
- o Scroll messages in sign's memory
- o Display signs stored in TrafficCloud Web, ATS Android app or PC Sign Manager

### **Scheduling**

- **All Days, Multiple Messages:** Schedule up to 50 different messages or modes for up to 13 different time periods in a 24 hour day, repeats in each 24-hour cycle
- **Seven Day, Multiple Messages:** Schedule different messages or modes for up to 13 different time periods in each 24-hour day for each of seven days, repeats in each seven day cycle; up to 50 different messages can be used over the seven day period
- All messages and scheduling reside on the sign – no external hardware necessary
- Program schedule via TrafficCloud Web, ATS Android app or ATS PC Sign Manager, save to load onto multiple signs
- Internal real-time clock, time and schedule maintained with power disconnected

### Construction

- **LED Pixels:** Amber 595nm, 30 degree viewing angle, 100,000 hours, black background, (MUTCD compliant)
- **LED Density:** 0.6" x 1" pitch, 18 x 48 pixel matrix
- Conformal coating on all circuit boards
- Integral handle
- Weatherproof, NEMA 4, IP65 sealed
- ¼" Tinted, non-glare, UV stabilized polycarbonate face
- Drip proof, vented battery compartments (2)
- Aluminum chassis, 14 ga, white powder coat finish, black powder coat front for maximum contrast for display visibility
- Tamper-resistant mounting hardware system, hardware, controls and battery access secured behind enclosure lock
- -40 to 160 F operating temperature range, 95% humidity non-condensing (-20F for Bluetooth communication, 5F for internal camera)

### InstAlert Power

- **Power Input, Max:** 12 VDC, 3 A max, 36 W max
- Power saving circuitry and automatic dimming for ambient light conditions with adjustable dimming range and manual display brightness override
- **InstAlert 18 Power Options:**
  - o 16Ah LFP battery with built-in short circuit and reverse polarity protection circuitry; 1.5A 12.8 VDC output, 120VAC input automatic charger; Capacity for up to 2 batteries in unit for extended portable use
  - o Solar panel assist: 40W or 60W solar panel and bracket, Solar controller panel with 26Ah lead acid battery; 6A 120VAC automatic charger optional
  - o 100-220VAC AC power supply (6A 12VDC) in external NEMA 4 enclosure

## Mounts on pole, stand, vehicle or ATS Trailer

Engineered and manufactured in the USA



- o ATS 5 Trailer (batteries with optional solar assist: 235 or 470 Ah battery system, 40 or 60W solar option)
- o ATS 3 Trailer, 100Ah battery and 40W solar option
- Battery level indicator on sign, ATS Android app, ATS PC Sign Manager or TrafficCloud Remote Management
- Auto recovery for battery with solar

### Standard InstAlert System Components

- InstAlert Variable Message Sign IA18
- Tamper-resistant mounting plate and hardware
- Key
- On-board controls
- ATS PC Sign Manager software with USB cable

### Optional InstAlert Components and Features

- TrafficCloud Web-Based Remote Management Service
- ATS Android app, Bluetooth connectivity
- Padded carrying case
- Extra mounting brackets
  - o 7A, 30VDC or 7A 120VAC max, 100mA 5VDC min, no power supplied, simply a contact closure
- Tamper Alarm: ATS 5 or ATS 3 Trailer

### InstAlert Mounting Options

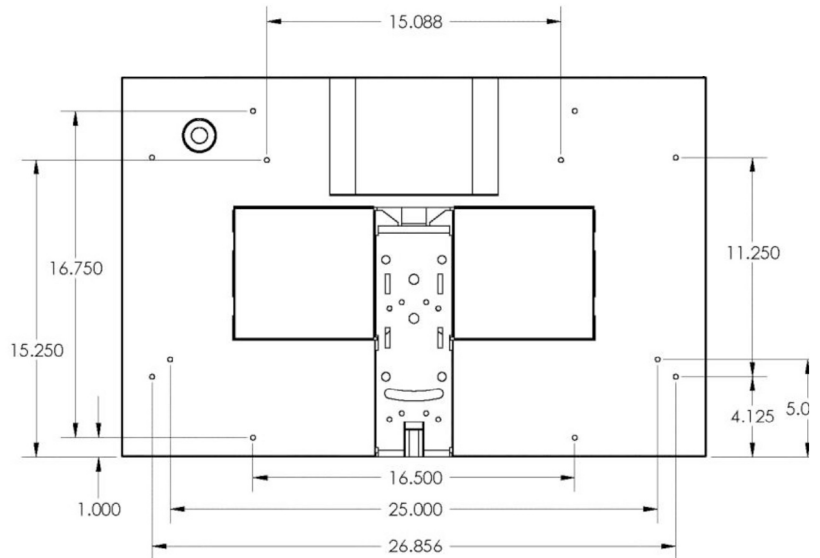
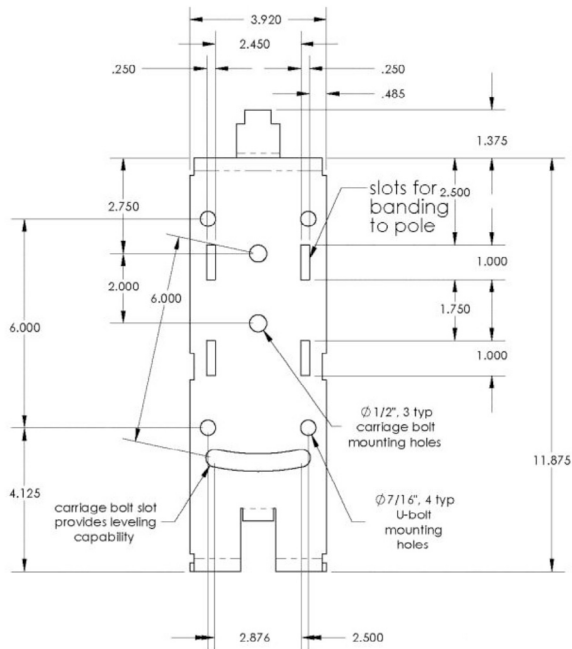
- Pole mount standard with included bracket, hardware

- NCHRP 350 approved on 4" pole (Letter SS-135)
- ATS 5 Trailer (refer to ATS 5 specifications for more information)
- ATS 3 Trailer (refer to ATS 3 Trailer specifications for more info)
- **Vehicle Hitch Mount**
  - o Mounts sign 30" to bottom of sign from receiver tube (final height dependent on receiver height)
  - o Fits 1 1/4" or 2" receiver, adapter included, 1/2" hitch pin
  - o Locking rotation adjustment on 15 degree increments over 180 degrees, +/- 5 degrees tilt
  - o White powder coat finish with rear reflector
- **Standard Folding Portable Post**
  - o Folds for easy storage and portability
  - o **IA18:** 60" to 73" to bottom, 80" to 93" to top of sign depending on leg positions
- Mounting provisions for permanent applications with 1/4-20 threaded holes

### PremierCare Warranty

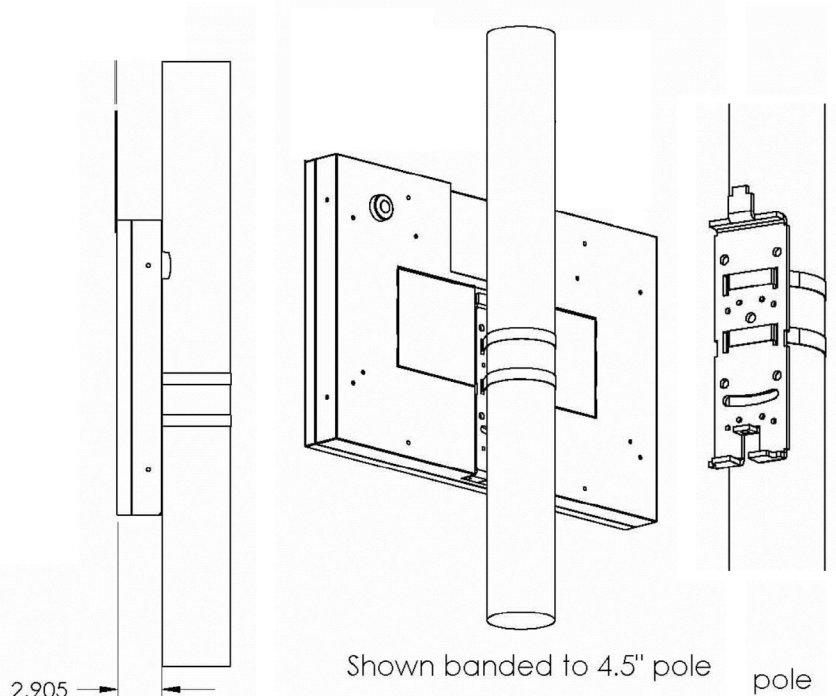
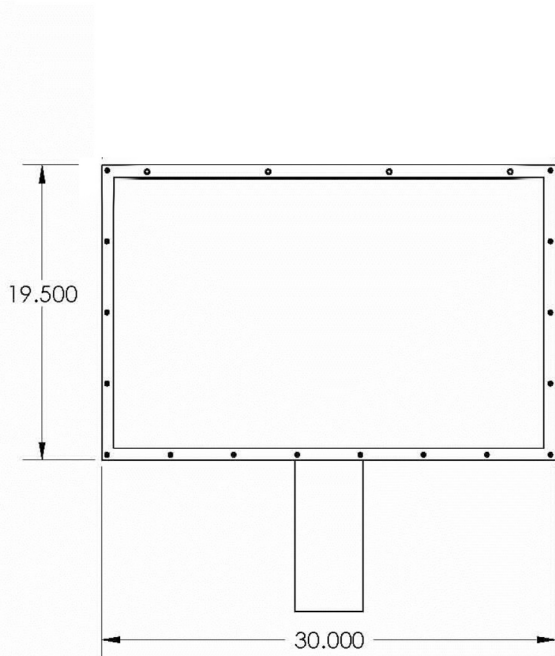
- 1-year warranty (three months on Li-Ion batteries)
  - o Product software upgrades free
- PremierCare included with TrafficCloud Web Subscription
  - o Perpetual warranty for the duration of subscription
  - o Accessories, vandalism and accidental damage (non-warranty) at 50% off list price

## InstAlert 18 Mounting Bracket and Mounting Holes



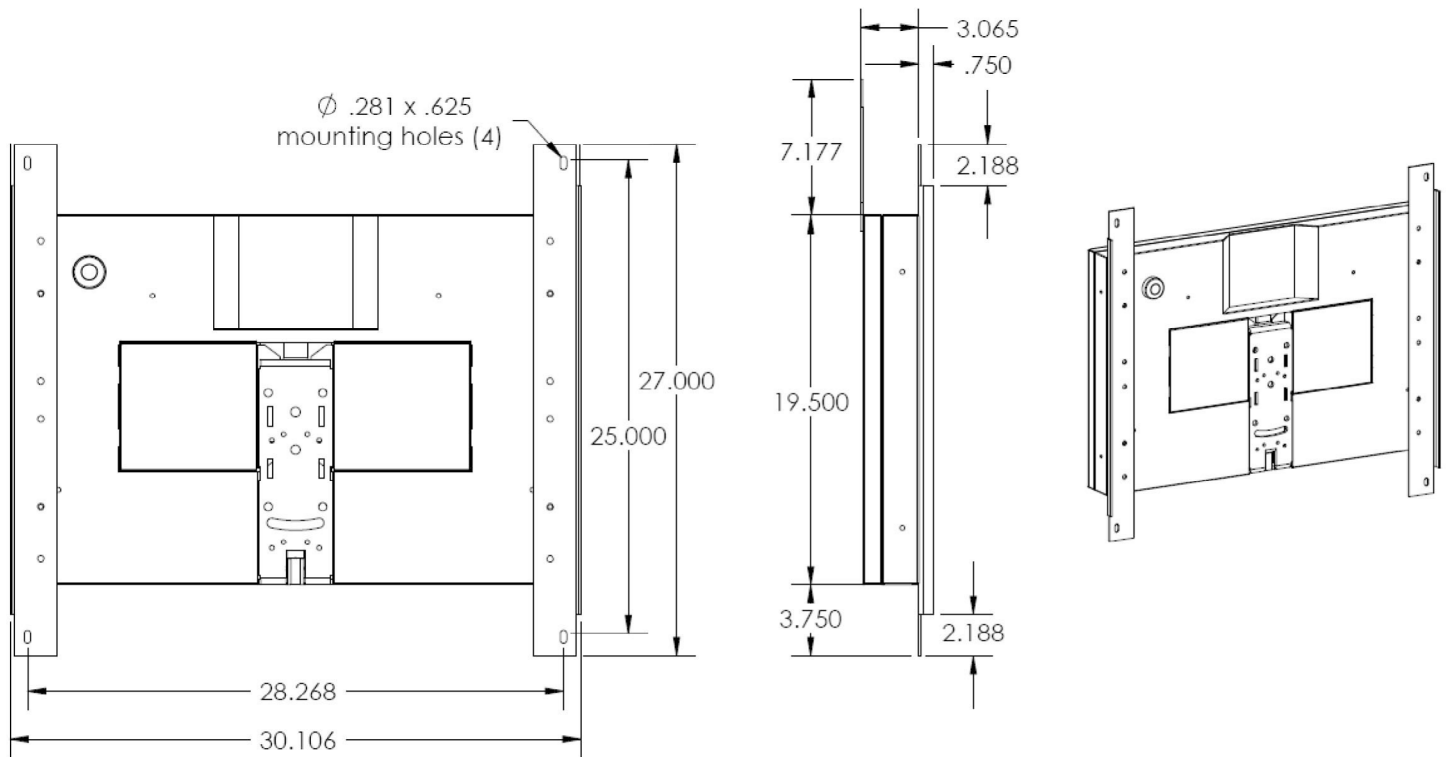
Additional Mounting Provisions:  
1/4-20 thread, captive nuts

## InstAlert 18 Dimensions



Shown banded to 4.5" pole pole

## InstAlert 18 with Trailer Mounting Brackets Installed – for Installation on Existing Trailers for Trade-in



**All Traffic Solutions** 12950 Worldgate Drive, Suite 310, Herndon, VA 20170

Phone 866.366.6602 | [sales@alltrafficsolutions.com](mailto:sales@alltrafficsolutions.com) | [AllTrafficSolutions.com](http://AllTrafficSolutions.com)

©All Traffic Solutions

TraffiCloud leverages our patented technology (US Patents 8,417,442; 8,755,990; 9,070,287; 9,411,893) to deliver unique cloud-based management, features and functionality.