



# ADRF Solutions for Commercial Real Estate

Reliable Communication in Your Building Depends on ADRF



THE SIGNAL FOR SUCCESS™

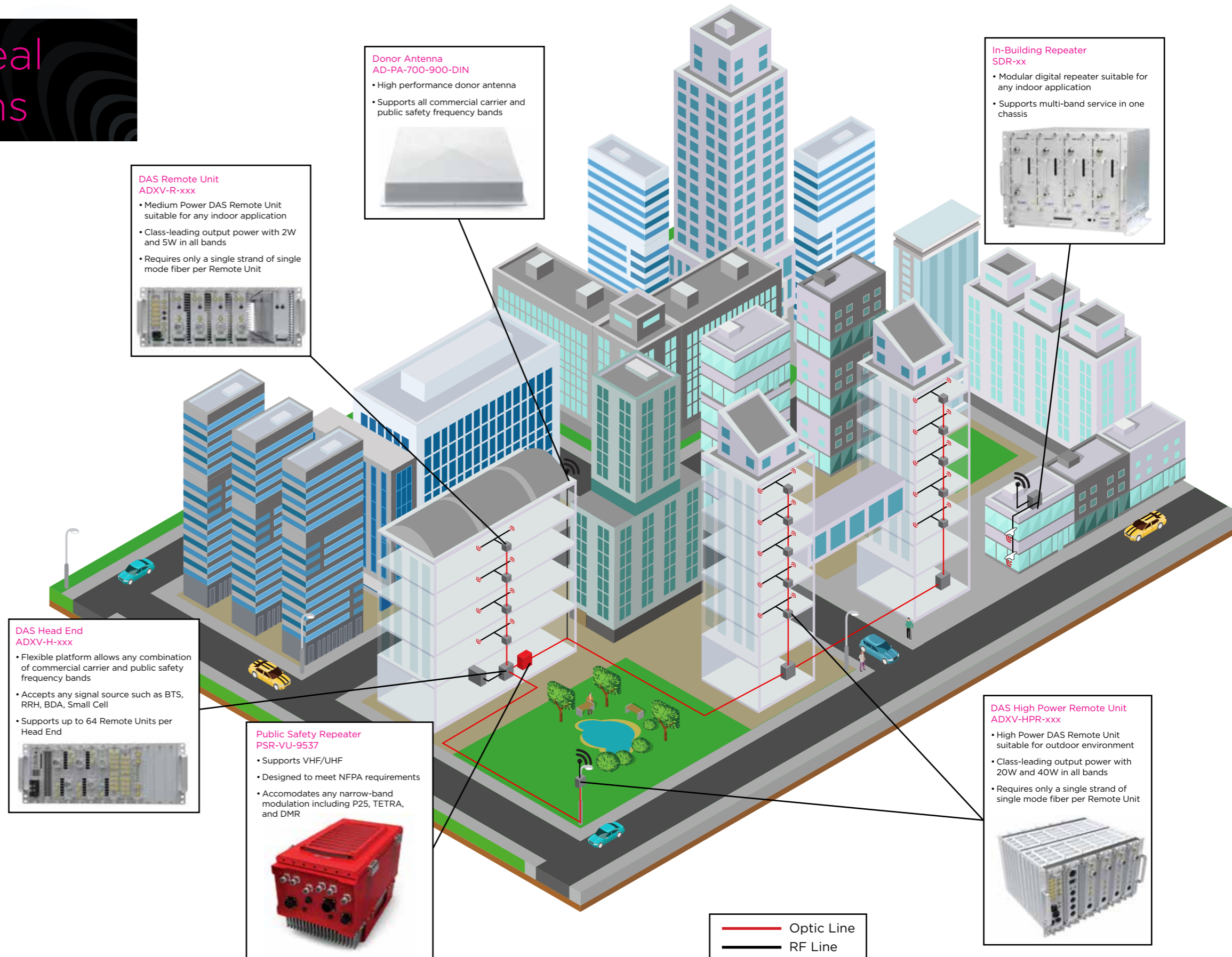
# ADRF Commercial Real Estate (CRE) Solutions

## CHALLENGE

In today's commercial real estate market, property owners and managers are always looking for ways to keep their tenants satisfied and keep their properties fully occupied. Offering building amenities including a seamless communication network is becoming a necessity to attract tenants. However, the increasing demand for voice and data usage on traditional cellular network brings property managers an increasing number of challenges when trying to meet the wireless needs of their tenants. Many companies are replacing landlines with smart phones as their main means of both personal and business communications. Also, some companies implement BYOD (Bring Your Own Device) policies expecting facilities to support multiple wireless carrier networks. Providing adequate cellular coverage and capacity for multi-tenant buildings in dense urban areas that are comprised of steel, concrete and glass, oftentimes now built to be LEED certified, is not an easy job.

## SOLUTION

REITs, owners, managers, developers, and other commercial real estate services companies are increasingly discovering the critical importance their tenants and visitors place on being able to use their mobile devices indoors. ADRF has a long history of solving these issues for commercial real estate clients with the same carrier-grade equipment that Tier I Carriers trust in their networks. Sophisticated yet cost-effective, our active fiber DAS, repeaters, and other industry-leading equipment enable a rich wireless experience throughout any building or corporate campus. ADRF solutions meet the need for complete, clear, reliable coverage in any office size or shape. Flexible and easy to install with minimal disruption, ADRF solutions can grow and change with structural or service needs.



Like electricity, water, and HVAC, robust in-building wireless coverage is not a “Nice-To-Have” but, rather, a key “Must-Have” for building owners, property managers, and tenants.

# Selected ADRF Commercial Real Estate Deployments

## AT&T GLOBAL ENTERTAINMENT (formerly DirectTV)



**Location(s):** El Segundo, CA  
**Scope:** 5 buildings, multi-sector system  
**Total Area:** 1,000,000 sq. ft.  
**Carriers:** AT&T, Verizon, T-Mobile, Sprint  
**Frequency Bands:** 700 MHz, SMR 800/900 MHz, Cell 850 MHz, PCS 1900 MHz, AWS 2100 MHz

## BOEING



**Location(s):** Bellevue, WA  
 Huntington Beach, CA  
 Seal Beach, CA  
**Scope:** 2 buildings, 13 floors;  
 17 buildings;  
 1 building  
**Total Area:** 420,000 sq. ft.;  
 1,000,000 sq. ft.;  
 80,000 sq. ft.  
**Carriers:** Verizon for all locations  
**Frequency Bands:** 700 MHz, Cell 850 MHz,  
 PCS 1900 MHz,  
 AWS 2100 MHz for all locations

## E-TRADE FINANCIAL



**Location(s):** Arlington, VA  
 Menlo Park, CA  
**Scope:** 5 floors; 2 floors  
**Total Area:** 102,000 sq. ft.;  
 68,000 sq.ft.  
**Carriers:** AT&T, Verizon, Sprint, T-Mobile  
**Frequency Bands:** 700 MHz, SMR 800/900 MHz,  
 Cell 850 MHz, PCS 1900 MHz,  
 AWS 2100 MHz for all locations

## EXXONMOBIL



**Location(s):** Woodlands, TX  
**Scope:** 3 buildings, 25 floors,  
 multi-sector system  
**Total Area:** 660,000 sq. ft.  
**Carriers:** Verizon  
**Frequency Bands:** 700 MHz, Cell 850 MHz,  
 PCS 1900 MHz, AWS 2100 MHz

## QUALCOMM (Headquarters)



**Location(s):** San Diego, CA  
**Scope:** 3 buildings, 14 floors  
**Total Area:** 660,000 sq. ft.  
**Carriers:** Sprint  
**Frequency Bands:** PCS 1900 MHz,  
 TD-LTE BRS 2.5 GHz

## SPRINT (World Headquarters Campus)



**Location(s):** Overland Park, KS  
**Scope:** 10 buildings, 4 floors,  
 multi-sector system  
**Total Area:** 3,900,000 sq. ft.  
**Carriers:** Sprint  
**Frequency Bands:** TD-LTE BRS 2.5 GHz

**Web** [www.adrftech.com](http://www.adrftech.com)

**Tel** +1 818.840.8131 **Fax** +1 818.840.8138

**Technical/Customer Support** +1 800.313.9345  
 3116 West Vanowen Street Burbank, CA 91505



TL9000



THE SIGNAL FOR SUCCESS™