



Campus Fiber Solutions Ordering Guide:

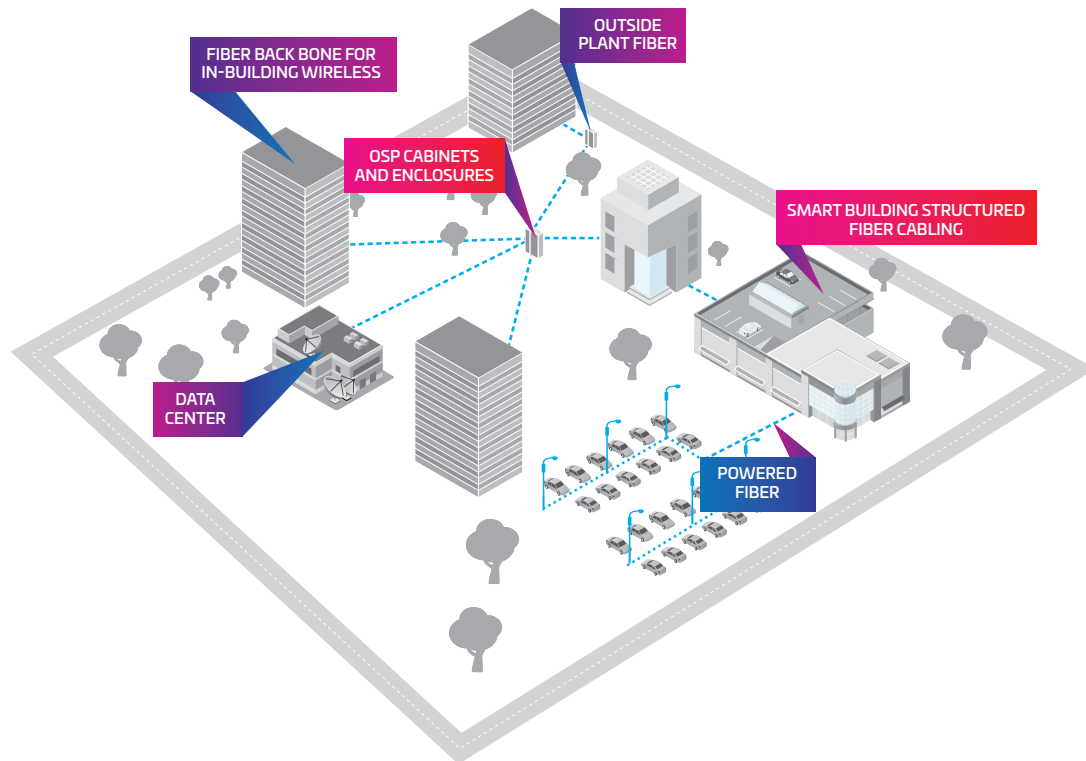
Tap the potential in your campus network

Table of contents

Campus fiber solutions.....	3
Fiber optic connectors.....	4
Field installable QWIK II connectors and tool kits	4
Anaerobic fiber optic connectors and tool kits.....	4
Fiber Break-out kits.....	4
Fiber cable clamps.....	4
Fiber optic panels.....	5
Rack mount panels.....	5
Wall mount panels.....	5
- SD splice cassettes	6
- SD adapter panels.....	7
Fiber optic cables.....	8
Indoor cables.....	8
Indoor/outdoor stranded loose tube cables.....	9
Outside plant cables	9
Outdoor composite cables.....	10
Fiber optic pigtail configurator.....	11
Fiber optic patch cord configurator	12
Uniboot patch cord configurator	13
Fiber optic splicing hardware.....	14
Fiber entrance cabinets (FEC).....	14
Fiber entrance cabinets (FEC) accessories	15
FOSC splice closure.....	16
- FOSC 450 kits	16
- Tray kits	16
- Ribbon tray kits	16
- Splice protectors	16
- Accessories	16
Powered fiber cable system.....	17
Resources.....	18
Support.....	19

Campus fiber solutions

More than IT, your campus fiber network supports the wireless communications, connected devices, applications and systems that drive productivity within and among buildings. As its role increases, so do the demands placed upon it. 1 Gbps in-building cabling, once considered sufficient, must evolve toward 40 Gbps, 100 Gbps and beyond.



At CommScope, we see the untapped potential in your campus network. Advances in fiber cabling and connectivity now support faster speeds, over longer distances and with greater reliability. We help you put it to work.

Our campus network portfolio includes singlemode and multimode cabling, connectors, panels, enclosures, splice equipment and more. All components are certified to meet or exceed industry standards. A unique WebTrak® serial number lets you trace and verify the performance of each individual cable, fiber assemblies, modules and more.

This easy-to-use ordering guide features our most commonly used campus fiber elements. For more information, visit our [online catalog](#) or [contact your CommScope representative](#).

Your campus network is capable of more and getting you there is our priority.

Partner with CommScope and let's shape the future of your campus network together.

Campus Fiber Solutions



FIELD INSTALLABLE QWIK II CONNECTORS AND TOOL KITS

Material ID	Product Number	Description
760117911	MFC-LCF-09-5X-25-PACK	QWIK II Connector, LC , OM4/OM3, for use on 250um and 900um buffered fiber, 25 pk
760117929	SFC-LCF-09-8X-25-PACK	QWIK II Connector, LC , OS2-UPC, for use on 250um and 900um buffered fiber, 25 pk
760117978	MFC-SCF-09-5X-25-PACK	QWIK II Connector, SC , OM4/OM3, for use on 250um and 900um buffered fiber, 25 pk
760117986	SFC-SCF-09-8X-25-PACK	QWIK II Connector, SC , OS2-UPC, for use on 250um and 900um buffered fiber, 25 pk
760184697	SFC-LCF-09-8A-25-PACK	QWIK II Connector, LC , OS2-APC, for use on 900µm buffered fiber, 25 pk
760242377	KIT - QWIK II	Tool Kit, for termination of Qwik II connectors
760242378	KIT - QWK II PREMIUM	Tool Kit, for termination of Qwik II connectors, Includes precision cleaver and VFL



ANAEROBIC FIBER OPTIC CONNECTORS AND TOOL KITS

Material ID	Product Number	Description
760034181	MFC-LCR-09	MM LC pre-radius connector for use on 900µm buffered fiber, single pack
760034199	SFC-LCR-09	SM LC pre-radius connector for use on 900µm buffered fiber, single pack
760007070	MFC-SCR-09	MM SC connector for use on 900µm buffered fiber, single pack
760007112	SFC-SCR-09	SM SC connector for use on 900µm buffered fiber, single pack
700005838	KIT-1032H TOOL P2020CC C	Anaerobic tool kit
760000810	EZ ADHESIVES KIT	Consumables Kit, Anaerobic
760053207	CONSUMABLE KIT	Cleaning Consumables Kit, Fiber Optic

FIBER BREAK-OUT KITS

Material ID	Description
760018820	6 Fiber Breakout kit, loose tube, 24 inch, indoor
760018838	12 Fiber Breakout kit, loose tube, 24 inch, indoor
108459488	2 x 12 Fiber Breakout Kit, outside plant, gel blocking



FIBER CABLE CLAMPS

Material ID	Product Number	Description
700025653	12A2 Clamp	Grounding Clamp Kit, non-metallic sheath cable
700025513	12A1 Clamp	Grounding Clamp Kit, metallic sheath cable

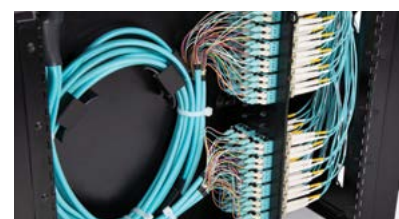


Campus Fiber Solutions



RACK MOUNT PANELS

Material ID	Product Number	Description
760231449	SD-1U	SD 1U sliding fiber panel, accepts (3) SD splice cassettes, MPO-LC modules, or adapter panels, providing up to 36 duplex LC ports or up to 24 MPO ports
760231456	SD-2U	SD 2U sliding fiber panel, accepts (6) SD splice cassettes, MPO-LC modules, or adapter panels, providing up to 72 duplex LC ports or up to 48 MPO ports
760231464	SD-4U	SD 4U sliding fiber panel, accepts (12) SD splice cassettes, MPO-LC modules, or adapter panels, providing up to 144 duplex LC ports or up to 96 MPO ports
760231472	SD-1U-FX	SD 1U fixed fiber panel, accepts (3) SD splice cassettes, MPO-LC modules, or adapter panels, providing up to 36 duplex LC ports or up to 24 MPO ports
760231480	SD-2U-FX	SD 2U fixed fiber panel, accepts (6) SD splice cassettes, MPO-LC modules, or adapter panels, providing up to 72 duplex LC ports or up to 48 MPO ports
760231498	SD-4U-FX	SD 4U fixed fiber panel, accepts (12) SD splice cassettes, MPO-LC modules, or adapter panels, providing up to 144 duplex LC ports or up to 96 MPO ports



WALL MOUNT PANELS

Material ID	Product Number	Description
760172288	WBE-EMT-BK/1P-PNL	Wall Mount Panel, 1 Position, black
760147496	WBE-EMT-BK/2P-PNL	Wall Mount Panel, 2 Position, black
760147504	WBE-EMT-BK/4P-PNL	Wall Mount Panel, 4 Position, black
760147512	WBE-EMT-BK/8P-PNL	Wall Mount Panel, 8 Position, black

Campus Fiber Solutions



SPLICE CASSETTES WITH PIGTAILS

Multimode		
Material ID	Product Number	Description
760221739	PNL-CS-12LCX-PT	Splicing cassette, 12 LC LazrSPEED OM4, 900µm, pigtail
760221697	PNL-CS-24LCX-PT	Splicing cassette, 24 LC LazrSPEED OM4, 900µm, pigtail
760221770	PNL-CS-12SCX-PT	Splicing cassette, 12 SC LazrSPEED OM4, 900µm, pigtail
760242108	PNL-CS-12LCV-PT	SD Splicing cassette 12LC OM5, 900µm, pigtail
760242109	PNL-CS-24LCV-PT	SD Splicing cassette 24 LC OM5, 900µm, pigtail
Singlemode		
760221747	PNL-CS-12LCW-PT	Splicing cassette, 12 LC TeraSPEED SM, 900µm, pigtail
760221705	PNL-CS-24LCW-PT	Splicing cassette, 24 LC TeraSPEED SM, 900µm, pigtail
760221788	PNL-CS-12SCW-PT	Splicing cassette, 12 SC TeraSPEED SM, 900µm, pigtail
760222596	PNL-CS-12LAW-PT	Splicing cassette, 12 LC/APC TeraSPEED, 900µm, pigtail
760222588	PNL-CS-24LAW-PT	Splicing cassette, 24 LC/APC TeraSPEED, 900µm, pigtail



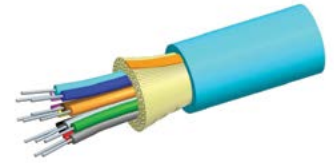
SPLICE CASSETTES WITHOUT PIGTAILS

Multimode		
Material ID	Product Number	Description
760236500	PNL-CS-12LCX	Splicing cassette, 12 LC LazrSPEED MM, no pigtail
760236503	PNL-CS-24LCX	Splicing cassette, 24 LC LazrSPEED MM, no pigtail
760236506	PNL-CS-12SCX	Splicing cassette, 12 SC LazrSPEED MM, no pigtail
Singlemode		
760236501	PNL-CS-12LCW	Splicing cassette, 12 LC TeraSPEED SM, no pigtail
760236504	PNL-CS-24LCW	Splicing cassette, 24 LC TeraSPEED SM, no pigtail
760236502	PNL-CS-12LAW	Splicing cassette, 12 LC/APC TeraSPEED SM, no pigtail
760236505	PNL-CS-24LAW	Splicing cassette, 24 LC/APC TeraSPEED SM, no pigtail
760236507	PNL-CS-12SCW	Splicing cassette, 12 SC TeraSPEED SM, no pigtail
760236508	PNL-CS-12SAW	Splicing cassette, 12 SC/APC TeraSPEED SM, no pigtail
760242110	PNL-CS-12LCV	SD Splicing cassette, 12LC OM5, no pigtail
760242111	PNL-CS-24LCV	SD Splicing cassette, 24LC OM5, no pigtail



ADAPTER PANELS FOR RACK MOUNT OR WALL MOUNT PANELS		
Singlemode LC		
760148361	PNL-BK-024-SFA-LC02-BL-NS	SM LC, 24 Fiber, Blue Duplex Adapter, black panel, no shutter
760148254	PNL-BK-012-SFA-LC12-BL	SM LC, 12 Fiber, Blue Ganged Adapter, black panel, no shutter
760147637	PNL-BK-012-AFA-LC12-GR	SM LC/APC, 12 Fiber, Green Ganged Adapter, black panel, no shutter
760150094	PNL-BK-024-AFA-LC02-GR-NS	SM LC/APC, 24 Fiber, Green Duplex Adapter, black panel, no shutter
Singlemode SC		
760027714	PNL-BK-012-SFA-SC02-BL	SM SC, 12 Fiber, Blue Duplex Adapter, black panel
760148213	PNL-BK-006-SFA-SC06-BL	SM SC, 6 Fiber, Blue Ganged Adapter, black panel
760148270	PNL-BK-006-SFA-SC01-BL	SM SC, 6 Fiber, Blue Simplex Adapter, black panel
760147652	PNL-BK-006-AFA-SC06-GR	SM SC/APC, 6 Fiber, Green Ganged Adapter, black panel
760117267	PNL-BK-012-AFA-SC02-GR	SM SC/APC, 12 Fiber, Green Duplex Adapter, black panel
Multimode		
Material ID	Product Number	Description
760148171	PNL-BK-024-MFA-LC02-AQ-NS	MM LC, 24 Fiber, Aqua Duplex Adapter, black panel, no shutter
760148056	PNL-BK-012-MFA-LC12-AQ	MM LC, 12 Fiber, Aqua Ganged Adapter, black panel, no shutter
760147975	PNL-BK-006-MFA-SC06-AQ	MM SC, 6 Fiber, Aqua Ganged Adapter, black panel, no shutter
760066076	PNL-BK-012-MFA-SC02-AQ	MM SC, 12 Fiber, Aqua Duplex Adapter, black panel, no shutter
760242424	PNL-BK-012-WFA-LC0-LG-NS	Wideband OM5 LC, 12 fiber, Lime Green Duplex Adapter, black panel, no shutter
760242423	PNL-BK-024-WFA-LC02-LG-NS	Wideband OM5 LC, 24 fiber, Lime Green Duplex Adapter, black panel, no shutter

Campus Fiber Solutions



Distribution cables are color coded 900um tight buffered fibers for easy connectorization. Fiber counts above 24 are unitized for manageability. All fiber types are bend insensitive. Single mode fiber is ITU-T G.657.A1 compliant, as well as backwards compatible to G.652.D.

ALL-DIELECTRIC (NON-ARMORED)								
Fiber Count	OM3		OM4		OM5		Singlemode	
	Material ID	Product Number	Material ID	Product Number	Material ID	Product Number	Material ID	Product Number
RISER								
6	700208143	R-006-DS-5L-FSUAQ	760012104	R-006-DS-5K-FSUAQ	760229724	R-006-DS-5G-FSULM	760004424	R-006-DS-8W-FSUYL
12	700208150	R-012-DS-5L-FSUAQ	760012112	R-012-DS-5K-FSUAQ	760229740	R-012-DS-5G-FSULM	760004440	R-012-DS-8W-FSUYL
24	760018556	R-024-DS-5L-FSUAQ	760018564	R-024-DS-5K-FSUAQ	760229765	R-024-DS-5G-FSULM	760018515	R-024-DS-8W-FSUYL
48	700208218	R-048-DS-5L-FMUAQ	760026849	R-048-DS-5K-FMUAQ	760229781	R-048-DS-5G-FMULM	760004473	R-048-DS-8W-FMUYL
PLENUM								
6	700009772	P-006-DS-5L-FSUAQ	760012138	P-006-DS-5K-FSUAQ	760229377	P-006-DS-5G-FSULM	760004333	P-006-DS-8W-FSUYL
12	700009731	P-012-DS-5L-FSUAQ	760006411	P-012-DS-5K-FSUAQ	760229393	P-012-DS-5G-FSULM	760004358	P-012-DS-8W-FSUYL
24	760018689	P-024-DS-5L-FSUAQ	760018697	P-024-DS-5K-FSUAQ	760229419	P-024-DS-5G-FSULM	760018630	P-024-DS-8W-FSUYL
48	760163022	P-048-DS-5L-FMUAQ	760024554	P-048-DS-5K-FMUAQ	760229435	P-048-DS-5G-FMULM	760004382	P-048-DS-8W-FMUYL



Interlocking armored Distribution cables utilize a protective aluminum interlocking armor over a standard Distribution Cable. An additional outer jacket provides a smooth surface for easier installation as well as cable identification.

INDOOR INTERLOCKING ARMORED								
Fiber Count	OM3		OM4		OM5		Singlemode	
	Material ID	Product Number	Material ID	Product Number	Material ID	Product Number	Material ID	Product Number
RISER								
6	760127175	R-006-DZ-5L-FSUAQ	760127506	R-006-DZ-5K-FSUAQ	760229856	R-006-DZ-5G-FSULM	760127308	R-006-DZ-8W-FSUYL
12	760127183	R-012-DZ-5L-FSUAQ	760127514	R-012-DZ-5K-FSUAQ	760229872	R-012-DZ-5G-FSULM	760127316	R-012-DZ-8W-FSUYL
24	760127381	R-024-DZ-5L-FSUAQ	760127407	R-024-DZ-5K-FSUAQ	760229898	R-024-DZ-5G-FSULM	760127373	R-024-DZ-8W-FSUYL
48	760127209	R-048-DZ-5L-FMUAQ	760126540	R-048-DZ-5K-FMUAQ	760229914	R-048-DZ-5G-FMULM	760127340	R-048-DZ-8W-FMUYL
PLENUM								
6	760127639	P-006-DZ-5L-FSUAQ	760128181	P-006-DZ-5K-FSUAQ	760229492	P-006-DZ-5G-FSULM	760127795	P-006-DZ-8W-FSUYL
12	760127647	P-012-DZ-5L-FSUAQ	760128017	P-012-DZ-5K-FSUAQ	760229518	P-012-DZ-5G-FSULM	760127803	P-012-DZ-8W-FSUYL
24	760127902	P-024-DZ-5L-FSUAQ	760127910	P-024-DZ-5K-FSUAQ	760229534	P-024-DZ-5G-FSULM	760127886	P-024-DZ-8W-FSUYL
48	760127670	P-048-DZ-5L-FMUAQ	760125971	P-048-DZ-5K-FMUAQ	760229559	P-048-DZ-5G-FMULM	760127837	P-048-DZ-8W-FMUYL

Campus Fiber Solutions



Indoor/outdoor cables are tough enough for outdoor use while also being listed for indoor use. Stranded Loose Tube I/O cables contain S-Z stranded gel-free buffer tubes with twelve 250um colored fibers per color coded tube.

INDOOR/OUTDOOR ALL-DIELECTRIC (NON-ARMORED)						
Fiber Count	OM3		OM4		Singlemode	
	Material ID	Product Number	Material ID	Product Number	Material ID	Product Number
RISER						
12	760136036	R-012-LN-5L-F12BK/25D	760101295	R-012-LN-5K-F12BK/25D	760086371	R-012-LN-8W-F12BK/25D
24	760086413	R-024-LN-5L-F12BK/25D	760101303	R-024-LN-5K-F12BK/25D	760086405	R-024-LN-8W-F12BK/25D
48	760136044	R-048-LN-5L-F12BK/25D	760228247	R-048-LN-5K-F12BK/25D	760086470	R-048-LN-8W-F12BK/25D
72	760130062	R-072-LN-5L-F12BK/25D	760101329	R-072-LN-5K-F12BK/25D	760086538	R-072-LN-8W-F12BK/25D
96	760130930	R-096-LN-5L-F12BK/25D	760242106	R-096-LN-5K-F12BK/25D	760086561	R-096-LN-8W-F12BK/25D
144	760136051	R-144-LN-5L-F12BK/25D	760139980	R-144-LN-5K-F12BK/25D	760086652	R-144-LN-8W-F12BK/25D



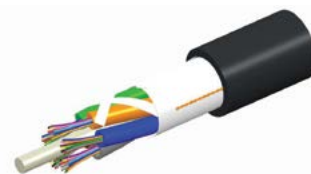
The outdoor cables are S-Z stranded gel-free loose tube cables with twelve 250um colored fibers per color coded buffer tube.

OUTDOOR ALL-DIELECTRIC (NON-ARMORED)						
Fiber Count	OM3		OM4		Singlemode	
	Material ID	Product Number	Material ID	Product Number	Material ID	Product Number
12	760054171	D-012-LN-5L-F12NS	760054288	D-012-LN-5K-F12NS	760053843	D-012-LN-8W-F12NS
24	760054189	D-024-LN-5L-F12NS	760054296	D-024-LN-5K-F12NS	760053850	D-024-LN-8W-F12NS
48	760054205	D-048-LN-5L-F12NS	760054312	D-048-LN-5K-F12NS	760053876	D-048-LN-8W-F12NS
72	760054221	D-072-LN-5L-F12NS	760054338	D-072-LN-5K-F12NS	760053892	D-072-LN-8W-F12NS



OUTDOOR ARMORED						
Fiber Count	OM3		OM4		Singlemode	
	Material ID	Product Number	Material ID	Product Number	Material ID	Product Number
12	760053629	D-012-LA-5L-F12NS	760053736	D-012-LA-5K-F12NS	760053280	D-012-LA-8W-F12NS
24	760053637	D-024-LA-5L-F12NS	760053744	D-024-LA-5K-F12NS	760053298	D-024-LA-8W-F12NS
48	760053652	D-048-LA-5L-F12NS	760053769	D-048-LA-5K-F12NS	760053314	D-048-LA-8W-F12NS
72	760053678	D-072-LA-5L-F12NS	760053785	D-072-LA-5K-F12NS	760053330	D-072-LA-8W-F12NS

Campus Fiber Solutions



Composite cables are useful when running different network speeds, i.e. data and building automation control/access control. Instead of running two cables with different fiber types, composite cables allow you to run one cable that contains multiple fiber types.

ALL-DIELECTRIC (NON-ARMORED)			
Fiber Count	Material ID	Product Number	Description
24	760175588	D-024-LN-CM-F12NS/8W012/5K012	Contains 12 Single Mode and 12 OM4 fibers
24	760141655	D-024-LN-CM-F12NS/8W012/5L012	Contains 12 Single Mode and 12 OM3 fibers
48	760166207	D-048-LN-CM-F12NS/8W024/5K024	Contains 24 Single Mode and 24 OM4 fibers
48	760140731	D-048-LN-CM-F12NS/8W024/5L024	Contains 24 Single Mode and 24 OM3 fibers
72	760229625	D-072-LN-CM-F12NS/8W036/5K036	Contains 36 Single Mode and 36 OM4 fibers
72	760161687	D-072-LN-CM-F12NS/8W036/5L036	Contains 36 Single Mode and 36 OM3 fibers



ARMORED			
Fiber Count	Material ID	Product Number	Description
24	760101360	D-024-LA-CM-F12NS/8W012/5K012	Contains 12 Single Mode and 12 OM4 fibers
24	760163741	D-024-LA-CM-F12NS/8W012/5L012	Contains 12 Single Mode and 12 OM3 fibers
48	760154633	D-048-LA-CM-F12NS/8W024/5K024	Contains 24 Single Mode and 24 OM4 fibers
48	760154690	D-048-LA-CM-F12NS/8W024/5L024	Contains 24 Single Mode and 24 OM3 fibers
72	760142752	D-072-LA-CM-F12NS/8W036/5K036	Contains 36 Single Mode and 36 OM4 fibers
72	760091066	D-072-LA-CM-F12NS/8W036/5L036	Contains 36 Single Mode and 36 OM3 fibers

NOTE: Other cable constructions available; contact your Customer Service Representative for more information.

Campus Fiber Solutions

Fiber Optic Pigtails Configurator



1	2	3	4	5	6	7	8	9	-	11	12	13	14	-	16
F	A	X	L	C	U	C	0	1	-	M	X	F	0	0	2

Prefix

1	FA	Pigtail tight buffer
2	FB	Pigtail - Riser SBJ

Fiber type

	X	LazrSPEED® 550 multimode
3	W	TeraSPEED® singlemode
	V	LazerSPEED® WB OM5

Connector 1

	LC	LC standard
4	LA	LC angled
5	SC	SC standard
	SA	SC angled

Connector 2

6	UC	Unconnectorized
7		

Cordage size

	0	0.9 mm (Tight buffered fiber)
8	1	0.9 mm (Reinforced Buffered Fiber)

Fiber count

	1	1 fiber
	A	6 fiber pigtail kit BL-WH (1-6)
9	B	6 fiber pigtail kit RD-AQ (7-12)
	C	12 fiber pigtail kit BL-AQ (1-12)

Jacket color

	A	Blue
	B	Orange
	C	Green
	D	Brown
	E	Slate
	G	Red
11	H	Black
	J	Yellow
	K	Violet
	L	Rose
	M	Aqua
	N	Lime Green
	X	KIT pigtail

Breakout length

12	X	No breakout
----	---	-------------

Unit of measurement

13	F	Feet
	M	Meter

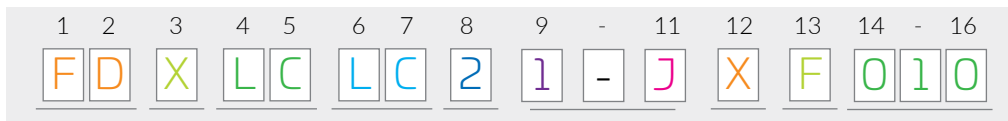
Length

14	1-23	Feet
-		
16	1-7	Meters

LC keyed fiber pigtails are also available as part of CommScope secure fiber solutions. More information is available [here](#).

Campus Fiber Solutions

Fiber Optic Patch Cord Configurator



Prefix

1	FD	Jumper - plenum
2	FE	Jumper - riser

Fiber type

	X	LazrSPEED® 550 multimode
3	W	TeraSPEED® singlemode
	V	LazrSPEED® WB OM5

Connector 1

	LC	LC standard
4	LA	LC angled
5	SC	SC standard
	SA	SC angled

Connector 2

	LC	LC standard
6	LA	LC angled
7	SC	SC standard
	SA	SC angled

Cordage size

	2	1.6 mm simplex
8	4	1.6 mm zipcord

Fiber count

	1	1 fiber
9	2	2 fiber

Jacket color

	J	Yellow
11	M	Aqua
	N	Lime Green

Breakout length

12	X	No breakout
----	---	-------------

Unit of measurement

	F	Feet
13	M	Meter

Length

14	2-999	Feet
-	1-999	Meters
16		

LC keyed fiber patchcords are also available as part of CommScope secure fiber solutions.

More information is available [here](#).

Note: OM5 jumpers are only available in LC to LC.

Campus Fiber Solutions

Uniboot Patch Cord Configurator



1	2	3	4	5	6	7	-	8	9	10	11	-	12
U	D	X	LU	LU	6	2	-	M	X	F	0	1	0

Construction Type

1	U	Ultra low-loss
---	---	----------------

Cable Family

2	D	Plenum
	F	LSZH/Riser

Fiber Type

3	G	TeraSPEED singlemode (A2)
	X	LazrSPEED 550 OM4 multimode
	V	LazrSPEED WB multimode (OM5)

Connector 1

4	LU	LC Uniboot
---	----	------------

Connector 2

5	LU	LC Uniboot
---	----	------------

Cordage Size

6	K	1.5mm
	6	2.0mm

Fiber Count

7	2	2 Fiber
---	---	---------

Color

8	M	Aqua
	N	Lime Green
	J	Yellow

LazrSPEED OM4 standard is Aqua
 LazrSPEED OM5 standard is Lime Green
 TeraSPEED singlemode standard is Yellow

Breakout

9	X	No Breakout
---	---	-------------

Unit of Measurement

10	F	Feet
	M	Meter

Length

11	2-200	Feet
12	1-061	Meter

Campus Fiber Solutions

Campus fiber networks include runs between buildings that often require splicing hardware beyond the fiber panel. These can include entrance cabinets for applications inside the building or enclosures for applications in the outside plant. CommScope offers a full portfolio of splicing hardware solutions including rack mount panels, entrance cabinets, and enclosures.

CommScope's splicing solutions accommodate both loose tube and ribbon fiber constructions. Both our Fiber Entrance Cabinets (FEC) and Fiber Optic Splice Enclosures (FOSEC) are offered in a variety of sizes accommodating a wide range of fiber counts. Both the FEC and the FOSEC feature superior cable access, intuitive cable routing, and ample slack storage. The FOSEC features industry renowned gel-sealing which keeps the inside of the enclosure dry, in the harshest environments, with the turn of the gel block trigger.



Fiber Entrance Cabinets (FEC)

Wall Mount Frames

DETERMINE THE CABINET CONFIGURATION THAT BEST SUITS YOUR APPLICATION

CATALOG NUMBER STANDARD DRAWER CONFIGURATION	CABINET SIZE		NO. OF DRAWERS INCLUDED WITH CABINET	WEIGHT	DIMENSIONS (HXWXD)
	STRANDED FIBERS	RIBBON FIBERS			
FEC-144	144	432	6	40 lbs (18.18 kg)	19.48" x 32" x 13" (49.47 x 81.28 x 33.02 cm)
FEC-288	288	864	12	80 lbs (36.3 kg)	28" x 32" x 13" (71.12 x 81.28 x 33.02 cm)
FEC-432RM	432	1,296	18	95 lbs (43.2 kg)	36" x 26" x 15" (91.44 x 66.04 x 38.1 cm)
FEC-576	576	1,728	24	120 lbs (54.4 kg)	45" x 32" x 13" (114.3 x 81.28 x 33.02 cm)
FEC-864	864	2,592	36	160 lbs (72.6 kg)	62" x 32" x 13" (157.48 x 81.28 x 33.02 cm)
FEC-10K *	864	10,368	36	160 lbs (72.6 kg)	62" x 32" x 13" (157.48 x 81.28 x 33.02 cm)



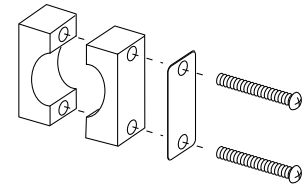
FEC-10K

* Reach out to your Field Applications Engineer for assistance in configuring this cabinet.

FEC Wall Mount Frame

Accessories

CABLE CLAMPING KIT	
CATALOG NUMBER	DESCRIPTION
	IFC/OSP cable clamp kit for wall mount configurations. Secure three cables to a single cable entry point on the cabinet. Clamp kits can be separated and used as single clamps.
OSP-CLPFEC-LG	Cables with a maximum diameter of 10 mm (0.4") to 30 mm (1.2")
OSP-CLPFEC	Cables with a maximum diameter of 5 mm (0.2") to 18 mm (0.7")
	Individual IFC/OSP cable clamp for wall mount configurations. Secure one cable to a single cable entry point on the cabinet.
OSP-CLPSST	Cables with a maximum diameter of 5 mm (0.2") to 18 mm (0.7")
	Individual IFC/OSP cable clamp for rack or wall mount configurations. Secure one cable to a single cable entry point on the cabinet.
FEC-ACCCLMP01	Cables with a maximum diameter of 10 mm (0.4") to 30 mm (1.2")
	Individual soft IFC only cable clamp for wall mount configurations. Secure one cable to a single cable entry point on the cabinet.
OSP-CLPSST-IFCL	Cables with a maximum diameter of 20 mm (0.8") to 28 mm (1.1")
OSP-CLPSST-IFCS	Cables with a maximum diameter of 5 mm (0.2") to 18 mm (0.7")
	OSP cable clamp kit for wall mount configurations of the FEC-10K only . Secure one cable to a single cable entry point on the cabinet (kit of 6).
OSP-CLPFEC-XL *	Cables with a maximum diameter of 32mm (1.25") to 38mm (1.5")



Individual IFC/OSP Cable Clamp
(OSP-CLPSST Shown)

* Cannot be used with other configurations

SPLICE TRAY

Standard-style FEC cabinets will accept two single trays or one dual tray per drawer.

CATALOG NUMBER			DESCRIPTION
Single Tray (12-position) 9 mm x 299 mm x 127 mm (0.3" x 11.75" x 5")	Dual Tray (24-position) 14 mm x 299 mm x 127 mm (0.5" x 11.75" x 5")	Splice Sleeve Protector	Standard Splice Trays
FST-MT	FST-D-MT	FST-ACC006	Mass fusion ribbon
FST-HS	FST-D-HS	FST-ACC001	Heat shrink (single fiber fusion)
FST-FT	FST-D-FT	FST-ACC001	Bare fiber
N/A	FOSC-ACC-C-TRAY-RIBN-24	SMOUV-1120-R2/12-02 **	24 Mass Fusion Splices (288 fibers total) *
*Only used in the FEC-10K			
**SMOUV-1120-01			Single fiber Heat Shrink Fusion Protective Sleeves, 100-pack
SMOUV-1120-R2/12-02			12-fiber Ribbon Heat Shrink Fusion Protective Sleeves, 50-pack

FOSC 450

Commonly Requested Closure Kits

FOSC 450 KITS		
Material ID	Product Number	Description
443162-000	FOSC450-A4-4-24-1-T1V	FOSC™ 450 A4 Fiber Optic Splice Closure, Gel Cable sealing, one pre-installed 24-splice tray, 4 cable attachment, tall, 1 ground feedthrough lug, with test valve
467054-000	FOSC450-B6-6-24-1-B3V	FOSC™ 450 B6 Fiber Optic Splice Closure, Gel Cable sealing, one pre-installed 24-splice tray, 6 cable attachment, three ground feedthrough, with test valve
HA967V-000	FOSC450-C6-6-24-1-C3V	FOSC™ 450 C6 Fiber Optic Splice Closure, Gel Cable sealing, one pre-installed 12-splice tray, 6 cable attachment, three ground feedthrough lugs, with test valve
C62943-000	FOSC450-D6-6-72-1-D3V	FOSC™ 450 D6 Fiber Optic Splice Closure, Gel Cable sealing, one pre-installed 72-splice tray, 6 cable attachment, three ground feedthrough lugs, with test valve

TRAY KITS		
Material ID	Product Number	Description
429567-000	FOSC-ACC-A-TRAY-24-KIT	FOSC™ Fiber Optic Splice Tray Kit for 24 fibers
863927-000	FOSC-ACC-B-TRAY-24-KIT	FOSC™ Fiber Optic Tray Kit
RH0202-000	FOSC-ACC-C-TRAY-24 -KIT	FOSC™ Fiber Optic Splice Tray, 24 fibers
915167-000	FOSC-ACC-D-TRAY-72-KIT	FOSC™ D Splice Tray, 6 splice modules, 72-splice capacity

RIBBON TRAY KITS		
Material ID	Product Number	Description
709972-000	FOSC-ACC-A/B-TRAY-12-RBN	FOSC™ Ribbon Fiber Tray
179767-000	FOSC-ACC-C-TRAY-RIBN-24	FOSC™ "C" Splice Tray, 288 fibers
061064-000	FOSC-ACC-D-TRAY-RIBN-24	FOSC™ Ribbon Tray Fiber Kit, D closure, 288 mass fusion capacity, 4 singlemode splice modules

SPLICE PROTECTORS		
Material ID	Product Number	Description
657054-000	SMOUV-1120-01	SMOUV Fiber Optic Splice Heat Shrink Protective Sleeves, single fiber, 100-pack
757849-000	SMOUV-1120-R2/12-02	SMOUV Fiber Optic Splice Heat Shrink Protective Sleeve for 12 ribbons, 50-pack

ACCESSORIES		
Material ID	Product Number	Description
41606V-000	FAK-MULDRP-45-4W-DRP	FOSC™ Gel Tape Wrap, all FOSC450 closures - 2 or 4 cable capacity, no cable attachments
C82508-000	FOSC-ACC-WALL/POLE-MOUNT	FOSC™ Pole/Wall Closure Mounting

Powered Fiber Cable System

CommScope's Powered Fiber Cable System simplifies the addition of new small cells, Wi-Fi access points and IP cameras by distributing power and fiber within the same cable. This allows network operators to locate remote devices anywhere they can run fiber cable. What's more, by providing the necessary DC power alongside optical fiber signals, the Powered Fiber Cable System allows networks to deliver low voltage power from a centralized source without the need of installing extra conduits, transformers or remote uninterruptible power supplies (UPS).

POWERED FIBER CABLE	
Description	Part Number
PFC, singlemode, 2F, I/O, 16AWG	PFC-S02L16
PFC, singlemode, 2F, outdoor, 12AWG	PFC-S02O12
PFC, singlemode, 4F, I/O, 12AWG	PFC-S04L12
PFC, singlemode, 4F, I/O, 16AWG	PFC-S04L16
PFC, singlemode, 4F, outdoor, 12AWG	PFC-S04O12
PFC, singlemode, 4F, outdoor, 16AWG	PFC-S04O16
PFC, OM3, 2F, I/O, 16AWG	PFC-302L16
PFC, OM3, 4F, outdoor, 12AWG	PFC-304O12
PFC, OM3, 4F, outdoor, 16AWG	PFC-304O16

POWER SUPPLIES	
Description	Part Number
Power Express Distribution shelf with alarm module	PFP-PX-S1
Power Express Distribution module supports max. 8 Devices	PFP-PX-8M
Power Express Blank Slot Panel	PFP-PX-SF
SPS Rectifier Power Distribution Shelf	PFP-SPS-S1
1600W SPS Power Rectifier module	PFP-SPS-1600M
SPS Rectifier Controller Display	PFP-SPS-C1
SPS Rectifier Blank Slot Panel	PFP-SPS-SF

PoE EXTENDERS	
Description	Part Number
2-port PoE extender	PFU-P-C-O-060-02
60W single port PoE Extender	PFU-P-C-O-060-01



Your customers expect you to have the answers.
You've got to hustle to keep up. CommScope has your back.



MyCommScope

My CommScope is the place to go for exclusive Partner training, resources and product information. First time users should visit www.commscope.com and click Log-in on the top right hand corner of the page. After entering your information, you will receive an email with your log-in credentials. Once you are logged in you have access to the following:

Partner-Customer Resources

We've created a spot for our Partners to go to retrieve important product information that isn't available to the public. The most important being the Product Discontinuation, EOL and Change Notifications. The information is organized by the month the announcement released.

Partner Sales and Enablement Training On-Demand

Looking for valuable Partner Training? The Partner Sales & Enablement Training On-Demand site is a must see! Visit for Tech-on-Demand training videos, recordings of our Design & Engineering Webinar series, access to Marketing tools via Brandfolder and much more!

Order Status/Pricing

You can request additional access to these tools from your My CommScope home page to check status on your orders using your purchase order number.



Resource library

The CommScope Resource Library offers a variety of tools on our website. Need info on standards, warranties or purchasing? Looking for an app, calculator or other tool? Interested in a document, video, webinar or training opportunity? You'll find it at www.commscope.com/Resources.



Blogs

The CommScope Blog is a space for the latest insights and opinions. Start by going to the CommScope Blogs page to check out the topics we're currently talking about. Already know what you're interested in? Subscribe today and let the learning begin. www.commscope.com/Blog

Run into a communications term or acronym you're not sure of? Click over to the CommScope Definitions Blog Series for the definition and background you need.



Product alerts and press releases

If you're looking specifically for breaking news and information regarding CommScope products, connect to our Product NewsFLASH feed and we'll keep you updated on all alerts and new product releases. www.commscope.com/Resources/Product-NewsFLASH

For the latest information about industry events, success stories and more, check out CommScope's Press Releases. www.commscope.com/NewsCenter



CommScope's YouTube channel

Visit our YouTube channel where you'll find how-to videos, customer success stories, and presentations of the latest CommScope solutions. www.youtube.com/user/commscope

Technical Support

Connectivity Solutions

1-800-830-5056

TAC.Americas@commscope.com

Distributed Coverage and Capacity Solutions

1-888-297-6433

wisupport@commscope.com

Active Wireless Products

1-800-255-1479

AWPNARsupport@commscope.com



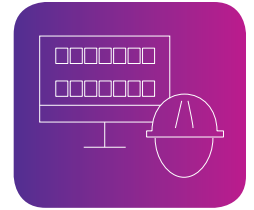
Support

In support of its extensive fiber optic solutions portfolio, CommScope provides an extensive list of services including:

PartnerPRO Network

The PartnerPRO Network matches customers who need help with the best solutions and the ideal partners. The network includes independent consultants, integrators, installers, distributors and industry alliances – all trained and certified to deliver CommScope’s broad range of network solutions with superior service.

<https://www.commscope.com/Partners/PartnerPRO-Network/>



CommScope Infrastructure Academy

The CommScope Infrastructure Academy offers a wide range of courses designed to keep our PartnerPRO network of installers current on the latest technologies for today’s fiber optic, wired and wireless technologies.

<https://www.commscopetraining.com/>



Fiber Applications Assurance

CommScope offers a suite of tools that simplify the design, deployment and ongoing expansion to support the implementation of fiber connectivity within buildings, campuses and data centers. Based on the applications listed in the CommScope Performance Specifications, detailed topology limits are provided, along with the CommScope guarantee that applications will perform accordingly.

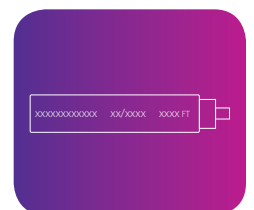
<https://www.commscope.com/assurance/>



WebTrak:

Unique performance tracking system which provides factory test data for cables by entering the serial number

<https://www.commscope.com/WebTrak/>



Web-based Applications:

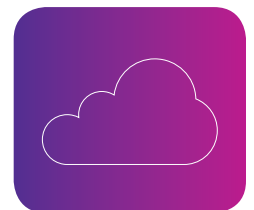
CommScope provides a broad range of web-based applications designed to simplify the implementation and ongoing operation of fiber optic networks. These include the following:

cCatalog™: Mobile version of online catalog, available on multiple device types printed on the outer sheath

cTrak™: Mobile version of WebTrak, available on multiple device types

cCalc™: mobile version of design tools including link loss calculator

<https://www.commscope.com/Resources/Apps/>



Warranty:

Complete warranty information

<https://www.commscope.com/Resources/Warranties>



CommScope pushes the boundaries of communications technology with game-changing ideas and ground-breaking discoveries that spark profound human achievement. We collaborate with our customers and partners to design, create and build the world's most advanced networks. It is our passion and commitment to identify the next opportunity and realize a better tomorrow. Discover more at commscope.com

COMMSCOPE®

commscope.com

Visit our website or contact your local CommScope representative for more information.

© 2018 CommScope, Inc. All rights reserved.

Unless otherwise noted, all trademarks identified by ® or ™ are registered trademarks, respectively, of CommScope, Inc. This document is for planning purposes only and is not intended to modify or supplement any specifications or warranties relating to CommScope products or services. CommScope is committed to the highest standards of business integrity and environmental sustainability with a number of CommScope's facilities across the globe certified in accordance with international standards, including ISO 9001, TL 9000, and ISO 14001. Further information regarding CommScope's commitment can be found at www.commscope.com/About-Us/Corporate-Responsibility-and-Sustainability.

CO-1129311-EN (01/19)