



ENTERPRISE NETWORK SOLUTIONS

www.4cablex.com | (800) 422-2539

 **Cable Exchange**
Data • Voice • Video

Cable Exchange Advantages

- Cable Exchange has built a solid foundation on our commitment to the customer.
- A commitment to supply best in class products when you need them.
- With ever decreasing turnaround times, today's IT users can't wait.
- We can meet those requirements by combining quality components and Cable Exchange's high volume production capacity.

FASTSHIP >>>> **IN STOCK**

FAST CONNECT >>>> **MADE TO ORDER**

US QUALITY >>>> **US PRODUCTION**

OPPORTUNITY >>>> **SUCCESS**

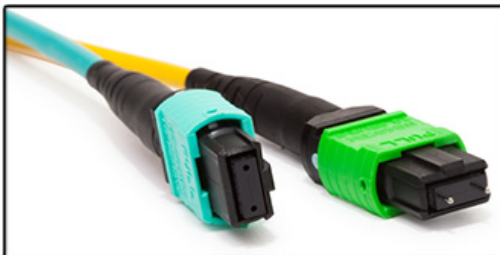
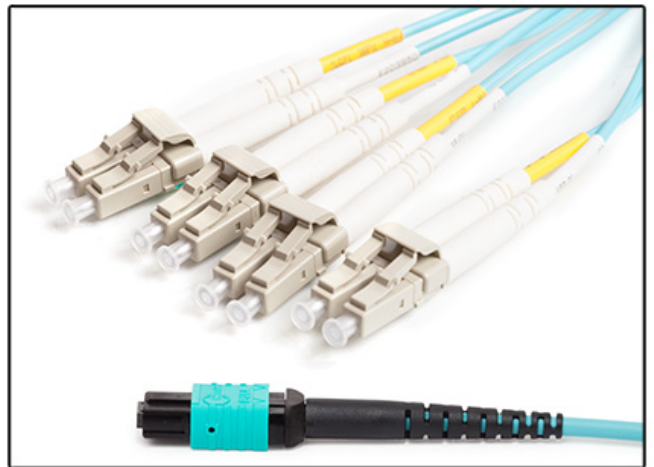
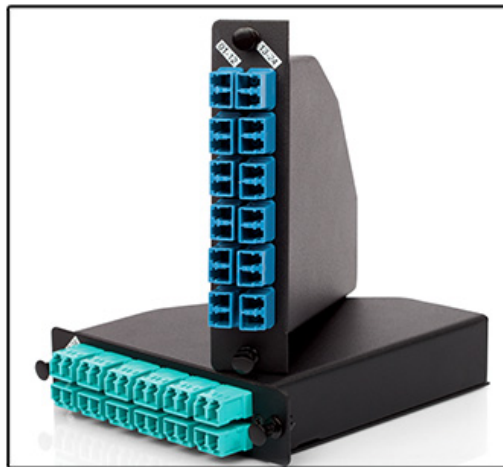
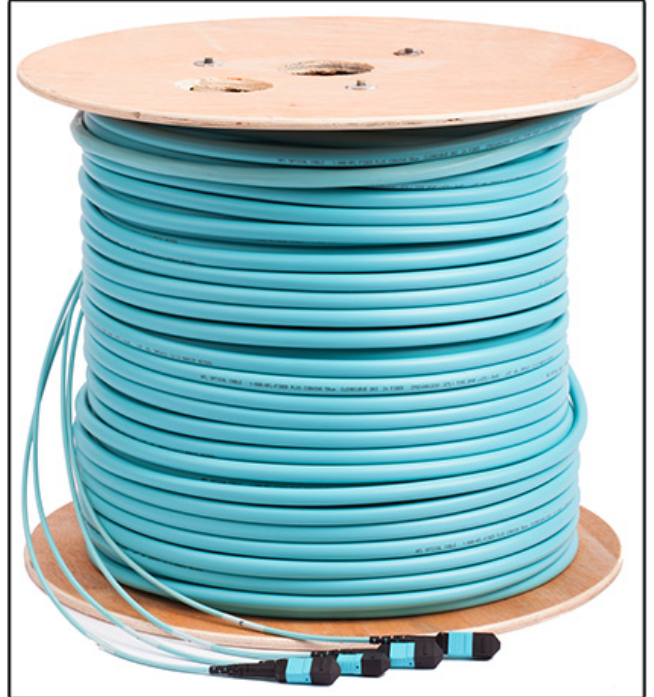
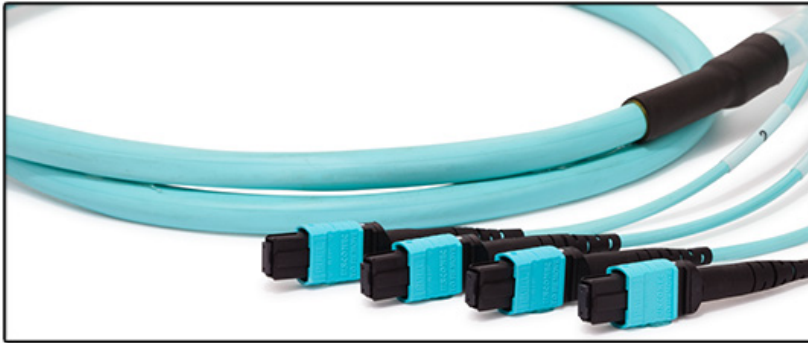
CEX >>>> **CUSTOMER SATISFACTION**

www.4cablex.com | (800) 422-2539

 **Cable Exchange**
Data • Voice • Video

Why CEX Fiber Assemblies?

Cable Exchange's MTP/MPO plug & play solution allows you to increase density and reduce installation costs. Replace up to 24 single connectors using our High Density MTP assemblies which are available in OM3, OM4 and single-mode. Utilizing our specially designed HD cassette you can deploy 144 connectors in a 1U enclosure. We also provide individual cassettes to fit our 1U, 2U and 4U enclosures.



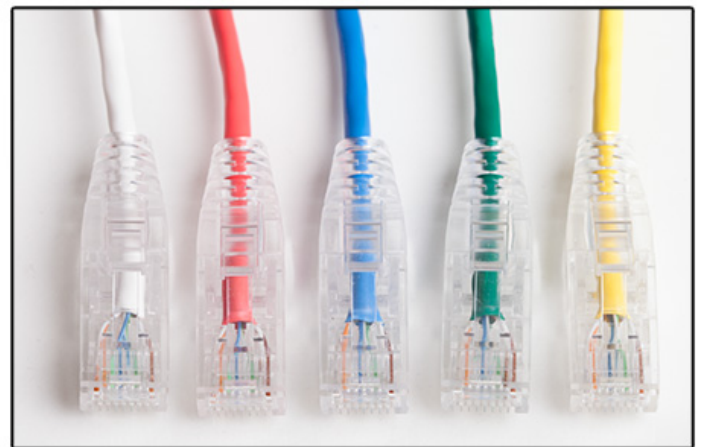
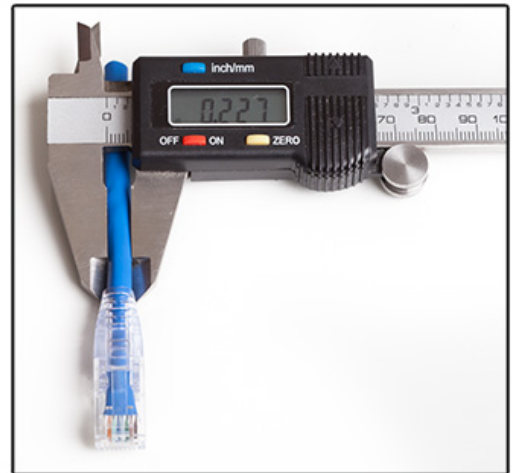
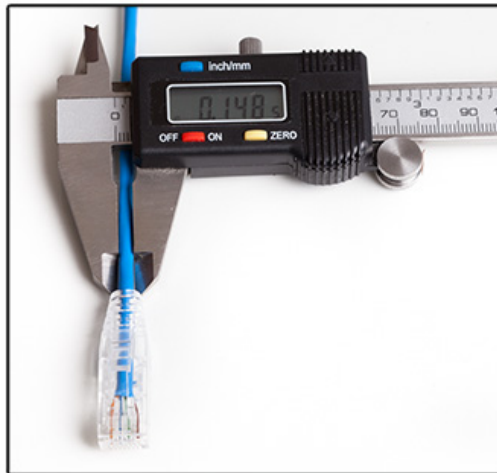
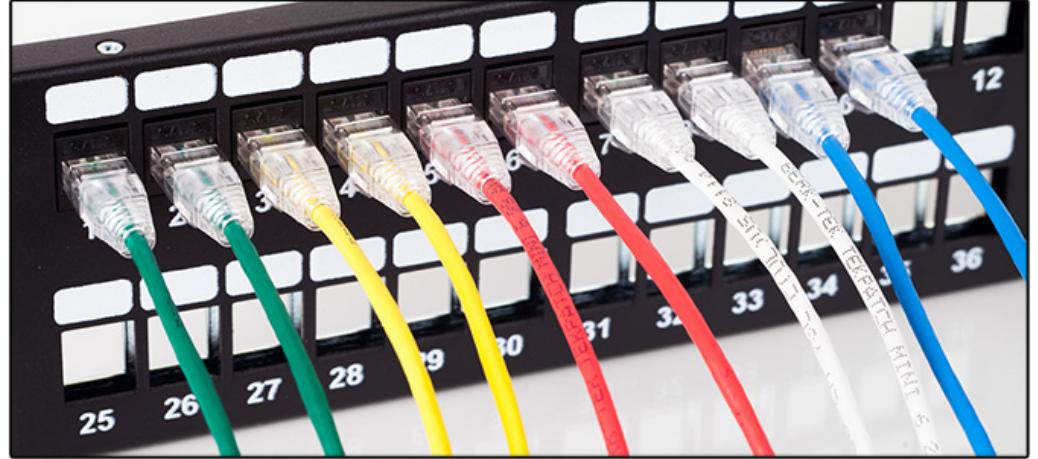
www.4cablex.com | (800) 422-2539

 Cable Exchange
Data • Voice • Video

Why CEX Copper Assemblies?

Cable Exchange's new high performance Ultra-thin solution is available with a 28 AWG reduced diameter profile engineered specifically for patching and top of rack applications in Category 6 systems.

This smaller more flexible design improves cable density and provides less cross sectional area to promote increased air flow to maximize rack ventilation. Our new Ultra-thin will meet or exceed Category 6 plug to plug electrical and transmission parameters up to 50 meters.



www.4cablex.com | (800) 422-2539

 Cable Exchange
Data • Voice • Video

Cable Exchange Quality

Cable ID: VCADY21-LEG#1

Date / Time: 04/26/2014 09:07:29 AM
 Headroom 6.0 dB (NEXT 12-36)
 Test Limit: TIA Cat 6 Perm. Link
 Cable Type: Cat 6 UTP
 Calibration Date: 11/06/2013

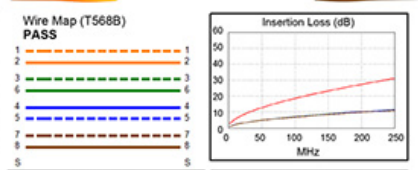
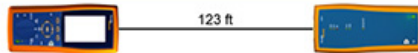
Operator: Your Name
 Software Version: 2.7400
 Limits Version: 1.9300
 NVP: 69.0%

Test Summary: PASS

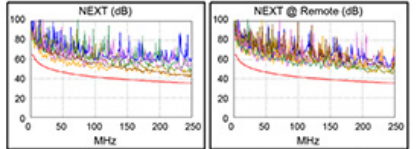
Model: DTX-1800
 Main S/N: 1664390
 Remote S/N: 1664391
 Main Adapter: DTX-PLA002
 Remote Adapter: DTX-PLA002

- 100% tested to meet or exceed industry standards
- Fluke DTX-1800, Certifiber, MPO testers
- Interferometers (Norland, DORC, Sumix)

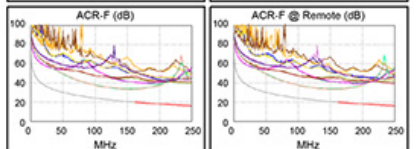
Length (ft), Limit 295	[Pair 78]	123
Prop. Delay (ns), Limit 498	[Pair 36]	190
Delay Skew (ns), Limit 44	[Pair 36]	8
Resistance (ohms)	[Pair 36]	5.7
Insertion Loss Margin (dB)	[Pair 36]	19.6
Frequency (MHz)	[Pair 36]	250.0
Limit (dB)	[Pair 36]	31.1



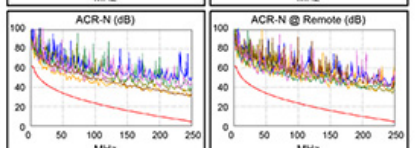
	MAIN	SR	MAIN	SR
PASS				
Worst Pair	12-36	45-78	12-36	36-78
NEXT (dB)	6.0	9.0	6.0	9.8
Freq. (MHz)	245.0	36.8	245.0	246.5
Limit (dB)	35.5	48.8	35.5	35.4
Worst Pair	36	36	36	36
PS NEXT (dB)	6.2	10.0	6.2	10.0
Freq. (MHz)	244.0	241.5	244.0	241.5
Limit (dB)	32.9	33.0	32.9	33.0



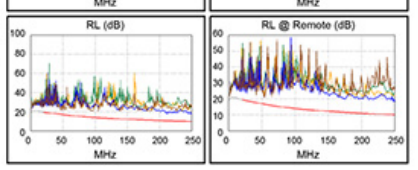
	MAIN	SR	MAIN	SR
PASS				
Worst Pair	45-78	78-45	45-78	78-45
ACR-F (dB)	12.3	12.2	13.2	13.1
Freq. (MHz)	130.5	124.5	155.5	155.5
Limit (dB)	21.9	22.3	20.4	20.4
Worst Pair	45	45	45	45
PS ACR-F (dB)	14.7	14.6	15.5	15.3
Freq. (MHz)	124.5	130.5	159.5	155.5
Limit (dB)	19.3	18.9	17.1	17.4



	MAIN	SR	MAIN	SR
N/A				
Worst Pair	12-36	12-36	12-36	36-78
ACR-N (dB)	12.1	12.5	25.4	29.6
Freq. (MHz)	5.5	5.4	245.0	246.5
Limit (dB)	57.8	58.0	4.7	4.6
Worst Pair	12	12	36	36
PS ACR-N (dB)	13.2	13.4	25.7	29.2
Freq. (MHz)	5.5	5.4	246.0	241.5
Limit (dB)	55.5	55.7	2.0	2.5



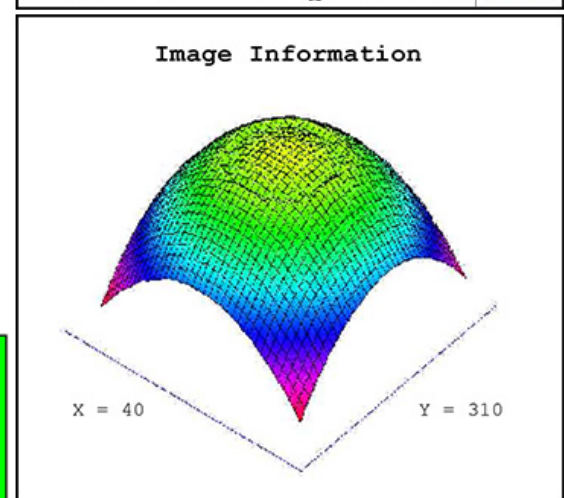
	MAIN	SR	MAIN	SR
PASS				
Worst Pair	78	78	45	45
RL (dB)	4.7	4.3	7.6	7.6
Freq. (MHz)	47.0	53.8	249.0	212.0
Limit (dB)	17.3	16.7	10.0	10.7



Compliant Network Standards:
 10BASE-T 100BASE-TX 100BASE-T4
 1000BASE-T ATM-25 ATM-51
 ATM-155 100VG-AnyLan ATM-51
 TR-16 Active TR-16 Passive TR-4



CC6000 ENDFACE QC REPORT **PASS**



Measurement Report

SampleID:	CON-2
Date & Time:	5/21/2014 15:36
Job Name:	test for brad
Assembly type:	Unknown
Customer:	brad
Technician:	Ivu
Company:	Sumix
Fitting regions:	L=2900µm; H=675µm; E=140µm; F=100µm; CumA=20%; Top=3%
Comments:	

PASS

Measurement parameter	Pass/Fail Limits			Measured Value	Pass or Fail
	Min	Max	Unit		
ROC X	2000	50000	mm	7884.80	N/A
ROC Y	50	10000	mm	144.81	N/A
Tilt X	-0.2	0.2	deg	0.017	PASS
Tilt Y	-0.2	0.2	deg	-0.072	PASS
Roughness (Rq)	0	200	nm	35.5	PASS
Roughness (Ra)	0	200	nm	29.0	PASS
Dome Height	-210	1000	nm	393	PASS

Heights	Limit		Measured Value	
	mm	mm	mm	mm
Max-Min	600		156	
Max Diff	300		104	
Max Adj Diff	300		100	
Total Coplanarity			162.1	mm
Minus Coplanarity			109.4	mm
DataFill			100	%

Measurement parameter	Pass/Fail Limits			Fiber Number / Measured Value / Pass or Fail											
	Min	Max	Unit	1	2	3	4	5	6	7	8	9	10	11	12
Height	1000	3000	nm	1620 P	1719 P	1738 P	1761 P	1755 P	1765 P	1775 P	1754 P	1738 P	1724 P	1703 P	1624 P
CoreDip	0	300	nm	12 P	20 P	19 P	11 P	15 P	14 P	15 P	19 P	12 P	14 P	18 P	15 P
Diff	-300	300	nm	-104 P	-4 P	15 P	38 P	32 P	42 P	52 P	31 P	15 P	1 P	-20 P	-99 P
Adj Diff	-300	300	nm	0 P	100 P	19 P	22 P	-6 P	11 P	10 P	-22 P	-16 P	-14 P	-21 P	-79 P
Tilt X	-0.500	0.500	deg	-0.024 P	-0.066 P	-0.090 P	-0.081 P	-0.051 P	-0.056 P	-0.053 P	-0.057 P	-0.100 P	-0.056 P	-0.094 P	-0.102 P
Tilt Y	-0.500	0.500	deg	-0.042 P	-0.053 P	-0.006 P	-0.016 P	-0.015 P	-0.008 P	-0.050 P	-0.047 P	-0.033 P	-0.033 P	-0.038 P	-0.051 P

www.4cablex.com | (800) 422-2539



Speed of Light Production

- Capacity to terminate over 12,000 single connectors per day
- MTP daily capacity exceeds 1,000 connectors per day
- Ability to rapidly deploy people & materials to handle a large volume of quick turn products (over 150 domestic production employees)
- Kiting and rack & stack available for data center projects
- We maintain a multi-million dollar inventory of finished goods (including trunks)

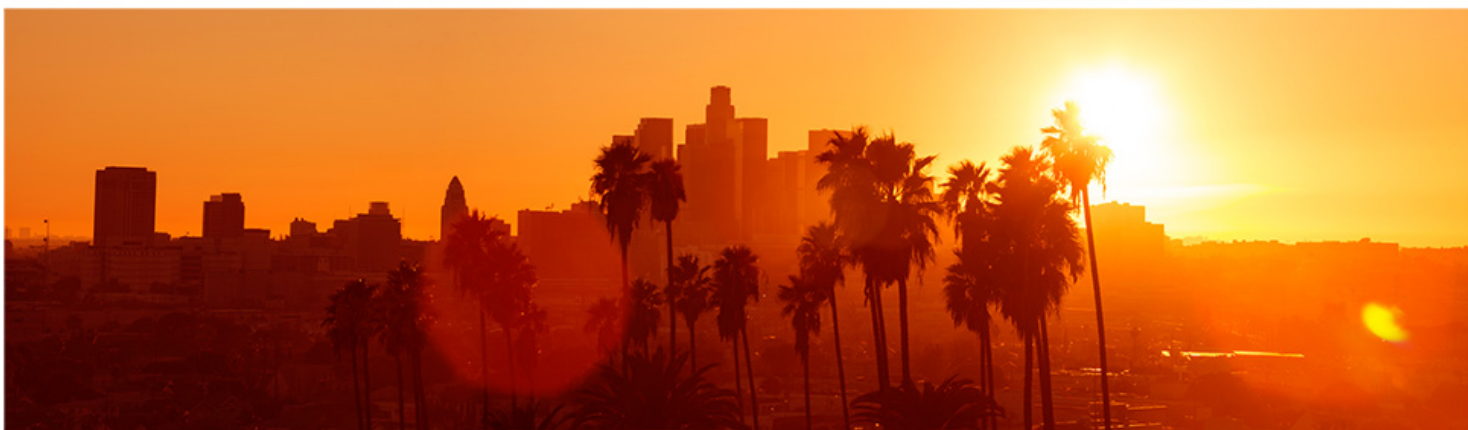


www.4cablex.com | (800) 422-2539

 **Cable Exchange**
Data • Voice • Video

CEX Fact Sheet

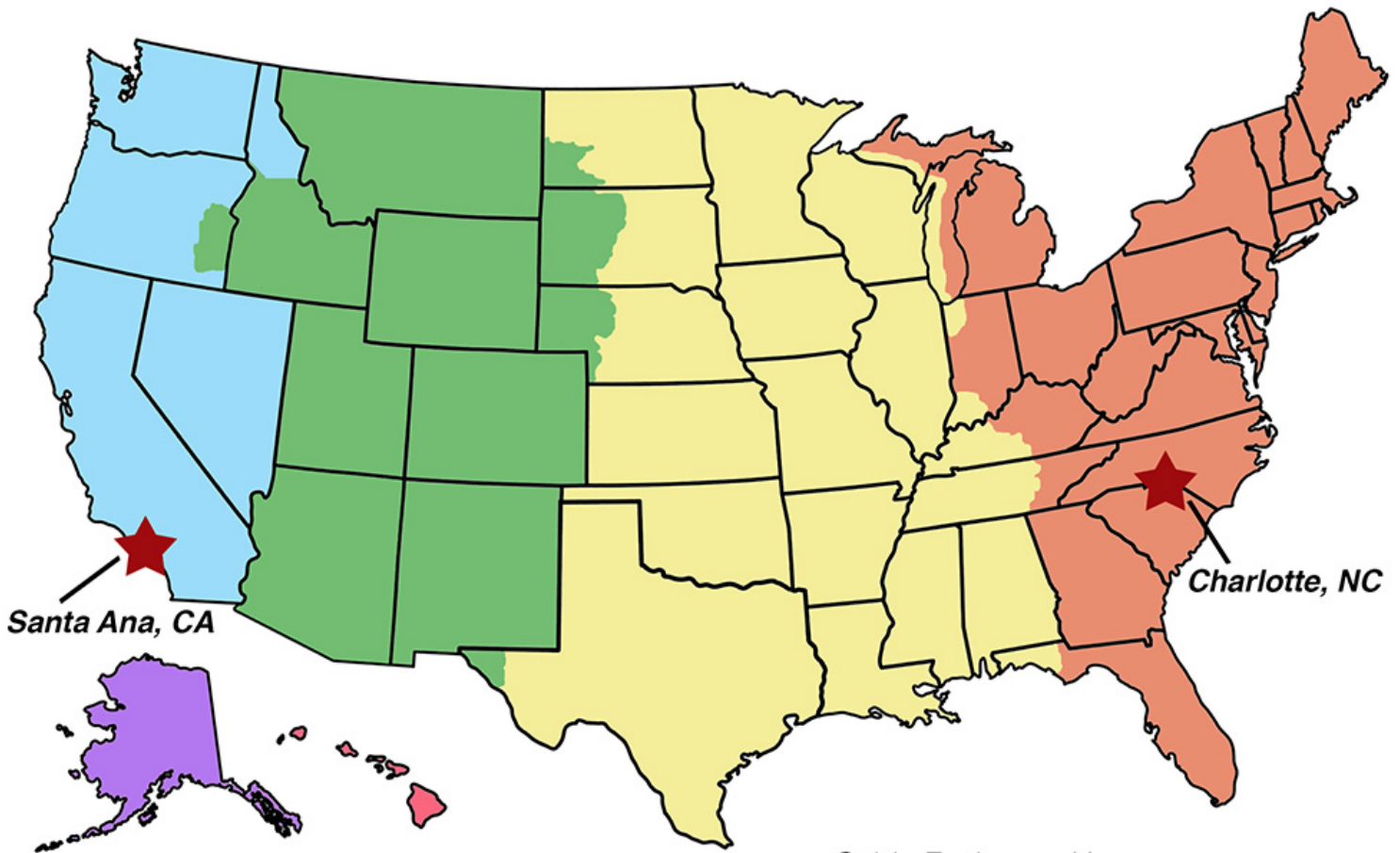
- 180 full time employees in the US
- Seasoned senior management
- Outstanding industry reputation
- UL & ETL certifications
- 51,000 square feet of production and warehouse space
- West Coast- Santa Ana, California
- East Coast- Charlotte, North Carolina



www.4cablex.com | (800) 422-2539

 **Cable Exchange**
Data • Voice • Video

Your Nationwide Source for Quick Turn Assemblies



Cable Exchange West
3008 S. Croddy Way
Santa Ana, CA 92704

Cable Exchange East
10736 Nations Ford Rd.
Charlotte, NC 28273

(800) 422-2539
www.4cablex.com
info@4cablex.com

Cable Exchange Hours:

PST: 5am-5pm

MST: 6am-6pm

CST: 7am-7pm

EST: 8am-8pm

Cable Exchange 
We jump through hoops
to deliver on **time!**