

Preferred Parts for Network Infrastructure



North America

PANDUIT

Network Infrastructure

Today's networks support ever-expanding converged applications for voice, data, and video, as well as functions such as intelligent lighting, security, safety systems, and more. Panduit® provides the industry's most comprehensive and holistic portfolio of products and services that enable sustainable, energy-efficient enterprises. Innovative design features provide easy installation, reduced maintenance costs, and improved network reliability and flexibility. This catalog features the preferred offering for both physical infrastructure and the intelligence to solve the most challenging business problems customers face as they connect multiple systems that span from the Enterprise to the Data Center and across the Manufacturing floor. For the complete offering, please contact your local Panduit representative or visit us at <http://www.panduit.com>.

Table of Contents

Copper Cable	3	Fiber Connectors	12
IndustrialNet™ Copper Cable	3	Fiber Optic Termination Tools	12
RJ45 Patch Cords	4	Cabinets and Thermal Management	13 – 14
IndustrialNet™ RJ45 Patch Cords	4	Racks	15
RJ45 Jack Module	4	Rack Accessories	15
IndustrialNet™ Connectors	5	Cable Managers	15
TX6A™ Category 6A UTP Field Term RJ45 Plug	5	Power Distribution Units (PDUs)	16 – 17
45° Angled Wire Caps for TX6A™, TX6™ PLUS and TX5e™	5	Industrial Network Uninterruptible Power Supply (UPS) ...	17
MiniCom® UTP Jack Modules	5	Wyr-Grid® Overhead Cable Tray Routing System	18
NetKey® Jack Modules	6	J-Pro™ Cable Support System	18
NetKey® Patch Cords	6	FiberRunner® 6x4 Cable Routing System	19
NetKey® Fiber Patch Cords and Pigtails	6	Faceplates (for use with MiniCom® Connectors)	20
NetKey® Faceplates and Adapters	7	IndustrialNet™ Data Access Port	20
NetKey® Patch Panels – Punchdown	7	Surface Mount Box	21
NetKey® Patch Panels – Modular	7	Surface Raceway	21
10Gig SFP+ Direct Attach Passive Copper Cable Assemblies ..	7	Zone Enclosures	22
Patch Panels, Kits and Accessories	8	Universal Network Zone Systems	22
Industrial Adapters and Patch Panels	8	Pre-Configured Network Zone Systems	23
HD Flex™ Fiber Cabling System	9	Pre-Configured Industrial Distribution Frame (IDF)	23
Fiber Enclosures	9	Grounding	24
Fiber Cassettes	9	Labeling	25
Adapter Modules and Fiber Adaptor Panels (FAPs)	10	Cable Ties and Bundling	26
Fiber Patch Cords and Pigtails	10	Stainless Steel Cable Ties	26
Fiber Patch Panels and Accessories	11	Cable Accessories	26
Fiber Optic Cable	11	Security Devices	27
Industrial DCF Fiber Optic Cable	12	Tools	27
Fiber Build Up Kits	12		

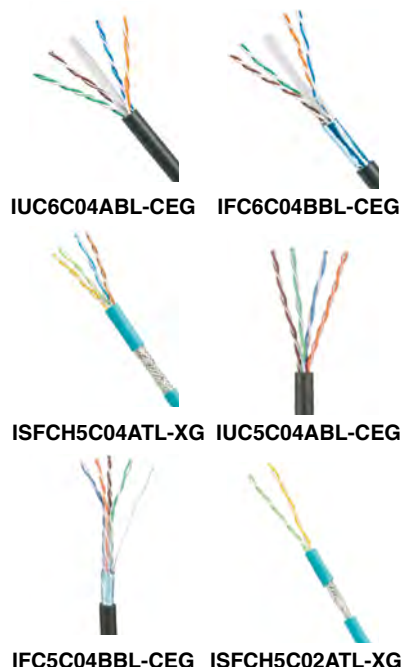
Copper Cable



Part Number	Description	Min. Order Qty. (MOQ)*	Min. Order Incrmt. (MOI)*	UOM
Category 6A (Unshielded)				
PUP6AV04BU-G	Premium Category 6A, 4-pair, 23 AWG, U/UTP, plenum (CMP), Blue.	9000	1000	Ft.
PUR6AV04BU-G	Premium Category 6A, 4-pair, 23 AWG, U/UTP, riser (CMR), Blue.	5000	1000	Ft.
PUP6004BU-W	Enhanced Category 6, 4-pair, 23 AWG, U/UTP, plenum (CMP), Blue.	12000	1000	Ft.
Category 6 (Unshielded)				
PUR6004BU-W	Enhanced Category 6, 4-pair, 23 AWG, U/UTP, riser (CMR), Blue.	12000	1000	Ft.
PUP6C04BU-U	Category 6, 4-pair, 23 AWG, U/UTP, plenum (CMP), Blue.	12000	1000	Ft.
PUR6C04BU-U	Category 6, 4-pair, 23 AWG, U/UTP, riser (CMR), Blue.	12000	1000	Ft.
PUP6C2804BU-U	Category 6, 4-pair, 28 AWG, U/UTP, plenum (CMP), Blue.	14000	1000	Ft.
PUR6C2804BU-U	Category 6, 4-pair, 28 AWG, U/UTP, riser (CMR), Blue.	14000	1000	Ft.
Category 5e (Unshielded)				
PUP5504BU-UY	Premium Category 5e, 4-pair, 24 AWG, U/UTP, plenum (CMP), Blue.	13000	1000	Ft.
PUR5504BU-UY	Premium Category 5e, 4-pair, 24 AWG, U/UTP, riser (CMR), Blue.	13000	1000	Ft.
Outdoor Plant (OSP)**				
Category 6				
PUO6C04BL-U	Category 6, 4-pair, 23 AWG, U/UTP, outside plant (OSP), Black.	9000	1000	Ft.
Category 6A				
PFO6X04BL-CEG	Category 6A, 4-pair, 23 AWG, F/UTP outside plant (OSP), Black.	12 rolls	12 rolls	Roll

*MOQ needs to be met prior to MOI. Contact Panduit Customer Service for additional information.
Additional colors available. Contact Panduit Customer Service for additional information or www.panduit.com.
** It is for duct and conduit installations only. It is not to be used in aerial or direct burial applications.

IndustrialNet™ Copper Cable



Part Number	Description	Min. Order Qty. (MOQ)*	Min. Order Incrmt. (MOI)*	UOM
ISFCH6X04ATLUG	Category 6A, 4-pair, 24 AWG stranded, SF/UTP, industrial 600V, (CMX), Teal.	10000	1000	Ft.
ISFCH6X04BTLUG	Category 6A, 4-pair, 26 AWG stranded, SF/UTP, industrial 600V, (CMX), Teal.	10000	1000	Ft.
ISX6X04ATL-LED	Category 6A, 4-pair, 24 AWG stranded, S/FTP, (PUR), Teal.	6	1	Roll
IUC6C04ABL-CEG	Category 6, 4-pair, 24 AWG stranded, U/UTP, flame-retardant (CM), Black.	6	1	Roll
IFC6C04BBL-CEG	Category 6, 4-pair, 26 AWG stranded, F/UTP, flame-retardant (CM), Black.	6	1	Roll
ISFCH5C04ATL-XG	Category 5e, 4-pair, 24 AWG stranded, SF/UTP, 600V high flex, flame-retardant (CM/CMX), Teal.	9000	1000	Ft.
IUC5C04ABL-CEG	Category 5e, 4-pair, 24 AWG stranded, U/UTP, flame-retardant (CM), Black.	6	1	Roll
IFC5C04BBL-CEG	Category 5e, 4-pair, 26 AWG stranded, F/UTP, flame-retardant (CM), Black.	6	1	Roll
ISFCH5C02ATL-XG	Category 5e, 2-pair, 24 AWG stranded, SF/UTP, 600V high flex, flame-retardant (CM/CMX), Teal.	9000	1000	Ft.
IFRH6C04BL-UG	Category 6, 4-pair, 23 AWG solid, F/UTP, industrial 600V, (CMR), Black.	5000	1000	Ft.
IFRH5C04BL-UG	Category 5e, 4-pair, 23 AWG solid, F/UTP, industrial 600V, (CMR), Black.	9000	1000	Ft.

*MOQ needs to be met prior to MOI. Contact Panduit Customer Service for additional information.
Additional colors available. Contact Panduit Customer Service for additional information or www.panduit.com.

RJ45 Patch Cords



UTP28X*



UTP28SP*



UTP6ASD*



UTPCH*

Part Number	Description	Std. Pkg. Qty.	Std. Ctn. Qty.
Category 6A 28 AWG			
UTP28X9	Category 6A 28 AWG UTP patch cord, Off White.	1	10
UTP28X10BU	Category 6A 28 AWG UTP patch cord, Blue.	1	10
Category 6A 26 AWG			
UTP6ASD7	Category 6A 26 AWG UTP patch cord, Off White.	1	10
UTP6ASD7BU	Category 6A 26 AWG UTP patch cord, Blue.	1	10
Category 6 28 AWG			
UTP28SP7	Category 6 28 AWG UTP patch cord, Off White.	1	10
UTP28SP7BU	Category 6 28 AWG UTP patch cord, Blue.	1	10
Category 6			
UTPSP7Y	Category 6 UTP patch cord, Off White.	1	10
UTPSP7BUY	Category 6 UTP patch cord, Blue.	1	10
Category 5e			
UTPCH5Y	Category 5e UTP patch cord, Off White.	1	10
UTPCH7BUY	Category 5e UTP patch cord, Blue.	1	10

Standard lengths include: 1, 3, 5, 7, 9, 10 and 14 feet.

Additional colors and lengths available. Contact Panduit Customer Service for additional information or www.panduit.com.

Bulk packaging available: Add -Q for pack of 25.

IndustrialNet™ RJ45 Patch Cords



ISTPHCH1MTL

Part Number	Description	Std. Pkg. Qty.	Std. Ctn. Qty.
ISTPHCH1MTL	Category 5e 600V 24 AWG stranded SF/UTP patch cord, RJ45 plug to RJ45 plug, 2 meter, Teal.	1	10

Standard lengths are from 0.3 meters to 40 meters. Contact Panduit Customer Service for additional colors and lengths.

RJ45 Jack Module



CJ6X88TGBL



CJ688TGBU

Part Number	Description	Std. Pkg. Qty.	Std. Ctn. Qty.
Unshielded			
CJ6X88TGBL	Category 6A RJ45 UTP Mini-Com® Jack, Black.	1	50
CJ6X88TGBU	Category 6A RJ45 UTP Mini-Com® Jack, Blue.	1	50
CJ6X88TGIW	Category 6A RJ45 UTP Mini-Com® Jack, International White.	1	50
CJ688TGBL	Category 6 RJ45 UTP Mini-Com® Jack, Black.	1	50
CJ688TGBU	Category 6 RJ45 UTP Mini-Com® Jack, Blue.	1	50
CJ688TGIW	Category 6 RJ45 UTP Mini-Com® Jack, International White.	1	50
CJ5E88TGBL	Category 5e RJ45 UTP Mini-Com® Jack, Black.	1	50
CJ5E88TGBU	Category 5e RJ45 UTP Mini-Com® Jack, Blue.	1	50
CJ5E88TGIW	Category 5e RJ45 UTP Mini-Com® Jack, International White.	1	50

Additional colors available. Contact Panduit Customer Service for additional information or www.panduit.com.

Bulk packages available: Add -24 for pack of 24 or -C for pack of 100.

IndustrialNet™ Connectors



Part Number	Description	Std. Pkg. Qty.	Std. Ctn. Qty.
Industrial Bulkhead Connector with Protective Cover			
IAEBH6X	Category 6A Variant 1 IP67 rated RJ45 connector, UTP.	1	10
IAEBH6XS	Category 6A Variant 1 IP67 rated RJ45 connector, STP.	1	10
IAEBH6	Category 6 Variant 1 IP67 rated RJ45 connector, UTP.	1	10
IAEBH6S	Category 6 Variant 1 IP67 rated RJ45 connector, STP.	1	10
IAEBH5E	Category 5e Variant 1 IP67 rated RJ45 connector, UTP.	1	10
IAEBH5ES	Category 5e Variant 1 IP67 rated RJ45 connector, STP.	1	10
MPI588T	Category 5e Variant 1 IP67 rated modular plug, UTP.	1	10
Industrial Bulkhead Coupler with Protective Cover			
IAEBHC6	Category 6 Variant 1 IP67 rated RJ45 coupler, UTP.	1	10
IAEBHC5E	Category 5e Variant 1 IP67 rated RJ45 coupler, UTP.	1	10
Industrial Mini-Com® Coupler Module			
IAEBHUSBAA	USB 2.0 Variant 1 IP67 rated female A to female A coupler, UTP.	1	10
Industrial RJ45 Plug			
ISPS688FA	Category 6A RJ45 plug for 24-22 AWG solid, 1.0-1.6mm conductor diameter, UTP and STP.	1	10
ISPS688FAS	Category 6A RJ45 plug for 24-22 AWG stranded, 0.85-1.00mm conductor diameter, UTP and STP.	1	10
Industrial M12 Connectors			
ISPS5E44MFA	Category 5e M12 D-Code STP field terminable connector, male.	1	25
ICAM12DRJS	Category 5e M12 D-Code to RJ45 industrial adapter, panel mount.	1	10
ICAM12XRJS	Category 6A M12 X-Code to RJ45 industrial adapter, straight, panel mount.	1	15
ICAM12X90RJS	Category 6A M12 X-Code to RJ45 industrial adapter, angled, panel mount.	1	15
ISPS6A88MFA	Category 6A M12 X-Code STP field terminable connector, male.	1	10

TX6A™ Category 6A UTP Field Term RJ45 Plug



Part Number	Description	Std. Pkg. Qty.	Std. Ctn. Qty.
Standard			
FP6X88MTG	TX6A™ Category 6A UTP Field Term RJ45 Plug.	1	50
FP6X88MTG-X	TX6A™ Category 6A UTP Field Term RJ45 Plug, package of ten.	10	100
Angled			
FPUD6X88MTG	TX6A™ Category 6A UTP Angled Field Term RJ45 plug.	1	50
FPUD6X88MTG-X	TX6A™ Category 6A UTP Angled Field Term RJ45 plug, package of ten.	10	100
FP6X88TC	TX6A™ Field Term RJ45 Plug Test Cord, Red, 1 meter.	1	1

45° Angled Wire Caps for TX6A™, TX6™ PLUS and TX5e™ Mini-Com® UTP Jack Modules



Part Number	Description	Std. Pkg. Qty.	Std. Ctn. Qty.
Left/Right			
CJLRCAPBU-C	Category 6A 45° angled left/right TG wire cap, package of 100.	100	500
CJLRCAPIW-C	Category 6 45° angled left/right TG wire cap, package of 100.	100	500
CJLRCAPRD-C	Category 5e 45° angled left/right TG wire cap, package of 100.	100	500
Up/Down			
CJUDCAPBU-C	Category 6A 45° angled up/down TG wire cap, package of 100.	100	500
CJUDCAPIW-C	Category 6 45° angled up/down TG wire cap, package of 100.	100	500
CJUDCAPRD-C	Category 5e 45° angled up/down TG wire cap, package of 100.	100	500
CPUDCAPBL-X	Category 6A 45° angled up/down wire cap for use with TX6A Category 6A UTP Field Term Angled Field Term, package of ten.	10	100

Note: 45° Angled Wire Caps available in packs of 10. Change -C to -X.

NetKey® Jack Modules



Part Number	Description	Std. Pkg. Qty.	Std. Ctn. Qty.
NK6X88MBU	Category 6A, 8-position, keystone punchdown jack, Blue.	1	50
NK688MBU	Category 6, 8-position, keystone punchdown jack, Blue.	1	50
NKP5E88MBU	Category 5e, 8-position, keystone punchdown jack, Blue.	1	50

Additional colors available. Contact Panduit Customer Service for additional information or www.panduit.com. Bulk packages of 25 available; add: -Q to end of part number.

NetKey® Patch Cords



Part Number	Description	Std. Pkg. Qty.	Std. Ctn. Qty.
NK6APC7BU	Category 6A UTP patch cord, 7 ft. Blue.	1	10
NK6PC7BUY	Category 6 UTP patch cord, 7 ft. Blue.	1	10
NK5EPC7Y	Category 5e UTP patch cord, 7 ft. White.	1	10

Additional colors available. Contact Panduit Customer Service for additional information or www.panduit.com. Standard lengths include 3, 5, 7, and 10ft. Contact Panduit Customer Service for additional colors and lengths.

NetKey® Fiber Patch Cords and Pigtails



Part Number	Description	Std. Pkg. Qty.	Std. Ctn. Qty.
Patch Cords			
NKFPX2ERLLSM001	2-fiber OM3 LC duplex to LC duplex patch cord, riser (OFNR) rated with 1.6mm jacket.	1	50
NKFP92ERLLSM001	2-fiber OS2 LC duplex to LC duplex patch cord, riser (OFNR) rated with 1.6mm jacket.	1	50
Pigtails			
NKFPX1BN1NNM001	1-fiber OM3 LC pigtail with 900µm buffered fiber.	1	50
NKFP91BN1NNM001	1-fiber OS2 LC to pigtail with 900µm buffered fiber.	1	50

NetKey® Faceplates and Adapters



Part Number	Description	Std. Pkg. Qty.	Std. Ctn. Qty.
NK4FNIW	Single gang faceplate, 4-port, Off White.	1	10
NK4FIWY	Single gang faceplate with labels, 4-port, Off White.	1	10
NK4HSFIWY	Single gang sloped horizontal faceplate with labels, 4-port, Off White.	1	10
NK4VSFIW	Single gang sloped vertical faceplate with labels, 4-port, Off White.	1	10

NetKey® Patch Panels – Punchdown



Part Number	Description	Std. Pkg. Qty.	Std. Ctn. Qty.
NK6PPG24Y	24-port patch panel, flat.	1	10
NKA6PPG24Y	24-port patch panel, angled.	1	10
NK6PPG48Y	48-port patch panel, flat.	1	10
NKA6PPG48Y	48-port patch panel, angled.	1	10

NetKey® Patch Panels – Modular



Part Number	Description	Std. Pkg. Qty.	Std. Ctn. Qty.
NKPP24FMY	Flush mount modular patch panel, 24-port, 1 RU.	1	10
NKPP48FMY	Flush mount modular patch panel, 48-port, 2 RU.	1	10
NKPPA48FMY	Flush mount angled modular patch panel, 48-port, 2 RU.	1	10
NKFP24Y	Modular faceplate patch panel, 24-port, 2 RU.	1	10
NKFP48Y	Modular faceplate patch panel, 48-port, 2 RU.	1	10
NKPPA48HDY	Modular high density angled patch panel, 48-port, 2 RU.	1	10

10Gig SFP+ Direct Attach Passive Copper Cable Assemblies



PSF1PXA*MBL

Part Number	Description	Std. Pkg. Qty.	Std. Ctn. Qty.
PSF1PXA1.5MBL	SFP+ 10Gig Direct Attach Passive Copper Cable Assembly, 1.5m, Black.	1	10
PSF1PXA2MBL	SFP+ 10Gig Direct Attach Passive Copper Cable Assembly, 2m, Black.	1	10
PSF1PXA3MBL	SFP+ 10Gig Direct Attach Passive Copper Cable Assembly, 3m, Black.	1	10

*Direct Attach Passive Cable Assemblies shown in BL (Black). Other colors available: WH (White), BU (Blue), RD (Red), GR (Green), or OR (Orange). Available in 0.5m length increments from 0.5m to 7m.

Patch Panels, Kits, and Accessories



CPP24FMWBL



CPP48HDWBL



CPPA48HDWBL



DP48688TGY



QAPP24BL



QAPP48HDBL



QPPBBL



SRB19BLY



SRBBRKT

Part Number	Description	Std. Pkg. Qty.	Std. Ctn. Qty.
-------------	-------------	----------------	----------------

Modular Patch Panels (Fit All Mini-Com® Connectors)

CPP24FMWBL	24-port patch panel, flush mount.	1	10
CPPA24FMWBL	24-port angled patch panel, flush mount.	1	10
CPPLA48WBL	48-port angled patch panel with labels, with six CFFPL4 faceplates.	1	10
CPPA48FMWBL	48-port angled patch panel, flush mount.	1	10
CPP48HDWBL	48-port, high density patch panel, 1 RU.	1	10
CPPA48HDWBL	48-port, high density angled patch panel, 1 RU.	1	10

Data-Patch™ Patch Panels

DP246X88TGY	24-port, flat, 1 RU, Category 6A RJ45 UTP Data-Patch™ Patch Panel, Black.	1	10
DP486X88TGY	48-port, flat, 2 RU, Category 6A RJ45 UTP Data-Patch™ Patch Panel, Black.	1	10
DP24688TGY	24-port, flat, 1 RU, Category 6 RJ45 UTP Data-Patch™ Patch Panel, Black.	1	10
DP48688TGY	48-port, flat, 2 RU, Category 6 RJ45 UTP Data-Patch™ Patch Panel, Black.	1	10
DP245E88TGY	24-port, flat, 1 RU, Category 5e RJ45 UTP Data-Patch™ Patch Panel, Black.	1	10
DP485E88TGY	48-port, flat, 2 RU, Category 5e RJ45 UTP Data-Patch™ Patch Panel, Black.	1	10

QuickNet™ Patch Panels

QAPP24BL	Angled 24-port patch panel accepts QuickNet™ Pre-Terminated Cassettes and Patch Panel Adapters (1 RU).	1	10
QAPP48HDBL	Angled 48-port patch panel accepts QuickNet™ Pre-Terminated Cassettes and Patch Panel Adapters (1 RU).	1	10
QAPP48HDVNSBL	Angled 48-port patch panel, with pre-printed vertical numbering on each port, accepts QuickNet™ Pre-Terminated Cassettes and Patch Panel Adapters (1 RU).	1	10
QPP48HDBL	Flat 48-port patch panel which accepts QuickNet™ Pre-Terminated Cassettes and Patch Panel Adapters (1 RU).	1	10
QSP48HDBL	Flat 48-port shielded all metal patch panel which accepts QuickNet™ Pre-Terminated Cassettes and Patch Panel Adapters (1 RU).	1	10

QuickNet™ Accessories

QPPABL	Patch panel adapter accepts all Mini-Com® Modules for multimedia applications.	1	10
QPPBBL	Patch panel blank reserves space for future use and promotes proper air flow and cooling.	1	10

Strain Relief

SRB19BLY	Strain relief bar.	1	10
SRBBRKT	Quick release bracket kit for strain relief bars.	1	10
SRB19D5BL	Deep strain relief bar, extends 5".	1	10
SRB19D7BL	Deep strain relief bar, extends 7".	1	10

Industrial Adapters and Patch Panels



CADIN1IG



CDPP8RG

FDME8RG

Part Number	Description	Std. Pkg. Qty.	Std. Ctn. Qty.
-------------	-------------	----------------	----------------

Mini-Com® DIN Rail Mount Adapter

CADIN1IG	Single-port DIN rail mount adapter, International Gray.	1	10
CADIN1BL	Single-port DIN rail mount adapter, Black.	1	10

IndustrialNet™ DIN Rail Mount Copper Patch Panel

CDPP8RG	8-port patch panel, DIN rail mount.	1	10
---------	-------------------------------------	---	----

IndustrialNet™ DIN Rail Mount Fiber Enclosure

FDME8RG	8-port fiber optic enclosure, DIN rail mount.	1	10
---------	---	---	----

HD Flex™ Fiber Cabling System



FLEX1UPN06



FHCXO-12-10AS

Part Number	Description	Std. Pkg. Qty.	Std. Ctn. Qty.
HD Flex™ Enclosures			
FLEX1U06	HD Flex™ Fiber Enclosure, 1 RU, Black.	1	—
FLEX4U06	HD Flex™ Fiber Enclosure, 1 RU, Black.	1	—
HD Flex™ Patch Panels			
FLEX1UPN06	1 RU 6-port HD Flex™ Patch Panel.	1	—
FLEX4UPN06	4 RU 6-port HD Flex™ Patch Panel.	1	—
HD Flex™ Fiber Optic Cassettes and Adapters			
FHC9N-12-10AS	OS2 HD Flex™ Cassette with 1 MPO to 6 duplex LC, standard loss with Method A.	1	10
FHCXO-12-10AS	OM3 HD Flex™ Cassette with 1 MPO to 6 duplex LC, optimized loss with Method A.	1	10
FHCXO-12-10AF	OM3 HD Flex™ Cassette with 1 MPO to 6 duplex LC, optimized loss with modified Method A – pair flipped.	1	10
FHCZA-12-10AS	OM4 HD Flex™ Cassette with 1 MPO to 6 duplex LC, ultra low loss with Method A Polarity.	1	10

Fiber Enclosures



FRME1



FCE1U

Part Number	Description	Std. Pkg. Qty.	Std. Ctn. Qty.
FRME1	1 RU rack mount fiber enclosure, Black, 2 spool, sliding tray, 3 FAPs/cassettes, front access.	1	—
FRME4	4 RU rack mount fiber enclosure, 2 spool, sliding tray, 12 FAPs/cassettes, front access.	1	—
FRME1U	1 RU rack mount fiber enclosure, 2 spool, sliding tray, 3 FAPs/cassettes/FOSM, front/rear access.	1	—
FCE1U	1 RU rack mount fiber enclosure, up to 4 cassettes/FAPs/FOSM.	1	—
FWME2	Wall mount fiber enclosure, up to 2 cassettes/FAPs/FSM.	1	—
FAPB	Blank fiber adapter panel, reserves space for future use.	1	—

Fiber Cassettes



FQ9N-12-10AS



FC29N-24-10AS

Part Number	Description	Std. Pkg. Qty.	Std. Ctn. Qty.
FQ9N-12-10AS	12-fiber, SFQ cassette, OS1/OS2 9/125µm, standard loss, duplex LC to MTP; method A.	1	10
FQZO-12-10AS	12-fiber QuickNet™ SFQ Cassette, optimized OM4 (50/125µm), six LC duplex adapters to MTP.	1	10
FQXO-12-10AS	12-fiber QuickNet™ SFQ Cassette, six LC duplex adapters to MTP.	1	10
FQZO-12-10B2	12-fiber OM3 SFQ cassette optimized IL duplex LC to MTP method B end 2.	1	10
FC2XO-24-10AS	OM3 50/125µm twelve LC duplex adapters to two male 12-fiber pre-terminated MTP.	1	10
FQZO-12-10AF	12-fiber QuickNet™ SFQ Cassette, optimized OM4 (50/125µm), six LC duplex adapters to MTP.	1	10
FQXO-12-10AF	12-fiber QuickNet™ SFQ Cassette, six LC duplex adapters to MTP.	1	10
FC2ZN-24-10AS	OM4 24-fiber total, standard loss, LC duplex adapter (color and split sleeve dictated by fiber type), standard method A.	1	10

For OM3/OM4 cassettes, change "N" to "O" for optimized performance and for flipped, change "AS" to "AF". See fiber patch panels and accessories on page 11.

Adapter Modules and Fiber Adaptor Panels (FAPs)



CMDAQSCZBL



FAP12WAQDLCZ



FQMAP65BL

Part Number	Description	Std. Pkg. Qty.	Std. Ctn. Qty.
Fiber Adapter Modules			
CMDSAQLCZBL	OM3/OM4 duplex LC Sr./Sr. Mini-Com® Module Adapter Aqua/Black, zirconia ceramic split sleeve.	1	10
CMDSAQLCBL	OM3/OM4 duplex LC Sr./Sr. Mini-Com® Module Adapter Aqua/Black, phosphor bronze split sleeve.	1	10
CMDSLCZBU	Duplex LC fiber adapter (Blue) with module (Blue) zirconia.	1	10
CMDBUSCBL	Module supplied with one SC duplex fiber optic adapter with phosphor bronze split sleeves, Black.	1	10
Fiber Adapter Panels (FAP)			
FAP12WAQDLCZ	OM3/OM4 FAP loaded with twelve LC duplex multimode fiber optic adapters (Aqua) with zirconia ceramic split sleeves.	1	10
FAP12WBUDLCZ	LC OS1/OS2 FAP loaded with twelve LC duplex singlemode fiber optic adapters (Blue) with zirconia ceramic split sleeves.	1	10
FAP6WBUDLCZ	LC OS1/OS2 FAP loaded with six LC duplex singlemode fiber optic adapters (Blue) with zirconia ceramic split sleeves.	1	10
FAP6WBUDSCZ	SC OS1/OS2 FAP loaded with six LC duplex singlemode fiber optic adapters (Blue) with zirconia ceramic split sleeves.	1	10
FAP6WAQDLCZ	LC 10Gig™ OM3/OM4 FAP loaded with six LC 10Gig™ Duplex Multimode Fiber Optic Adapters (Aqua) with zirconia ceramic split sleeves.	1	10
QuickNet™ SFQ Series MPO Fiber Adapter Panel (FAP)			
FQMAP65BL	QuickNet™ Fiber Optic Migration Adapter Panel – 6 MPO key-up/key-down adapters.	1	10

Fiber Patch Cords and Pigtaills



F92ERLNLNSNM***



FX2ERLNLNSNM***



F91BN1NNNSNM001

Part Number	Description	Std. Pkg. Qty.	Std. Ctn. Qty.
Patch Cords			
F92ERLNLNSNM002	OS2 2 fiber 1.6mm jacket patch cord riser LC duplex to LC duplex Std IL – 2m.	1	10
F92ERLNLNSNM003	OS2 2 fiber 1.6mm jacket patch cord riser LC duplex to LC duplex Std IL – 3m.	1	10
FX2ERLNLNSNM002	OM3 2 fiber 1.6mm jacket patch cord riser LC duplex to LC duplex Std IL – 2m.	1	10
FX2ERLNLNSNM003	OM3 2 fiber 1.6mm jacket patch cord riser LC duplex to LC duplex Std IL – 3m.	1	10
Pigtails			
F91BN1NNNSNM001	OS2 1-fiber, 900µm buffered, patch cord, with no jacket, LC to pigtail, Std. IL – 1m.	1	10
F91BN1NNNSNM002	OS2 1-fiber, 900µm buffered, patch cord, with no jacket, LC to pigtail, Std. IL – 2m.	1	10
F91BN1NNNSNM003	OS2 1-fiber, 900µm buffered, patch cord, with no jacket, LC to pigtail, Std. IL – 3m.	1	10
F91BN3NNNSNM001	OS2 1-fiber, 900µm buffered, patch cord, with no jacket, SC to pigtail, Std. IL – 1m.	1	10

Length in meters. 1, 2, 3, 5, and 10 meter lengths. Contact Panduit Customer Service for additional lengths.

Fiber Patch Panels and Accessories



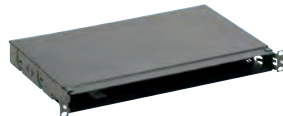
QAPP48HDBL



QPPBBL



FQCRCM



FMT1



FOSMF

Part Number	Description	Std. Pkg. Qty.	Std. Ctn. Qty.
QuickNet™ Patch Panels			
QAPP24BL	Angled 24-port patch panel which accepts QuickNet™ Pre-Terminated Cassettes and Patch Panel Adapters (1 RU).	1	10
QAPP48HDBL	Angled 48-port patch panel which accepts QuickNet™ Pre-Terminated Cassettes and Patch Panel Adapters (1 RU).	1	10
QPPBBL	Patch panel blank reserves space for future use and promotes proper airflow and cooling.	1	10
QuickNet™ Cassette Cable Manager and Patch Field Protection Cover			
FQCRCM	QuickNet™ Cassette Rear Cable Manager.	1	10
Opticom® Trays and Drawers			
FMT1	1 RU rack mount fiber tray, holds up to four QuickNet™ Cassettes, FAPs, and FMP adapter panels.	1	—
Opticom® QuickNet™ Splice Modules			
FOSMF	Fiber optic splice module 24 fusion for rack mount enclosure.	1	10

Fiber Optic Cable



FODPX24Y



FOCRX12Y



FOKPX12

Part Number	Description	UOM	MOQ*
Distribution Cable			
FODPX12Y	12-fiber OM3 multimode OFNP (plenum) rated distribution cable.	Ft.	—
FODPX24Y	24-fiber OM3 multimode OFNP (plenum) rated distribution cable.	Ft.	—
Interlocking Armor Distribution			
FOPPX12Y	12 fiber OM3 multimode OFCP (plenum) rated distribution cable with interlocking armor.	Ft.	—
FSPP924Y	24 fiber OS2 singlemode OFCP (plenum) rated distribution cable with interlocking armor.	Ft.	—
Indoor/Outdoor Central Tube Cable			
FOCRZ12Y	12-fiber OM4 ONFR (riser) rated indoor/outdoor central tube cable.	Ft.	—
FOCRX12Y	12-fiber OM3 ONFR (riser) rated indoor/outdoor central tube cable.	Ft.	—
FSCR912Y	12-fiber OS2 singlemode ONFR (riser) rated indoor/outdoor central tube cable.	Ft.	—
Indoor/Outdoor Tight-buffered Cable			
FOKPZ12	12-fiber OM4 multimode OFNP (plenum) rated, indoor/outdoor tight buffered cable	Ft.	—
FOKPX12	12-fiber OM3 multimode OFNP (plenum) rated, indoor/outdoor tight buffered cable.	Ft.	—
FSKP912	12-fiber OS2 singlemode OFNP (plenum) rated, indoor/outdoor tight buffered cable.	Ft.	—

*See Panduit's Safety Stock Program for a full list of in-stock fiber cables.

Industrial DCF Fiber Optic Cable



Part Number	Description	UOM	MOQ
FOADZ08	8-fiber OM4 multimode OFNR (riser) rated indoor DCF cable.	Ft.	1000
FSAD508	8-fiber OM2 multimode OFNR (riser) rated indoor DCF cable.	Ft.	1000
FSAD608	8-fiber OM1 multimode OFNR (riser) rated indoor DCF cable.	Ft.	1000
FSAD908	8-fiber OS2 singlemode OFNR (riser) rated indoor DCF cable.	Ft.	1000

Additional colors and fiber counts available. Contact Panduit Customer Service for additional information or www.panduit.com.

Fiber Build Up Kits



FO12CB

Part Number	Description	Std. Pkg. Qty.	Std. Ctn. Qty.
Fiber Build Up Kits			
FO12CB	Build up 250µm fiber to 900µm loose buffered coating size; for twelve fibers.	1	1
FO6CB	Build up 250µm fiber to 900µm loose buffered coating size; for six fibers.	1	1

Fiber Connectors



FLCSMCXAQY



FSC2SCBU

Part Number	Description	Std. Pkg. Qty.	Std. Ctn. Qty.
OptiCam™ Pre-Polished Connectors			
FLCDMCXAQY	LC duplex 50µm OM3/OM4 connector for 900µm, Aqua boot.	1	10
FLCSMCXAQY	LC simplex 50µm OM3/OM4 connector for 900µm, Aqua boot.	1	10
FLCSSCBUY	LC simplex 9µm OS2 singlemode connector for 900µm, Blue boot.	1	10
FLCDSCBUY	LC duplex 9µm OS2 singlemode connector for 900µm, Blue boot.	1	10
FSC2MCXAQ	SC2 simplex 50µm OM3/OM4 connector for 900µm, Aqua boot .	1	10
FSC2SCBU	SC2 simplex 9µm OS2 singlemode connector for 900µm, Blue boot.	1	10

Fiber Optic Termination Tools



FOCTT2-BKIT



FOCTT2-PKIT

Part Number	Description	Std. Pkg. Qty.	Std. Ctn. Qty.
FOCTT2-KIT	Includes: batteries, case, launch cords and one cradle for each OptiCam® LC, SC2 and ST2 Connector.	1	1
FOCTT2-BKIT	Includes: batteries, case, launch cords and one cradle for each OptiCam® LC, SC2 and ST2 Connector, Fitel cleaver, installation tools, cleaning and consumables.		
FOCTT2-PKIT	Includes: batteries, case, launch cords and one cradle for each OptiCam® LC, SC2 and ST2 Connector, Sumitomo Cleaver, installation tools, cleaning and consumables.		

Cabinets and Thermal Management



D-Type Cabinets



**D12FBB
D15FBB**



S-Type Cabinets



SPDUBRK

Part Number	Description	Std. Pkg. Qty.	Std. Ctn. Qty.
Net-Verse™ Cabinets			
DN6212B	Net-Verse™ D-Type Cabinet Frame, 42 RU. Top panel with brush openings. Two sets cage nut equipment rails. Single hinge perforated front door. Split perforated rear doors. Horizontally split side panels (4). Two full length PDU brackets. Dimensions: 80.5in H x 23.6in W x 39.4in D (2045mm x 600mm x 1000mm). Color: Black.	1	—
DN6222B	Net-Verse™ D-Type Cabinet Frame, 42 RU. Top panel with brush openings. Two sets cage nut equipment rails. Single hinge perforated front door. Split perforated rear doors. Horizontally split side panels (4). Two full length PDU brackets. Dimensions: 80.5in H x 23.6in W x 47.2in D (2045mm x 600mm x 1200mm). Color: Black.	1	—
DN8222B	Net-Verse™ D-Type Cabinet Frame, 42 RU. Top panel with brush openings. Two sets cage nut equipment rails. Single hinge perforated front door. Split perforated rear doors. Horizontally split side panels (4). Two full length PDU brackets. Dimensions: 80.5in H x 31.5in W x 47.2in D (2045mm x 800mm x 1200mm). Color: Black.	1	—
DN8212B	Net-Verse™ D-Type Cabinet Frame, 42 RU. Top panel with brush openings. Two sets cage nut equipment rails. Single hinge perforated front door. Split perforated rear doors. Horizontally split side panels (4). Two full length PDU brackets. Dimensions: 80.5in H x 31.5in W x 39.4in D (2045mm x 800mm x 1000mm). Color: Black.	1	—
Net-Verse™ Cabinet Accessories			
D12FBB	Finger bracket kit, attaches to rails on 800W 42 RU Net-Verse™ Cabinets, Black.	1	—
D15FBB	Finger Bracket Kit, attaches to rails on 800W 45 RU Net-Verse™ Cabinets, Black.	1	—
D2ERB	42 RU cage nut equipment rails for Net-Verse™ D-Type Cabinets, Black, sold in pairs.	1	—
Net-Access™ S-Type Cabinets			
S7222B	Net-Access™ S-Type Cabinet frame with top panel. Single hinge perforated front door. Split perforated rear doors open in the middle to minimize door swing footprint. Solid side panels (2), casters, POU brackets (1 set), cage nut rails (2 sets). Dimensions: 79.8in H x 27.6in W x 48.0in D (2026mm x 700mm x 1200mm). Color: Black.	1	—
S8512BF	Net-Access™ S-Type Cabinet Frame with top panel. Single hinge perforated front door. Split perforated rear doors open in the middle to minimize door swing footprint. Solid side panels (2), casters, POU brackets (1 set), cage nut rails (2 sets). Cable Management Fingers (1 set). Dimensions: 85.0in H x 31.5in W x 42.0in D (2160mm x 800mm x 1070mm). Color: Black.	1	—
Net-Access™ N-Type Cabinet Accessories			
SN25F	Finger kit, 150mm (5.9) depth that attaches to posts on 42 RU through 48 RU cabinets. Color: Black.	1	—
SPDUBRK	PDU brackets, sold in pairs. Color: Black.	1	—

(continued on page 14)

Cabinets and Thermal Management (continued)



N-Type Cabinets



CDE2



DIFBA2002S00S



CTGN3X5



TLBP1R-V



**MDC79D
MDC79**

Part Number	Description	Std. Pkg. Qty.	Std. Ctn. Qty.
Net-Access™ N-Type Cabinets			
N8512BT	Net-Access™ N-Type Cabinet Frame with integrated top of cabinet cable pathway. Tapped #12-24 rails. Dual hinge perforated front door opens to the left or right. Split perforated rear doors open in the middle to minimize door swing footprint. Solid side panels (2). Two sets of #12-24 tapped equipment mounting rails. 45 RU cable management on front and rear of front posts. Dimensions: 84.0H x 31.5W x 42.0D (2134mm x 800mm x 1070mm). Color: Black, two sets of SN25F fingers included.	1	—
N8522B	Net-Access™ N-Type Cabinet Frame with top panel. Tapped equipment rails (12-24). Dual hinge perforated front door opens to the left or right. Split perforated rear doors open in the middle to minimize door swing footprint. Solid side panels (2). Two sets of #12-24 threaded equipment mounting rails. 45 RU cable management on front and rear of front posts. Dimensions: 84.0in H x 31.5in W x 48.0in D (2134mm x 800mm x 1200mm). Color: Black, two sets of SN25F fingers included.	1	—
Air Inlet Ducting and Air Sealing Accessories			
CDE2	Net-Direct™ Air Inlet Duct provides cold airflow directly into Cisco Nexus N2K-C2148T-1GE, N2K-C2248TP-1GE, and N2K-C2232PP-10GE fabric extenders and Cisco WS-C4948E-F, WS-C4948E-F-S, and WS-C4948E-F-E switch intakes from in-line. Optimized for use in server cabinets, 2 RU, Black, 1pc – no blanking panels.	1	—
DIFBA2002S00S	The Net-Direct™ Air Inlet Duct provides cold airflow directly into Cisco Nexus 9396 switch intakes from in-line. 2 RU, Black, 1pc – no blanking panels	1	—
CTGN3X5	Cool Boot® Cabinet Top Air Sealing Fitting for 3.5" x 5" Net-Access™ Cabinet opening.	1	—
CTGN6X6	Cool Boot® Cabinet Top Air Sealing Fitting for 6.5" x 6.5" Net-Access™ Cabinet opening.	1	—
TLBP1R-V	Tool-less blanking panel, 1 rack unit, round hole.	1	—
TLBP1S-V	Tool-less blanking panel, 1 rack unit, square hole.	1	—
FLBSIM-51	Blanking shade for 4 – 51 consecutive rack units on 19.00" std. rails, Black.	1	—
Pre-Configured Micro Data Center (MDC)			
MDC79D	Single hinge perforated front door, split perforated rear doors, split side panels (2), 42 RU, network cabling, patch panels, cable management, grounding, casters, shock pallet and ramp. Color Black. Dimensions: 79.8" H x 27.6" W x 48.0" D (2026mm x 700mm x 1200mm).	1	—
MDC79	Single hinge perforated front door, split perforated rear doors, split side panels (2), 42 RU, network cabling, patch panels, cable management, grounding and casters. Color Black. Dimensions: 79.8" H x 27.6" W x 48.0" D (2026mm x 700mm x 1200mm).	1	—

Racks



R2P

Part Number	Description	Std. Pkg. Qty.	Std. Ctn. Qty.
Racks			
R2P	2 post rack, 45 RU, with #12-24 threaded rails, RU spaces numbered bottom up.	1	1
R4P	4 post rack, 45 RU, 30" deep, with #12-24 threaded rails, RU spaces numbered bottom up, adjustable front and rear rails.	1	1
R4PCN	4 post rack, 45 RU, 30" deep, with cage nut rails, RU spaces numbered bottom up, adjustable front and rear rails.	1	—

Rack Accessories



RSHLF

Part Number	Description	Std. Pkg. Qty.	Std. Ctn. Qty.
RSHLF	1 RU 19"W x 30"D 4 post rack vented shelf, adjustable mounting along the depth of the shelf.	1	—
SRM19FM1	1 RU 19"W x 15"D 2 post rack front mount shelf.	1	—
DPFP1	1 RU 19"W horizontal rack filler panel.	1	10

Cable Managers



WMPVHC45E



PR2VD12



WMPSE



NMF2

Part Number	Description	Std. Pkg. Qty.	Std. Ctn. Qty.
Vertical Managers			
WMPV45E	NetRunner™ Vertical Cable Manager, front and rear, 45 RU, 4"W x 5"D front and rear channels, includes covers.	1	—
WMPVF45E	NetRunner™ Vertical Cable Manager, front only, 45 RU, 4"W x 5"D channel, includes covers.	1	—
WMPVHC45E	NetRunner™ Vertical Cable Manager, front and rear, 45 RU, 6"W x 6"D front and rear channels, includes covers.	1	—
PR2VD06	PatchRunner™ 2 Vertical Cable Manager, front and rear, 45 RU, 6"W x 20.7"D, includes two metal dual-hinged doors.	1	—
PR2VFD06	PatchRunner™ 2 Vertical Cable Manager, front only, 45 RU, 6"W x 20.7"D, includes one metal dual-hinged door.	1	—
PR2VD08	PatchRunner™ 2 Vertical Cable Manager, front and rear, 45 RU, 8"W x 20.7"D, includes two metal dual-hinged doors.	1	—
PR2VD12	PatchRunner™ 2 Vertical Cable Manager, front and rear, 45 RU, 12"W x 20.7"D, includes two metal dual-hinged doors.	1	—
Horizontal Managers			
WMPSE	PatchLink™ Horizontal Cable Manager with hinged cover, front and rear, 1 RU.	1	—
WMPFSE	PatchLink™ Horizontal Cable Manager with hinged cover, front only, 1 RU.	1	—
WMP1E	PatchLink™ Horizontal Cable Manager with hinged cover, front and rear, 2 RU.	1	—
WMPF1E	PatchLink™ Horizontal Cable Manager with hinged cover, front only, 2 RU.	1	—
NM2	NetManager™ High Capacity Horizontal Cable Manager with hinged cover, front and rear, 2 RU.	1	—
NMF2	NetManager™ High Capacity Horizontal Cable Manager with hinged cover, front only, 2 RU.	1	—

Power Distribution Units (PDUs)

SmartZone™ G5 Basic Power Distribution Units (PDUs)

Part Number	Form Factor	Input Current Per Phase	Input Phase	Input Plug Type	Outlet Count	Outlet Type	Output Voltage	Length (In.)	Width (In.)	Depth (In.)
-------------	-------------	-------------------------	-------------	-----------------	--------------	-------------	----------------	--------------	-------------	-------------

Basic Power Distribution Units (PDUs)

P12B01M	1U	15	1	NEMA 5-15P	12	(12)5-20R	120	1.6	17.5	2.0
P12B47M	1U	30	1	NEMA L6-30P	12	(12)C13	208	1.7	17.5	7.8
P36B26M	0U MID	30	3	NEMA L21-30P	36	(30)C13, (6)C19	208	58.7	2.0	2.1
P24B14M	0U FULL	60	3	IEC 60309 3P+E 9h 60A	24	(12)C13, (12)C19	208	68.9	2.0	2.1



P12B01M

SmartZone™ G5 Intelligent Power Distribution Units (PDUs)

Part Number	Form Factor	Input Current Per Phase	Input Phase	Input Plug Type	Outlet Count	Outlet Type	Output Voltage	Length (In.)	Width (In.)	Depth (In.)
-------------	-------------	-------------------------	-------------	-----------------	--------------	-------------	----------------	--------------	-------------	-------------

Monitored Input (MI) Power Distribution Units (PDUs)

P24D24M	0U MID	20	1	NEMA L6-20P	24	(20)C13, (4)C19	208	58.7	2.0	2.1
P38D28M	0U FULL	30	3	NEMA L21-30P	38	(30)C13, (6)C19, (2)5-20R	208	68.9	2.0	2.1
P36D08M	0U FULL	30	3	NEMA L15-30P	36	(30)C13, (6)C19	208	68.9	2.0	2.1

Monitored Switched (MS) Power Distribution Units (PDUs)*

P08E14M	1U	15	1	NEMA 5-15P	8	(8)5-20R	120	1.7	17.5	10.6
P08E16M	1U	20	1	NEMA L5-20P	8	(8)5-20R	120	1.7	17.5	10.6

Monitored per Outlet (MPO) Power Distribution Units (PDUs)*

P12E21M	0U HALF	20	1	NEMA 5-20P	12	(12)5-20R	120	36.1	2.0	2.1
P36E33M	0U FULL	30	1	NEMA L6-30P	36	(30)C13, (6)C19	208	68.9	2.0	2.1

Monitored and Switched per Outlet (MSPO) Power Distribution Units (PDUs)*

P24G02M	0U FULL	30	3	NEMA L15-30P	24		208	68.9	2.0	2.1
P24G05M	0U FULL	60	3	IEC 60309 3P+E 9h 60A	24	(12)C13, (12)C19	208	68.9	2.0	2.1
P48G21M	0U FULL – 2 sided	60	3	IEC 60309 3P+E 9h 60A	48	(36)C13, (12)C19	208	71.2	2.0	4.4

*MS, MPO, MSPO PDUs will be available to ship on February 28, 2018.

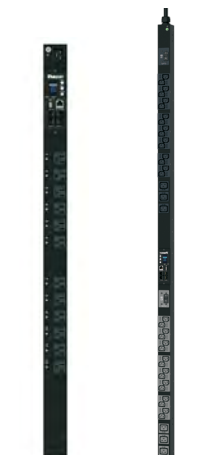
(continued on page 17)



P24D24M



P08E14M



P12E21M P24G02M

Power Distribution Units (PDUs) Accessories (continued)



SmartZone™ G5 W-Lock and V-Lock Compatible Locking Power Cords

Part Number Qty. 1	Part Number Qty. 10	Description	Ratings	Gauge/Cross Section Area	Jacket	Connector Angle	Length (ft.)	Color
LPCA14	LPCA14X	IEC C14 to IEC C13	10A/250V	17AWG/ 1.0mm ²	SJT/H05VV-F	Straight	6*	Black**
LPCB14	LPCB14X	IEC C20 to IEC C19	16A/250V	15AWG/ 1.5mm ²	SJT/H05VV-F	Straight	6*	Black**



SmartZone™ G5 Environmental Sensors

Part Number	Description	Dimensions L x W x H (mm)	Length (m)	Std. Pkg. Qty.	Std. Ctn. Qty.
EA001	Temperature Sensor	44 x 21 x 11	2	1	—
EB001	Temperature and Humidity Sensor	44 x 21 x 11	2	1	—



SmartZone™ G5 Security Accessories

Part Number	Description	Dimensions L x W x H (mm)	Length (m)	Std. Pkg. Qty.	Std. Ctn. Qty.
ACA01	Door switch (magnetic 2 piece)	44 x 21 x 11 (29 x 19 x 7 for magnet)	2	1	—
ACB01	Access hub for handle (cold and hot aisle selectable)	95 x 37 x 29	2	1	—

Industrial Network Uninterruptible Power Supply (UPS)



UPS00100DC



UPS003LSM

Part Number	Description	Std. Pkg. Qty.	Std. Ctn. Qty.
UPS00100DC	Uninterruptible power supply (UPS), 100 watt; no-battery, maintenance-free with remote management; 24 – 28 VDC in/out; wide operating temperature range: -40°C to +60°C; DIN rail mount.	1	—
UPS003LSM	UPS load sense module; optional accessory for use in dual, redundant power supply configurations to monitor load on primary supply.	1	—

Wyr-Grid® Overhead Cable Tray Routing System



Part Number	Description	Std. Pkg. Qty.	Std. Ctn. Qty.
Wyr-Grid® Pathway			
WG12BL10	12" wide x 118.35" (3006.2mm) long pathway section used to carry cables horizontally throughout the system.	10	—
Wyr-Grid® Sidewalls			
WGI4BRC4BL	Wyr-Grid® 4" (102mm) high Snap-On Intersection Bend Radius Control provides 3" (76mm) bend radius control.	1	—
WGS4W4BL	Wyr-Grid® 4" (102mm) high Snap-On Sidewalls.	1	40
Wyr-Grid® Splice Connectors			
WGINTSPLBL	Intersection splice connector quickly joins Wyr-Grid® Pathways at all intersections.	1	10
WGSPL1218BL	Straight splice connector quickly joins two 8" (203mm), 12" (305mm) or 18" (457mm) wide Wyr-Grid® Pathways together.	1	10
Wyr-Grid® Waterfalls			
WGBTMWFBLL	Bottom waterfall provides 1.38" (35mm) bend radius control for cables transitioning down into the racks or cabinets from within the Wyr-Grid® Pathway.	1	10
WGSWF4BL	The side waterfall provides 3" (76mm) bend radius control for cables transitioning down into the racks or cabinets from the side of the Wyr-Grid® Pathway.	1	5
Wyr-Grid® Brackets			
WGTBS12BL	Bracket used to support 12" (305mm) wide Wyr-Grid® Pathway from the ceiling using a pair of 1/2" or 12mm threaded rod drops.	1	5
WGWMTB12BL	Bracket used to support the end of the 12" (305mm) Wyr-Grid® Pathway against the wall. Mounting hardware for attaching to wall not included.	1	5

Additional widths available, 8" (203mm), 18" (457mm), 24" (610mm), and 30" (762mm). Contact Panduit Customer Service for additional information or, www.panduit.com.
For pathway, order number of feet required, in multiples of standard 10' length increments.

J-Pro™ Cable Support System



Part Number	Description	Std. Pkg. Qty.	Std. Ctn. Qty.
Wall Mount			
JP2W-L20	Wall mount, one 1/4 (M6) mounting hole, 2.00 (50.8mm) maximum bundle capacity.	50	—
JP2DW-L20	Hook with clip for use with #12 wire and threaded rod up to 3/8 (9.5mm) in diameter or 1/8 – 1/4 (3.2mm – 6.4mm), 2.00 (50.8mm) maximum bundle capacity.	50	—

FiberRunner® 6x4 Cable Routing System



Part Number	Description	Std. Pkg. Qty.	Std. Ctn. Qty.
FiberRunner® 6" x 4" (150mm x 100mm) Channel and Cover			
FR6X4YL6	Channel, 6'.	6'	36'
FRHC6YL6	Hinged, snap-on channel cover, 6'.	6'	36'
FRSHC6YL6	Split hinged snap-on channel cover, 6'.	6'	36'
FiberRunner® 6" x 4" (150mm x 100mm) Fittings			
FRBC6X4YL	QuikLock™ Coupler.	1	5
FREC6X4YL	End cap.	1	5
FRFWC6X4YL	4-way cross fitting.	1	5
FRFWCSC6YL	4-way cross split cover.	1	5
FRH456X4YL	Horizontal 45° angle fitting.	1	5
FRH45SC6YL	Horizontal 45° angle split cover.	1	5
FRIV456X4YL	Inside Vertical 45° fitting and cover.	1	5
FRIVRA6X4YL	Inside Vertical 90° fitting and cover.	1	5
FROV456X4YL	Outside Vertical 45° angle fitting.	1	5
FROV45SC6YL	Outside Vertical 45° angle split cover.	1	5
FROVRA6X4YL	Outside Vertical 90° angle fitting.	1	5
FROVRASC6YL	Outside Vertical 90° angle split cover.	1	5
FRRA6X4YL	Horizontal right angle fitting.	1	5
FRRASC6YL	Horizontal right angle split cover.	1	5
FRT6X4YL	Horizontal tee fitting.	1	5
FRTSC6YL	Horizontal tee split cover.	1	5
FRRF64YL	Reducer from 6" x 4" FiberRunner® to 4" x 4" Fiber-Duct™ Fitting and Cover.	1	5
FRADC6X4YL	Adapter from 6" x 4" FiberRunner® to 6" x 4" FiberGuide*.	1	5
FiberRunner® Spillouts			
FRSPJ2X2YL	Assembles onto 4x4, 6x4, 12x4, or 24x4 FiberRunner® Channel, spilling over the side into a 2x2 vertical exit.	1	—
FRSPJC26YL	Used to fully enclose 6x4 channel in conjunction with the spill-over junction FRSPJ2X2YL.	1	5
FRVT6X4YL	Vertical tee with hinged door.	1	5
FIDT4X4BL	Used to route cable into one or two pieces of 1.5" (38mm) diameter split corrugated tubing. Black color only.	1	5
FTR4X4YL	3-sided vertical tee trumpet spillout.	1	5
FiberRunner® Brackets			
F2PCLB58	Two-piece bracket attaches to 3/8" (9.5mm) wide x 1 1/2" (38.1mm) or 3/8" (9.5mm) wide x 2" (50.8mm) ladder rack rail.	1	10
FR6TRBN58	New 5/8" threaded rod QuikLock™ Bracket for 4" x 4" and 6" x 4" FiberRunner®.	1	10
FRTBWG12BL	FiberRunner® Threaded Rod Trapeze Bracket for Wyr-Grid® 12" width.	1	10

Additional colors and sizes available, 24x4, 12x4, 4x4, and 2x2.

Contact Panduit Customer Service for additional information or www.panduit.com.

For channel and channel cover, order number of feet required, in multiples of standard 6' length increments.

Faceplates (for use with Mini-Com® Connectors)



CFFPL4BL



CFPL4

CFPE2

Part Number	Description	Std. Pkg. Qty.	Std. Ctn. Qty.
Furniture Faceplates			
CFFP4BL	Furniture faceplate, 4-port, standard, Black.	1	10
CFFPL4BL	Furniture faceplate with labeling, 4-port, standard, Black.	1	10
CFFPHM4BL	Furniture faceplate, 4-port, Herman Miler, Black.	1	10
Classic Faceplates			
CFP2SY	Classic faceplate single gang, 2-port.	1	10
CFPL2WHY	Classic faceplate, single gang, 2-port with label and label cover.	1	10
CFPL4WHY	Classic faceplate, single gang, 4-port with label and label cover.	1	10
Executive Faceplates			
CFPE2WHY	Executive faceplate, single gang, 2-port with label and label cover.	1	10
CFPE4WHY	Executive faceplate, single gang, 2-port with label and label cover.	1	10

Additional colors available. Contact Panduit Customer Service for additional information or www.panduit.com.

IndustrialNet™ Data Access Port



IAPNG5EWH

Part Number	Description	Std. Pkg. Qty.	Std. Ctn. Qty.
IAPNG5EWH	GFCI data access port, Category 5e coupler and blank, White.	1	—

Surface Mount Box (for use with Mini-Com® Connectors)



CBX2IW-AY



CBXQ2IW-A

Part Number	Description	Std. Pkg. Qty.	Std. Ctn. Qty.
CBX1IW-A	Surface mount box, 1-port, plenum rated. Off White.	1	10
CBXQ1IW-A	Surface mount box, 1-port, plenum rated. Off White.	1	10
CBX2IW-AY	Surface mount box, 2-port, plenum rated. Off White.	1	10
CBXQ2IW-A	Surface mount box, 2-port, plenum rated. Off White.	1	10
CBX4IW-AY	Surface mount box, 4-port, Off White.	1	10
CBXQ4IW-A	Surface mount box, 4-port, plenum rated. Off White.	1	10
CBXF6IW-AY	Surface mount box, 6-port, multimedia, Off White.	1	10
CBXQ6IW-A	Surface mount box, 4-port, plenum rated. Off White.	1	10

Additional colors available. Contact Panduit Customer Service for additional information or www.panduit.com.

Surface Raceway



LD3IW-A



OFC1IW-X



JB1IW-A

Part Number	Description	Std. Pkg. Qty.	Std. Ctn. Qty.
LD Profile Raceway			
LD3IW6-A	LD3, low voltage 1-piece single channel raceway with adhesive.	6 Ft.	120 Ft.
LD5IW6-A	LD5, low voltage 1-piece single channel raceway with adhesive.	6 Ft.	120 Ft.
LD10IW6-A	LD10 low voltage 1-piece single channel raceway with adhesive.	6 Ft.	120 Ft.
LD Profile Raceway Fittings			
DCF10IW-X	Drop ceiling/entrance end fitting for use with LD10 raceway.	10	50
OFC10WH-X	Outside corner fitting for use with LD10 raceway.	10	50
ECF10WH-X	End cap fitting for use with LD10 raceway.	10	50
RAF10IW-X	Right angle fitting for use with LD10 raceway.	10	50
Junction Boxes Used with LD Profile Raceway			
JB1IW-A	Single gang one-piece outlet box with adhesive backing.	1	10
JBX3510IW-A	Single gang two-piece snap together outlet box with adhesive backing.	1	10
JBP1DIW	Single gang power rated two-piece deep outlet box.	1	10
JBP2DIW	Double gang power rated two-piece deep outlet box.	1	10

*Raceway listed in 6 foot lengths. Other lengths available include: 8 and 10 foot.

Raceway fittings listed for LD raceway size 10. LD raceway size 3 and 5 also available.

Additional colors available. Contact Panduit Customer Service for additional information or www.panduit.com.

Zone Enclosures



PZICEA



PZWMC12W

Part Number	Description	Std. Pkg. Qty.	Std. Ctn. Qty.
PZICEA	PanZone® Active In-Ceiling Enclosure with hinged door gas-assist air cylinders. Accepts up to 2 RU of active equipment and up to 6 RU of passive equipment, includes mounting brackets and integrated horizontal slack manager, AC power provisions, fan assembly, air dam, and electrical junction box.	1	—
PZWMC12W	PanZone® Wall Mount Cabinet with windowed front door, 12 RU, Black.	1	—

Universal Network Zone System



Z23U



Z22U

Part Number	Description	Std. Pkg. Qty.	Std. Ctn. Qty.
Z23U-S25	24" x 36" mild steel enclosure, for two industrial switches, includes (16) Category 6 UTP copper patch cords and jacks, (4) MM LC fiber uplink patch cords with (6) adaptors and redundant power supplies, maintenance-free UPS.	1	—
Z23U-S25S	24" x 36" mild steel enclosure, for two industrial switches, includes (16) Category 6A STP copper patch cords and jacks, (4) MM LC fiber uplink patch cords with (6) adaptors and redundant power supplies, maintenance-free UPS.	1	—
Z23U-S24	24" x 36" mild steel enclosure, for two industrial switches, includes (16) Category 6 UTP copper patch cords and jacks, (4) MM LC fiber uplink patch cords with (6) adaptors and redundant power supplies.	1	—
Z23U-S24S	24" x 36" mild steel enclosure, for two industrial switches, includes (16) Category 6A STP copper patch cords and jacks, (4) MM LC fiber uplink patch cords with (6) adaptors and redundant power supplies.	1	—
Z22U-S15	24" x 24" mild steel enclosure, for one industrial switch, includes (8) Category 6 UTP copper patch cords and jacks, (2) MM LC fiber uplink patch cords with (6) adaptors and redundant power supplies, maintenance-free UPS.	1	—
Z22U-S15S	24" x 24" mild steel enclosure, for one industrial switch, includes (8) Category 6A STP copper patch cords and jacks, (2) MM LC fiber uplink patch cords with (6) adaptors and redundant power supplies, maintenance-free UPS.	1	—
Z22U-S14	24" x 24" mild steel enclosure, for one industrial switch, includes (8) Category 6 UTP copper patch cords and jacks, (2) MM LC fiber uplink patch cords with (6) adaptors and redundant power supplies.	1	—
Z22U-S14S	24" x 24" mild steel enclosure, for one industrial switch, includes (8) Category 6A STP copper patch cords and jacks, (2) MM LC fiber uplink patch cords with (6) adaptors and redundant power supplies.	1	—

Pre-Configured Network Zone Systems



Z23C-S



Z22C-S

Part Number	Description	Std. Pkg. Qty.	Std. Ctn. Qty.
Z23C-S	24" x 36" mild steel enclosure, for two industrial switches, includes (16) Category 6 UTP copper patch cords and jacks, (4) MM LC fiber patch cords with (6) adaptors, backplane and cable management.	1	—
Z22C-S	24" x 24" mild steel enclosure, for two industrial switches, includes (8) Category 6 UTP copper patch cords and jacks, (2) MM LC fiber patch cords with 6 LC adaptors, backplane and cable management.	1	—

Pre-Configured Industrial Distribution Frame (IDF)



ZDF48-RA



ZDF242430

Part Number	Description	Std. Pkg. Qty.	Std. Ctn. Qty.
ZDF48-RA	Mild steel enclosure; 26U; for two access and two distribution switches; pre-installed with front and rear rack angles, fiber enclosure, 48-port patch panel, cable management, grounding, 10" DIN rail, (2) fiber spools, (2) back panels, (2) ESD ports, 30" length of duct, (2) duplex power receptacles, cage nuts, labeling for cable routing, strain relief bars, (4) power cables; includes ESD wrist strap, (1) hook and loop, (1) grounding cable, mounting hardware, conduit schedule and ingress template.	1	—
ZDF242430	Mild steel enclosure, 12U, for two access or two distribution switches; pre-installed with front and rear rack angles, fiber enclosure, 48-port patch panel, grounding, 10" DIN rail, (2) fiber spools, (1) back panel, (2) ESD ports, 30" length of duct, cage nuts, labeling for cable routing, strain relief bars; includes ESD wrist strap, (1) hook and loop, (1) grounding cable, mounting hardware, conduit schedule and ingress template.	1	—

Grounding



GB4B0624TPI-1



HTWC250-2-1



HTWC2-2-1



HTCT250-2-1



RGCBNJ660PY



RGRKCBNJY



RGTBSG-C

TRBSK



UGB2/0-414-12



UGB-B-SO



UGB-IN-SO

Part Number	Description	Std. Pkg. Qty.	Std. Ctn. Qty.
CNBK	Bonding Cage Nut Kit.	1	—
GB2B0304TPI-1	Grounding busbar, BICSI 1/4" x 2" x 10" (6.4mm x 51mm x 254mm).	1	—
GB2B0306TPI-1	Grounding busbar, BICSI 1/4" x 2" x 12" (6.4mm x 51mm x 305mm).	1	—
GB4B0612TPI-1	Grounding busbar, BICSI 1/4" x 4" x 12" (6.4mm x 102mm x 305mm).	1	—
GB4B0624TPI-1	Grounding busbar, BICSI 1/4" x 4" x 20" (6.4mm x 102mm x 508mm).	1	—
HTWC250-2-1	Kit contains HTCT250-2-1 HTAP and CLRCVR3-1 clear cover, terminates code 250 kcmil – #2 AWG Run or flex 4/0 – #2 AWG Run, code #2 – #6 AWG STR/SOL or flex #2 – #8 AWG Tap 1, code or flex #8 – #14 AWG Tap 2.	1	—
HTWC2-2-1	Kit contains HTCT2-2-1 HTAP and CLRCVR2-1 clear cover, terminates code #2 – #6 AWG STR/SOL Run and Tap 1 or flex #2 – #8 AWG Run and Tap 1, code or flex #8 – #14 AWG Tap 2 and Tap 3.	1	—
HTCT250-2-1	Copper Compression HTAP with code 250 kcmil – #2 AWG Run, code #2 – #6 AWG STR/SOL Tap 1 and code #8 – #14 AWG Tap 2 or flex 4/0 – #2 AWG Run, flex #2 – #8 AWG Tap 1 and flex #8 – #14 AWG Tap 2.	1	—
RGCBNJ660P22	Jumper kits, Common Bonding Network (CBN), #6 AWG (16mm²) jumper, 60" (1.52m) length.	1	—
RGCBNJ660PY	Jumper kits, Common Bonding Network (CBN), #6 AWG (16mm²) jumper, 60" (1.52m) length.	1	—
RGESD2B-1	Two-hole ESD port with 5/8" hole spacing; provided with an ESD protection sticker, 0.16 oz. (5cc) of antioxidant, two cage nut bonding studs and two #12-24 bonding nuts.	1	20
RGESDWS	Adjustable fabric ESD wrist strap with 6' coil cord, banana plug, 1 meg ohm resistor and 4mm snap.	1	—
RGRB19U	Grounding busbar kits, 19" (483mm) length, 20 mounting holes, 5/8" (15.9mm) hole spacing.	1	—
RGRB19Y	Grounding busbar kits, 19" (483mm) length, 14 mounting holes, 1/2" (12.7mm) hole spacing.	1	—
RGRKCBNJY	Jumper kit, rack grounding retrofit equipment.	1	—
RGS134-1Y	Grounding strip kits, one, 78.65" (2m) x 0.67" (17mm) x 0.05" (1.27mm) strip.	1	—
RGTBSG-C	Green thread-forming bonding screw, #12-24 x 1/2".	100	—
TRBSK	Bonding stud kit for threaded #12-24 rail fasteners.	1	4
UGB2/0-414-12	Universal ground bar accepts #14 – #4 AWG wire in 12 wire ports and up to a 2/0 AWG main equipment grounding conductor with a compression or mechanical connector; 8.28" (210.3mm) length, 0.62" (15.7mm) width, 0.48" (12.2mm) height.	1	10
UGB2/0-414-6	Universal ground bar accepts #14 – #4 AWG wire in 6 wire ports and up to a 2/0 AWG main equipment grounding conductor with a compression or mechanical connector, 4.92" (125mm) length, 0.62" (15.7mm) width, 0.48" (12.2mm) height.		
UGB-B-SO	Universal ground bar bonding stand-offs; includes two stand-offs and hardware; 2.34" (59.3mm) length, 0.63" (15.9mm) width, 0.75" (19.1mm) height.	1	10
UGB-IN-SO	Universal ground bar isolation stand-offs; includes two stand-offs and hardware; 1.57" (40mm) length, 0.59" (15.0mm) width, 0.98" (25.0mm) height.	1	10

Labeling



LS8EQ-KIT-ACS



H000X025H1C



C125X030FJC

Part Number	Description	Std. Pkg. Qty.	Std. Ctn. Qty.
LS8EQ-KIT-ACS	Panduit® PanTher™ LS8EQ Hand-Held Thermal Transfer Printer with QWERTY keypad kit contains the LS8E-ACS 120 VAC power adapter for North America along with the hand-held printer, PANTHERLINK software, one cassette of S100X150VAC self-laminating labels, six AA alkaline batteries, the LS8-CASE rigid carrying case, the LS8-PCKIT USB cable and PC interface software, the LS8-IB protective impact bumper, the LS8-WS wrist strap, a quick reference card, and an operator's manual.	1	1
NWSLC-2Y	Yellow cable identification sleeve for 2mm simplex fiber cable, 1" length, 100 per pack.	100	1000
R100X125V1T	Turn-Tell® Thermal Transfer Vinyl Label, 1.00" W X 1.25" H, 0.38" print-on area, Clear/White, 3" Core 12 – 10 AWG wire/cable, Category 3 UTP cable.	2500	10000
S100X150YAJ	Laser/inkjet, self-laminating label, polyester, 1.00" W x 1.50" L, 0.50" print-on area, Clear/White.	1	10
S100X150VAC	P1 cassette, self-laminating label, vinyl, 1.00" W x 1.50" H, 0.50" print-on area, Clear/White.	1	10
S100X150VATY	Thermal transfer, self-laminating label, vinyl, 1.00" W x 1.50" H, 0.50" print-on area, Clear/White.	5000	—
H000X025H1C	Heat shrink labels, White, polyolefin. 0.13" (3.1mm) diameter, 8' (2.4m) length, and 0.25" (6.4mm) width, 22 – 18 AWG.		
C125X030FJC	Network label, P1 cassette, 1.25" W x 0.30" H, polyolefin, White, 200 labels/cassette, 1 pc.	1	
C252X030FJC	Network label, P1 cassette, 2.52" W x 0.30" H, polyolefin, White, 125 labels/cassette, 1 pc.	1	
PCMB-3	Preprinted wire marker books containing wire labels.		

Cable Ties and Bundling



Part Number	Description	Std. Pkg. Qty.	Std. Ctn. Qty.
HLM-15R0	Hook & loop roll, 15' L (4.6m), 0.33" W (8.4mm), Black.	1	10
HLS-75R0	Hook & loop roll, 75' L (22.9m), 0.75" W (19.1mm), Black.	1	10
HLS-15R0	Hook & loop roll, 15' L (4.6m), 0.75" W (19.1mm), Black.	1	10
HLT2I-X0	Hook & loop tie, loop style, 8.0" L (203mm), 0.50" W (12.7mm), Black.	10	100
TTR-35RX0	Hook & loop roll, 10 roll-pack, low profile, 35' L (10.7m), 0.75" W (19.1mm), Black.	1	10
ERT2M-C20	Elastomeric cable ties, Miniature cross section, 8.5L (216mm), tensile strength: 80, bundles up to 2.4 (60mm), Black.		

Stainless Steel Cable Ties



Part Number	Description	Std. Pkg. Qty.	Std. Ctn. Qty.
MLT2S-CP	Stainless steel self-locking head design cable ties, 304 stainless steel, max bundle diameter: 2in, 7.9in. Tensile strength: 890.	100	500

Cable Accessories



Part Number	Description	Std. Pkg. Qty.	Std. Ctn. Qty.
ABMM-A-D	4-way adhesive backed cable tie mount, mounted with rubber adhesive tape. 0.75" long x 0.75" wide (19.1 x 19.1 mm), White.	500	5000
ABM2S-A-D	4-way adhesive backed cable tie mount, mounted with rubber adhesive tape. 1" long x 1" wide (25.4 x 25.4 mm), White.	500	5000
ABMT-A-C	Cable tie mount for use with HLT/HLS Tak-Ty® Hook & Loop Cable Ties, mounted with a rubber adhesive tape. 1.12" long x 1.12" wide (28.5 x 28.5 mm). Natural.	100	1000
ABMT-A-C20	Cable tie mount for use with HLT/HLS Tak-Ty® Hook & Loop Cable Ties, mounted with a rubber adhesive tape. 1.12" long x 1.12" wide (28.5 x 28.5 mm). Black.	100	1000
BEC38-A-L	Adhesive backed bevel entry clip, 0.38" (9.7mm) bundle, Natural.	50	500
ACC19-A-C	Adhesive backed cord clip, 0.19" (4.8mm) bundle, Natural.	100	1000
CLT150F-X4	Corrugated loom tubing slit wall measures 1.50" (38.1mm) x 10' (3.0m), Yellow.	1	—
GEE99F-A-C	Slotted grommet edging with adhesive lined, 0.099" thickness, Natural.	1	—

Security Devices



Part Number	Description	Std. Pkg. Qty.	Std. Ctn. Qty.
RJ45 Lock-in Devices			
PSL-DCPLX-BL-C	RJ45 plug lock-in device, ten devices (Black) and one installation/ removal tool (Black).	1	100
PSL-DCPLRX-BU	Recessed RJ45 plug lock-in device, ten devices (Blue) and one installation/removal tool (Black).	1	20
PSL-DCPLS	Super recessed RJ45 plug lock-in device, ten devices (Red) and one installation/removal tool (Black).	1	20
RJ45 Block-out Devices			
PSL-DCJLB-BL	Jack module block-out device, ten block-outs (Black) and one removal tool (Black).	1	20
PSL-DCJLB-BU	Jack module block-out device, ten block-outs (Blue) and one removal tool (Black).	1	20
PSL-DCJLB-C	Jack module block-out device, ten block-outs (Red) and one removal tool (Black).	1	100
LC Adapter Block-out Device			
PSL-LCAB-BU	LC duplex adapter block out device, ten devices (Blue) and one removal tool (Black).	1	20
Lockout Tagout Devices			
PSL-CBNT	"No Tool" universal circuit breaker lockout.	1	10
PSL-8	Safety lockout padlock non-conductive padlock, 1.58" x 1.77" body, Red.	1	6

Tools



Part Number	Description	Std. Pkg. Qty.	Std. Ctn. Qty.
EGJT-1	TG jack module and field term plug termination tool.	1	—
TGJT	TG jack termination tool, for high-volume installations.	1	—
CCAST	Copper cable jacket stripper.	1	1
CWST	Copper wire snips.	1	1
PDT110	110 punchdown tool.	1	1
CBOT24K	Cable bundle organizing tool.	1	10
GS4MT	Installation tool for use with stainless steel cable ties.		



PANDUIT®

Panduit Corp.
World Headquarters
Tinley Park, IL 60487

800.777.3300

www.panduit.com

[< Previous Page](#) | [Table of Contents](#)