

Standard Package

www.FiberFoxAmerica.com

Mini 4S

4 Motors
Active Alignment Splicer



FiberFox MiniSeries Splicers 12R, 6S, 5C, 4S – The Most Complete Fusion Splicer Kit

- | | | |
|-------------------------------------|-----------------------------|-------------------------|
| MiniSeries Splicer | Thermal Stripper (All kits) | FiberFox Splice Sleeves |
| Precision Cleaver w/ Auto Bin | Manual Stripper | Spare Electrodes (pair) |
| Cleaver Soft Case | Universal SOC Holder (2) | Sweeper Brush |
| Two Battery Packs | SOC Heater Block | Scrubber Brush (12R) |
| Cooling Tray | USB to Mini HDMI Cable | Facial Brush (12R) |
| Fiber Holders (1pr) (4S,5C,6S) | Power cord / AC Adapter | Yellow Hard Case |
| Fiber Holders (3pr-1f,6f,12f) (12R) | USB Charger | Soft Cover User Manual |
| Shoulder Strap | Phillips Screwdriver | Operation Manual CD |

Specifications

Splicing Method	Active Alignment DAA(Digitalized Active Alignment)
Average Loss	SM(0.02dB) / MM(0.01dB) / DS(0.05dB) / NZDS(0.05dB) / G.657(0.02dB)
Return Loss	>>60dB
Splice Time	12s average SM / SM 7s Quick mode
Electrode Lifespan	>3,500 arcs
Applicable Fiber	SM(ITU-T G.652, MM(ITU-T G.651), DS(ITU-T G.653), NZDS(ITU-T G.655), IT-G657A, IT-G657B 0.25mm, 0.9mm, 2.0mm, 2.4mm, 3.0mm, FLAT(indoor cable)
Cleaved Length	Coating Diameter < 0.25mm = 5-16mm, Coating Diameter > 0.25mm = 8-16mm minimum
Coating Diameter	100-1000um
Cladding Diameter	80-150um
Heating Programs	Factory installed mode : 3, User installable mode : 23
Heating Time	Typical 18s
Protection Sleeve	40mm, 60mm, SOC-3.0, SOC-0.9
Data Output	Micro HDMI-USB master device
Splice Programs	8 user modes, User installable mode : 70+
Splice Memory	Up to 2000 records
Battery	Typical 200 Cycles (Splice & Heat) / single battery <2 Batteries Standard>
Power Supply	AC 100-240V input or DC 9-14V
Monitor	Color 4.3" LCD monitor, with Touch Screen (Tempered Glass)
Cameras	2 CCD camera system
Magnification	XY : 150 times , X/Y : 300 times
Fiber Display	X/Y or XY, single X.Y
Weight	1.31Kg (without battery)
Size	122mm X 124mm X 138 mm
Wind Protection	The max wind speed 15m/s
Operating Environment	Elevation 0-5000 meters, -15~60°C, 0-95% relative humidity
Storage Condition	Temperature -40 to 80°C, 0-95% relative humidity, battery -20-30°C
Pull Test	1.96~2.25N (standard)
Attenuation splicing	Range : 0.1dB ~ 20dB (0.1dB step)



4 Motors
Active Alignment Splicer
Compatible with all leading Splice on Connectors

1.31 kg	400 cycles	7 sec	0.02 dB
-------------------	----------------------	-----------------	-------------------

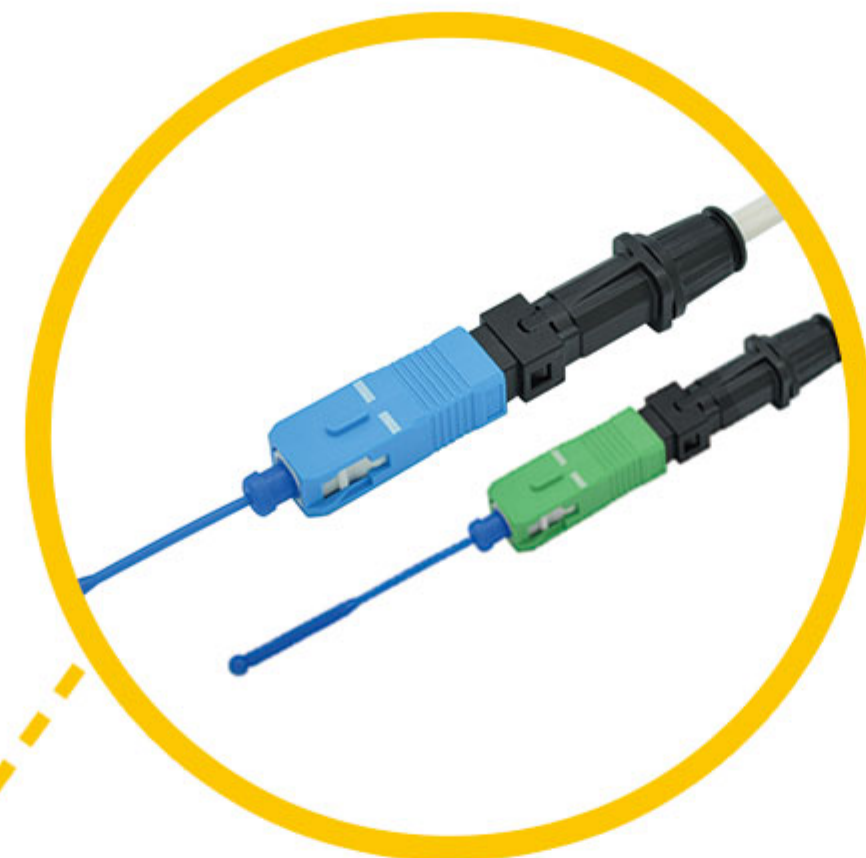
Characteristic



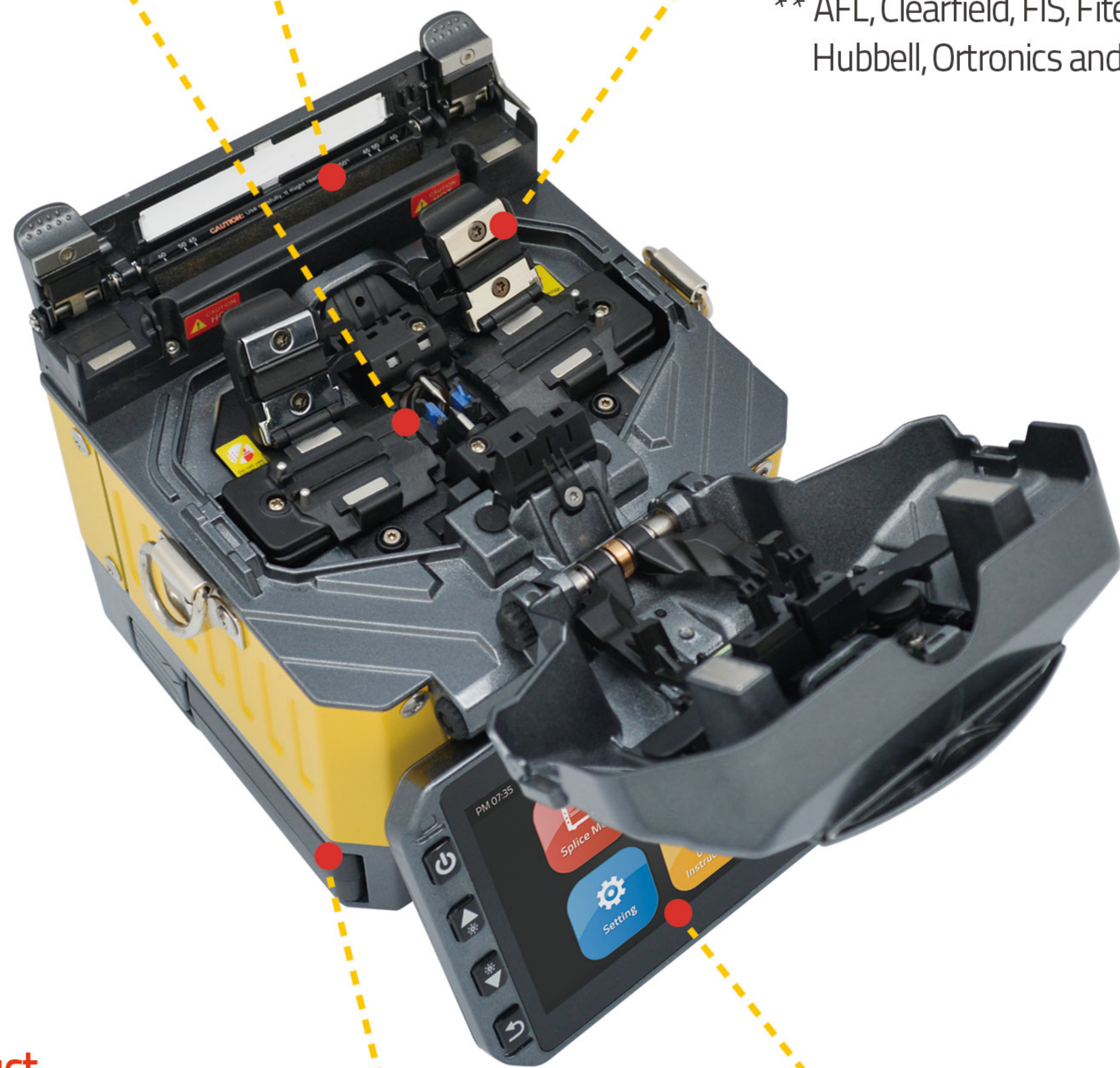
900µm fiber holder included



Cooling tray included



Compatible with all leading Splice on Connectors
** AFL, Clearfield, FIS, Fitel, Greenlee, Hubbell, Ortronics and more.



Mini 4S

1.31kg
(Without Battery)

122 x 124 x 138 mm

Optional product



Work Table Bag



Industry's First!
Two Batteries are Included in Standard Package
- 400 cycles (splicing & heating) with Two Batteries



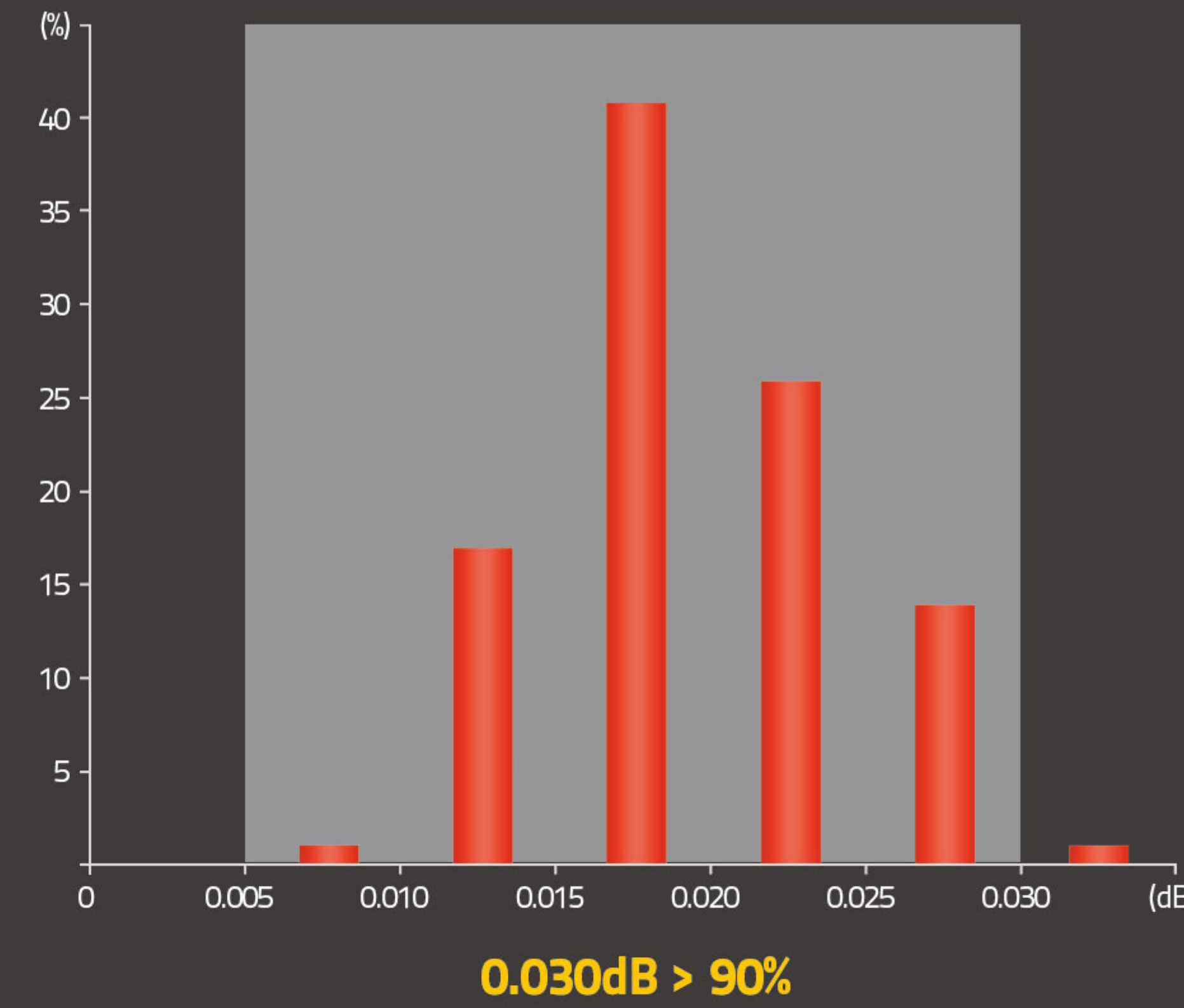
Full Touch Screen
- GUI Interface
- Tempered Glass

01 Performance

Performance

Perfect performance under any environmental conditions

- Temperature: -15-60°C
- relative humidity: 0-95%
- Elevation: 0-5000meter
- The max wind speed: 15m/s



02

SOC Compatible



03

Durability



Dustproof

Waterproof

04

FTTH Solution

