

# Standard Package

www.FiberFoxAmerica.com

# Mini 6S

The Smallest Core Alignment Splicer

## FiberFox MiniSeries Splicers 12R, 6S, 5C, 4S – The Most Complete Fusion Splicer Kit

MiniSeries Splicer	Thermal Stripper (All kits)	FiberFox Splice Sleeves
Precision Cleaver w/ Auto Bin	Manual Stripper	Spare Electrodes (pair)
Cleaver Soft Case	Universal SOC Holder (2)	Sweeper Brush
Two Battery Packs	SOC Heater Block	Scrubber Brush (12R)
Cooling Tray	USB to Mini HDMI Cable	Facial Brush (12R)
Fiber Holders (1pr) (4S,5C,6S)	Power cord / AC Adapter	Yellow Hard Case
Fiber Holders (3pr-1f,6f,12f) (12R)	USB Charger	Soft Cover User Manual
Shoulder Strap	Phillips Screwdriver	Operation Manual CD



**3 YEAR WARRANTY**

# Specifications

Splicing Method	Core Alignment AOCAT(Automatic Optical Core Analysis & Tracking System)
Average Loss	SM(0.02dB) / MM(0.01dB) / DS(0.04dB) / NZDS(0.04dB) / G.657(0.02dB)
Return Loss	>>60dB
Splice Time	12s average SM / SM 7s Quick mode
Electrode Lifespan	>3,500 arcs
Applicable Fiber	SM(ITU-T G.652, MM(ITU-T G.651), DS(ITU-T G.653), NZDS(ITU-T G.655), IT-G657A, IT-G657B) 0.25mm, 0.9mm, 2.0mm, 2.4mm, 3.0mm, FLAT(indoor cable)
Cleaved Length	Coating Diameter < 0.25mm = 8-16mm, Coating Diameter > 0.25mm = 16mm minimum
Coating Diameter	100-1,000um
Cladding Diameter	80-150um
Heating Programs	Factory installed mode : 11, User installable mode : 23
Heating Time	Typical 18s
Protection Sleeve	40mm, 60mm, SOC Connector
Data Output	Micro HDMI-USB master device
Splice Programs	Factory installed mode: 33, User installable mode: 70+
Splice Memory	Up to 2,000 records and 2,000 splice images
Battery	Typical 200 Cycles (Splice & Heat) / single battery <2 Batteries Standard>
Power Supply	AC 100-240V input or DC 9-14V
Monitor	Color 4.3" LCD monitor, with Touch Screen (Tempered Glass)
Cameras	2 CCD camera system
magnification	XY style : 150 power, X/Y : 300 power
Fiber Display	X/Y or XY, single X.Y
Weight	1.39Kg (without battery)
Size	122mm X 124mm X 138 mm
Wind Protection	The max wind speed 15m/s
Operating Environment	Elevation 0-5,000 meters, -15-60°C, 0-95% relative humidity
Storage Condition	Temperature -40 to 80°C, 0-95% relative humidity, battery -20-30°C
Pull Test	1.96-2.25N (standard)
Attenuation splicing	Range : 0.1dB ~ 20dB (0.1dB step)



# The Smallest Core Alignment Splicer

Compatible with all leading Splice on Connectors

1.39  
kg

400  
cycles

7  
sec

0.01  
dB

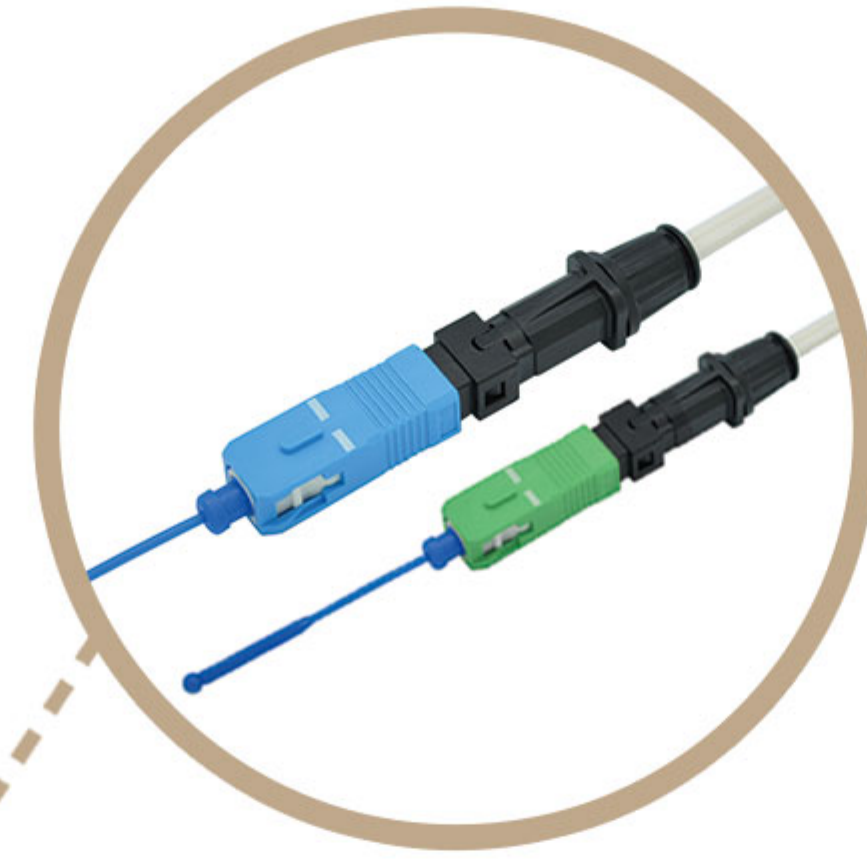
# Characteristic



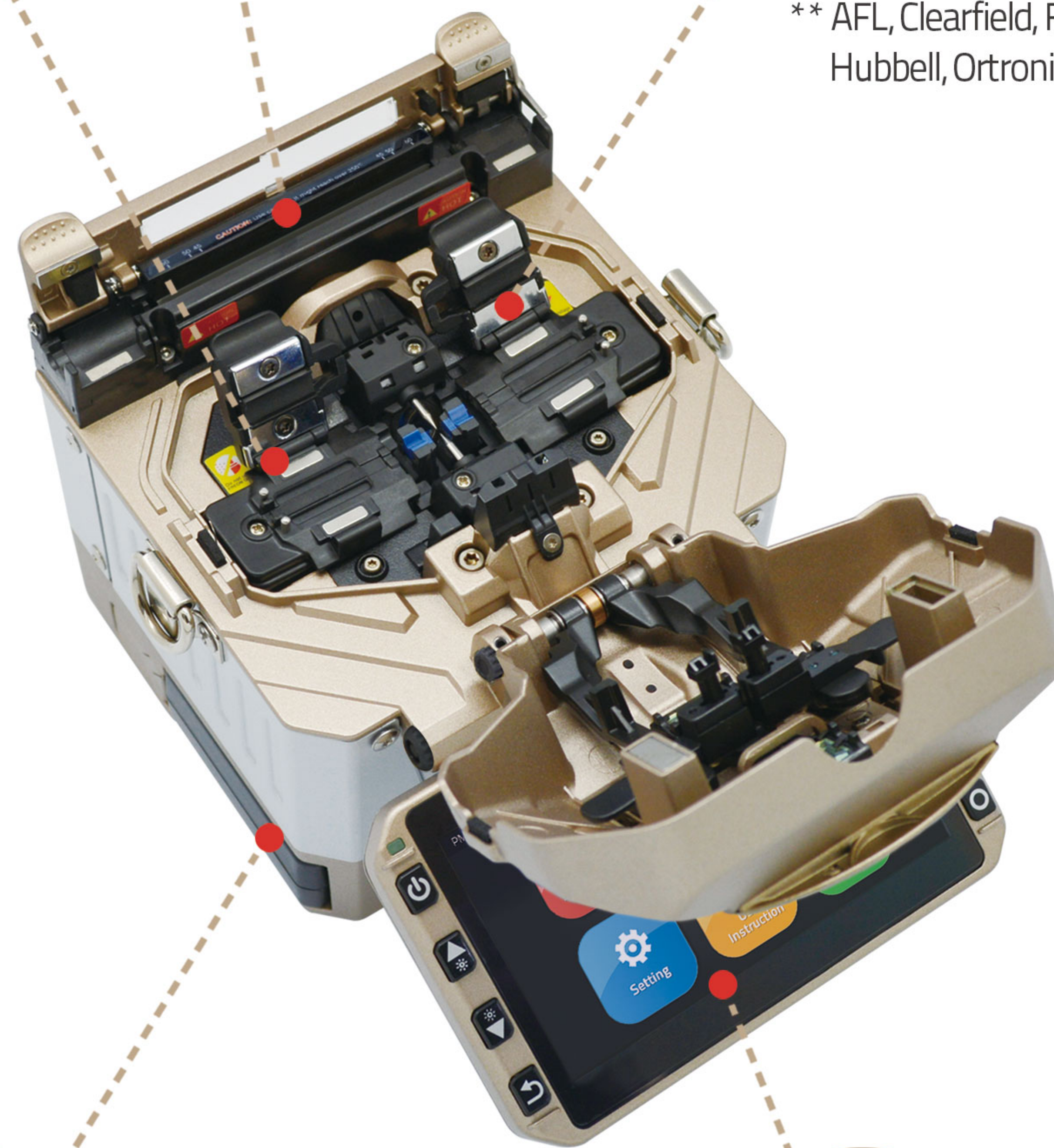
900µm fiber holder included



Cooling tray included



Compatible with all leading Splice on Connectors  
\*\* AFL, Clearfield, FIS, Fitel, Greenlee, Hubbell, Ortronics and more.



# Mini 6S

1.39kg  
(Without Battery)

122 x 124 x 138 mm



### Industry's First!

Two Batteries are Included in Standard Package  
- 400 cycles (splicing & heating) with Two Batteries



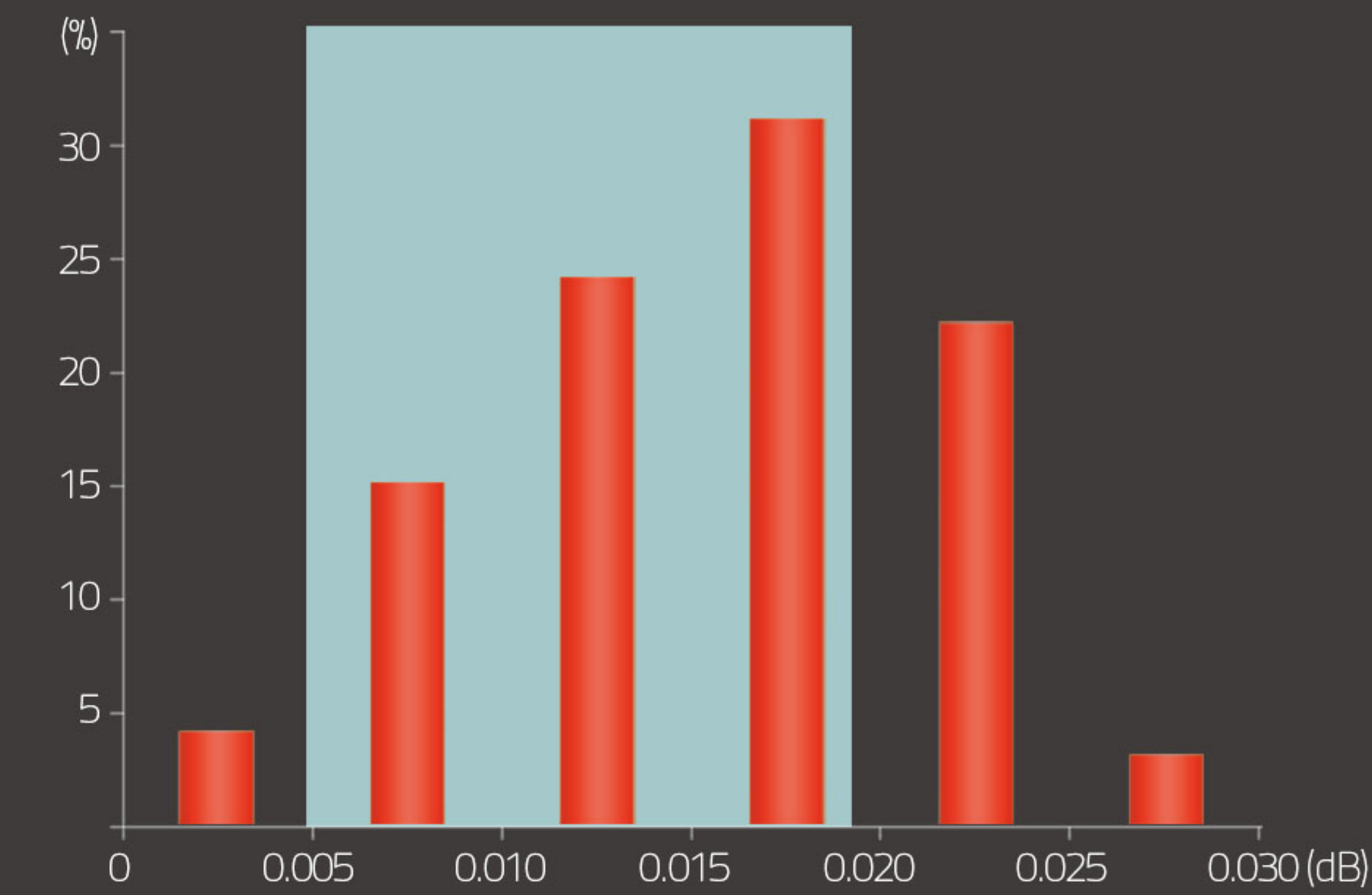
### Full Touch Screen

- GUI Interface
- Tempered Glass

# 01

## Performance

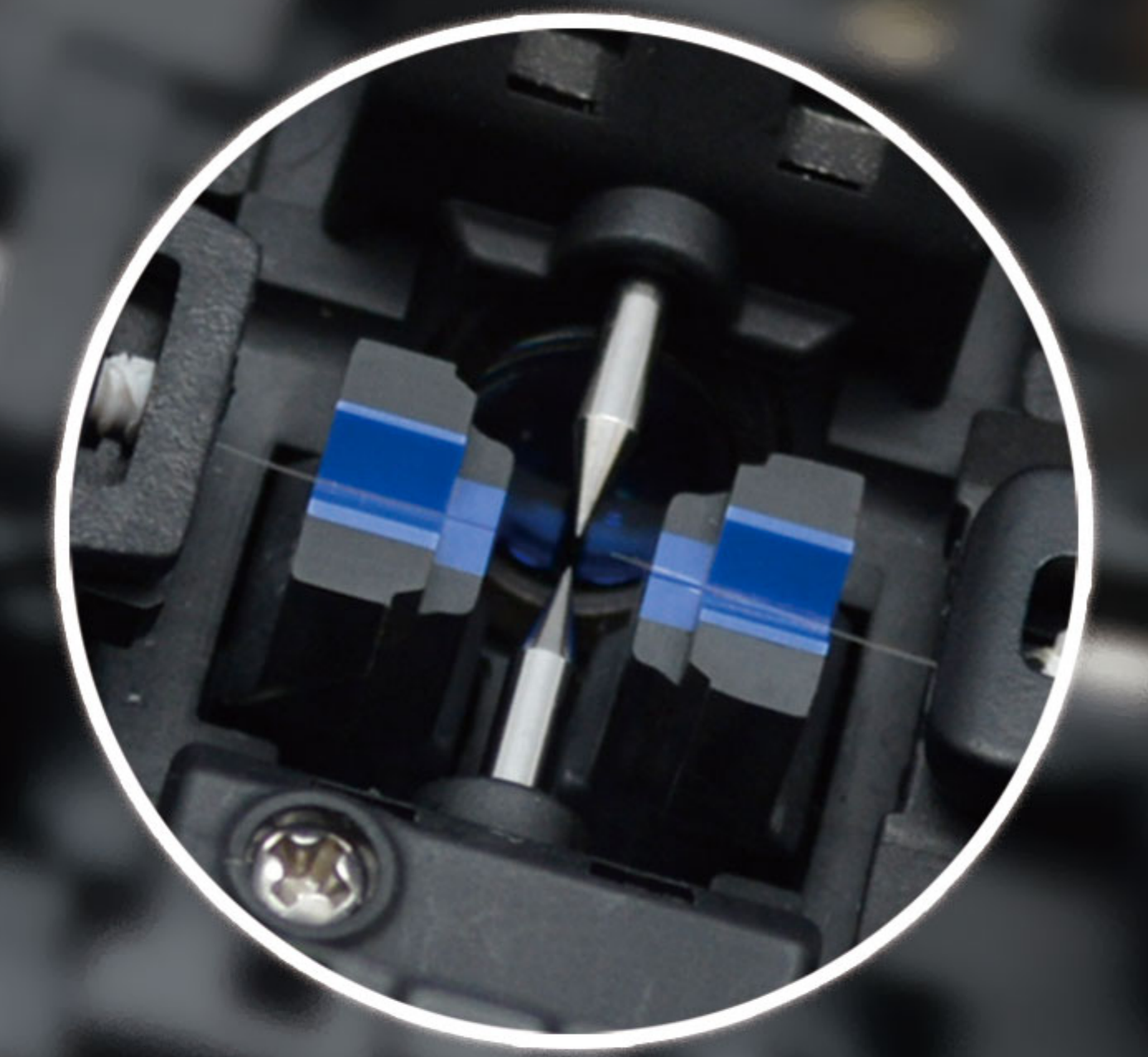
Guaranteed Stability and Splicing Performance



0.005 ~ 0.019dB : 80 (%)

# 02

## The Fastest Splicing Time



7sec  
with SM fiber

# 03

## Durability

1meter



Anti-shock



Dustproof

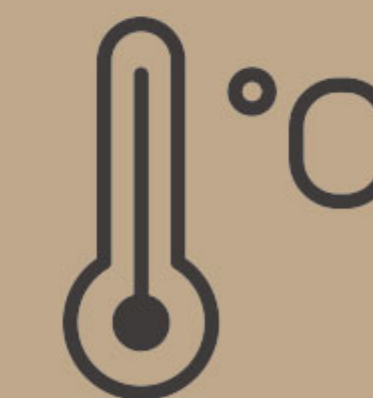


Waterproof

# 04

## Reliability

Perfect performance under any environmental conditions



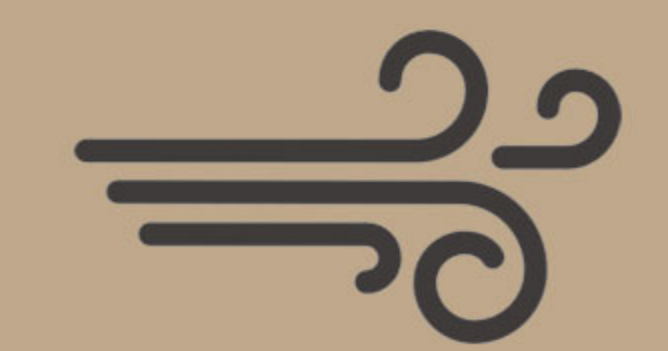
Temperature  
-15~60°C



relative humidity  
0~95%



Elevation  
0~5000meter



The max wind speed  
15m/s

Comply with IEC Standard