

# INFINIUM™ PATCH CORDS

## Infinium Patch Cords

Legrand® Infinium patch cords are available as 2.0 mm zip cords or as round SpaceSaver cords. LC duplex connectors are used with SpaceSaver cables and are available in either A-B or A-A polarity per the TIA 568 standard. Infinium SpaceSaver cords are also available with reconfigurable LC duplex connectors, combining the convenience of a single connector shell with the ability to change polarity in the field. 50-micron laser optimized multimode LC fiber cords are available in either standard performance or premium performance. Standard performance 50-micron LC cords are polished to a 0.50 dB maximum insertion loss. Premium performance 50-micron LC cords are polished to a 0.15 dB maximum insertion loss. Single-mode insertion loss is 0.30 dB max.

2 mm duplex fiber optic zip cords are available using either 50-micron OM4, 50-micron OM3, or single-mode OS2 fiber. Standard configurations include LC-LC, SC-SC and SC-LC. Duplex zip cords include duplexing clips, either installed at the factory or unassembled in the bag – your choice.

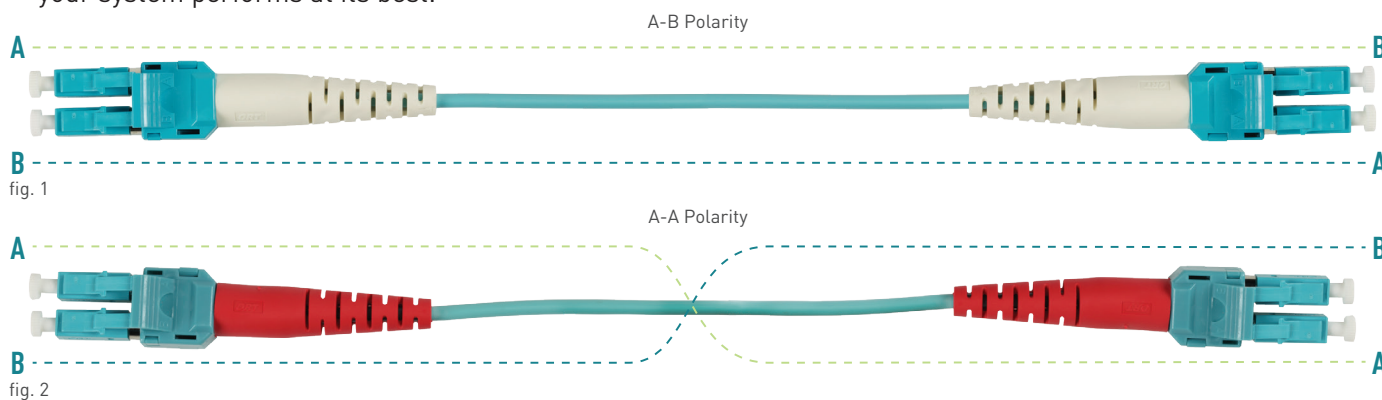
Array cords are the patch cords used in parallel optics systems. Since the switch gear utilizes MTP®/MPO connectors, the array cord is a 12 or 24 fiber MTP-to-MTP cable. Since the switch port has a male, pinned MPO connection and the trunk cable connector is typically female, unpinned, the array cord may be unpinned on one end and pinned on the other. The Infinium array cords utilize small diameter microarray interconnect cable and 12 or 24 fiber MTP plugs.

Many patch cord lengths are stocked. Most lengths are available with expedited delivery. Please speak to a Legrand representative for assistance.

All Legrand patch cords and pigtails are manufactured with bend insensitive fiber.

Single connector, 6-connector and 12-connector LC and SC pigtails are stocked in 1 and 2-meter lengths. All pigtail products include a 1-meter breakout section consisting of 900-micron buffered fiber with terminated ends.

The cord is often the last thing thought of when assembling a fiber cabling infrastructure, but that network is only as strong as its weakest link. Remember to order only Legrand Infinium fiber patch cords to ensure that your system performs at its best.



## Reconfigurable LC Connector (RLC)

FIGURE 1

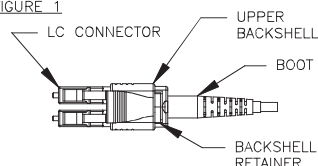


FIGURE 2

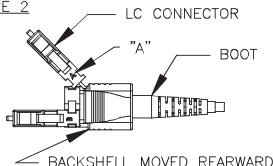
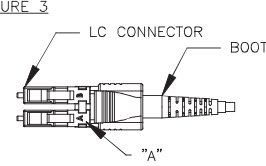


FIGURE 3



\*MTP® is a registered trademark of US Conec Ltd.

designed to be better.™

**legrand**®

# INFINIUM™ PATCH CORDS

## Fiber Optic Cable Assemblies – SpaceSaver

### Premium Performance Laser Optimized (50/125) OM4 LC-PC OFNP (A-B\*)

PART NO.	DESCRIPTION
OR-P3DG8LPAZAZ001M	1 meter, aqua
OR-P3DG8LPAZAZ002M	2 meters, aqua
OR-P3DG8LPAZAZ003M	3 meters, aqua

Notes: \*A-B patch cords reverse the fiber positions.

### Premium Performance Laser Optimized (50/125) OM4 LC-PC OFNP (A-A\*)

PART NO.	DESCRIPTION
OR-P3RG8LPAZAZ001M	1 meter, aqua
OR-P3RG8LPAZAZ002M	2 meters, aqua
OR-P3RG8LPAZAZ003M	3 meters, aqua

Notes: \*A-A patch cords do not reverse the fiber positions.

### Premium Performance Laser Optimized (50/125) OM4 RLC-PC OFNP (Ships A-B)

PART NO.	DESCRIPTION
OR-P3DG8LPWZWZ001M	1 meter, aqua
OR-P3DG8LPWZWZ002M	2 meters, aqua
OR-P3DG8LPWZWZ003M	3 meters, aqua

### Premium Performance Laser Optimized (50/125) OM3 LC-PC OFNP (A-B\*)

PART NO.	DESCRIPTION
OR-P3DF8LPAZAZ001M	1 meter, aqua
OR-P3DF8LPAZAZ002M	2 meters, aqua
OR-P3DF8LPAZAZ003M	3 meters, aqua

Notes: \*A-B patch cords reverse the fiber positions.

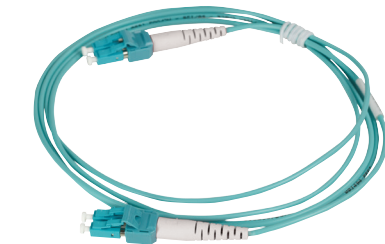
### Premium Performance Laser Optimized (50/125) OM3 LC-PC OFNP (A-A\*)

PART NO.	DESCRIPTION
OR-P3RF8LPAZAZ001M	1 meter, aqua
OR-P3RF8LPAZAZ002M	2 meters, aqua
OR-P3RF8LPAZAZ003M	3 meters, aqua

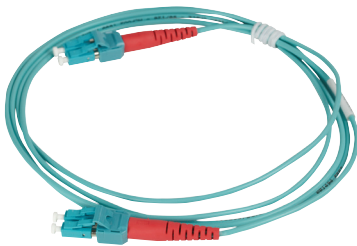
Notes: \*A-A patch cords do not reverse the fiber positions.

### Premium Performance Laser Optimized (50/125) OM3 RLC-PC OFNP (Ships A-B)

PART NO.	DESCRIPTION
OR-P3DF8LPWZWZ001M	1 meter, aqua
OR-P3DRF8LPWZWZ002M	2 meters, aqua
OR-P3DF8LPWZWZ003M	3 meters, aqua



OR-P3DF8LPAZAZ001M



OR-P3RF8LPAZAZ001M

# INFINIUM™ PATCH CORDS

## Fiber Optic Cable Assemblies – SpaceSaver

### Standard Performance Laser Optimized (50/125) OM4 LC-PC OFNP (A-B\*)

PART NO.	DESCRIPTION
OR-P0DG8LPAZAZ001M	1 meter, aqua
OR-P0DG8LPAZAZ002M	2 meters, aqua
OR-P0DG8LPAZAZ003M	3 meters, aqua

Notes: \*A-B patch cords reverse the fiber positions.

### Standard Performance Laser Optimized (50/125) OM4 LC-PC OFNP (A-A\*)

PART NO.	DESCRIPTION
OR-P0RG8LPAZAZ001M	1 meter, aqua
OR-P0RG8LPAZAZ002M	2 meters, aqua
OR-P0RG8LPAZAZ003M	3 meters, aqua

Notes: \*A-A patch cords do not reverse the fiber positions

### Standard Performance Laser Optimized (50/125) OM4 RLC-PC OFNP (Ships A-B)

PART NO.	DESCRIPTION
OR-P0DG8LPWZYZ001M	1 meter, aqua
OR-P0DG8LPWZYZ002M	2 meters, aqua
OR-P0DG8LPWZYZ003M	3 meters, aqua

### Standard Performance Laser Optimized (50/125) OM3 LC-PC OFNP (A-B\*)

PART NO.	DESCRIPTION
OR-P0DF8LPAZAZ001M	1 meter, aqua
OR-P0DF8LPAZAZ002M	2 meters, aqua
OR-P0DF8LPAZAZ003M	3 meters, aqua

Notes: \*A-B patch cords reverse the fiber positions.

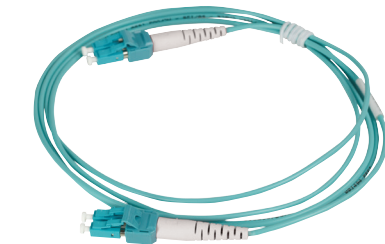
### Standard Performance Laser Optimized (50/125) OM3 LC-PC OFNP (A-A\*)

PART NO.	DESCRIPTION
OR-P0RF8LPAZAZ001M	1 meter, aqua
OR-P0RF8LPAZAZ002M	2 meters, aqua
OR-P0RF8LPAZAZ003M	3 meters, aqua

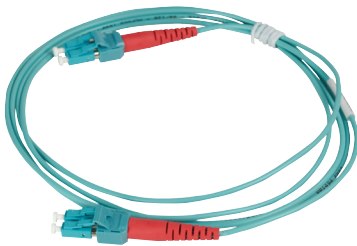
Notes: \*A-A patch cords do not reverse the fiber positions.

### Standard Performance Laser Optimized (50/125) OM3 RLC-PC OFNP (Ships A-B)

PART NO.	DESCRIPTION
OR-P0DF8LPWZYZ001M	1 meter, aqua
OR-P0DF8LPWZYZ002M	2 meters, aqua
OR-P0DF8LPWZYZ003M	3 meters, aqua



OR-P0DG8LPAZAZ001M



OR-P0RG8LPAZAZ001M

# INFINIUM™ PATCH CORDS

## Fiber Optic Cable Assemblies – SpaceSaver

### Standard Performance Single-Mode OS2 LC-UPC OFNP (A-B\*)

PART NO.	DESCRIPTION
OR-P0DC8IPUZUZ001M	1 meter, yellow
OR-P0DC8IPUZUZ002M	2 meter, yellow
OR-P0DC8IPUZUZ003M	3 meter, yellow

Notes: \*A-B patch cords reverse the fiber positions.

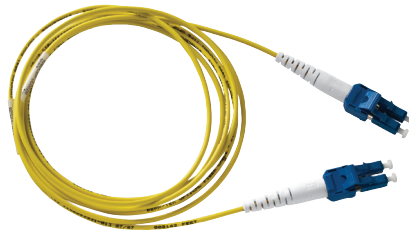
### Standard Performance Single-Mode OS2 LC-UPC OFNP (A-A\*)

PART NO.	DESCRIPTION
OR-P0RC8IPUZUZ001M	1 meter, yellow
OR-P0RC8IPUZUZ002M	2 meter, yellow
OR-P0RC8IPUZUZ003M	3 meter, yellow

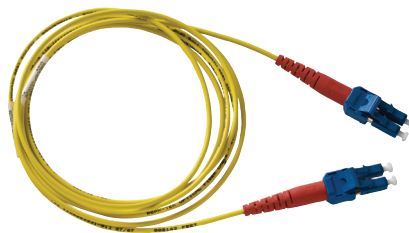
Notes: \*A-A patch cords do not reverse the fiber positions.

### Standard Performance Single-Mode OS2 RLC-UPC OFNP (Ships A-B)

PART NO.	DESCRIPTION
OR-P0DC8IPPZPZ001M	1 meter, yellow
OR-P0DC8IPPZPZ002M	2 meter, yellow
OR-P0DC8IPPZPZ003M	3 meter, yellow



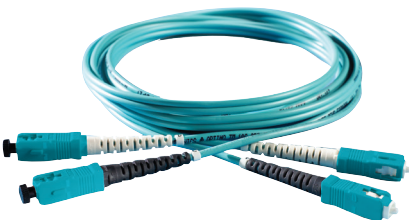
OR-P0DC8IPUZUZ001M



OR-P0RC8IPUZUZ001M



OR-P3DG2LRGZGZ001M



OR-P3DG2LRFZGZ001M

## Patch Cords – 2 mm Zip Cord

### Premium Performance Laser Optimized (50/125) OM4 LC-PC TO LC-PC OFNR

PART NO.	DESCRIPTION
OR-P3DG2LRGZGZ001M	1 meter, aqua
OR-P3DG2LRGZGZ002M	2 meters, aqua
OR-P3DG2LRGZGZ003M	3 meters, aqua

### Premium Performance Laser Optimized (50/125) OM4 SC-PC TO SC-PC OFNR

PART NO.	DESCRIPTION
OR-P3DG2LRFZGZ001M	1 meter, aqua
OR-P3DG2LRFZGZ002M	2 meters, aqua
OR-P3DG2LRFZGZ003M	3 meters, aqua

### Premium Performance Laser Optimized (50/125) OM4 SC-PC TO LC-PC OFNR

PART NO.	DESCRIPTION
OR-P3DG2LRFZGZ001M	1 meter, aqua
OR-P3DG2LRFZGZ002M	2 meters, aqua
OR-P3DG2LRFZGZ003M	3 meters, aqua

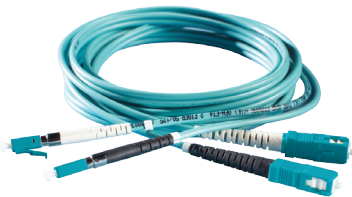
# INFINIUM™ PATCH CORDS



OR-P0DG2LRGZGZ001M



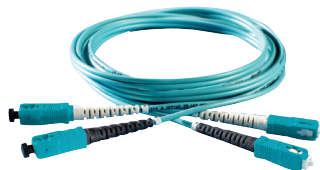
OR-P0DG2LRFZGZ001M



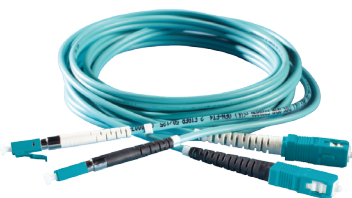
OR-P0DG2LRFZGZ001M



OR-P3DF2LRGZGZ001M



OR-P3DF2LRFZGZ001M



OR-P3DF2LRFZGZ001M

## Patch Cords – 2 mm Zip Cord

### Standard Performance Laser Optimized (50/125) OM4 LC-PC TO LC-PC OFNR

PART NO.	DESCRIPTION
OR-P0DG2LRGZGZ001M	1 meter, aqua
OR-P0DG2LRGZGZ002M	2 meters, aqua
OR-P0DG2LRGZGZ003M	3 meters, aqua

### Standard Performance Laser Optimized (50/125) OM4 SC-PC TO SC-PC OFNR

PART NO.	DESCRIPTION
OR-P0DG2LRFZGZ001M	1 meter, aqua
OR-P0DG2LRFZGZ002M	2 meters, aqua
OR-P0DG2LRFZGZ003M	3 meters, aqua

### Standard Performance Laser Optimized (50/125) OM4 SC-PC TO LC-PC OFNR

PART NO.	DESCRIPTION
OR-P0DG2LRFZGZ001M	1 meter, aqua
OR-P0DG2LRFZGZ002M	2 meters, aqua
OR-P0DG2LRFZGZ003M	3 meters, aqua

### Premium Performance Laser Optimized (50/125) OM3 LC-PC TO LC-PC OFNR

PART NO.	DESCRIPTION
OR-P3DF2LRGZGZ001M	1 meter, aqua
OR-P3DF2LRGZGZ002M	2 meters, aqua
OR-P3DF2LRGZGZ003M	3 meters, aqua

### Premium Performance Laser Optimized (50/125) OM3 SC-PC TO SC-PC OFNR

PART NO.	DESCRIPTION
OR-P3DF2LRFZGZ001M	1 meter, aqua
OR-P3DF2LRFZGZ002M	2 meters, aqua
OR-P3DF2LRFZGZ003M	3 meters, aqua

### Premium Performance Laser Optimized (50/125) OM3 SC-PC TO LC-PC OFNR

PART NO.	DESCRIPTION
OR-P3DF2LRFZGZ001M	1 meter, aqua
OR-P3DF2LRFZGZ002M	2 meters, aqua
OR-P3DF2LRFZGZ003M	3 meters, aqua

designed to be better.™

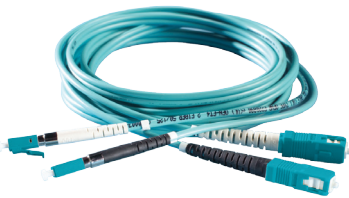
# INFINIUM™ PATCH CORDS



OR-P0DF2LRGZGZ001M



OR-P0DF2LRFZFZ001M



OR-P0DG2LRFZGZ001M



OR-P0DC2IRSZSZ001M



OR-P0DC2IRRZRZ001M

## Patch Cords – 2 mm Zip Cord

### Standard Performance Laser Optimized (50/125) OM3 LC-PC TO LC-PC OFNR

PART NO.	DESCRIPTION
OR-P0DF2LRGZGZ001M	1 meter, aqua
OR-P0DF2LRGZGZ002M	2 meters, aqua
OR-P0DF2LRGZGZ003M	3 meters, aqua

### Standard Performance Laser Optimized (50/125) OM3 SC-PC TO SC-PC OFNR

PART NO.	DESCRIPTION
OR-P0DF2LRFZFZ001M	1 meter, aqua
OR-P0DF2LRFZFZ002M	2 meters, aqua
OR-P0DF2LRFZFZ003M	3 meters, aqua

### Standard Performance Laser Optimized (50/125) OM3 SC-PC TO LC-PC OFNR

PART NO.	DESCRIPTION
OR-P0DF2LRFZGZ001M	1 meter, aqua
OR-P0DF2LRFZGZ002M	2 meters, aqua
OR-P0DF2LRFZGZ003M	3 meters, aqua

### Standard Performance Single-Mode OS2 LC-UPC TO LC-UPC OFNR

PART NO.	DESCRIPTION
OR-P0DC2IRSZSZ001M	1 meter, yellow
OR-P0DC2IRSZSZ002M	2 meter, yellow
OR-P0DC2IRSZSZ003M	3 meter, yellow

### Standard Performance Single-Mode OS2 SC-UPC TO SC-UPC-OFNR

PART NO.	DESCRIPTION
OR-P0DC2IRRZRZ001M	1 meter, yellow
OR-P0DC2IRRZRZ002M	2 meter, yellow
OR-P0DC2IRRZRZ003M	3 meter, yellow

### Standard Performance Single-Mode OS2 SC-UPC TO LC-UPC OFNR

PART NO.	DESCRIPTION
OR-P0DC2IRRZSZ001M	1 meter, yellow
OR-P0DC2IRRZSZ002M	2 meter, yellow
OR-P0DC2IRRZSZ003M	3 meter, yellow

# INFINIUM™ PATCH CORDS

## Array Cords

Array cords are the patch cords used in parallel optics systems. Since the switch gear utilizes MTP®/MPO connectors, the array cord is a 12 or 24 fiber MTP-to-MTP cable. Since the switch port has a male, pinned MPO connection and the trunk cable connector is typically female (unpinned), the array cord may be unpinned on one end and pinned on the other. Other MTP polarity and gender options are available.

Legrand Infinium array cords utilize small diameter microarray interconnect cable and 12 or 24-fiber MTP plugs.



OR-A3AMPLAGAB001M

### MTP-MTP 12 and 24 Fiber Array Cords

#### Laser Optimized (50/125) OM4 MTP-MTP OFNP Type A

PART NO.	DESCRIPTION
OR-A3AMPLAGAB001M	12F OM4 Female to Male 1M Type A
OR-A3AMPLAGAA001M	12F OM4 Female to Female 1M Type A
OR-A3AMPLBGAB001M	24F OM4 Female to Male 1M Type A
OR-A3AMPLBGAA001M	24F OM4 Female to Female 1M Type A

#### Laser Optimized (50/125) OM3 MTP-MTP OFNP Type A

PART NO.	DESCRIPTION
OR-A3AMPLAFAB001M	12F OM3 Female to Male 1M Type A
OR-A3AMPLAFAA001M	12F OM3 Female to Female 1M Type A
OR-A3AMPLBFAB001M	24F OM3 Female to Male 1M Type A
OR-A3AMPLBFAA001M	24F OM3 Female to Female 1M Type A

\*MTP® is a registered trademark of US Conec Ltd.