

U.S. SYSTEM DATA SHEET

ATLAS-X1™ CAT 6A SHIELDED SYSTEM

Ideal for applications that require the most advanced Cat 6A performance with added signal isolation

- Exceeds ANSI/TIA-568-C.2 Cat 6A and ISO/IEC 11801 Class E_A requirements for channel, link, and component requirements to support IEEE 10GBASE-T (802.3an) networks
- Limited lifetime warranty available when projects are installed by Leviton or Berk-Tek certified contractors
- Third-party verified by Intertek Testing Services (ETL)
- Assures excellent alien crosstalk (AXT) and EMI/RFI immunity, with margin guarantees
- Error-free performance up to 10 Gigabit Ethernet with full duplex transmission
- Backwards compatible with Gigabit Ethernet to provide seamless migration path to 10GBASE-T and supports all Cat 6 and Cat 5e system requirements
- Atlas-X1™ connector is independently tested to exceed performance standards and features an innovative design that allows for tool-free terminations

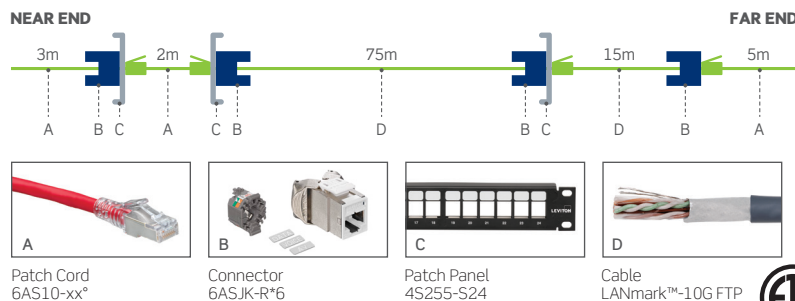
GUARANTEED* SYSTEM PERFORMANCE

ATLAS-X1 CAT 6A SHIELDED SYSTEM CHANNEL MARGIN GUARANTEES*									
Insertion Loss	NEXT	PSNEXT	ACR-F (ELFEXT)	PSACR-F (PSELFEXT)	Return Loss	ACR-N	PSACR-N	PSANEXT	PSAACR-F
3%	4 dB	6 dB	8 dB	8 dB	3 dB	7 dB	8 dB	16 dB	16 dB

*Values represent guaranteed margins to ANSI/TIA-568-C.2 standard. All parameters comply with ANSI/TIA-568-C.2 Cat 6A and ISO/IEC 11801 Class E_A requirements across the entire frequency range. All values represent worst-case margins for 5- to 100-meter channel configurations. System performance margin guarantees are representative of the specific components and topologies as listed on the CS6700 solution data sheet and third-party test report. Contact your Berk-Tek Leviton Technologies technical representative for more information on alternative components and channel configurations. Details at berktekleviton.com.

Product and Performance Warranties and System Guarantees apply exclusively when the system is installed and tested by Leviton Network Solutions Certified Contractors, or Berk-Tek Certified OASIS Integrators. All Terms and Conditions of Leviton and Berk-Tek warranty programs apply.

SYSTEM ELEMENTS



The Atlas-X1 Cat 6A Shielded System aligns with the Berk-Tek Leviton Technologies Solution Data Sheet CS6700

RECOMMENDED FOR

10GBASE-T network applications and mission-critical systems

Data center channel configurations from 9 to 100 meters

Data center applications including computer clusters and end-of-row architectures

Optimized total cost of ownership for financial, health care, government, transportation, and education environments

Network applications where EMI/RFI may be present and data security is critical

Networks with high bandwidth utilization requirements

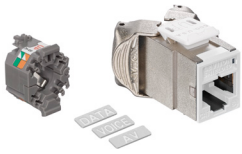
Government NIPRNET and SIRPNET protocols

Power over Ethernet and PoE+ applications up to and beyond 30 watts

AV systems for high-end conference rooms and classrooms

IEEE 802.11ac applications

Cat 6A
Atlas-X1
Shielded



LEVITON CONNECTORS

ATLAS-X1™ CAT 6A SHIELDED QUICKPORT® CONNECTORS

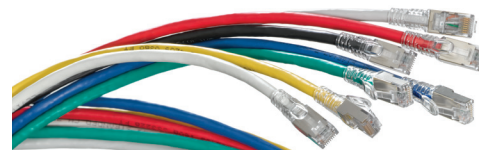
- Independently tested and guaranteed to exceed all component, permanent link, and channel margins
- Patented Retention Force Technology (RFT) protects against time damage from 4- or 6-pin plugs
- Connectors available with internal shutter to protect against dust and debris
- Unique, tool-free design requires no specialized termination or re-termination tool
- Short connector design supports a wider range of applications (e.g. shallow boxes, enclosures, bend radius, etc.)
- Connector supplied with interchangeable icons (VOICE, DATA, AV, and blank) color coded to match the connector face
- Interchangeable icons (available in 13 colors) make it easy to identify and track data, voice, or other functions
- Proudly manufactured in the U.S.



LEVITON PATCH PANELS

ATLAS-X1 CAT 6A SHIELDED QUICKPORT PATCH PANELS

- Meet ANSI/TIA-568-C.2 and ISO/IEC 11801
- Stainless-steel "comb" maintains consistent ground path between connector and panel
- Available in QuickPort 1RU 24-port and 2RU 48-port angled configurations
- Accepts all shielded QuickPort connectors
- Shielding protects against Electromagnetic Interference (EMI) and Radio Frequency Interference (RFI), and provides excellent alien crosstalk (AXT) suppression



LEVITON PATCH CORDS

ATLAS-X1 CAT 6A SLIMLINE SHIELDED PATCH CORDS

- Cable construction provides data security and EMI/RFI protection
- ETL Verified for TIA Cat 6A component and channel requirements
- Nominal outer diameter of .24" to reduce cable pathway congestion in racks and cabinets
- 26-gauge stranded for maximum flexibility in any density patching environment
- SlimLine boot supports high-density patching and easy extraction with extended-reach latch release
- Snagless boot design prevents tab breakage during moves, adds, and changes
- Excellent alien crosstalk (AXT) suppression
- Country of Origin is U.S., manufactured using Berk-Tek cable



BERK-TEK CABLE

LANMARK™ - 10G FTP CABLE

- Single overall foil shield for smaller outside diameter of 0.280" (7.1mm)
- Reduced cable termination time and material costs when compared to pair-shielded cable designs
- Increased signal isolation prevents contaminant noise from entering cabling system
- Lower bit errors resulting in increased network performance
- ETL verified to ANSI/TIA-568-C.2 Category 6A
- Can be used with RJ-45 style F/UTP connectivity
- UL/ETL Listed
- 23 gauge
- Proudly manufactured in the U.S.

PART NUMBERS - Common part numbers shown. Many additional colors, lengths, and other options available online.

LEVITON CONNECTORS	STANDARD	SHUTTERED	ADDITIONAL ICONS
Atlas-X1 Cat 6A Shielded QuickPort Connector	6ASJK-R*6	6ASJK-S*6	ICONS-IC*
LEVITON PATCH PANELS	1RU, 24-PORT	1RU, 48-PORT	2RU, 48-PORT
Atlas-X1 Flat Shielded QuickPort Patch Panel+	4S255-S24	4S255-D48	4S255-S48
Atlas-X1 Angled Shielded QuickPort Patch Panel+	4S256-S24	4S256-D48	4S256-S48
LEVITON PATCH CORDS			6AS10-xx*
Atlas-X1 Cat 6A SlimLine Patch Cord			
BERK-TEK CABLE		PLENUM REEL	RISER REEL
LANmark-10G FTP, Red		10188969	10189804
LANmark-10G FTP, Black		10189549	11077196
LANmark-10G FTP, Grey		10167487	10189798

* = Connector Color: White (W), Lt. Almond (T), Ivory (I), Yellow (Y), Orange (O), Crimson (C), Dark Red (R), Purple (P), Blue (L), Green (V), Grey (G), Black (E), Brown (B)
 + = Sold empty, load with 6ASJK connectors
 xx = Length: 3, 5, 7, 10, 15, 20 feet * = Color: White (W), Yellow (Y), Blue (L), Black (E), Red (R), Green (G), Grey (S)