



**GREENLEE®**  
COMMUNICATIONS

**A full suite of fiber-optic  
instruments and tools  
for your A-CAM eligible  
projects.**

# **FIBER from Start to Finish**

Install. Terminate. Test. Troubleshoot.

# FIBER OPTIC SOLUTIONS

From the start of a Fiber network to the end, Greenlee Communications branded equipment goes beyond just tools. We provide tools and testing equipment to install, terminate, test and troubleshoot fiber optic networks. Our mission is to ensure confidence in the results, reliability in the equipment and productivity for your team. By melding innovation and invention, Greenlee Communications can also partner with you when you are renting equipment and by ensuring your investment is backed by our Emerald 360 program. You can rely on a brand that was built on hard work by people who know fiber.



## Ultimaz™ P2P Fiber Drop Placing System

- Pushes/Jets cables 5.8mm to 10.5mm in diameter
- Installs cables in Microducts 7mm-18mm and OSP duct up to 1 ¼" ID
- Installs round or flat drop cables
- Most portable handheld at 3 ½ lbs with air assist in microducts
- Installs cables up to 6 x faster than pulling

## 910FS Core Alignment Optical Fusion Splicer

- Designed to meet virtually any FTTx installation – indoors and out
- P2P installations including backhaul, cellular, and LAN
- Minimizes splice losses
- Fully compatible with Greenlee® Splice-On Connectors
- 250 Splice / Shrink cycles per battery charge
- Only splicer technology capable of splicing loose tube fibers to Splice-On Connectors







### MiniJet™ Pneumatic Cable Placing System

- Installs cables 4mm to 16mm in diameter
- Installs cable in microducts 7mm to 22mm and OSP duct up to 1 ¼" ID
- No hydraulics, batteries or electricity required
- Microduct bundle capability
- Quick – Track change feature



### Cablejet® Cable Placing System

- Utilizes balance between low-strain pushing force and high speed air flow
- Pneumatic drive motor
- New 7-9 drive system for microcables
- Can negotiate up to twenty 90° bends with only a 20% loss in efficiency
- Two sturdy light-weight aluminum carry cases containing jet and accessories included

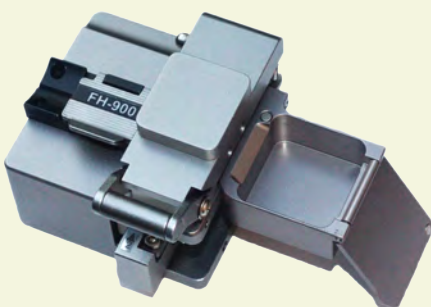


### SuperJet™

- Available in hydraulic or pneumatic powered models
- Placing speeds 200- 300 FPM
- Cables from .50" to 1.25"
- Ducts from 3/4" ID to 2" ID

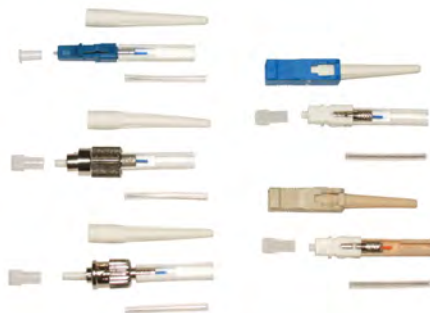
### 910CL Optical Fiber Cleaver

- Cleave Multimode and Singlemode fiber optic cables
- Over 48,000 cleaves
- Supports 250um, 900um fibers
- For use with the 910FS Optical Fusion Splicer for maximum speed and efficiency
- Dust bin. Safely collects end cuts during cleaving process



### Splice-on Connectors

- Saves time. Factory-terminated connectors eliminate the need to cleave
- Easy to use. 900µm fiber stub for easy splices every time
- Cost-effective. Reduce rework. Get the job done faster and easier



### Fiber Cleaning Pens

#### FCP-2.5mm FCP-1.25mm

- Cleans 2.5mm & 1.25 mm ferrules and bulkheads
- Compact, easy-to-use single click operation
- Rated for 800 cleaning cycles
- Anti-static design prevents secondary contamination





## 915FS Active Clad Optical Fusion Splicer

- Economically terminate FTTH installations
- IP52 rating for the most demanding environments
- Lightweight and compact allows for splicing in physically challenging spaces - smallest & lightest in its class!
- Outperforms V-Groove splicer technology with three axis alignment
- Only splicer technology capable of splicing loose tube fibers to Splice-On Connectors



## 915CL Optical Fiber Cleaver

- Cleave Multimode and Singlemode fiber optic cables
- Over 48,000 cleaves
- Adaptable. Supports 250um, 900um fibers and loose tube fibers
- Auto return mechanism
- Dust bin. Safely collects end cuts during cleaving process
- Fixed clamp. Allows the technician to use the 915CL as a standalone cleaver

## GVIS300C Video Inspection System

- Confirm network and device performance features
- All common bulkheads are supported
- Universal bulkhead on optical power meters
- USB download on the GRP 460
- 2kHz tone output on all sources
- Active detector feedback ensures stable output power



## GVIS300 Video Inspection System

- $\frac{3}{4}$   $\mu$ m scratch resolution
- Unique focusing mechanism eliminates need for "focus wheel"
- 135x magnification
- FOV 630 $\mu$ m x 440 $\mu$ m
- 90mm LCD display
- Li Ion Battery & smart technology AC charger system
- Quick change adapter tips for all connector styles





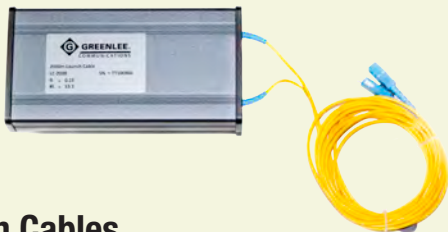
## GVIS400/GPAD255B Digital Video Inspection System

- Automatic or manual Pass/Fail analysis (IEC 61300-3-35)
- Hands-free voice commands
- Field of View 800µm x 600µm
- Stream power measurements from GRP460
- Generate reports
- High Definition Image



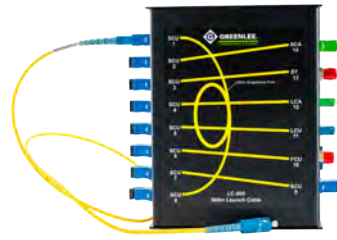
## 930XC Optical Time-Domain Reflectometer

- All in one handheld solution
- One button test functions
- Tests fibers without disrupting live services
- Up to 38 dB dynamic range
- Long life battery– up to 8 hours continuous use.
- Rugged construction. Drop-tested from 2m, impact resistant and built to perform
- Multimode and Singlemode versions
- 1m deadzone



## Launch Cables

- 500m, 1000m & 2000m Singlemode
- 150m Multimode
- Ruggedized case
- SC termination with LC adapters available



## LC-500 Universal OTDR Launch Cable

- Minimizes the effects of OTDR deadzones
- 500m cable length
- Universal; all common connectors are simultaneously supported



## Optical Power Meters

### GRP450/460 GUPM100 (USB)

- Referenced & Absolute optical power readings
- USB connection for GIS, DataManager and Sidekick applications
- Multimode and Singlemode operation
- +6 to -70dB measurement range (InGaAs)
- +23 to -45dB measurement range (Filtered InGaAs)
- Calibrated at 850nm, 1300nm, 1310nm, 1490nm, 1550nm, 1611nm and 1625nm

## Optical Light Sources

### GDLS355 1310/1550nm Laser GDLS360 1490/1550nm Laser GDLS350 850/1300nm LED

- Stable, calibrated output
- 2kHz Tone output
- NIST Traceable
- Long battery life
- Rugged and compact size
- Multimode and Singlemode wavelength options





## EMI Shielded XL fiberTOOLS®

**560XL OPM**

**570XL LED Source (850/1300nm)**

**580XL Laser Source (1310/1550nm)**

- EMI Performance: MIL-STD-461E
- Easy to use - three buttons control all functions
- Rugged, splash-proof design
- Engineered for use in areas with high electrical interference
- Stores and recalls reference power levels for faster, more efficient measurements
- Non EMI versions available



## 180XL Visual Fault Locator

- Visually locate losses and macrobends
- 7km range
- Pulsed and CW Modes
- Safe Class 1 operation



## FI-100 Fiber Identifier

- Low insertion loss. Non-intrusive low insertion loss prevents alarm conditions
- Easy operation. Identifies fiber with tone detect and a clear indication of signal transmission direction
- Versatile. Supports all common fibers including 250µm, 900µm, 2mm, and 3mm and is able to sense light in bend insensitive fibers

## Fiber Hand Tools



**ProGrip 5 in 1  
Fiber Optic Stripper**  
PA1171



**ProGrip 3 in 1  
Fiber Optic Stripper**  
PA1177



**Universal Slitter**  
PA1822



**Economy Kevlar Cutter**  
PA1511



**Economy Fiber  
Optic Stripper**  
PA1162



**Mid Span Slitter**  
MSS100



[www.greenleecommunications.com](http://www.greenleecommunications.com)

1390 Aspen Way  
Vista, CA 92081 USA  
1-800-642-2155

Greenlee Textron Inc. is a subsidiary of Textron Inc.  
©2017 Greenlee Textron Inc.  
MA6669 - Printed in USA