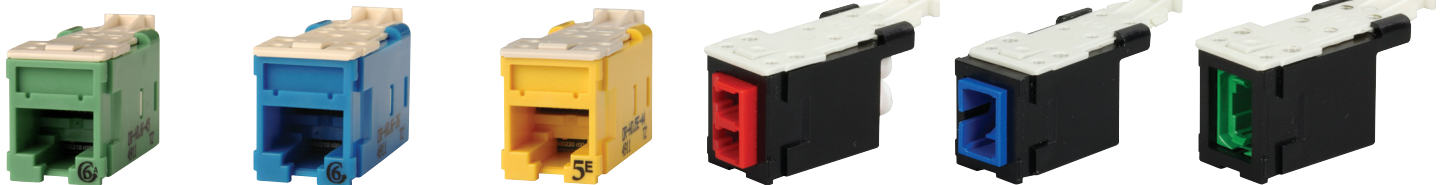


ORTRONICS®



HIGH DENSITY CONNECTIVITY

MAXIMIZE YOUR
CABLING DENSITY,
REDUCE YOUR
FOOTPRINT, ENABLE
MIXED MEDIA



designed to be better.™



High Density Solution With Clarity® and Infinium™

Legrand® high density patented, recessed angled modular patch panels combine with Legrand vertical cable managers to provide up to quadruple the density of standard panels with horizontal cable managers. You can also easily combine and readily swap out copper and fiber elements in the same patch panel.

Legrand's high density Clarity jack and panel products (HDJ) combined with Infinium high density fiber (HDFMs) solve density challenges without sacrificing performance. The smaller HDJ jack footprint allows up to 48-ports of premium Category 6a, 6 or 5e performance or HDFMs (LC, SC, and MPO) in 1 rack unit panel. This system is ideal for applications like data centers, distribution areas (TIA-942 Standard) or limited space, high density environments.

The new high density jack and panel series provides:

- Less required rack and floor space to reduce real-estate costs
- A nearly transparent signal path, when used with Clarity patch cords, for enhanced network performance
- New cable termination process that is easier and faster for Category 6a and 6
- A new slide-lock mounting for a quicker installation time that reduces labor costs, while locking the jacks firmly in place
- Flexibility by combining copper and fiber in the same panel

The greater rack unit density, made possible with the smaller jack footprint, is supported by superior cable management products that have been optimized for cable protection and proper airflow. Mighty Mo® cable managers allow up to 48 patch cords per rack unit on a single side of the rack or cabinet, providing ample support to Clarity and Infinium high density solutions.



High Density Jack Panels

These unloaded panels provide up to 48-ports in a single rack unit, supporting the high density family with flat and angled panels. Panel choices include 24-port (1RU), 48-port (1RU), 48-port (2RU) and 72-port (2RU). All panels are supplied with front labeling bezels, rear cable management bars, straps and ties.

- Support up to 48-port in 1RU
- Ability to configure with choice performance categories and colors
- Compatible with copper jacks and fiber modules for mixed media and future upgrades
- Easier to access, remove and install into loaded panels
- Angled panels offer additional bend radius protection for patch cords as they route to vertical pathways
- Supplied rear management support and protect cable terminations
- High density jacks are icon compatible or supplied 6 port front label fields snap into icon slots

High Density Panels

PART NO.	DESCRIPTION
OR-PHAHJU24	24-port angled HDJ jack panel, unloaded 1.75" x 19", 1 RU
OR-PHAHJU48	48-port angled HDJ jack panel, unloaded 1.75" x 19", 1 RU
OR-PHAHJU72	72-port angled HDJ jack panel, unloaded 3.5" x 19", 2 RU
OR-PHDHJU24	24-port flat HDJ jack panel, unloaded 1.75" x 19", 1 RU
OR-PHDHJU48	48-port flat HDJ jack panel, unloaded 1.75" x 19", 1 RU
OR-PHDHJU72	72-port flat HDJ jack panel, unloaded 3.5" x 19", 2 RU

Standard Density Panels

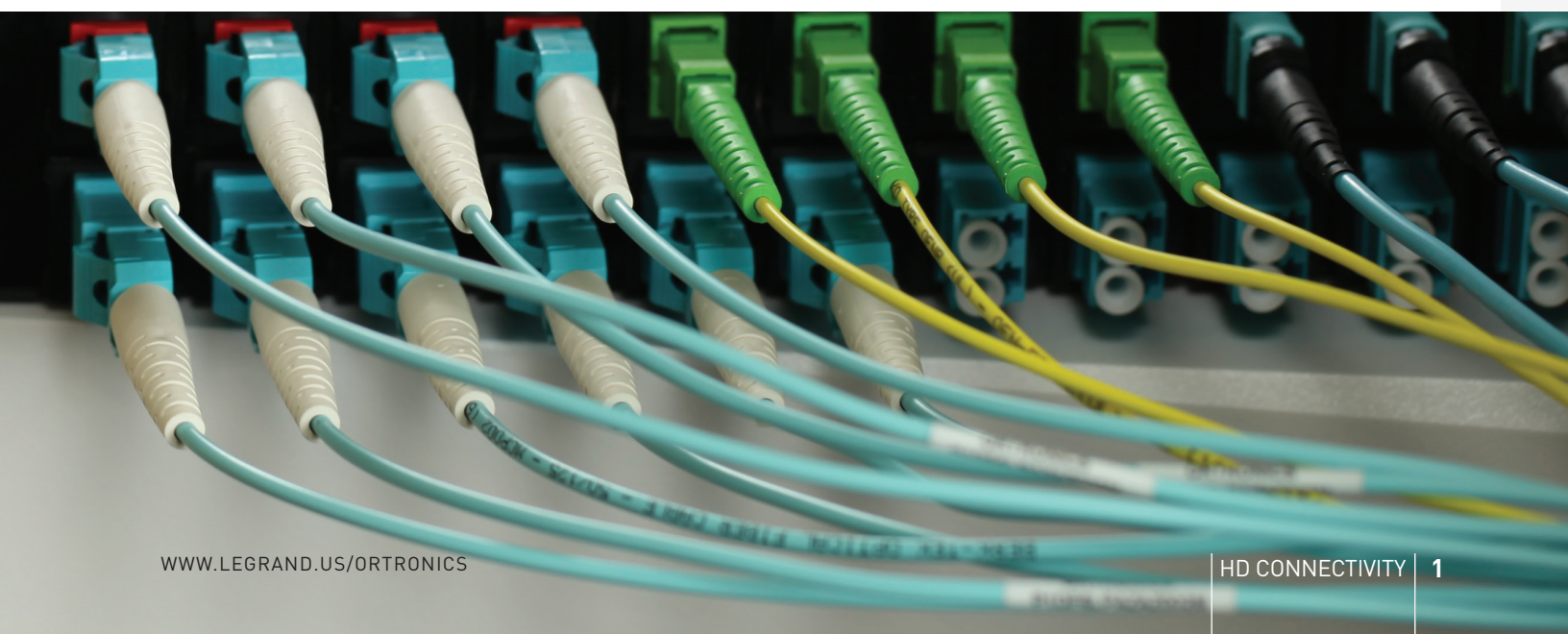
PART NO.	DESCRIPTION
OR-PSAHJU48	48-port angled HDJ jack panel, unloaded 3.5" x 19", standard height, 2 RU
OR-PSDHJU48	48-port flat HDJ jack panel, unloaded 3.5" x 19", standard height, 2 RU



OR-PHAHJU48



OR-PHDHJU48



High Density Jacks

Clarity 6A, 6 and 5E

Clarity® High Density Jacks incorporate patent pending mechanical and electrical advancements to provide greater performance headroom and an easier termination method. The easy to lace and crimp termination reduces time to install, while maintaining cable performance. Termination of all 8 conductors with one crimp is easy using either HDJ crimping tools. The HDJ jacks are available in Category 6a, 6 and 5e with Clarity technology that elevates a channel performance. These jacks are rear loading, utilizing an innovative locking latch for quick reliable mounting and removal.

Features:

- Support up to 48 ports in a 1 rack unit panel, and workstation mountings
- Center tuned to Clarity patch cords for optimal channel performance
- ETL verified to TIA 568C.2 Category 6a and Category 6 component performance standards
- Quick termination and installation time
- FCC part 68, Subpart F and IEC-603-7 compliant
- Gas tight insulation displacement of 22 to 24 AWG solid copper conductors

PART NO.	DESCRIPTION
OR-HDJ6A	Clarity HDJ Category 6a jack, 8-position, T568A/B, fog white
OR-HDJ6	Clarity HDJ Category 6 jack, 8-position, T568A/B, fog white
OR-HDJ5E	Clarity HDJ Category 5e jack, 8-position, T568A/B, fog white

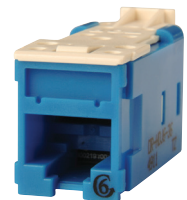
Notes: For other colors add one of the following suffixes: -00 black, -36 blue, -42 red, -43 orange, -44 yellow, -45 green, -88 white, 13 ivory, -27 violet, -78 gray

PART NO.	DESCRIPTION
OR-HDJ6A25	Clarity HDJ Category 6a, 8-position, T568A/B, 25 pk, fog white
OR-HDJ625	Clarity HDJ Category 6, 8-position, T568A/B, 25 pk, fog white

Notes: For other colors add one of the following suffixes: -00 black, -36 blue, -45 green, -88 white



OR-HDJ6A-42



OR-HDJ6-36



OR-HDJ5E-44

HDJ Crimping Tools

The HDJ crimping tools work with the jack's easy to lace wiring cap, making the crimp process quick and consistently aligned for an even greater time savings when terminating cable.

PART NO.	DESCRIPTION
OR-HDJHCT	HDJ handled crimping tool
OR-HDJPCT	Hand tool supplied in each full carton of HDJ jacks



OR-HDJHCT



OR-HDJPCT

Infinium™ High Density Fiber Modules

Fitted in a black housing, infinium HDFM are available in LC duplex, SC simplex and MPO. LC duplex and SC adapters are available in aqua, blue, green, beige, red and yellow. MPO adapters are available in aqua, green, beige, black, red, blue and magenta.

PART NO.	DESCRIPTION
OR-HDFM-FLC2CL-00	HD fiber module, duplex LC, aqua
OR-HDFM-FLC2CA-00	HD fiber module, duplex LC, blue
OR-HDFM-FLC2CC-00	HD fiber module, duplex LC, green
OR-HDFM-FLC2CM-00	HD fiber module, duplex LC, beige
OR-HDFM-FLC2CG-00	HD fiber module, duplex LC, red
OR-HDFM-FLC2CI-00	HD fiber module, duplex LC, yellow
OR-HDFM-FSC1CL-00	HD fiber module, simplex SC, aqua
OR-HDFM-FSC1CA-00	HD fiber module, simplex SC, blue
OR-HDFM-FSC1CC-00	HD fiber module, simplex SC, green
OR-HDFM-FSC1CM-00	HD fiber module, simplex SC, beige
OR-HDFM-FSC1CG-00	HD fiber module, simplex SC, red
OR-HDFM-FSC1CI-00	HD fiber module, simplex SC, yellow
OR-HDFM-FMTZNL-00	HD fiber module, MPO, aqua
OR-HDFM-FMTZNC-00	HD fiber module, MPO, green
OR-HDFM-FMTZNM-00	HD fiber module, MPO, beige
OR-HDFM-FMTZNH-00	HD fiber module, MPO, black
OR-HDFM-FMTZNN-00	HD fiber module, MPO, magenta
OR-HDFM-FMTZNG-00	HD fiber module, MPO, red
OR-HDFM-FMTZNA-00	HD fiber module, MPO, blue
OR-HDFM-FMTZNE-00	HD fiber module, MPO, gray aligned key

Notes: For other colors add one of the following suffixes: -00 black, -36 blue, -42 red, -43 orange, -44 yellow, -45 green, -88 white, 13 ivory, -27 violet, -78 gray



OR-HDFM-FSC1CA-00



OR-HDFM-FLC2CG-00



OR-HDFM-FMTZNC-00

Infinium High Density Fiber Cassettes

Spanning 6-positions in the HD patch panel, the MTP®-to-LC 12-fiber cassette is available with 50-micron laser optimized (OM4+) fiber or with single-mode (OS2) fiber.

PART NO.	DESCRIPTION
OR-HDCA6LC12AH	HD cassette assembly, 50 LOMF, 12F, 1-MTP-PC (M), 6-LC-PC duplex
OR-HDCA6LC12AJ	HD cassette assembly, single-mode, 12F, 1-MTP-APC (M), 6-LC-UPC duplex

Notes: MTP-to-MTP cassette assemblies are available. Please speak to a Legrand® representative for assistance.

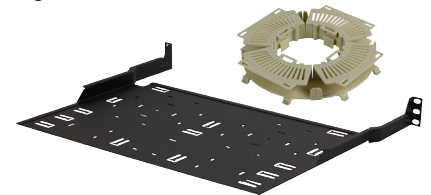


OR-HDCA6LC12AH

Infinium™ Fiber High Density Cable Manager

The high density cable manager was created to organize and protect connections to the high density jack panel. The cable manager can be combined with the cable management spools to manage excess slack. The cable manager can be used in conjunction with the cable management bar included with the patch panel.

PART NO.	DESCRIPTION
OR-HDCM-001	HD cable manager, black, includes (1) 8pk of 1/4 round cable management spools, makes (2) complete spools



OR-HDCM-001

Workstation Options

The HDJ series of jacks and HD fiber modules are supported by our most popular single gang faceplate sizes along with a surface mount box and furniture plate mounting. In addition, an HDJ TJ bezel can convert any of these jacks into a front loading TracJack® mount for inserting into the wide range of TracJack plates and boxes.

- HDJ jacks offer quick termination and installation time at the workstation
- HDJ jacks provide icon slots for identification icons
- Single gang faceplates and surface boxes offer label fields
- TracJack bezel allows any HDJ jack or any HD fiber module to mount into any TracJack faceplate or box
- Ability to field configure with different color and category jacks

Single Gang Plastic High Density Jack Faceplates

PART NO.	DESCRIPTION
OR-403HDJ12	Faceplate single gang, 2-port, fog white, rear loading with designation
OR-403HDJ13	Faceplate single gang, 3-port, fog white, rear loading with designation
OR-403HDJ14	Faceplate single gang, 4-port, fog white, rear loading with designation
OR-403HDJ16	Faceplate single gang, 6-port, fog white, rear loading with designation

Notes: Standard color for plastic HDJ plates is fog white. For white, add -88 to end of part number.



OR-403HDJ13-88

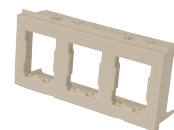
Workstation Options (cont)

Surface Housing, Frames and Furniture Plates

PART NO.	DESCRIPTION
OR-404HDJ4	Surface mount box, 4-port, for high density jacks, 4.75"L x 3.6"W x 1.5"D
OR-421HDJ-09	Furniture adapter plate for high density jacks, fog white, (3) rear load openings
OR-421HDJ-00	Furniture adapter plate for high density jacks, black, (3) rear load openings



OR-404HDJ4



OR-421HDJ-09

Plastic Blanks for High Density Jack Faceplates, Boxes, Frames and Panels

PART NO.	DESCRIPTION
OR-HDJB20	High density blank, 20pk, fog white
OR-HDJB20-00	High density blank, 20pk, black
OR-HDJB20-88	High density blank, 20pk, white
OR-HDJB20-13	High density blank, 20pk, ivory



OR-HDJB20

TracJack® Adapter Bezel for High Density Jacks

PART NO.	DESCRIPTION
OR-HDJTJA20	TracJack adapter bezel for high density jacks, 20pk, fog white
OR-HDJTJA20-88	TracJack adapter bezel for high density jacks, 20pk, white
OR-HDJTJA20-13	TracJack adapter bezel for high density jacks, 20pk, ivory



OR-HDJTJA20

Notes: Plates, frames and surface mount housings are 94V-0 rated thermoplastic housing and UL 1863 listed.

Series II Bezel for High Density Jacks

PART NO.	DESCRIPTION
OR-S22HDJ10	Series II 1U, 2 port HDJ, 10pk, fog white



OR-S22HDJ10



designed to be better.™



©2014 Legrand All Rights Reserved rev. 08/14 HDCONN2014



Data Communications

125 Eugene O'Neill Drive
New London, CT 06320
800.934.5432
www.legrand.us

570 Applewood Crescent
Vaughan, Ontario L4K 4B4
905.738.9195
www.legrand.ca

Follow Us

