



Model 1008-00

Open Ceiling Beam/Truss Mount for WAPs

Category: Wall and Hard Ceiling - Surface Mount

Mount Wireless Access Points (WAPs) in open ceilings with this convenient beam clamp with vanity cover. Quickly install WAP in preferred horizontal orientation. Mounting features for Cisco and Aruba Networks WAPs, with universal T-bar for most other vendors' WAPs. Includes tow beam clamps and Oberon's PN 35-WAP-SKIN, a paintable, plastic vanity cover which fits over WAP. Vanity cover is virtually transparent to wireless signal. (Painting the WAP itself may void the manufacturer's warranty, so use the 33-WAP-SKIN to change its color). Ideal for restaurants and retail environments with open ceilings. Conduit, raceways, and cable can be terminated in the bracket to provide for a clean appearance. The access point can be locked in place using the WAP manufacturer's locking features.



Features

- Conveniently install and conceal WAP in open ceiling environment
- Designed to enable wireless access points to be mounted in preferred horizontal orientation
- T-bar bracket accommodates access points from most vendors
- Beam mount clamps allow it to be mounted directly to a beam or truss
- Textured black powder coated steel bracket



Specifications

- Paintable, black ABS plastic vanity cover included (Oberon P/N 33-WAP-SKIN)
- Fits wireless access points up to 9" x 9"
- Size: 9" x 9" x 3"
- Shipping weight: approximately 3 lbs

Measurements

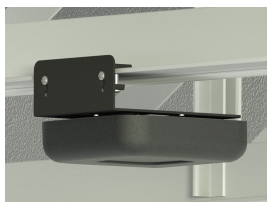
(maximum values; additional information may be available in Specifications):

- Height: 3.00 in.
- Width: 9.00 in.
- Depth: 9.00 in.
- Item Weight: 2.5 lbs.
- Shipping Weight: 3 lbs.

Includes

- (1) Right Angle Beam Mount
- (1) 33-WAP-SKIN
- (1) Installation Instructions

Images



Documentation Links

[Installation Instructions](http://oberonwireless.com/images/WebDocs/Model1008-00_Installation_Instructions.pdf) - http://oberonwireless.com/images/WebDocs/Model1008-00_Installation_Instructions.pdf

[Customer Prints](http://oberonwireless.com/images/WebDocs/Model1008-00_Customer_Print.pdf) - http://oberonwireless.com/images/WebDocs/Model1008-00_Customer_Print.pdf