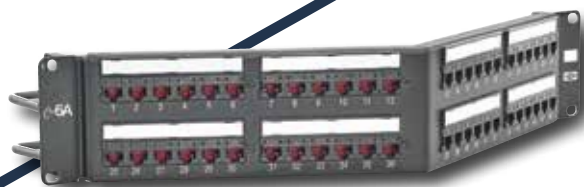


Wave 2

Ready to ride?

Category 6A Connectivity for 802.11ac and Beyond



802.11ac Wave 2 exceeds 1Gb per second. Hubbell's Category 6A cabling system supports up to 10GBASE-T, providing faster speeds, greater bandwidth, and the most efficient PoE delivery. Coast through 802.11ac Wave 2 and be prepared for 802.11ax with the Hubbell 25-Year Mission Critical® application assurance warranty.

MAXIMUM BANDWIDTH • HIGHEST POWER DELIVERY



ISB Surface Mount Boxes

Description	1-Port	2-Port
Standard	ISB1xx	ISB2xx
UL Plenum Rated	ISB1xxP	ISB2xxP

xx = Color:

BK (Black), **EI** (Electric Ivory), **GY** (Gray), **OW** (Office White), **W** (White)



NEXTSPEED® Ascent Category 6A Jacks

Unit of Measure	Catalog No.
Single pack	HJ6Axx
25-pack	HJ6Axx25

xx = Color:

BK (Black), **B** (Blue), **EI** (Electric Ivory), **GL** (Gold*), **GY** (Gray), **GN** (Green), **OW** (Office White), **OR** (Orange), **P** (Purple*), **R** (Red), **W** (White), **Y** (Yellow) *Gold and Purple available in 25-pack only.

TIA Guidance TSB-162-A

- Two ports of a minimum of Category 6A performance per WAP location

Specifying Cabling per Wireless Access Point Location

- **Data rate:**
Recommended support of 10GBASE-T speeds
- **Current carrying capacity:**
Recommended support proposed for PoE levels of at least 49W, and up to 100W
- **Number of ports:**
Two to support 10GBASE-T with PoE or to support link aggregation

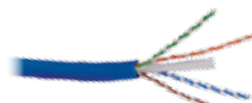


NEXTSPEED® Ascent Category 6A Patch Panels

Format	Width Inches (mm)	Height Inches (mm)	Ports	Rack Units	Black Catalog No.	White Catalog No.
Straight*	19" (483)	1.75" (45)	24	1	HP6A24	HP6A24W
		3.50" (89)	48	2	HP6A48	HP6A48W
		7.00" (178)	96	4	HP6A96	-
Angled**	19" (483)	1.75" (45)	24	1	HP6A24A	-
		3.50" (89)	48	2	HP6A48A	-

*Versions without cable management bar available as HP6A24E and HP6A48E.

**HP6AxxA angled panel protrudes 4.46" from the plane of the rack. One extra inch of space is recommended between the door and panel angle.



NEXTSPEED® Ascent Category 6A Cable

Color	Plenum Spool	Riser Spool
Blue	C6ASPB	C6ASRB
Gray	C6ASPGY	C6ASRGY
White	C6ASPW	C6ASRW
Yellow	C6ASPY	C6ASRY

Note: All category rated cable is packaged in 1000ft quantities. Made-to-order colors available.



NEXTSPEED® Ascent Category 6A Patch Cords

Unit of Measure	Plenum	Riser
Single pack	HC6AxxyyP*	HC6Axxyy

xx = Color:

BK (Black), **B** (Blue), **GY** (Gray), **GN** (Green), **OR** (Orange), **PK** (Pink), **P** (Purple), **R** (Red), **W** (White), **Y** (Yellow)

yy = Standard Length:

01 (1'), **03** (3'), **05** (5'), **07** (7'), **10** (10'), **15** (15'), **20** (20').

Made-to-order lengths are available from 25ft to 100ft in 5ft increments.

*Plenum available in **B** (Blue), **GY** (Gray), **GN** (Green) and **Y** (Yellow) only, with lengths of **03** (3'), **05** (5'), **07** (7'), **10** (10') and **15** (15') only.