



SMPTE CABLE, ASSEMBLIES, & ENCLOSURES

PRODUCT LINE GUIDE



OCC's new Broadcast SMPTE Enclosures are versatile, configurable steel enclosures for SMPTE 311 or other commonly used connections. Designed for quick and easy connections, OCC created these modular enclosures to simplify connectivity and transmission in the fast-paced broadcast industry. Where repeatable performance is critical, our enclosures ensure that your broadcast production runs seamlessly.

Offering the durability you expect from OCC, these new SMPTE cables allow you to source all your connection needs from one place. The TACTICAL, LSZH, FLEX, and Riser all utilize the OCC Ultra-Fox™ Plus deployable buffer system with the combination of a triple thickness 500 micron diameter acrylate coating together with a hard elastomer 900 micron tight buffer for maximum fiber protection.



SMPTE POWER-RISER/PLENUM

PART NUMBER: CX005HBAE9KR/CX005HBAE9KP

- > Copper only for providing signals to cameras
- > Permanent installations where UL Riser or Plenum Rating is required
- > Ideal for venues where a fiber infrastructure already exists
- > SMPTE 311 compatible when paired with 2 single-mode fibers in a separate cable (DX or HC Cable are excellent companions)



SMPTE ESSENTIAL

PART NUMBER: CX008HBAA9KB

- > Standard SMPTE cable
- > Great value
- > Perfect for indoor use and occasional outdoor deployment
- > Fully SMPTE 311 compliant, contains standard 245 micron acrylate optical fiber



SMPTE RISER/PLENUM

PART NUMBER: C-008HBAA5KR/CX008HBAA9KP

- > Permanent installations where UL Riser or Plenum Rating is required
- > Connects cameras to fixed wall box connections
- > Riser is fully SMPTE 311 compliant
- > Plenum is compatible with SMPTE 311 Standard (O.D. smaller than 9.2, therefore not fully compliant)



SMPTE TACTICAL

PART NUMBER: C-008HBAA5KM

- > Harsh outdoor deployable applications
- > Utilizes the Ultra-Fox™ Plus buffer system for maximum fiber protection
- > Fully SMPTE 311 compliant



SMPTE LSZH

PART NUMBER: C-008HBAA5KZ

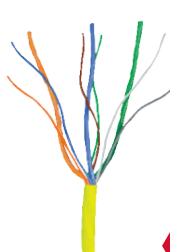
- > Low-smoke, zero-halogen cable
- > Utilizes the Ultra-Fox™ Plus buffer system for maximum fiber protection
- > Fully SMPTE 311 compliant



SMPTE FLEX

PART NUMBER: C-006HBAD5KB

- > Flexible enough to let cameras move quickly and frequently
- > Aramid yarn central strength member increases flexibility and decreases weight
- > Polyurethane jacket ensures durability
- > Utilizes the Ultra-Fox™ Plus buffer system for maximum fiber protection
- > Compatible with SMPTE 311 Standard



SMPTE 3-IN-1 STADIUM CABLE-RISER/PLENUM/OUTDOOR

PART NUMBER: CX021HBAB9GR/CX021HBAB9YP/CX021HBAB9KA

- > Permanent installations where UL Riser or Plenum Rating is required
- > 3 cameras in one location, only one cable to run
- > Connecting fixed wall box connections to control room patch panels
- > Compatible with SMPTE 311 Standard
- > Fibers and power groups are uniquely identified by TIA color coding standards
- > 245 micron acrylate optical fiber

For more than 25 years, OCC has been dedicated to serving our customers with a broad range of the highest quality fiber optic assemblies worldwide. We make sure that our assemblies meet the individual requirements of the wide variety of fiber connectivity and backshells available in the market. We offer a diverse product family with the products you need, including SMPTE assemblies, and the commitment to deliver them when you need them. OCC has standard assemblies in stock for fast shipping turnaround, in addition to the ability to create custom assembly solutions for your needs. OCC is also a certified Canare™ HFO Assembler.

CABLE ASSEMBLIES FOR PATCH CABLES AND CAMERA CABLES

PART NUMBER	PART NAME
OCA-FAP1MAP1005-****F	SMPTE FLEX Cable (FCFA/FCMA)
OCA-FAP1MAP1002-****F	SMPTE TACTICAL Cable (FCFA/FCMA)
OCA-FAP1MAP1001-****F	SMPTE ESSENTIAL Cable (FCFA/FCMA)

CAMERA CONTROL UNIT ASSEMBLIES TO PATCH PANEL

PART NUMBER	PART NAME
OCA-MAP1FFP1008-****F	FCMA/FCFRCA, SM, PLENUM, 2F/6E
OCA-MAP1FFP1007-****F	FCMA/FCFRCA, SM, RISER, 2F/6E

PIGTAIL ASSEMBLIES

PART NUMBER	PART NAME
OCA-FFR1SCP1006-****F	Panel Mount Plug Pigtail Assembly
OCA-MFR1SCP1006-****F	Panel Mount Socket Pigtail Assembly

* Variations of length and type of SMPTE available

SMPTE Assembly on Mars Reel



REPAIR & RESTORATION

In the fast-paced and intense broadcast industry, products need to be durable and reliable. But the reality is that breaks happen, and they need to be fixed quickly. At OCC, we not only offer reliable products, but also Repair and Restoration Services for most broadcast connectivity and cable products in the market. OCC’s Repair and Restoration services provide value to our customers, whether it’s through our diverse product family or helping to extend the life of our competitor’s products. OCC also offers ongoing maintenance and testing of your cable assemblies. Please contact us at 1.877.509.1500 for a quote and quick lead time estimation.

LEAD TIME

- > 24-hour turnaround on quotes
- > 1-3 days to repair if necessary materials are on-site
- > 3-5 days to repair once materials received if NOT on-site

SMPTE 8X8 AND 6X6 ENCLOSURES

OCC's new 8x8 and 6x6 modular enclosures are highly configurable and designed to terminate SMPTE 311 and other commonly used connections on both the front and back panel. There is also a unique reversible front panel: the panel can angle outward when space is at a premium inside the enclosure, or the panel can angle inward to buy precious space in front of the panel. (For example, when the rack has a door above it that must close).



FEATURES & BENEFITS

- > 8 x 8 version: 8 ports on the front and 8 ports on the back side
- > 6 x 6 version: 6 ports on the front and 6 ports on the back side
- > Reversible front panel available for inward or outward angle option
- > Constructed of 16-gauge steel with a black powder-coat finish
- > Discrete connectivity is available in SC, ST, LC, and FC type connectors
- > Front panel available preloaded with LEMO, Canare, or Neutrik connectivity
- > Front and rear panel also compatible with other common broadcast connectivity methods
- > All connectors are fully isolated
- > Connectivity Ports and Cable Glands: Up to 8 available as well as various cable gland sizes available
- > All rear cable glands are fully isolated
- > Offers full fiber management inside the enclosure
- > Fusion Splice option available: Up to two splice trays available, fiber hoop(s) for fiber management included with splice tray(s)
- > Power bracket/adaptor plate brackets
- > Power connectors options available: AMP/TYCO plug or receptacle, or blunt
- > Measures 19"W, 3.5"H (2RU), 9.26"D



Full cable management available within the enclosure.



Unique reversible panel allows for inward angle to save space, for example, if the rack has a door.



Reversible panel allows for outward angle to create more space inside the enclosure.

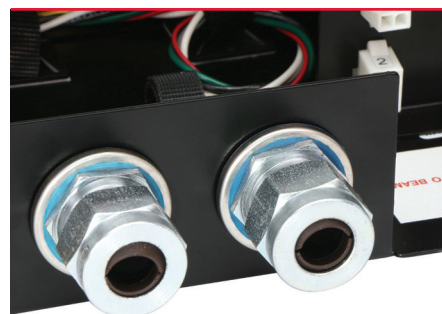
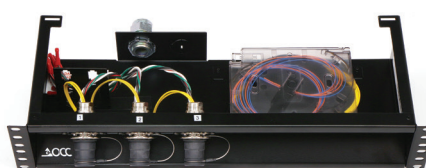
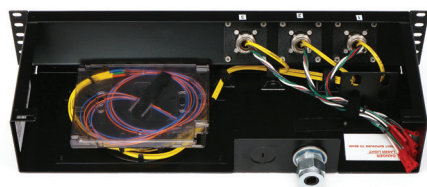
SMPTE 6X2 AND 3X1 ENCLOSURES



The 6x2 and 3x1 R2U modular enclosures are designed specifically to terminate up to two of OCC's SMPTE 3-IN-1 Stadium cables into SMPTE 311 plugs or sockets. These enclosures are ideal for providing connectivity between camera wells with multiple cameras and the equipment room.

FEATURES & BENEFITS

- > 6 ports in the front and 2 ports in the rear
- > 3 ports in the front and 1 port in the rear
- > Front panel with fixed inward angle
- > Constructed of 16-gauge steel with a black powder-coat finish
- > Internal discrete connectivity is available in SC, ST, LC, and FC type connectors
- > Front panel available preloaded with LEMO, Canare, or Neutrik connectivity
- > Front and rear panel also compatible with other common broadcast connectivity methods
- > All connectors are fully isolated
- > All rear cable glands are fully isolated, various cable gland sizes available
- > Offers full fiber management inside the enclosure
- > Fusion Splice option available: Up to two splice trays available, fiber hoop(s) for fiber management included with splice tray(s)
- > Power bracket/adaptor plate brackets
- > Power connector options available: AMP/TYCO plug or receptacle, or blunt
- > Measures 19"W, 3.5"H (2RU), 6.63"D (will fit in JBT enclosures greater than 10"D)

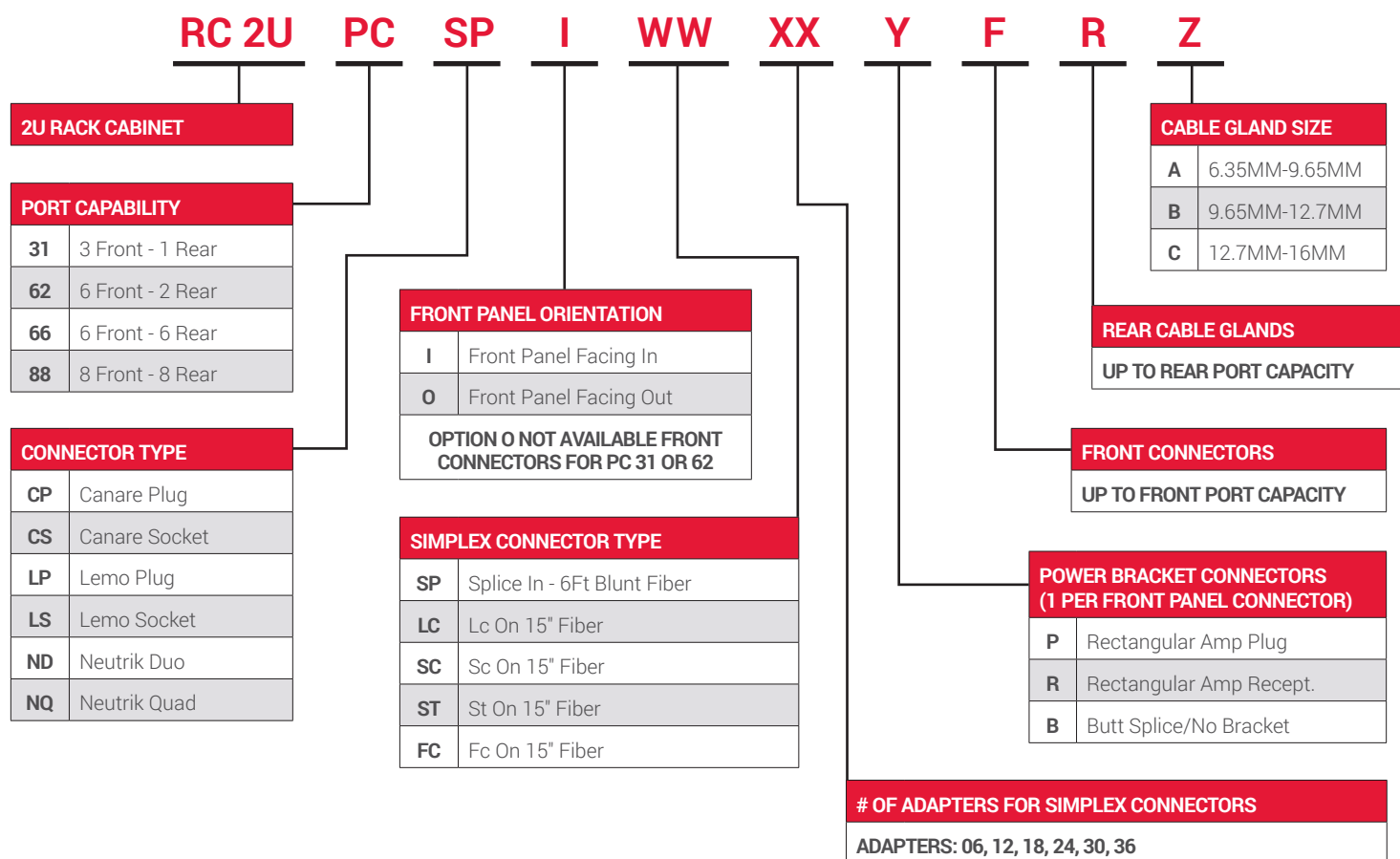


Full cable management available within the enclosure.

3x1 R2U Front panel is available preloaded with Canare or Lemo connectivity.

Rear cable glands are fully isolated with various cable gland sizes available.

ORDERING GUIDE



EXAMPLE:

6x2 enclosure with Canare Plugs, front panel oriented inwards, SC simplex fiber connections, rectangular Amp plug electrical connections, with medium size cable glands.

R C 2 U 6 2 C P I S C 0 1 P 6 2 B

--- OR ---

NUMBER OF SPLICE TRAYS (MUST SPECIFY 'SP' FOR SIMPLEX CONNECTOR TYPE)	
01	For Up To 12 Fibers
02	For Up To 24 Fibers
03	For Up To 32 Fibers
1 FIBER HOOP PROVIDED PER ENCLOSURE	



Contact a representative today! **800-622-7711**

OCC ROANOKE, VA

Corporate Headquarters and Fiber
Optic Cable Manufacturing Facility
5290 Concourse Drive
Roanoke, VA 24019 USA
540.265.0690 or 800.622.7711

OCC DALLAS, TX

Harsh Environment and Specialty
Connectivity Manufacturing Facility
1700 Capital Avenue, Suite 150
Plano, TX 75074 USA
972.509.1500 or 877.509.1500

OCC ASHEVILLE, NC

Enterprise Connectivity
Manufacturing Facility
33 Superior Way
Swannanoa, NC 28778 USA
828.298.2260 or 800.880.7674

VISIT US AT
OCCFIBER.COM