

db Enline Installation and User Manual



TABLE OF CONTENTS

| | |
|--------------------------------------|---|
| db ENLINE OVERVIEW | 2 |
| INSTALLATION THE db ENLINE UNIT..... | 3 |
| SUGGESTED WIRING CONFIGURATION | 6 |
| USING THE db ENLINE UNIT | 7 |

db ENLINE OVERVIEW

The db Enline unit is a device used with the db Bus architecture. The db Enline unit is used in the db ServerRack – End-of-row solution, as a user input device. The unit allows a user to specify which door they are attempting to access, and then allows them to authenticate their credentials (PIN/Fingerprint/RFID). If the user enters a valid door number and has access to the door at the time of requesting access, the door will unlock.

INSTALLATION THE db ENLINE UNIT

It's important to record the serial number and location of each db Enline Unit installed. The db Enline's serial number is used to identify it within the Digitus DAS-SQL software.

There is no limit to the number of db Enline units that can be installed on a db Bus, as long as:

$$(\text{db Enline Units} + \text{Remote Nodes} \leq 32)$$

Typically one db Enline Unit would be installed at the end of each row of cabinets.

The Enline unit comes in two parts, the front section and the back section.



Front Section



Back Section

Locate a suitable mounting surface for the db Enline unit. This would typically be on the end of a row of cabinets. A person using the db Enline unit should be able to stand directly in front of the unit without obstruction.

- Use the enclosed mounting template to mark the location for the mounting and cable pass-through holes. Ensure the template is level prior to marking by using a torpedo level.

It is highly recommended that the side panel be removed from the cabinet and the drilling be done outside of the data center. This will prevent the possibility of any metal shavings being drawn into electrical equipment.

- Drill the cabinet where the 4 mounting screws are to be fixed.

- Drill the cabinet where you have marked the cable passageway, so that the cables can be passed directly into the rear of the db Enline unit.
- Mount the back plate of the db Enline unit to the cabinet using the supplied mounting hardware.
- The Enline unit attaches directly to the Digitus db Bus. Pass the db Bus cables from the inside of the cabinet, through the cable pass-through hole.

- Connect the db Bus cables to the RJ-45 sockets as shown in Figure 1.



Figure 1

- Route the cables as shown in Figure 2.

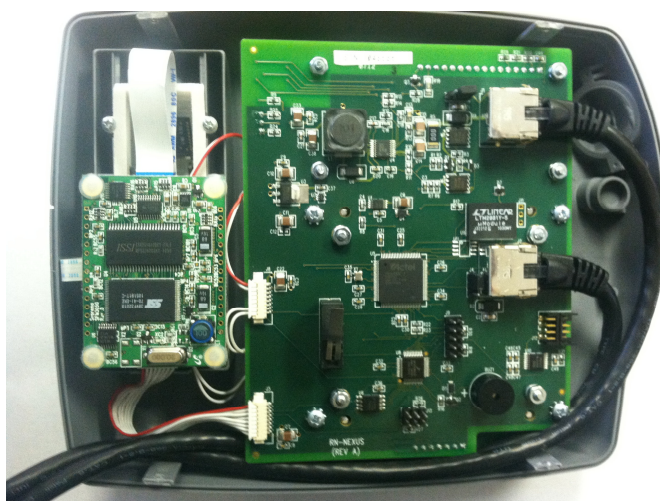


Figure 2

- Insert the 4 mounting lugs on the front section of the db Enline unit into the 4 mounting holes on back section of the db Enline unit.
- Secure the db Enline unit with the 4 supplied screws.

SUGGESTED WIRING CONFIGURATION

In order to prevent any individual cable-length from being too long, please follow the suggested wiring configuration:

The diagram below shows a top down view of a row of server cabinets. The db Bus Controller is located in the far left cabinet, with a Remote Node, and all other cabinets contain just a Remote Node. The db Online Unit is installed on the outside of the far right cabinet.

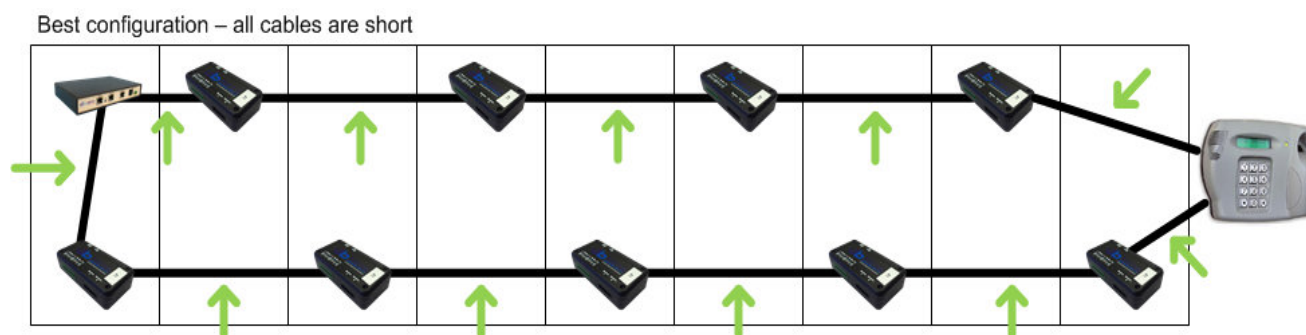


Figure 3

Refer to the db ServerRack Bus Controller manual for db Bus Controller and Remote Node installation.

USING THE db ENLINE UNIT

The configuration of the db Enline unit is done via the DAS-SQL Management Software.

Door Identification

The user is first prompted to identify which door they are attempting to open.

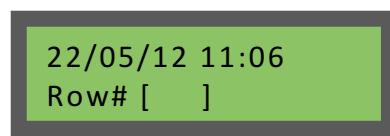
There are three possible criteria that can be used to identify the door a user is attempting to access:

- Row Number
- Cabinet Number
- Door Number

Row Number and Cabinet Number are optional, whereas a Door Number is always required. Thus the options available are:

- Row Number + Cabinet Number + Door Number
- Row Number + Door Number
- Cabinet Number + Door Number
- Door Number only

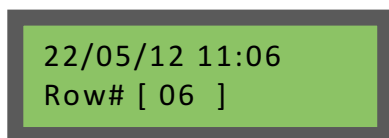
The number of digits required for each item is set through the DAS-SQL Management Software. The [] (square brackets) indicate the number of digits required. Leading zeros are required to ensure the correct number of digits, e.g. If the requested Row# is "3" and the required number of digits is two, the row number should be entered as "03".



22/05/12 11:06
Row# []

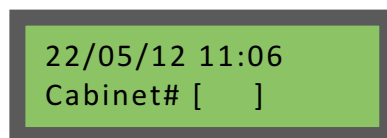
Key Requirement

The db Enline can be configured to either require a # key to be pressed after each piece of data entered, or to automatically proceed to the next menu item, once the required number of digits has been entered. This is also set through the DAS-SQL Management Software.



22/05/12 11:06
Row# [06]

Waiting for #key



22/05/12 11:06
Cabinet# []

#key not require, automatically
proceeds to next menu item

Incorrect Selection

If an incorrect parameter is entered, a message will indicate this on the db Enline unit.

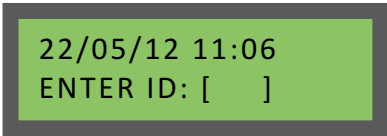


Row not found

User Authentication

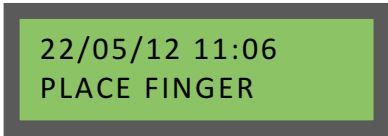
Once the door identification parameters have been correctly entered, the user must then authenticate. This will determine whether the user has access to the specified door. The db Enline II unit allows up to two credentials to be used for authentication, PIN and fingerprint. The db Enline III unit allows up to three credentials to be used for authentication, PIN, RFID card and fingerprint. The required credentials are configured through the DAS-SQL Management Software.

The user must provide the credentials as requested by the db Enline unit:



22/05/12 11:06
ENTER ID: []

User is required to enter
a 4-digit PIN number.



22/05/12 11:06
PLACE FINGER

User is required to place
finger on the scanner.

Access Granted/Denied

Based on verification of the credentials, access is either granted or denied.



Access Granted

Access Granted



Access Denied

Access Denied

Following a successful access, the specified door will unlock.

Time Restriction

It's also possible to restrict what times a user has access to each door. The db Enline unit will check that the user is attempting access within their permitted times. If access is attempted outside a user's permitted times, the following message will be displayed.



OUTSIDE VALID
TIME CODE

Digitus Biometrics, Inc.
2 East Bryan Street, Suite 502
Savannah, GA 31401 USA

Phone: 912-231-8175
Fax: 912.629.9478
www.digitus-biometrics.com
support@digitus-biometrics.com

