

Line List Advantage

Features

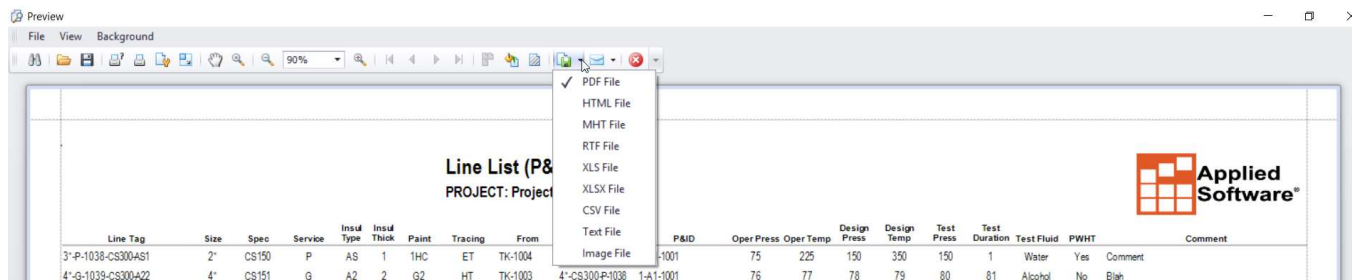
An automatic line list will help you maintain valid information on your P&IDs and with your process, mechanical and electrical groups. The custom line list from Applied Software provides the following advantages:

- [Consistent Line List Output](#)
- [Line List Control](#)
- Non-Plant 3d Users access fresh data
- [Project Data Receives the Latest Changes](#)
- [Usage Guide](#)

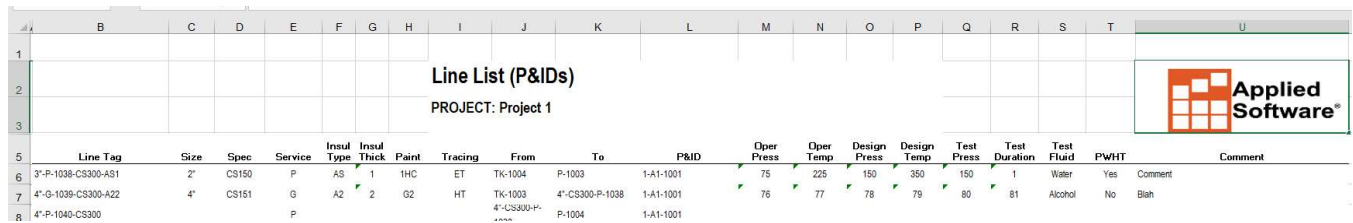
To use the automatic line list successfully, the following workflows will have to be adopted in your project practice.

Consistent Line List Output

The report preview allows creating the report at a custom location with a custom file type, ideal for creating a pdf for client review.



Reports generated in Excel will have consistent column widths and row heights.



Line Tag	Size	Spec	Service	Insul Type	Insul Thick	Paint	Tracing	From	To	P&ID	Oper Press	Oper Temp	Design Press	Design Temp	Test Press	Test Duration	Test Fluid	PWHT	Comment
3"-P-1038-CS300-A81	2"	CS150	P	AS	1	1HC	ET	TK-1004	P-1003	1-A1-1001	75	225	150	350	150	1	Water	Yes	Comment
4"-G-1039-CS300-A22	4"	CS151	G	A2	2	G2	HT	TK-1003	4"-CS300-P-1038	1-A1-1001	76	77	78	79	80	81	Alcohol	No	Blah
4"-P-1040-CS300			P						P-1004	1-A1-1001									

Line List Control

Selecting the Main Size and Spec

When the IsMainLineSegment property is set to true for a line segment, the report will pull the size and spec from that line to fill in the report data. In this example, the size and spec can be switched from 4" to 3" by toggling the main line segment.

Comment

Status

Size 3"

Spec CS150

Tracing ET

Insulation Type AS

To 4"-CS300-P-1038

From 4"-CS300-P-1038

Operating Temperat... 225

Operating Pressure 75

Design Pressure 150

Design Temperature 350

Testing Fluid Water

Test Pressure 150

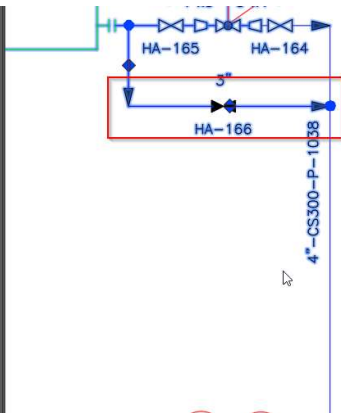
Insulation Thickness 1

Paint Code 1HC

IsMainLineSegment True

PWHT Yes

LineGroupTag 1038



Line Tag	Size	Spec	Service
3"-CS150-P-1038	3"	CS150	P
4"-G-1039-CS300-A22	3"	CS150	G
4"-P-1040-CS300	3"	CS150	P

Setting the P&ID Drawing

The IsMainLineSegment also defines with drawing should be reported in the Drawings property.

Operating Pressure ?

Design Pressure ?

Design Temperature ?

Testing Fluid ?

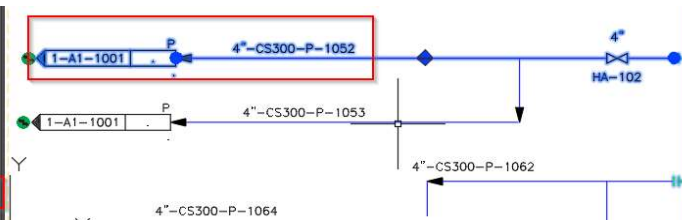
Test Pressure ?

Insulation Thickness ?

Paint Code ?

IsMainLineSegment True

PWHT ?



3"-P-1047-CS300	3"	CS300	P	TK-1004	1-A1-1001
4"-P-1049-CS300	4"	CS300	P	E-1001, TK-1004	1-A1-1001
4"-P-1052-CS300	4"	CS300	P	TK-1002	1-A1-1002
4"-P-1053-CS300	4"	CS300	P	E-1001	1-A1-1002
4"-P-1054-CS300	4"	CS300	P	E-1002	1-A1-1002

Project Data Receives the Latest Changes

P&ID Project Data

Status	InsulationThi	Insulation Type	Paint Code	Tracing	Operating Pressure	Operating Temperature	Design Pressure
	1	AS	1HC	ET	75	225	150
	2	A2	G2	HT	76	77	78
	1	AS	Y2		88	205	150

Old Value: <Unassigned>