



JKI Design Palette™ for LabVIEW

Build better user interfaces by design™

User Guide

Table of Contents

[About the JKI Design Palette](#)

[Quick Start - The Most Important Stuff to Know...](#)

[“Quick Drop” mode \(for keyboard only operation\)](#)

[Launch the JKI Design Palette with Ctrl+Shift+Space](#)

[The palette will open and the search text box will have key focus](#)

[Start typing into the search text box to show controls that match your search](#)

[Use Tab and Shift+Tab to select a control](#)

[Drop the selected control by pressing Enter](#)

[Drag & Drop also works \(as you’d expect\)](#)

[Show Labels of All Controls in the JKI SDP \(Ctrl+L\)](#)

[Pinning the Palette Window \(to Keep it Open\)](#)

[Closing the JKI Design Palette Window](#)

[Advanced Search Filters](#)

[Installing Updates](#)

[Resizing the Palette Window](#)

[Easter Eggs and Other Fun Stuff](#)

[How the JKI Design Palette Came to Be](#)

[Custom Colors](#)

[Interactive Mode](#)

[Adding your Own Themes and Controls](#)

[Installing Theme Files](#)

[File Naming and Search Keywords](#)

[Regular Custom Control vs Type Definition](#)

[Activating the Software](#)

About the JKI Design Palette

The JKI Design Palette provides LabVIEW users with a fast and easy way to *build better user interfaces by design™*. It does this by providing a visual palette for finding front controls and indicators that look just like they do on the VI Front Panel – what you see is what you get! Perhaps best of all, it gives you access to all of the [JKI Flat UI Controls 2.0](#) palette of professionally designed LabVIEW controls. [Click here to find out more about how the JKI Design Palette came to be.](#)

Quick Start - The Most Important Stuff to Know...

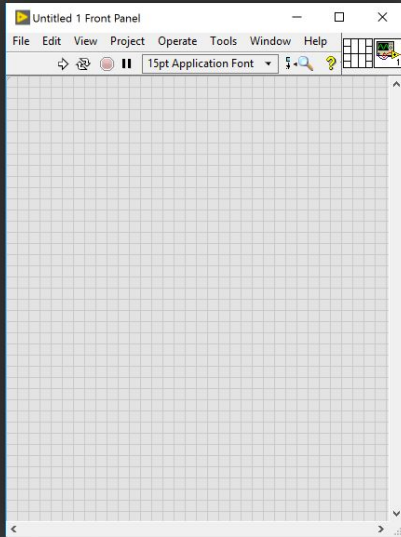
OK, you've opened the help document, so you've probably got the JKI Design Palette installed. Here's the most important stuff you need to know...

And, if you have more questions or want to chat with other users and the JKI team, please post to our [Community Discussion Forum for the JKI Design Palette](#).

“Quick Drop” mode (keyboard only operation)

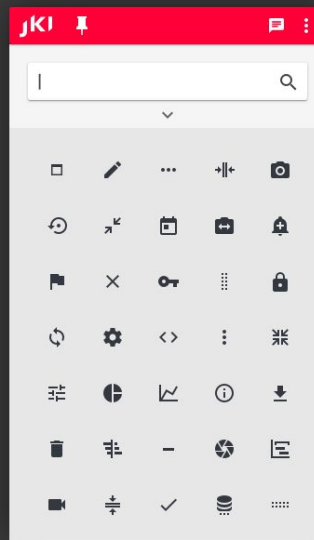
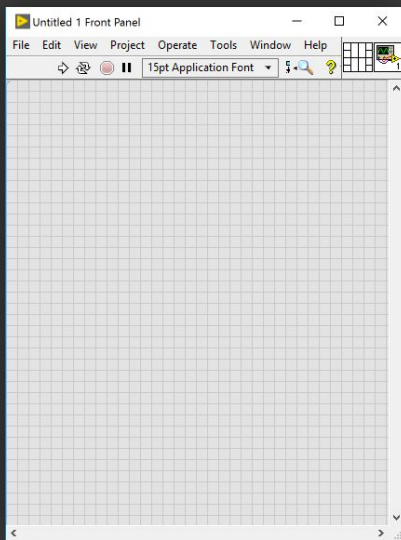
Launch the JKI Design Palette with Ctrl+Shift+Space

You can quickly launch the JKI Design Palette from the keyboard by pressing **Ctrl+Shift+Space** from any VI Front Panel (**Ctrl+Alt+Space** works, too).



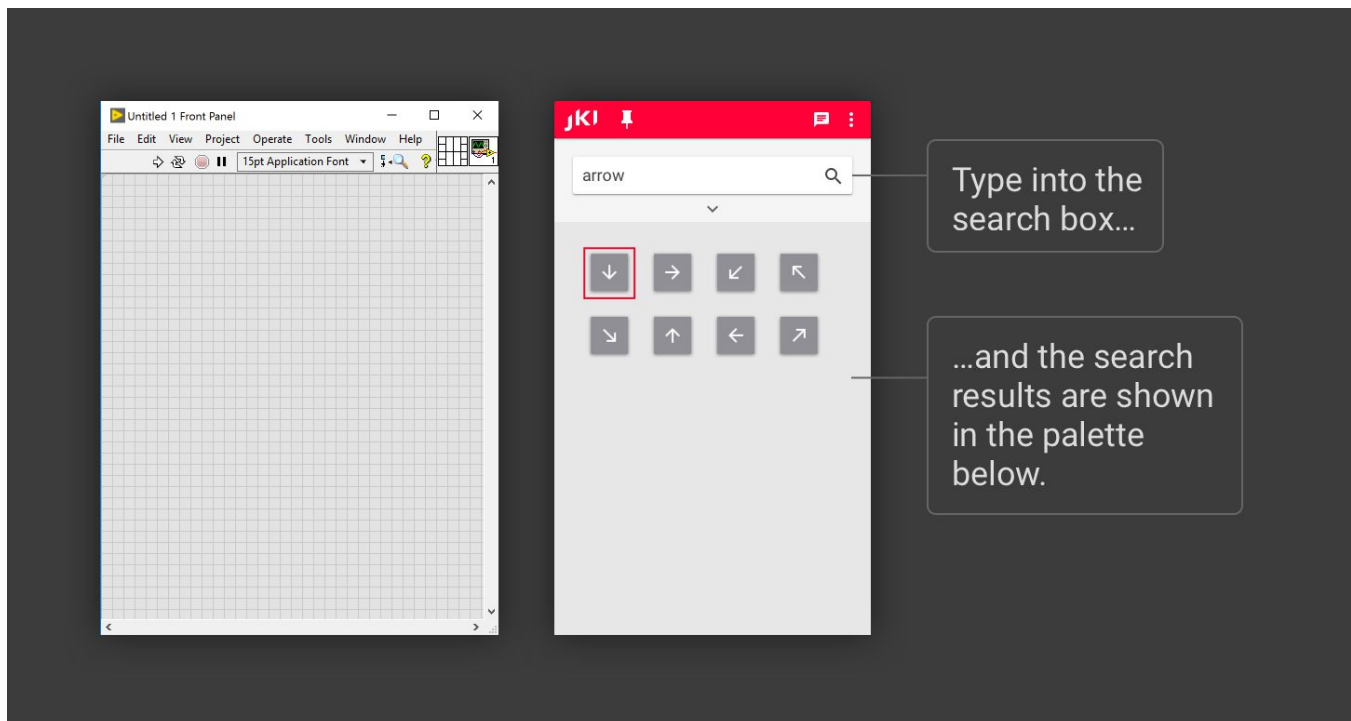
With a VI Front Panel active, press **Ctrl + Shift + Space** to open the JKI System Design Palette in “Quick Drop” mode.

The palette will open and the search text box will have key focus



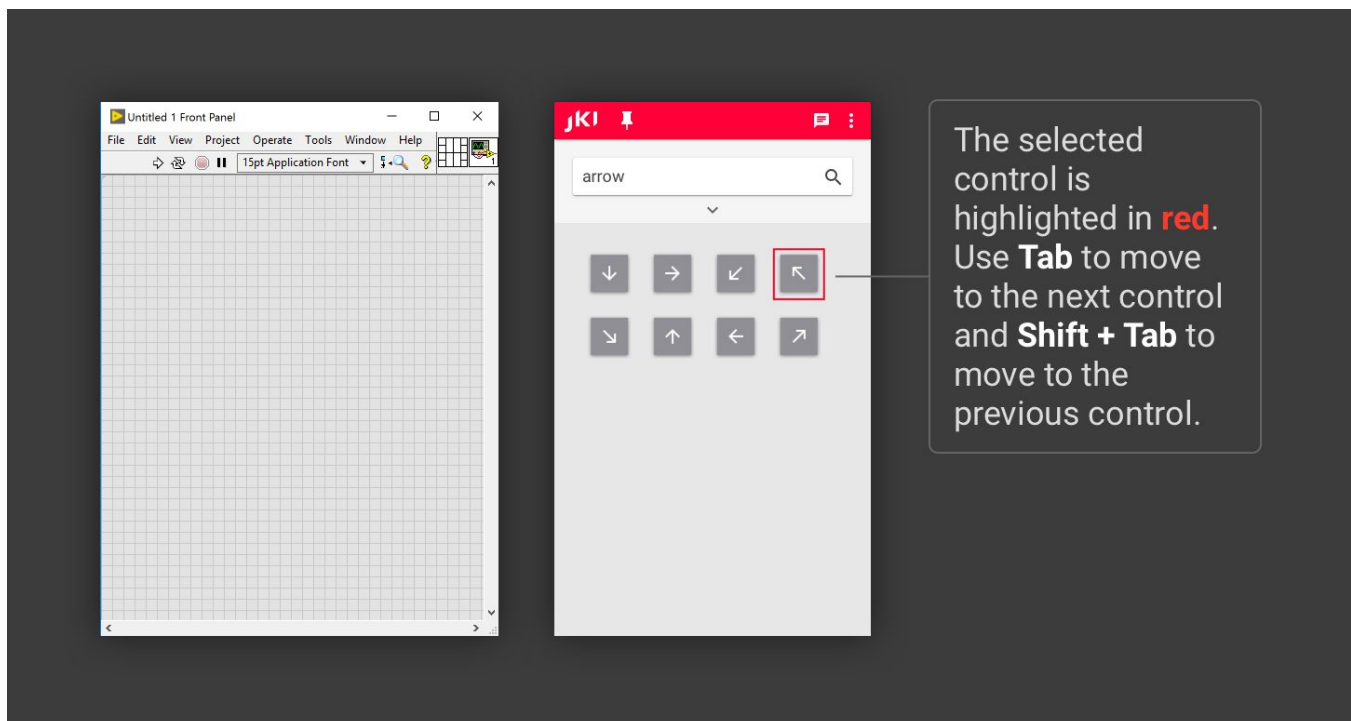
The JKI Design Palette will open and you can immediately start typing into the search box. (No need to use your mouse)

Start typing into the search text box to show controls that match your search



Use Tab and Shift+Tab to select a control

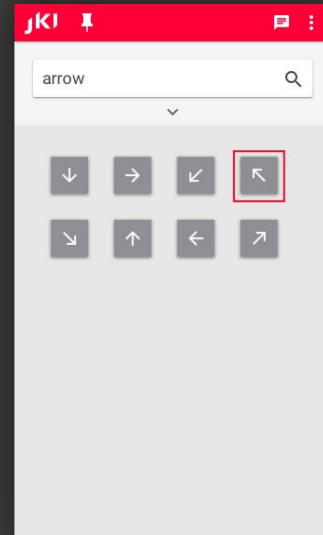
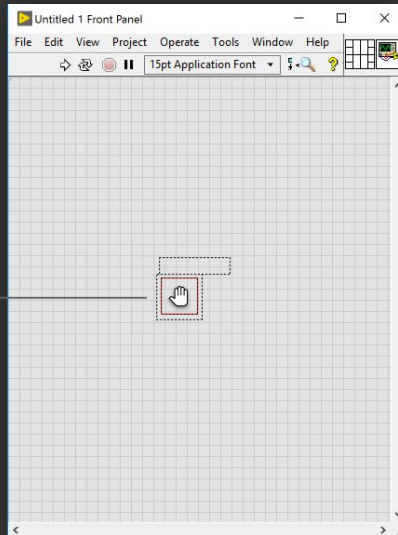
Select a control (the one highlighted in red) by pressing the Tab (or Shift+Tab) key to select the next (or previous) control shown in the palette.



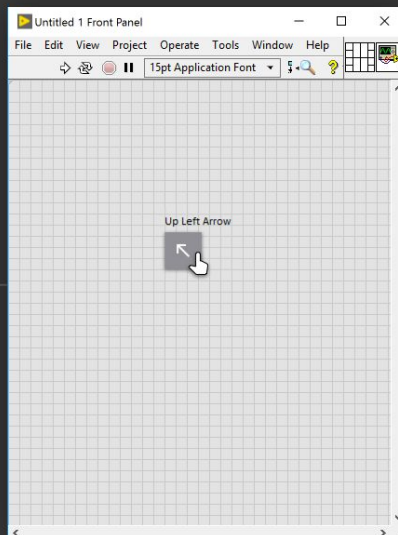
Drop the selected control by pressing Enter

Drop the selected control onto a VI's Front Panel by **pressing Enter** and then **clicking on a VI's Front Panel** where you want to place the control.

Pressing **Enter** will add the selected control to your mouse pointer



Left Click to place the control onto the Front Panel.

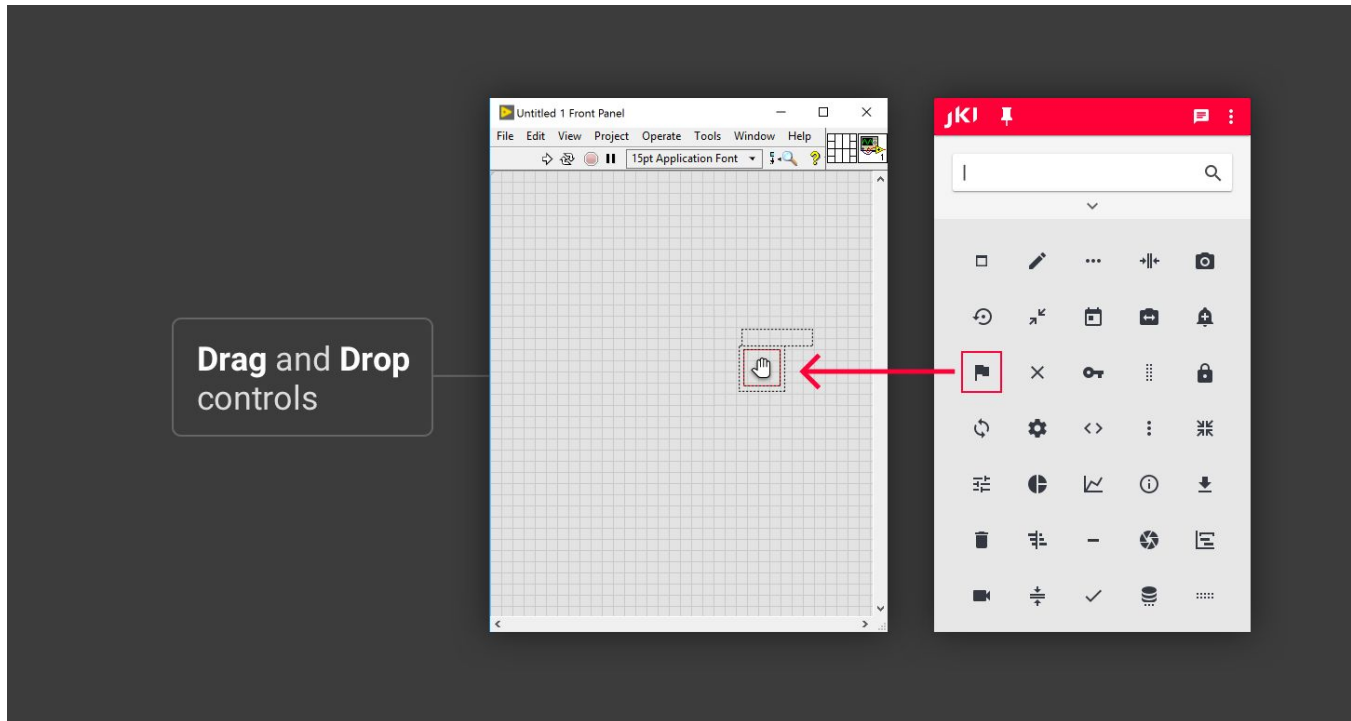


The palette automatically hides if it's not set to pinned.

Drag & Drop also works (as you'd expect)

You can also **Drag & Drop items** (with your mouse) from the JKI Design Palette and place them onto your Front Panels, just like you do from the built-in LabVIEW Controls Palette.

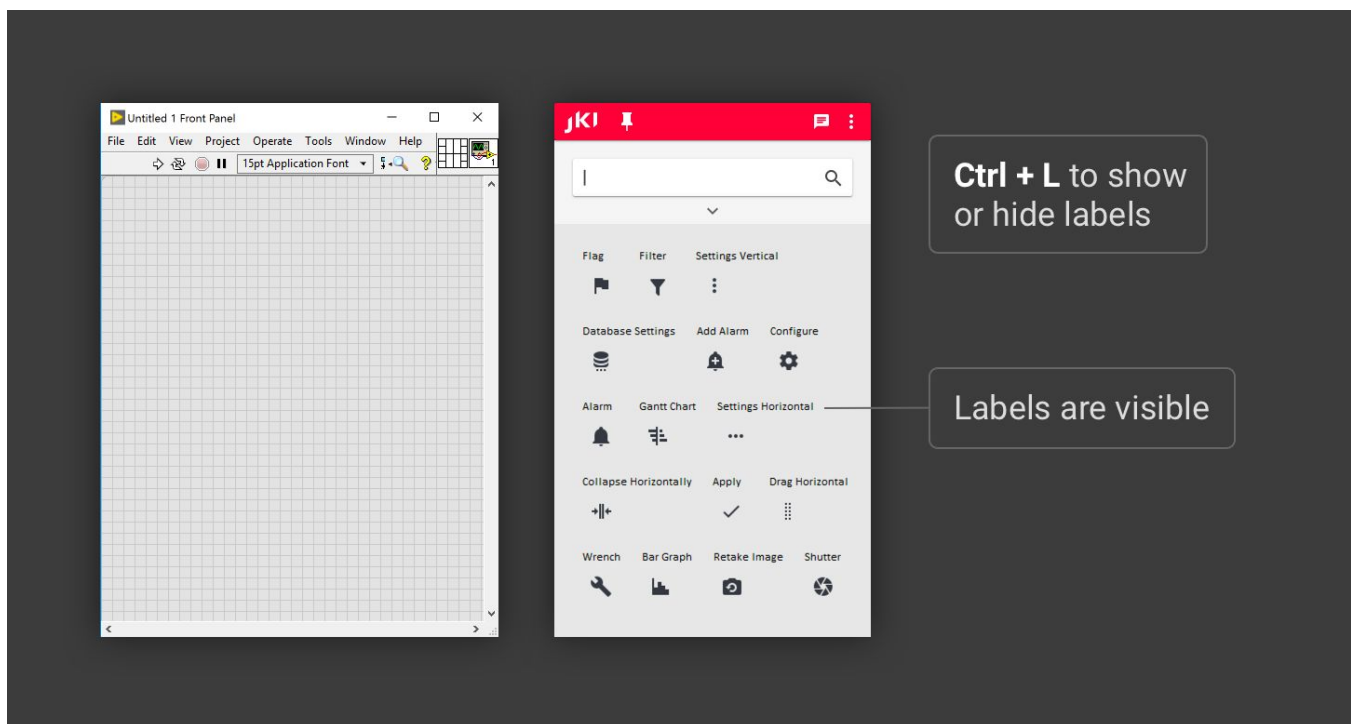
Tip: At this point, you may want to [pin the palette](#) (so it doesn't auto-hide) if you intend to drag and drop several different controls onto the Front Panel.



Show Labels of All Controls in the JKI SDP (Ctrl+L)


You can show or hide the labels of all the controls in the JKI SDP by pressing **Ctrl+L**.

Press **Ctrl+L** to show labels on all the controls:

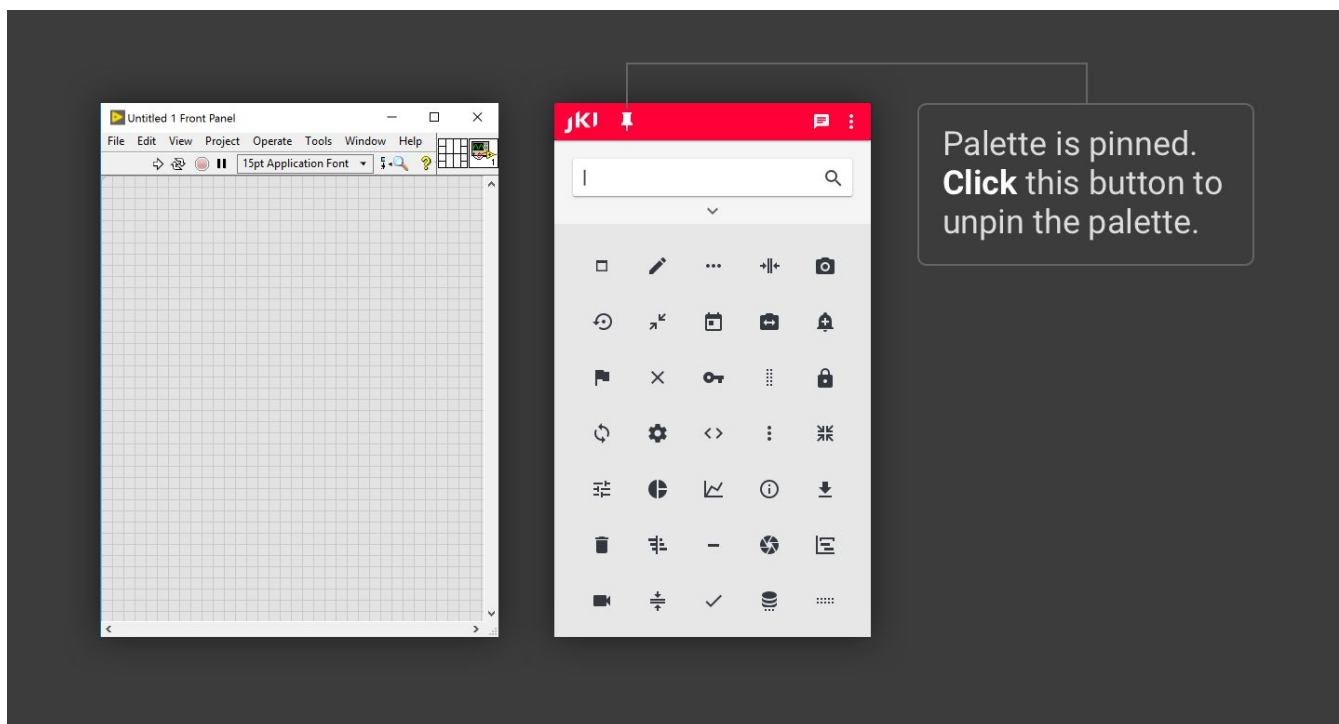




Press **Ctrl+L** again to hide the labels

Pinning the Palette Window (to Keep it Open)

The Pin icon  on the toolbar allows you to keep the JKI SDP window open by preventing it from automatically closing. (This is similar to how the pin works for the built-in LabVIEW Controls and

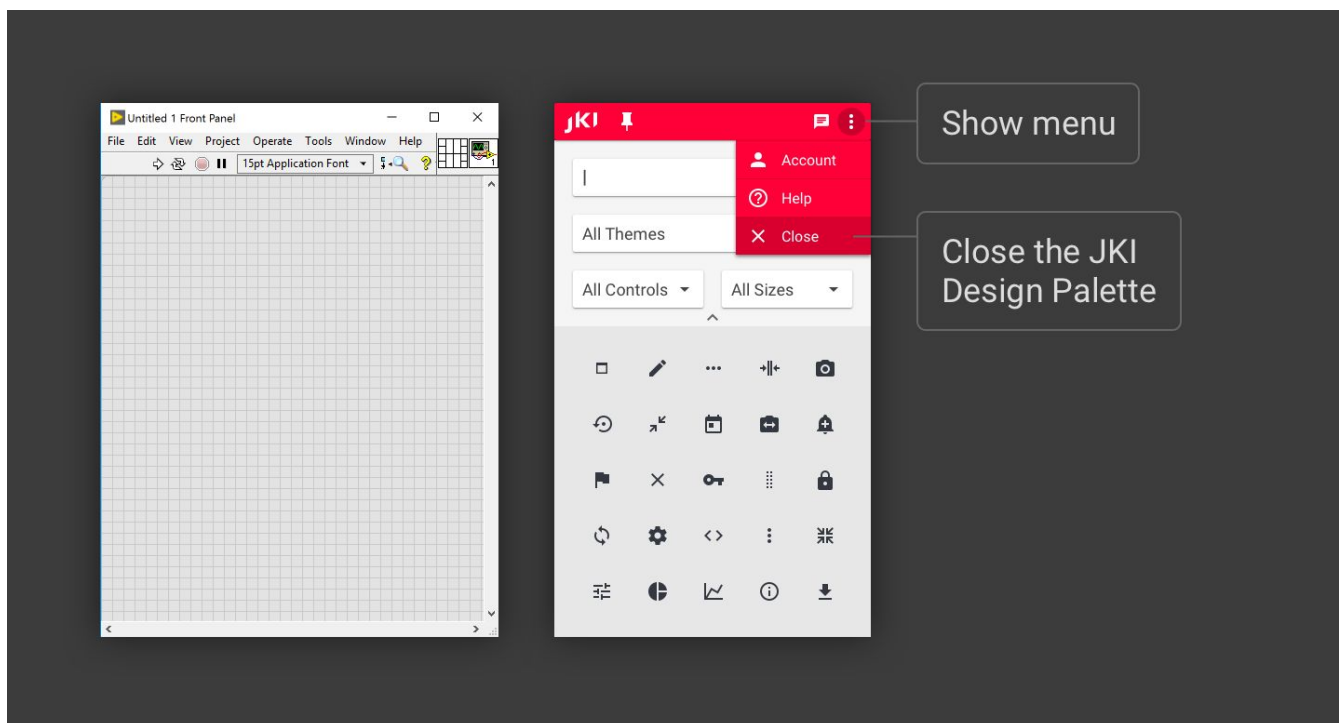
Functions Palettes.)



When you launch the JKI SDP in QuickDrop mode, the window will start out unpinned  and will close automatically after you drop an item. However, when you launch the JKI SDP from the *Tools >> JKI Design Palette* menu, the window will start out pinned  and will not automatically close.

Closing the JKI Design Palette Window

When pinned, you can close the JKI SDP window by selecting the Close inside the Hamburger menu.



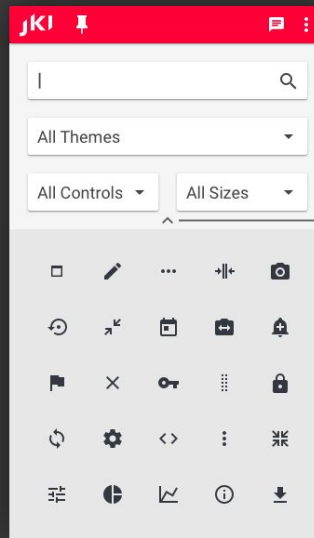
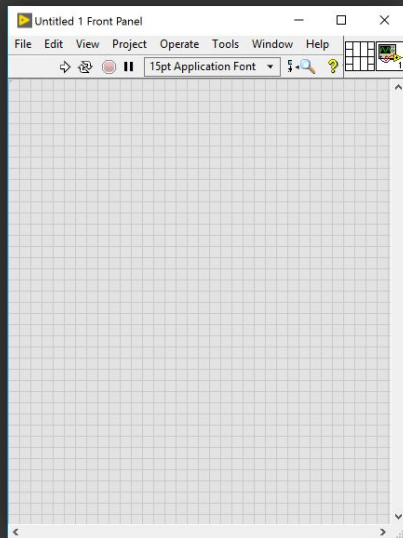
Advanced Search Filters

There are advanced filters that can be used for finding specific controls.

For example, you can filter by:

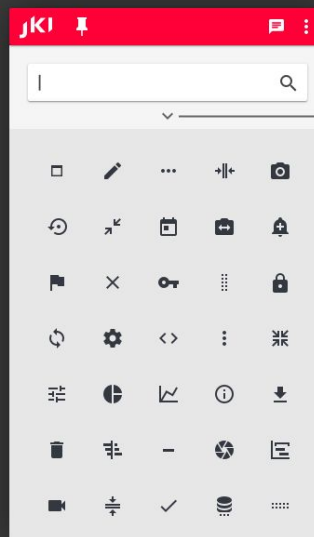
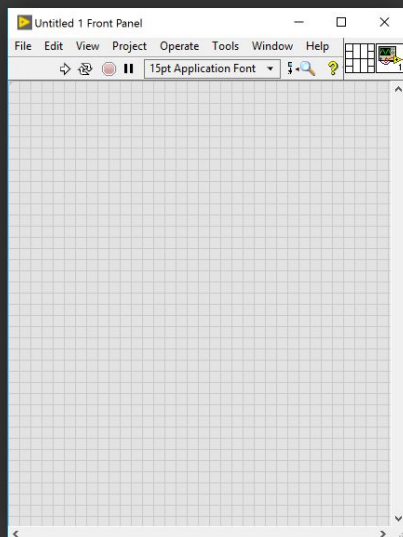
- **Theme** (e.g. JKI Flat UI Controls 2.0, Classic, System, NXG, etc.)
- **Control Type** (e.g. Boolean, Numeric, Chart, etc.)
- **Size** (e.g. 40x40, etc.)

To see the filters, click on the expander icon  located just below the Search text box.



Click the up arrow to collapse this section and hide filters.

Filters are visible

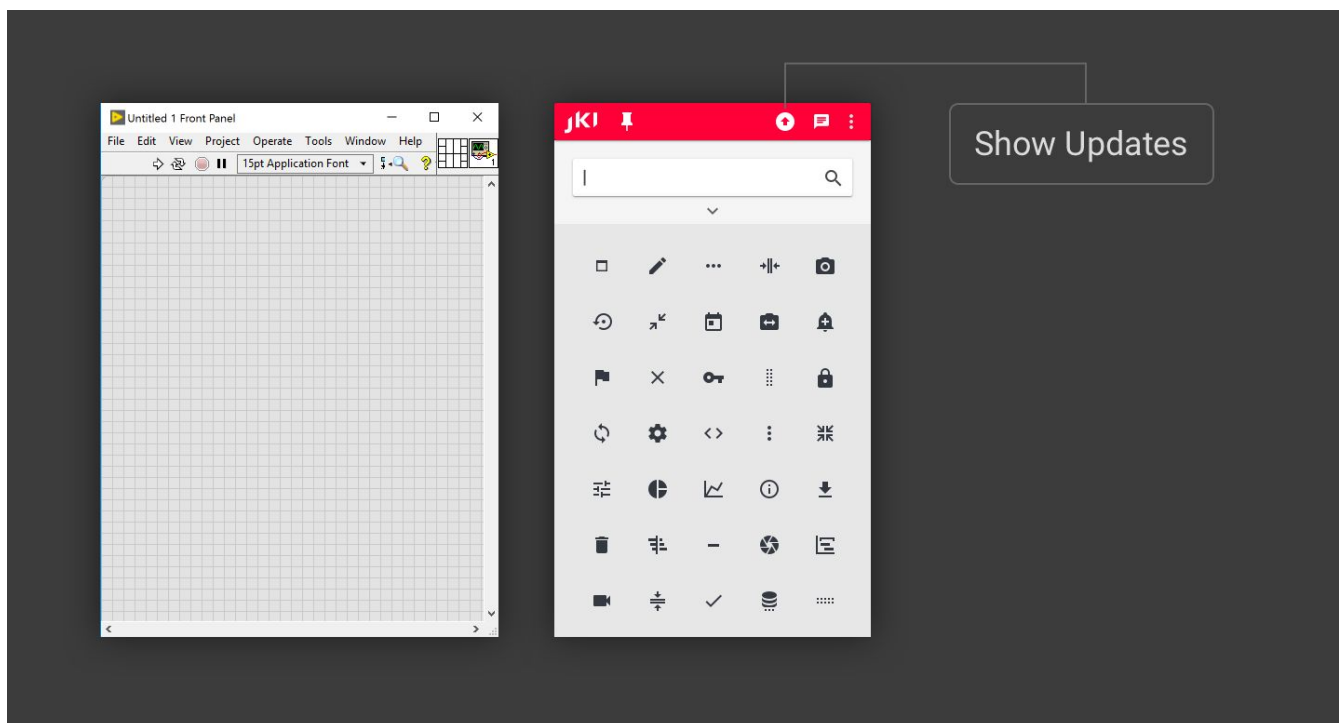


Click the down arrow to expand this section and show filters.

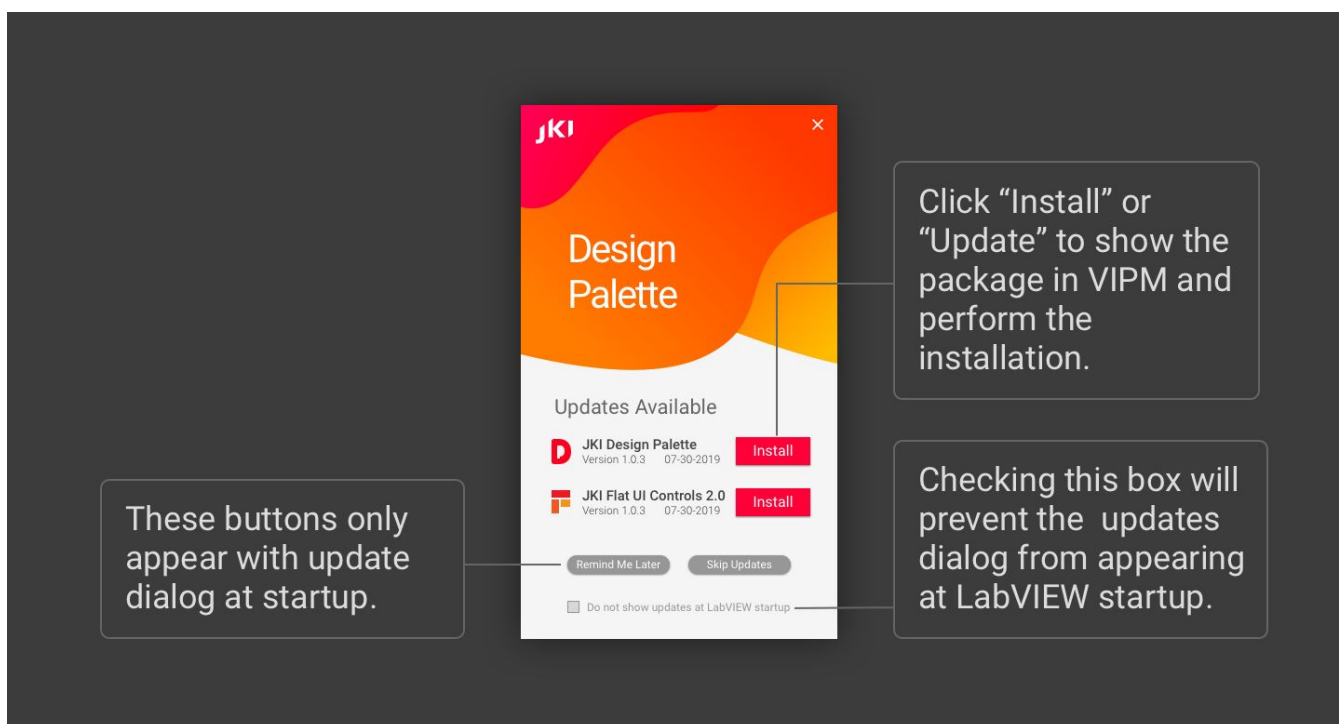
Filters are hidden

Installing Updates


When updates are available, you will see the updates  icon on the toolbar, as shown below.



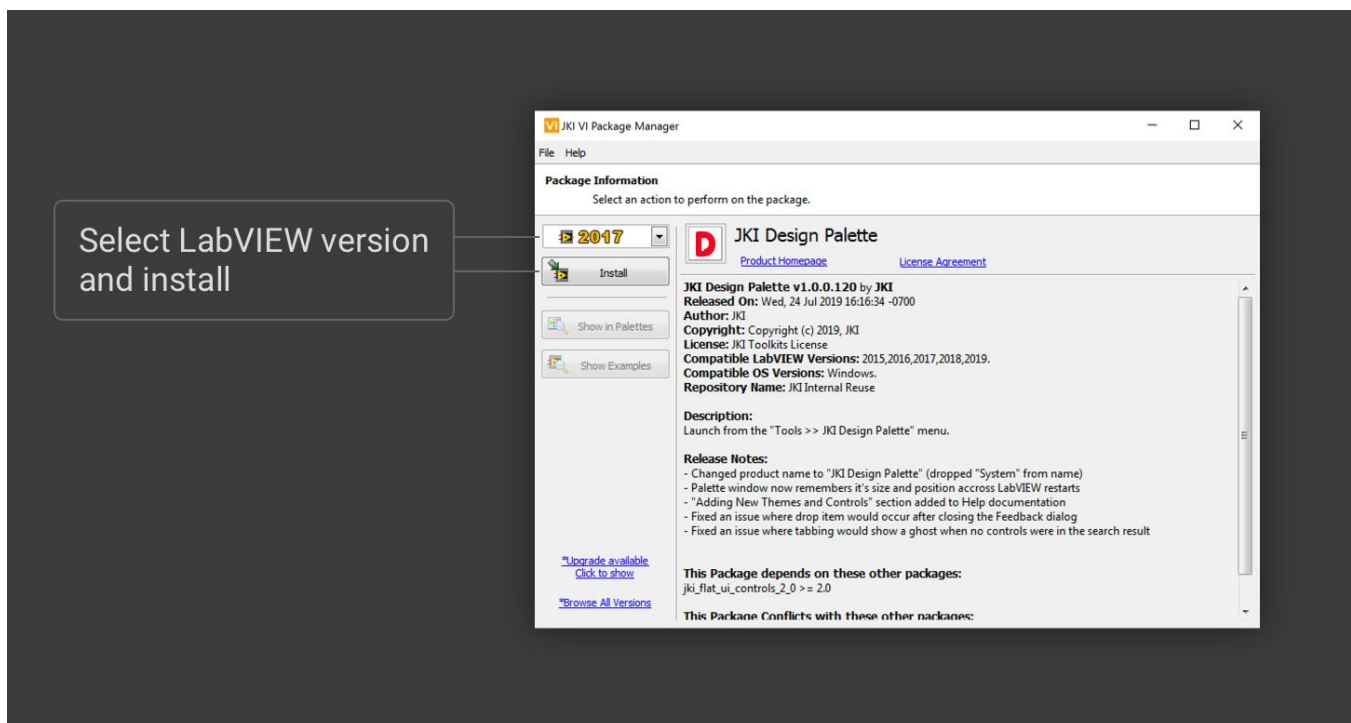
Clicking the update button will show the Updates Available dialog, below. You can click on the “Update” button of any of the updates to open the update in VIPM.



Note: This dialog will also pop up automatically when you start LabVIEW, if new updates for the JKI SDP are available. You can skip the updates shown by pressing the “Skip These Updates” button -- you

then won't see this dialog again when LabVIEW starts, until newer updates are available. You can also suppress these notifications at LabVIEW start-up, completely, by checking the "Do not show updates at LabVIEW startup" box -- you will then need to manually open the Updates Available window by clicking the Show Updates  icon on the palette toolbar, if you wish to see updates.

Click "Update" on any of the updates available, to open that update in VI Package Manager (VIPM). Once VIPM opens (shown below) the package information dialog for update you wish to install, confirm that (1) the correct LabVIEW version is selected and then (2) click on the "Upgrade" (or Install) button to proceed with the upgrade.



Resizing the Palette Window

You can resize the palette window by doing any of the following:

- Grabbing the edge of the window with the mouse and resizing
- Double-clicking on the palette's toolbar (but not on a button) to maximize it (fullscreen) -- this can be very helpful for browsing/viewing an entire theme of controls.
- Dragging the palette to the top of the screen to maximize it (fullscreen), or to the left/right edge of the screen to dock it to the left/right side of the screen.

Easter Eggs and Other Fun Stuff

How the JKI Design Palette Came to Be

The JKI Design Palette was created by [Eric Welden and Jim Kring](#), along with the JKI team, because they needed a better way to deliver the [JKI Flat UI Controls](#), one of JKI's most popular free LabVIEW add-ons. Eric and Jim were disappointed with the results of trying to package these professionally designed controls and indicators using the built in LabVIEW controls palette, which doesn't do these controls justice – they wanted to see the actual controls and indicators *while they were searching for them*. Hence, the JKI Design Palette, a visual controls palette (and much more), was born. Since then, the JKI Design Palette has quickly evolved into a powerful tool that allows LabVIEW users to *build better user interfaces in LabVIEW by design™*, and we hope it helps you, too. Enjoy!

Custom Colors

Type “I want different colors” into the search box to show color selectors that change the OFF and ON state colors of the buttons.

Interactive Mode

Type “allow interaction” into the search box to show a checkbox that allows interaction with the controls inside the JKI Design Palette, so that you can play around with the Controls, just as if they were placed on a Front Panel.

Note: Interactive Mode only works with controls and not indicators.

Adding your Own Themes and Controls

Note: Adding your own themes and controls is not officially supported, since we may be making improvements to how this works, but we wanted to tell you how to do it, so that you can make the most of the JKI Design Palette in your LabVIEW work. We hope you like it.

Installing Theme Files

Themes are stored beneath LabVIEW, in the following location:

```
<LabVIEW>\resource\JKI\Design Palette\Themes
```

To create your own theme, for example for your company named “Acme Corp”, just create a new folder such as the following:

- <LabVIEW>\resource\JKI\Design Palette\Themes\Acme Corp

Inside that folder, place your controls as *.ctl (Custom Control) files, such as the following:

- File Path Control (Acme Corp).ctl
- Listbox (Acme Corp).ctl

Have fun! And, if you’ve created some controls that you’d like to share with others (especially the built-in themes like Classic, System, NXG, etc.), please post them to the [JKI Design Palette Community Discussion Forum](#).

File Naming and Search Keywords

The words in the file name are used as keywords for finding search results when typing into the search box of the JKI SDP -- so, you want to name the file with keywords that users will typically use when looking for your control. So, you’ll probably want to include the following words in the filename:

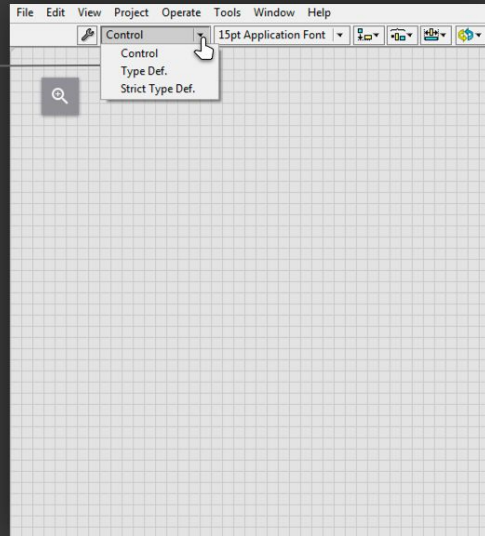
- The type of control (e.g. “Button”, “LED”, “Chart”, “Date Timestamp” etc.)
- The Theme Name (e.g. “Acme Corp”, “Classic”, “System”) since people may want to type the theme name into the search box, rather than using the Theme selector/filter drop-down list.
- “Control” or “Indicator” if your theme has both control and indicator versions of the control file

Regular Custom Control vs Type Definition

If you make your *.ctl file a “Type Def.” (type definition), then the dropped control will link to the type definition *.ctl file and will be updated accordingly, if you change the type definition file. This may or

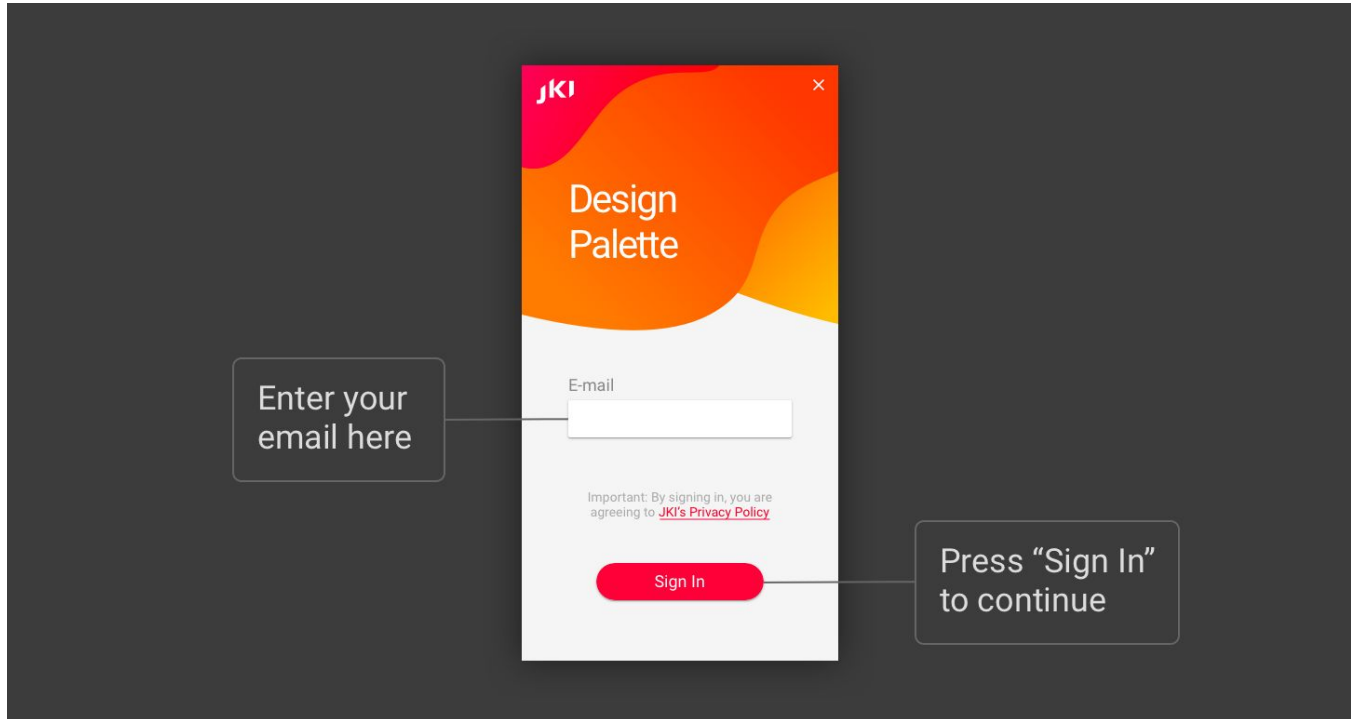
may not be desirable for your users. If you don't want the dropped instances linked to the type definition file, then be sure your *.ctl is a regular type definition.

"Regular" Control
(not a type definition)

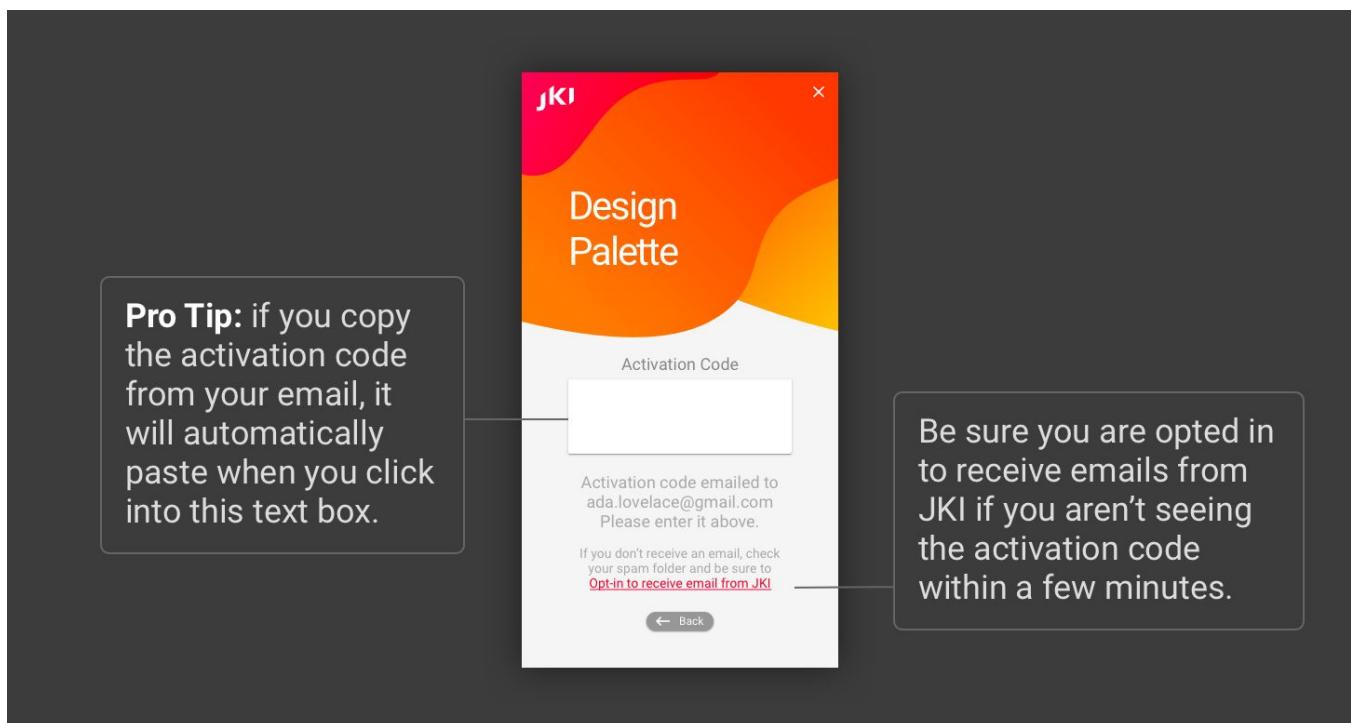


Activating the Software

You can sign in by entering your email address.



You will then receive an email with an activation code, which you can enter into the dialog.



Once you've entered the code, you're ready to go!