

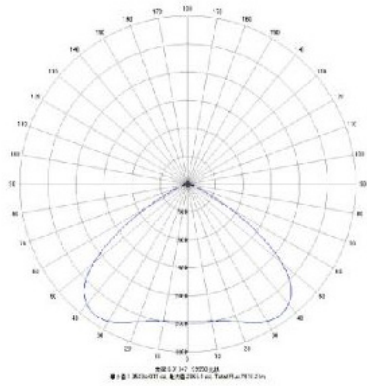
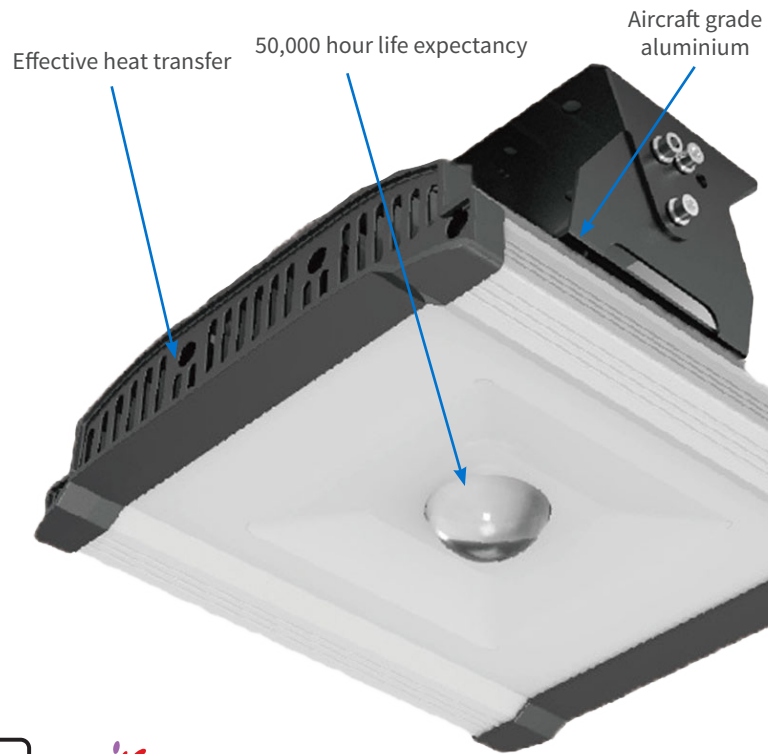


Introducing a new era
in illumination

IWE-TLB-60-80 Tunnel lighting

Key Benefits

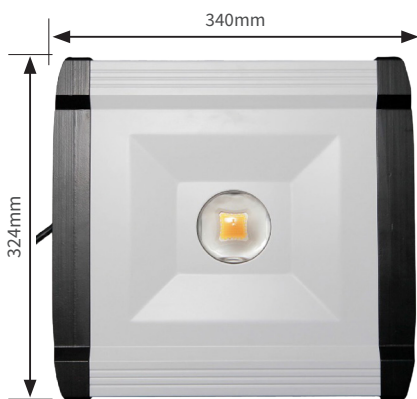
- Adopting COB source with luminous efficiency > 120LM/W.
- Beam angle: Horizontal axis> 140° Vertical axis>65°
- Adopting IP66 driver with Meanwell brand.
- Water proof: IP65 Rating.
- Warranty: 3 years warranty and 50,000 switch on/off tested.
- We provide the best lighting solution for your actual requirement.



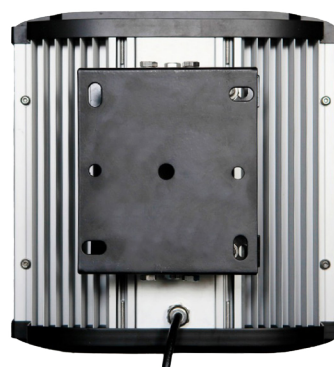
Applications

- Tunnel lighting

Model	LED	W	V	lm	Beam angle	C.T	Ra	T(h)	Hz	N.W. (Kg)
IWE-TLB-60/3.0-5.5	COB	60	90~295AC	4920-5400	80°	2700K-6500K	>70	50000	50/60	8.5
IWE-TLB-80/3.0-5.5	COB	80		6560-7200			>70	50000	50/60	8.5



Front view



Back view



Side view

Visit www.iwegroup.com.au to learn more about us and our products