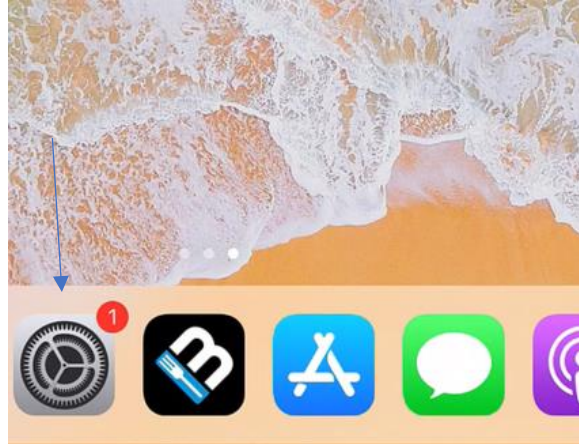
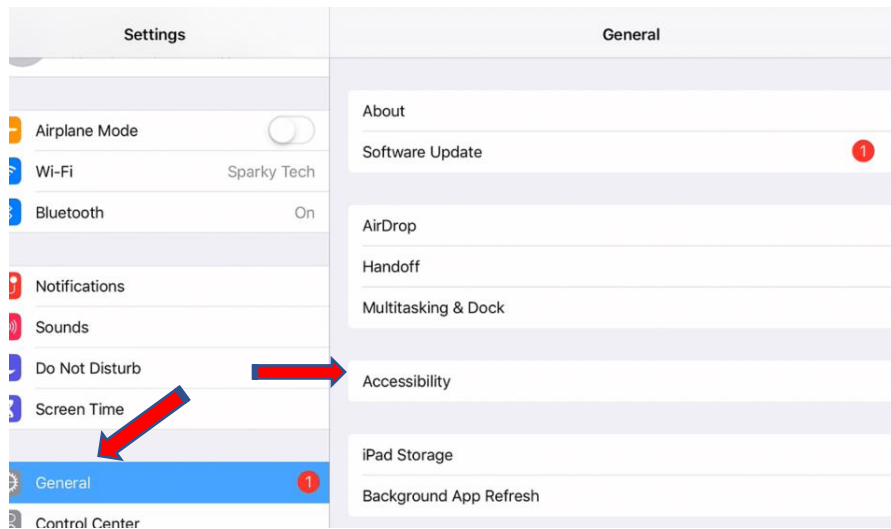


# Enabling Guided Access on iPads

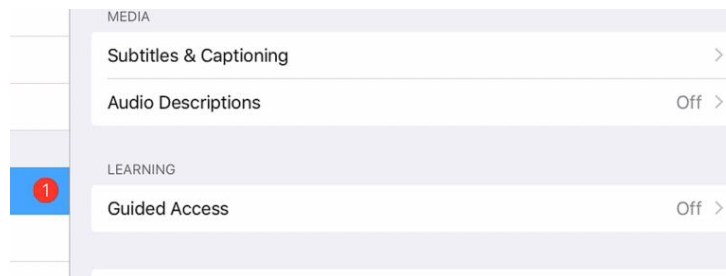
**Step One:** Go to “Settings”



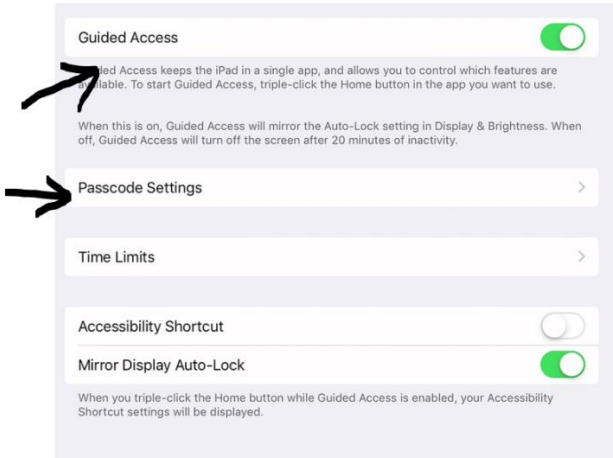
**Step Two:** Tap “General > Accessibility”



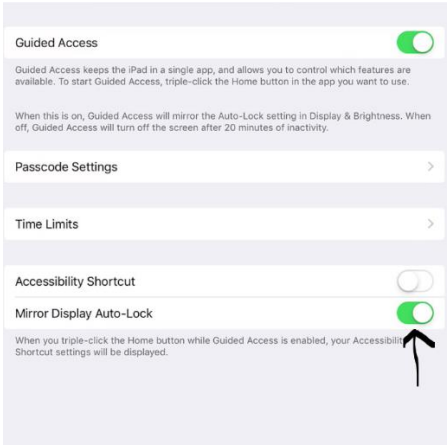
**Step Three:** Scroll Down & Tap “Guided Access”



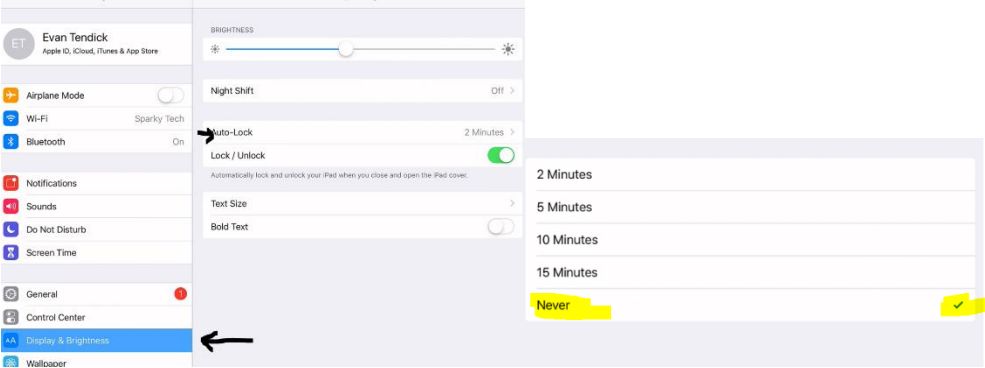
**Step Four:** Toggle 'Switch' at top to "On", then tap on "Passcode Settings" and set a passcode [Note: it is a good idea to make this a unique passcode and, obviously, something you will remember! – Failure to enter the correct passcode can result in having the iPad lock up]



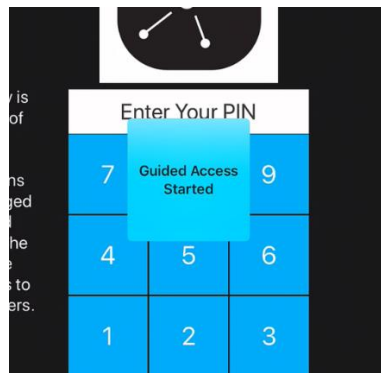
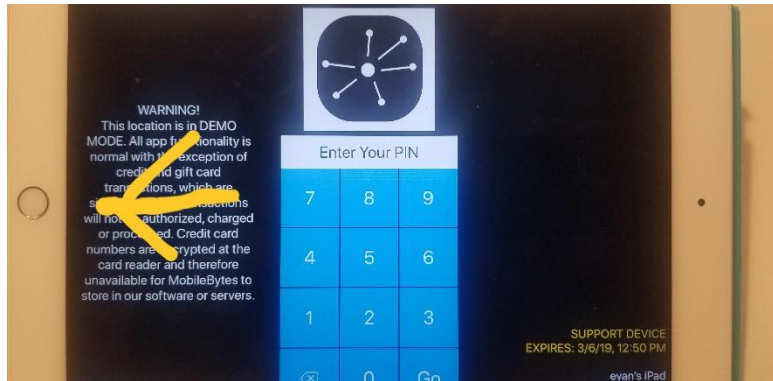
**Step Five:** Once your passcode is saved, toggle "On" the "Mirror Display Auto-Lock" Option



**Step Six:** Exit back to the Settings Page and tap on "Display & Brightness", then change the "Auto-Lock" drop down to "Never"



**Step Seven:** Access the MobileBytes POS app and triple-click the “Home” Button – you should immediately see a box informing you the Guided Access has been enabled.



To Exit Guided Access, triple-click the “Home” Button again; you will be prompted to enter your passcode; you will then be given another opportunity to either End or Re-enable Guided Access. As long as the ‘Switch’ is toggled on, you can always re-enable G.A. by triple-clicking the “Home” Button

