

VR80 CA-MRB SHOTGUN

RIA
IMPORTS

USERS MANUAL



**WARNING: READ THE INSTRUCTIONS AND
SAFETY PRECAUTIONS IN THIS MANUAL
CAREFULLY BEFORE USING THE FIREARM.**

ROCK ISLAND ARMORY

USERS MANUAL VR80 CA-MRB SHOTGUN SAFETY, INSTRUCTION AND PARTS MANUAL



As a responsible owner of this firearm, you must read the instructions and warnings in this manual carefully. Before using this firearm, make sure you understand thoroughly the contents of this manual.

This manual must always be in the firearms carrying case whenever the owner/user brings it or when it transfers ownership. A copy of this manual is available upon request from:



RIA Recommendation For Semi Auto Shotgun Break In Procedures

- ***Quality shotshells only***
- ***Minimum 2 ³/₄" , 3 dram shotshell to be used***
- ***Minimum velocity 1250 fps***
- ***Minimum 1 ¹/₈ oz of shot***
- ***Expect some malfunctions in first 25-50 rounds***
- ***Minimum of 250 rounds before trying lighter load***
- ***Avoid light recoil or reduced recoil loads***
- ***Due to variation in ammo and firearms some gun may work with lighter loads and some may not***
- ***Please complete break in period of 100 rounds with recommended loads before sending warranty claim for cycling issues***
- ***YouTube has several videos on customization for lighter loads however custom work may void warranty***

ARMSCOR PRECISION INTERNATIONAL

150 N Smart Way, Pahrump NV 89060

E-mail: support@armscor.com

TABLE OF CONTENTS

- 1 Statement of Liability
- 1 State-By-State Warnings
- 2 Safety Precautions
- 3 Important Warnings

HEALTH&SAFETY

- 4 Tech Specs
- 5 Basic Parts
- 6 Exploded Views

ABOUT THE FIREARM

Operating Instructions

Magazine Replacing / Loading / Firing / Safety	7
Unload Unfired Ammunition	9
Disassembly	10
Installing Magazine Capacity Plug	12

Daxos and Buffer Bolt

Usage of Choke Tubes

Ordering Parts

Warranty

MAINTENANCE

STATEMENT OF LIABILITY

This shotgun is classified as a firearm or dangerous weapon. It is expressly understood that we assume no liability for its resale or unsafe handling under local laws and regulations. Armscor assumes no responsibility for physical injury or property damage resulting from either intentional or accidental discharge, or for the function of the firearm subjected to influence beyond their control. Armscor will honor no claims which may result from careless handling, unauthorized adjustments, defective or improper ammunition, corrosion or neglect. Examine your firearm carefully at the time of purchase. It should be forwarded immediately to the factory or its sales agent if any adjustment of any kind is required.

State-By-State Warnings



CALIFORNIA STATE WARNING

CHILDREN ARE ATTRACTED TO AND CAN OPERATE FIREARMS THAT CAN CAUSE SEVERE INJURIES OR DEATH. PREVENT CHILD ACCESS BY ALWAYS KEEPING FIREARMS LOCKED AWAY AND UNLOADED WHEN NOT IN USE. IF YOU KEEP A LOADED FIREARM WHERE A CHILD OBTAINS AND IMPROPERLY USES IT, YOU MAY BE FINED OR SENT TO PRISON. IT IS UNLAWFUL TO USE A MAGAZINE WITH A CAPACITY OVER 10 ROUNDS.



MASSACHUSETTS STATE WARNING

IT IS UNLAWFUL TO CARRY ANY MAGAZINE OR BELT WHICH HOLDS MORE THAN TEN ROUNDS, UNLESS AUTHORITY IS GRANTED BY THE BOSTON POLICE COMMISSIONER. IT IS UNLAWFUL TO STORE OR KEEP A FIREARM, RIFLE, SHOTGUN OR MACHINE GUN IN ANY PLACE UNLESS THAT WEAPON IS EQUIPPED WITH A TAMPER RESISTANT SAFETY DEVICE OR IS STORED OR KEPT IN A SECURELY LOCKED CONTAINER.



NEW YORK STATE WARNING

IT IS UNLAWFUL TO CARRY ANY MAGAZINE OR BELT WHICH HOLDS MORE THAN SEVEN ROUNDS, UNLESS AUTHORITY IS GRANTED BY THE STATE OF NEW YORK. THE USE OF A LOCKING DEVICE OR SAFETY LOCK IS ONLY ONE ASPECT OF RESPONSIBLE FIREARMS STORAGE FOR INCREASED SAFETY, FIREARMS SHOULD BE STORED UNLOADED AND LOCKED IN A LOCATION THAT IS BOTH SEPARATED FROM THEIR AMMUNITION AND INACCESSIBLE TO CHILDREN AND OTHER UNAUTHORIZED PERSONS.

02 | SAFETY PRECAUTIONS

Safety must be the first and constant consideration of every person who handles firearms and ammunition. The person with a firearm in his possession has an important responsibility. He/She must know how to use his/her firearm safely:

1. Always keep the muzzle pointed at a safe direction. Watch the muzzle at all times. Never point a gun, accidentally or intentionally, at any person or anything you do not intend to shoot. Identify the target before shooting; do not shoot at sounds.
2. Always treat a gun as if it is loaded – it may be!
3. Keep your finger off the trigger while operating the action and at all other times until you are ready to shoot.
4. Keep the safety “on” or in the “safe” position at all times until you are ready to fire. Do not rely on your gun’s safety, the safety on any gun is a mechanical device and is not intended as a substitute for common sense or safe gun handling.
5. Learn how your gun functions and handles. If you do not thoroughly understand the proper use and care of your gun, seek the advice of someone who is knowledgeable.
6. Do not alter or modify any part of the firearm.
7. Store guns unloaded, separate from any ammunition, and out of the reach of children.
8. Be sure the barrels is clear of any obstructions before loading. Make it a habit to check the barrel every time before loading.
9. Be sure you have and use the proper ammunition.
10. Wear protective shooting glasses, adequate ear protection and gloves when shooting.
11. Never climb or jump over anything, such as a tree, fence, or ditch, with a loaded gun. Open the barrel, remove the shells and hand the gun to someone else or place it on the ground on the other side of the obstacle before crossing it yourself. Do not lean a gun against a tree or other object; it could fall and possibly discharge.

12. Do not shoot at a hard surface or at water. Bullet and shot can ricochet or bounce off and travel in unpredictable directions with great velocity.

13. Never transport a loaded gun. Do not place a loaded gun into a vehicle. The gun should be unloaded and placed into a case when not in use.

14. Never consume intoxicating beverages and/or drugs before or during shooting.

WARNING

DO NOT ATTEMPT TO USE ANY FIREARM WITHOUT HAVING A COMPLETE UNDERSTANDING OF ITS PARTICULAR CHARACTERISTICS AND SAFE USE. READ AND UNDERSTAND THIS MANUAL CAREFULLY BEFORE USAGE OF YOUR SHOTGUN.

WARNING

YOU SHOULD NEVER DEPEND ON A SAFETY MECHANISM OR ANY OTHER MECHANICAL DEVICE TO JUSTIFY CARELESS AND IMPROPER HANDLING.

WARNING

THIS FIREARM WAS MANUFACTURED TO PERFORM PROPERLY WITH THE ORIGINAL PARTS AND MAGAZINES AS DESIGNED. PLEASE MAKE SURE ANY PARTS YOU BUY ARE INSTALLED CORRECTLY AND THAT NEITHER REPLACEMENTS NOR ORIGINALS ARE ALTERED OR CHANGED. PUTTING A FIREARM TOGETHER INCORRECTLY OR WITH MODIFIED PARTS CAN RESULT IN DAMAGED FIREARM, DANGER, AND INJURY OR DEATH. ANY MODIFICATIONS TO FIREARM WILL VOID FACTORY WARRANTY.

03 | SAFETY PRECAUTIONS

WARNING

CHILDREN ARE ATTRACTED TO FIREARMS, AND MIGHT BE ABLE TO OPERATE THEM, THEY CAN CAUSE SEVERE INJURIES AND EVEN DEATH, TO THEMSELVES OR OTHERS. PREVENT CHILDREN FROM ACCESS, ALWAYS KEEP YOUR FIREARMS LOCKED AWAY, UNLOADED AND OUT OF REACH OF CHILDREN WHEN NOT IN USE AT ANY TIME.

WARNING

THE FIREARM SHOULD BE STORED IN ROOMS WITH A DRY ATMOSPHERE AND MINIMUM HUMIDITY. IT SHOULD NOT BE STORED ENCASED IN LEATHER OR ANYTHING THAT WILL ATTRACT AND HOLD MOISTURE, CAUSING IT TO RUST.

WARNING

DO ALL PROCEDURES (DISASSEMBLY, CLEANING AND OTHER MAINTENANCE) ONLY WHEN THE FIREARM IS UNLOADED. BE SURE THAT THE MAGAZINE TUBE, RECEIVER AND CHAMBER ARE EMPTY WHILE YOU ARE PROCEEDING. CHECK EJECTION PORT, LOADING PORT AND CHAMBER VISUALLY.

WARNING

ALL PRODUCTS HAVE 3" (76MM) CHAMBERS (EXEPT OTHERWISE STATED). YOU CAN SEE MARKS ABOUT GAUGES AND CHAMBER LENGHT ON THE GUN. EVERY SHOTGUN HAS PASSED DURABILITY TEST WITH SPECIAL HIGH PRESSURE CARTRIDGES.

WARNING

WHEN STORING THE GUN FOR A PROLONGED PERIOD OF TIME, IT IS NECESSARY TO OIL IT HEAVILY WITH AN ACID-FREE LUBRICANT. THE EXTERNAL PARTS MUST BE COATED WITH AN ANTI-RUST OIL OR GREACE TO PREVENT MOISTURE CAUSING THE PARTS TO RUST AND MALFUNCTION. BEFORE USAGE, THE SHOTGUN MUST BE CLEANED AND WIPED DRY AGAIN.

04 | TECH SPECS

Model	VR80 CA-MRB
Caliber	12 Gauge
Chamber	2 ³ / ₄ / 3"
Action	Semi Automatic
Capacity	5 Rounds
Choke	Full, Modified and Improved Cylinder
Barrel	Contoured
Barrel Length	500mm / 20"
Overall Length	990mm / 39"
Overall Width	40mm / 1.6"
Overall Height	230mm / 9"
Rear Sight	Serration On Receiver
Weight, Empty	3.35 kg / 7.39 lbs
Weight, Loaded	3.85 kg / 8.49 lbs
Finish	Black Chrome
Stock	Polymer Buttstock With Rubber Buttpad

CALIBER



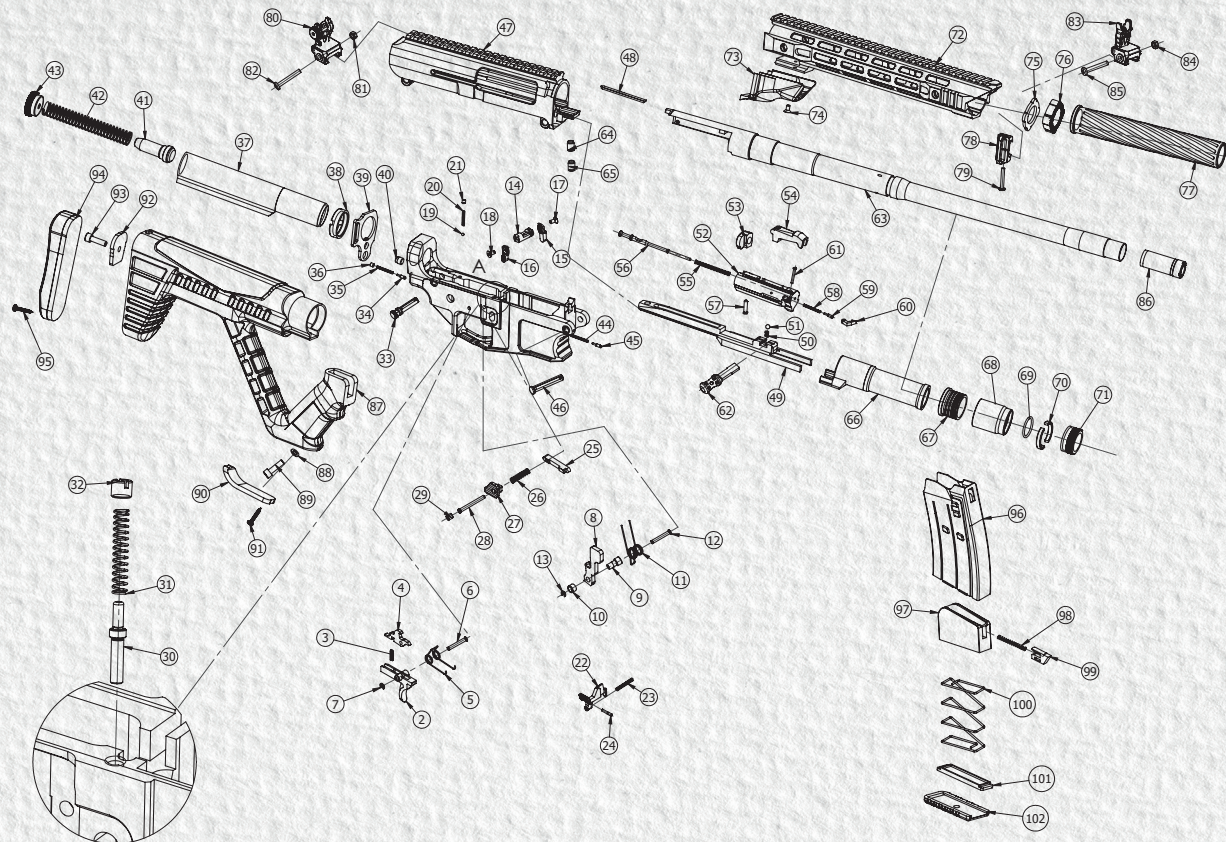
05 | BASIC PARTS

P.NO	PART NAME
1	Lower Receiver
2	Trigger
3	Disconnecter Spring
4	Disconnecter
5	Trigger Spring
6	Trigger Pin
7	Crescent washer
8	Hammer
9	Hammer Pin Sleeve, Male
10	Hammer Pin Sleeve, Female
11	Hammer Spring
12	Hammer Pin
13	Crescent washer (Optional)
14	Safety
15	Safety Lever
16	Safety Lever
17	Safety Retaining Screw
18	Safety Retaining Screw
19	Safety Detent
20	Safety Spring
21	M4 Screw
22	Bolt Catch
23	Bolt Catch Spring
24	Bolt Catch Pin
25	Magazine Catch
26	Magazine Catch Spring
27	Magazine Catch Button
28	Magazine Catch Screw
29	M6 Screw
30	MRB Pin
31	MRB Spring
32	MRB Pin Screw
33	Takedown Pin
34	Extractor Spring Pin
35	Extractor Spring
36	M4 screw
37	Stock Support
38	Pivot Nut

P.NO	PART NAME
39	Sling Plate
40	Detent Ball
41	Bolt Buffer
42	Bolt Return Spring
43	Lock Ring
44	Extractor Spring
45	Extractor Pin
46	Pivot Pin
47	Upper Receiver
48	Pin
49	Slide Carrier
50	Ball spring
51	5 Ø ball
52	Bolt
53	Buffer Bolt System
54	Lock
55	Firing Pin Return Spring
56	Firing Pin
57	Firing Pin Retaining Pin
58	Extractor Spring
59	Extractor Spring Pin
60	Extractor
61	Extractor Spring Pin
62	Cocking Handle
63	Barrel with Barrel Extension
64	M8 screw
65	M8 screw
66	Slide with Slide Extension
67	Gas Piston
68	Gas Block
69	Gas Block O-Ring
70	Gas Block Screw
71	Gas System Retaining Nut
72	Fore End
73	Handguard
74	Handguard Retaining Screw
75	Handguard Pivot Nut
76	Handguard Pivot Polymer Nut

P.NO	PART NAME
77	Barrel Shroud
78	Sling Swivel
79	Sling Swivel Screw
80	Flip-up Assembly (Rear)
81	Flip-up Nut (Rear)
82	Flip-up Screw (Rear)
83	Flip-up Assembly (Front)
84	Flip-up Nut (Front)
85	Flip-up Screw (Front)
86	Mobile Choke
87	Fixed Buttstock
88	Washer
89	M6 screw
90	Pistol Grip Cap
91	Pistol Grip Cap Screw
92	Custom Washer
93	M6 screw
94	Recoil Pad
95	Recoil Pad Screw
96	Magazine
97	Magazine Follower
98	Magazine Follower Extractor Spring
99	Magazine Follower Extractor
100	Magazine Spring
101	Magazine Base Plate Retainer
102	Magazine Base Plate

06 | EXPLODED VIEWS



MAGAZINE REPLACING / LOADING / FIRING / SAFETY

- 1) Make sure the safety is in position.
- 2) The MRB pin is shown in the figure.



- 3) Pull the MRB pin in arrow direction and lift the upper receiver.



- 4) Push the magazine release latch and remove the (empty) magazine. **(The magazine can only be removed by following steps 1-3).**



- 5) Load the magazine with proper shells and put it back in the chamber.



- 6) Push the upper receiver to its position and lock it with the MRB pin.



08 | OPERATING INSTRUCTIONS

7) Cock the gun by pulling and releasing the charging handle.



8) Bring the safety to this position.



9) Point the muzzle to a safe direction and fire the gun by pulling the trigger.



CLEARING JAMS

1) Point muzzle in safe direction!



2) Remove the jammed shell carefully.



3) Release the bolt to reload the chamber. After that turn safety to OFF position and fire the gun.



UNLOAD UNFIRED AMMUNITION

- 1) Make sure the safety is in position.
- 2) The MRB pin is shown in the figure.



- 3) Pull the MRB pin in arrow direction and lift the upper receiver.



- 4) Push the magazine release latch and remove the (loaded) magazine. **(The magazine can only be removed by following steps 1-3).**



- 5) Push the upper receiver to its position and lock it with the MRB pin.



- 6) Eject the unfired shell from the chamber by pulling the charging handle.



10 | OPERATING INSTRUCTIONS

DISASSEMBLY OF THE FIREARM



Make sure the safety is in position and the magazine is removed

1) Unscrew the barrel shroud by turning in arrow direction.

2) Pull the forend in arrow direction.



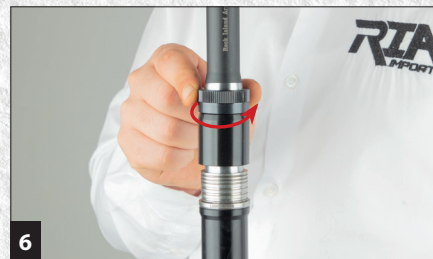
3) Push the front detaching pin and pull from the other side until it sets.

4) Push the MRB detaching pin and pull from the other side until it sets.



5) Detach upper from lower.

6) Unscrew the gas system retaining nut by turning in arrow direction.



11 | OPERATING INSTRUCTIONS

DISASSEMBLY OF THE FIREARM

7) Remove the split rings.

8) Remove the piston, slide and gas block by pulling in arrow direction.



9) Remove the charging handle by pulling it.



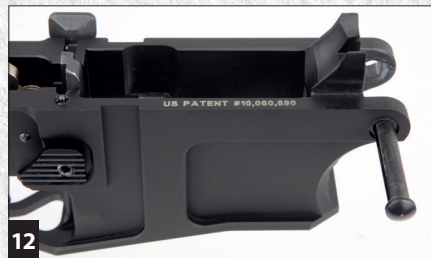
10) Remove both barrel screws with an allen wrench one at a time.



11) Pull out the bolt assembly in arrow direction.



12) The patent identification number is engraved in the receiver.



INSTALLING MAGAZINE CAPACITY PLUG

1) Push down the retaining pin at the bottom of the magazine with a tool.

2) Slide the magazine base plate in arrow direction while holding the follower in position tightly.



3) Let the spring eject and remove the follower.

4) Place the capacity reducing plug like shown. Notice positions of magazine body and plug.



5) Push spring back in the magazine body. Hold the spring in position and slide the base plate in arrow direction to lock it. Follow instructions backwards to remove the plug.



DAXOS® (Dual Axis Operation Sistem) Ambidextrous Cocking Handle Operation

Pull the charging handle



Specially developed system to avoid damages in the receiver caused by recoil. Patented by DERYA®



BufferBolt® System

Insert the charging handle from the other side



Patented ThumbHole Design for great ergonomics and simple functionality.



BufferTHS™

Make sure the handle is set.






Light Loads Piston: Heavy Loads Piston:
2¼" Shotshells 3" Shotshells
(Magnum)



USAGE OF CHOKE TUBES

The choke is what controls the openness or tightness of the pattern of your shotgun. The chart below lists the choke available (from open to tight), and the corresponding marks that indicate the choke of your specific shotgun.

MARKING	USAGE OF CHOKE TUBES		NOTCHES
*	FULL	Suitable for longer ranges (DON'T USE SLUGS!)	
***	MODIFIED	Suitable for medium ranges (DON'T USE SLUGS!)	
*****	CYLINDER	Suitable for short ranges	

The threads of the choke tube and the internal threads of the barrel should be cleaned after each use and before installation of the tube.

To install a tube, insert the tube into the barrel and tighten with your fingers. Once the tube is finger-tightened, tighten with the appropriate choke-tube wrench until the tube is snug. DO NOT over tighten or forcefully tighten with wrench.

ORDERING PARTS

Visit RIA website to browse, learn more about and purchase parts and ammunition for all of your Rock Island Armory products.



www.advancedtactical.com



ARMSCORPRECISION



ARMSCORPRECISION



ROCKISLANDARMORY



ARMSCORRIA

CALIFORNIA DISCLAIMER

This shotgun is designed and intended to conform to California law and regulation as a fixed magazine, semi automatic shotgun, in its present configuration. Be aware that aftermarket alterations made to this shotgun may risk it being considered out of compliance with California law and regulation.

Certain features of this shotgun are covered by U.S. Patent No. 10,060,690 B1, and licensed thereunder.

WARRANTY REGISTRATION

Armcor's warranty covers its firearms and parts. We offer limited lifetime warranty on our products for their intended purpose. As with any product, abuse, gunsmithing by an unqualified person and normal wear and tear are excluded. Additionally, if the firearm was modified and/or repaired by an unqualified gunsmith without permission from Armcor, then the warranty will be void. If warranty work should be required, return the firearm to the address listed below. There is no refund for the shipping cost. Gunsmithing services are available by registered Armcor Gunsmithers. Please email the address below.

To register your firearm, please go to www.rockislandarmory.com/support-center/warranty/ and complete online warranty form. In comments section, write warranty registration and press submit. You can also go to www.rockislandarmory.com and press warranty section at the bottom.

Armcor Precision International
150 North Smart Way
Pahrump, NV 89060
Email: support@armcor.com

For more information on warranty, visit www.rockislandarmory.com, or email support@armcor.com

IMPORTANT WARRANTY INFORMATION

Our Rock Island Army shotguns are warranted to function only with Factory Ammo and the Original Factory Magazine. Use of Handloads is not covered in Warranty of Repair for the function of the Firearm.

DUE TO THE FIT AND TIGHTNESS OF FIREARM, RIA RECOMMENDS A BREAK-IN PERIOD OF 500 ROUNDS.

THIS IS HOW YOU VOID YOUR WARRANTY

- * Refinishing your RIA firearm
- * Misuse, Mishandling, Dropping your RIA Firearm
- * Firing Remanufactured or Reloaded Ammunition
- * Not properly reassembling your RIA Firearm resulting in damage, ie reverse plugs!
- * Any addition of after market parts
- * Unauthorized repairs done by any other than Rock Island Armory

LIMITS ON WARRANTY (will not cover)

- * Finish, Holster wear, Scratches, Chemical damage
- * After Market Magazines
- * Damage to Factory Magazines
- * Sights not installed by Rock Island Armory
- * Recoil Springs

WE RESERVE THE RIGHT TO CHARGE FOR LABOR, PARTS AND SHIPPING TO RETURN YOUR RIA FIREARM BACK TO FACTORY SPECIFICATIONS IF IT HAS BEEN ALTERED.

RIA

IMPORTS

WWW.ROCKISLANDARMORY.COM

04/2020