



WINCH



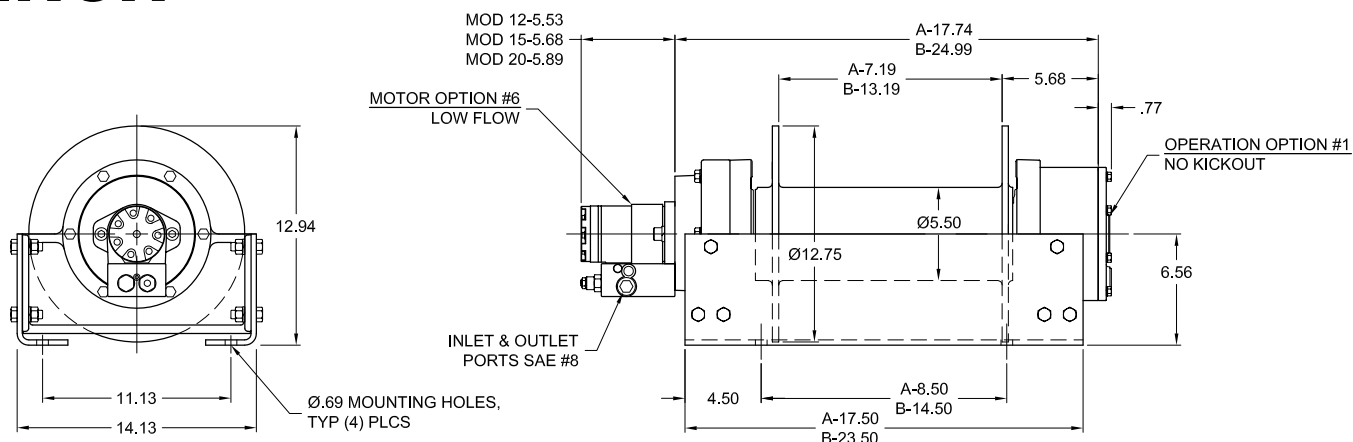
**RECOVERY
WINCHES**



RECOVERY WINCHES

MODEL 12-15-20

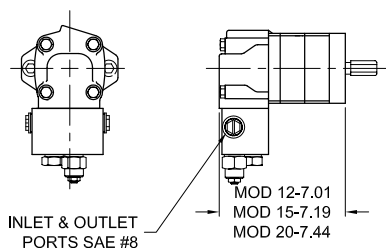
12,000 - 15,000 - 20,000 lbs.



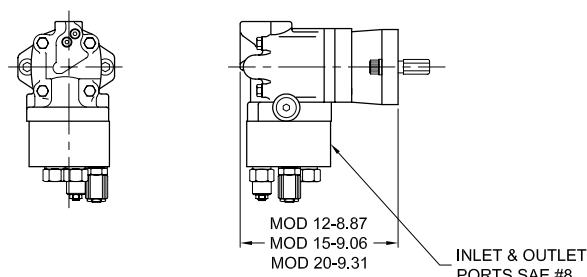
APPROX. WEIGHT: 280 lb.

OPTIONAL FEATURES

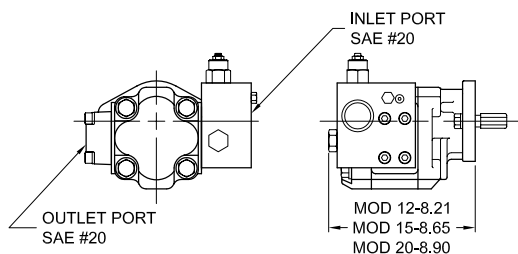
MOTOR OPTION #2
MEDIUM FLOW MOTOR



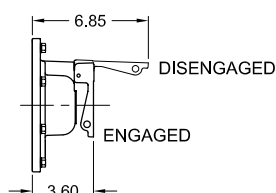
MOTOR OPTION #5
MEDIUM FLOW 2 SPD MOTOR



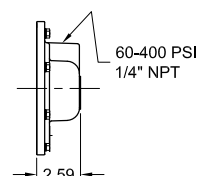
MOTOR OPTION #1
HIGH FLOW MOTOR



OPERATION OPTION #5
MANUAL KICKOUT



OPERATION OPTION #4
AIR/HYDRAULIC KICKOUT



Contact your dp sales representative for additional options and features not shown.

Because of continued product improvement, we reserve the right to make changes without notice.

⚠ WARNING	⚠ CAUTION
Winches are not intended to be used for the lifting or moving of persons.	The last 5 wraps cable must be left on the drum to assist the cable clamp in holding the load.

11135 S. James Ave.
Jenks, OK 74037
Phone: 918-298-8300
Fax: 918-298-8367
Email: sales@dovertwg.com
www.dovertwg.com





PLANETARY REDUCER MODEL 250PR

Gear Ratio: 38:1 standard
Output Torque (In-Lbs): 250,000 Intermittent
 125,000 Continuous

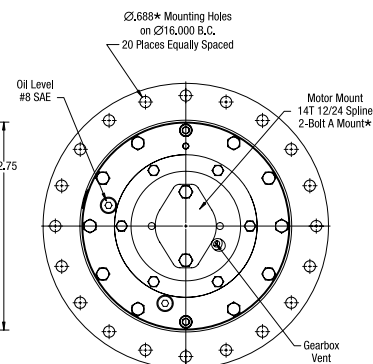
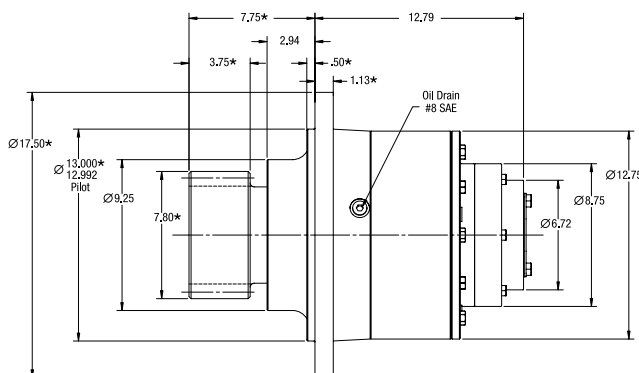
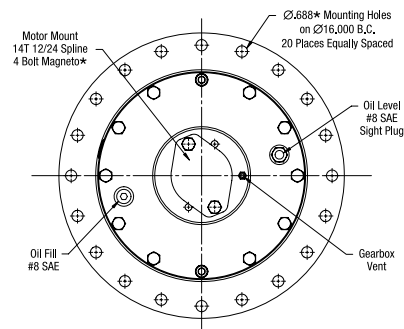
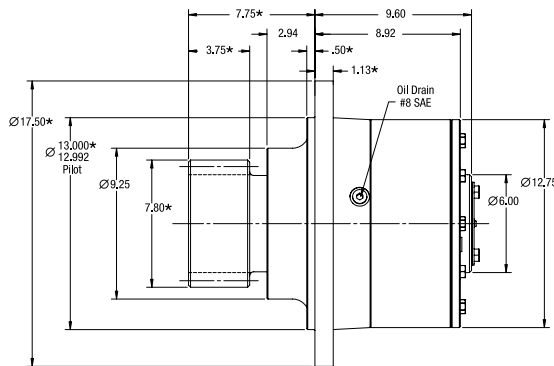
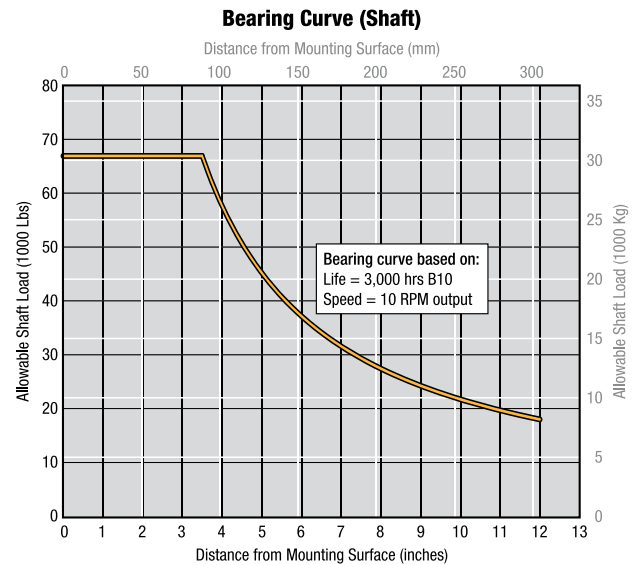


Static Brake

Torque: 0-9,000 In-Lbs
Glide-Swing: Optional

Weight (with shaft as shown)

Without Brake 388 Lbs
With Brake 411 Lbs



Because of continued product improvement, we reserve the right to make changes without notice.

⚠ WARNING	⚠ CAUTION
Winches are not intended to be used for the lifting or moving of persons.	The last 5 wraps cable must be left on the drum to assist the cable clamp in holding the load.

11135 S. James Ave.
 Jenks, OK 74037
Phone: 918-298-8300
Fax: 918-298-8367
Email: sales@dovertwg.com
 www.dovertwg.com

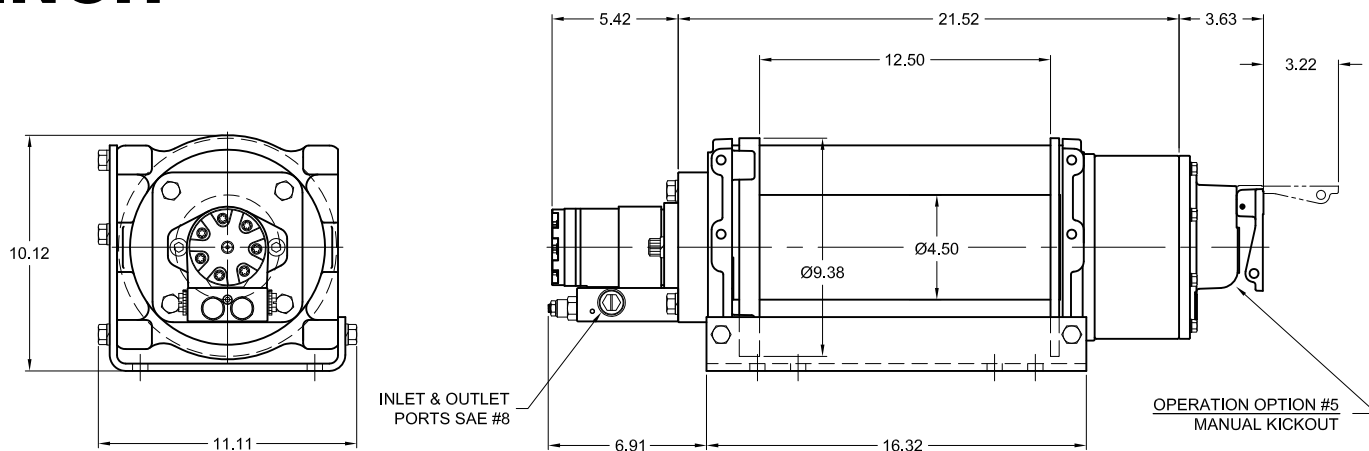




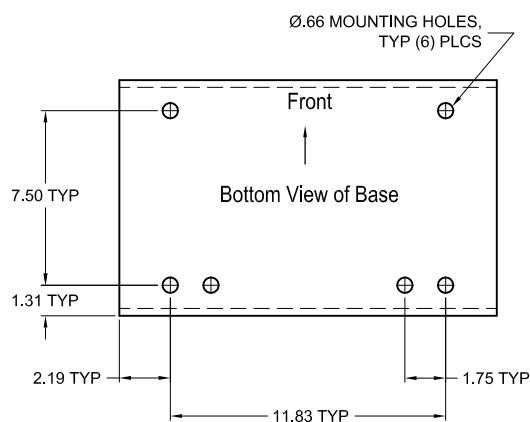
RECOVERY WINCHES

MODEL 15J

15,000 lbs.

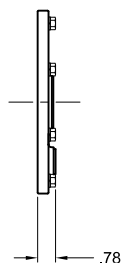


Approximate Weight: 225 lbs.

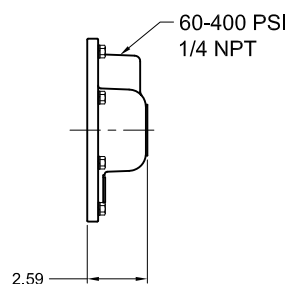


OPTIONAL FEATURES

OPERATION OPTION #1
NO KICKOUT



OPERATION OPTION #4
AIR/HYD. KICKOUT



Contact your dp sales representative for additional options and features not shown.

Because of continued product improvement, we reserve the right to make changes without notice.

⚠ WARNING	⚠ CAUTION
Winches are not intended to be used for the lifting or moving of persons.	The last 5 wraps cable must be left on the drum to assist the cable clamp in holding the load.

11135 S. James Ave.

Jenks, OK 74037

Phone: 918-298-8300

Fax: 918-298-8367

Email: sales@dovertwg.com

www.dovertwg.com

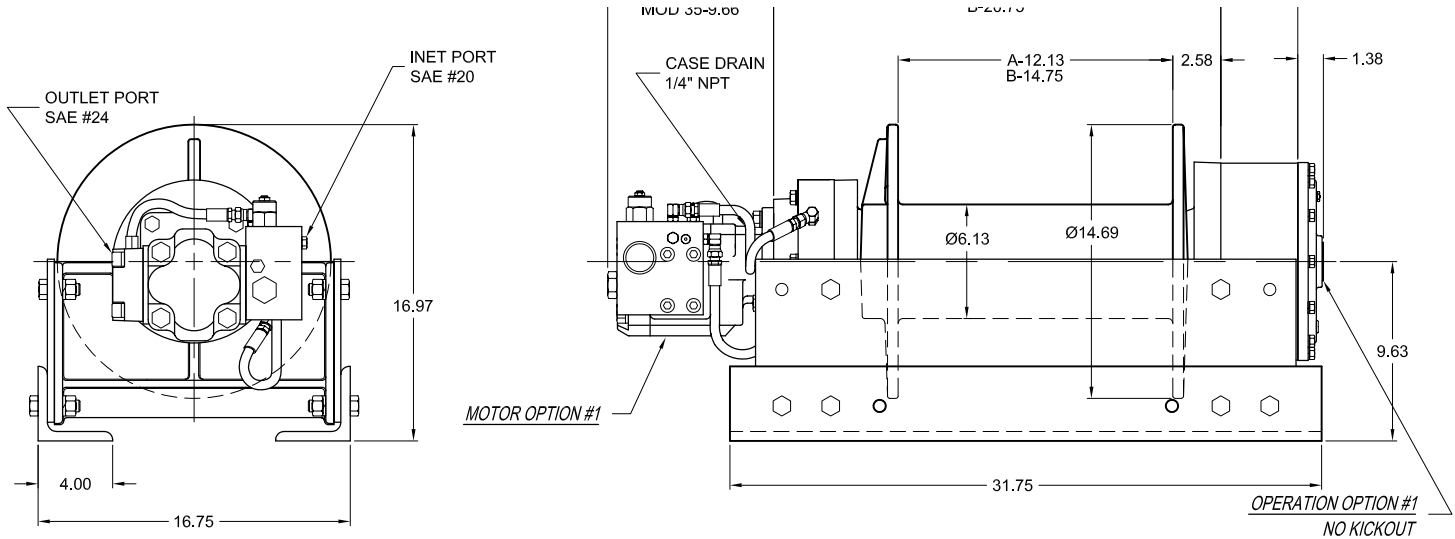




RECOVERY WINCHES

MODEL 25-30-35

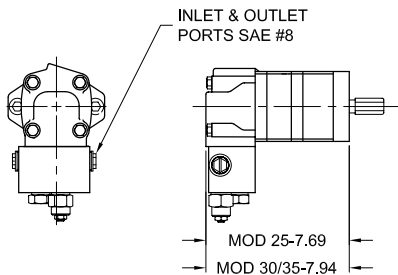
25,000 - 30,000 - 35,000 lbs.



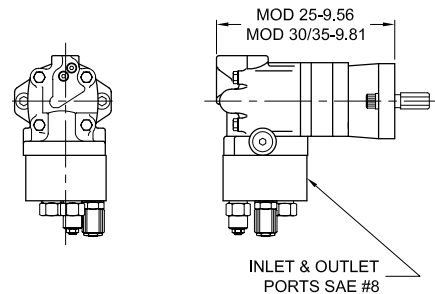
APPROX. WEIGHT: 645 lb.

OPTIONAL FEATURES

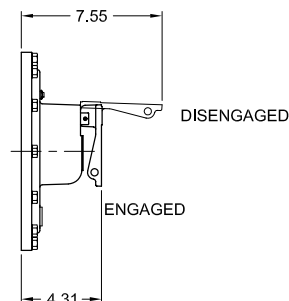
MOTOR OPTION #2 MEDIUM FLOW



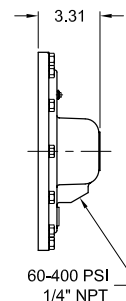
MOTOR OPTION #5 & 9 LOW FLOW 2 SPEED



OPERATION OPTION #5 MANUAL LEVER KICK OUT



OPERATION OPTION #4 AIR/HYDRAULIC KICKOUT



Contact your dp sales representative for additional options and features not shown.

Because of continued product improvement, we reserve the right to make changes without notice.

⚠ WARNING	⚠ CAUTION
Winches are not intended to be used for the lifting or moving of persons.	The last 5 wraps cable must be left on the drum to assist the cable clamp in holding the load.

11135 S. James Ave.
Jenks, OK 74037
Phone: 918-298-8300
Fax: 918-298-8367
Email: sales@dovertwg.com
www.dovertwg.com

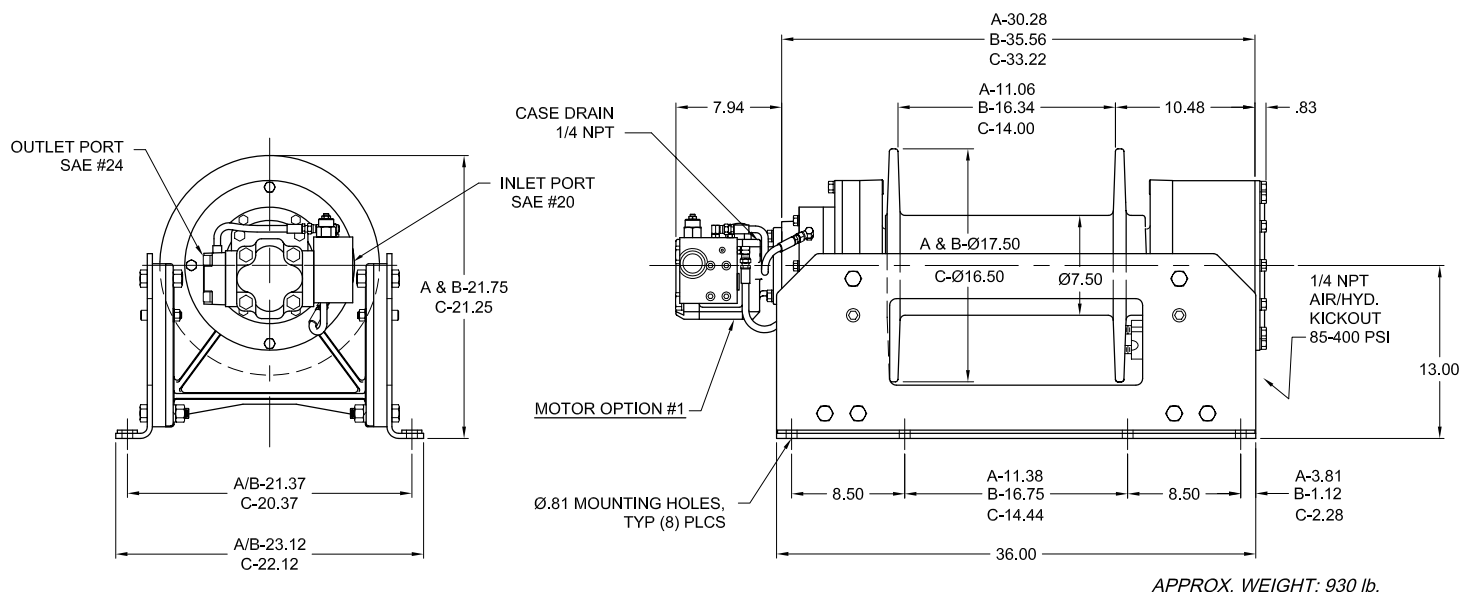




RECOVERY WINCHES

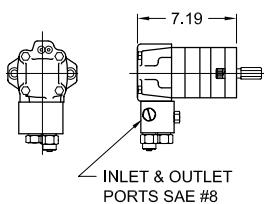
MODEL 50

50,000 lbs.

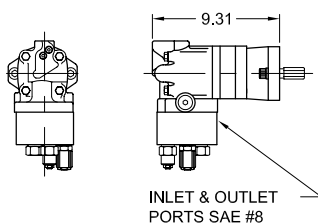


OPTIONAL MOTORS

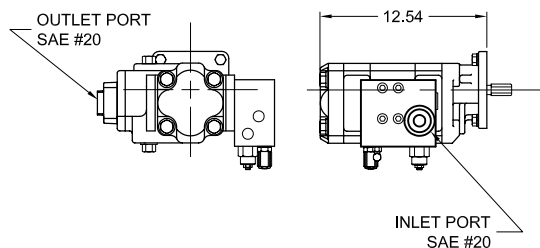
MOTOR OPTION #2
LOW FLOW MOTOR



MOTOR OPTION #3 & 9
LOW FLOW 2 SPEED MOTOR



MOTOR OPTION #5 & 6
HIGH FLOW 2 SPEED MOTOR



Contact your dp sales representative for additional options and features not shown.

Because of continued product improvement, we reserve the right to make changes without notice.

⚠ WARNING	⚠ CAUTION
Winches are not intended to be used for the lifting or moving of persons.	The last 5 wraps cable must be left on the drum to assist the cable clamp in holding the load.

11135 S. James Ave.
Jenks, OK 74037
Phone: 918-298-8300
Fax: 918-298-8367
Email: sales@dovertwg.com
www.dovertwg.com

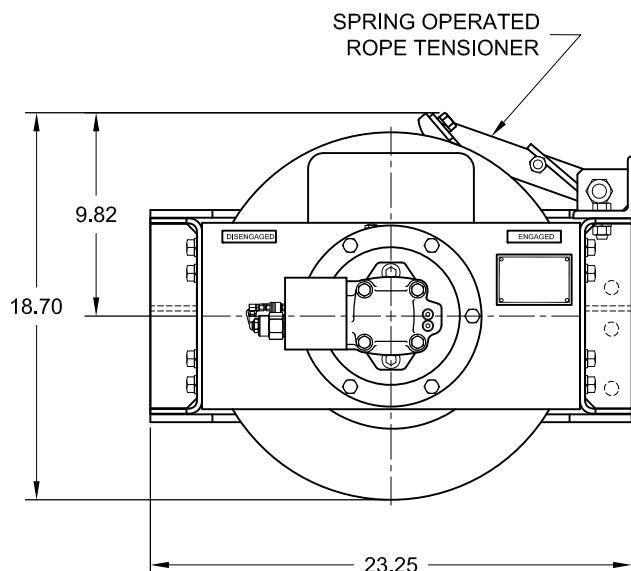
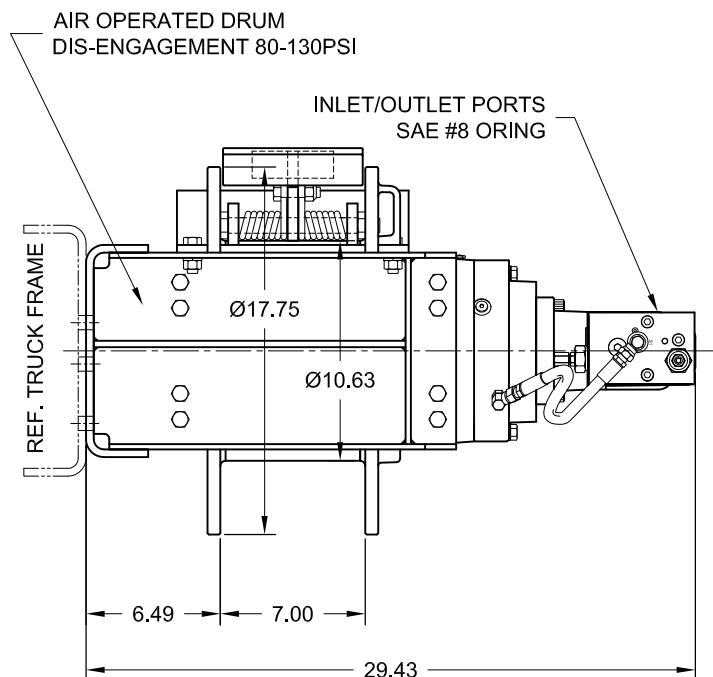




RECOVERY WINCHES

MODEL 20K SIDE MOUNT

20,000 lbs.



APPROX. WEIGHT: 510 lb.

PERFORMANCE DATA

Layer	Drum Capacity ft	Line Pull lbs	Line Speed fpm
1	33	20000	49
2	69	18200	54
3	108	16700	59
4	151	15400	64
5	197	14300	69
6	246*	13300	74

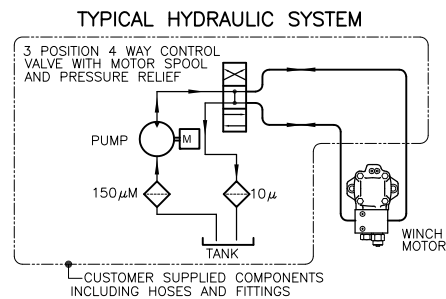
Performance is based on 30 gpm (max flow)

@ 2750 psi with Ø9/16" wire rope.

Cable capacities are in accordance with SAE J706, with the exception of the *last layer.

Actual cable capacities are usually up to 10% greater than those shown.

Other performance and motor options are available.



Contact your dp sales representative for additional options and features not shown.
The rated line pulls are for the winch only. Consult the rope manufacturer for rope ratings.

Because of continued product improvement, we reserve the right to make changes without notice.

WARNING	CAUTION
Winches are not intended to be used for the lifting or moving of persons.	The last 5 wraps cable must be left on the drum to assist the cable clamp in holding the load.

11135 S. James Ave.
Jenks, OK 74037
Phone: 918-298-8300
Fax: 918-298-8367
Email: sales@dovertwg.com
www.dovertwg.com



HAVE A QUESTION?

To speak with a TWG technical representative or to order DP WINCH® parts, call us at 918.298.8300 or visit our Web site at www.dovertwg.com.



11135 S. James Ave.
Jenks, OK 74037
Phone: 918-298-8300
Fax: 918-298-8367
Email: sales@dovertwg.com
www.dovertwg.com