



i-COMMSWORLD
CONNECT E2E

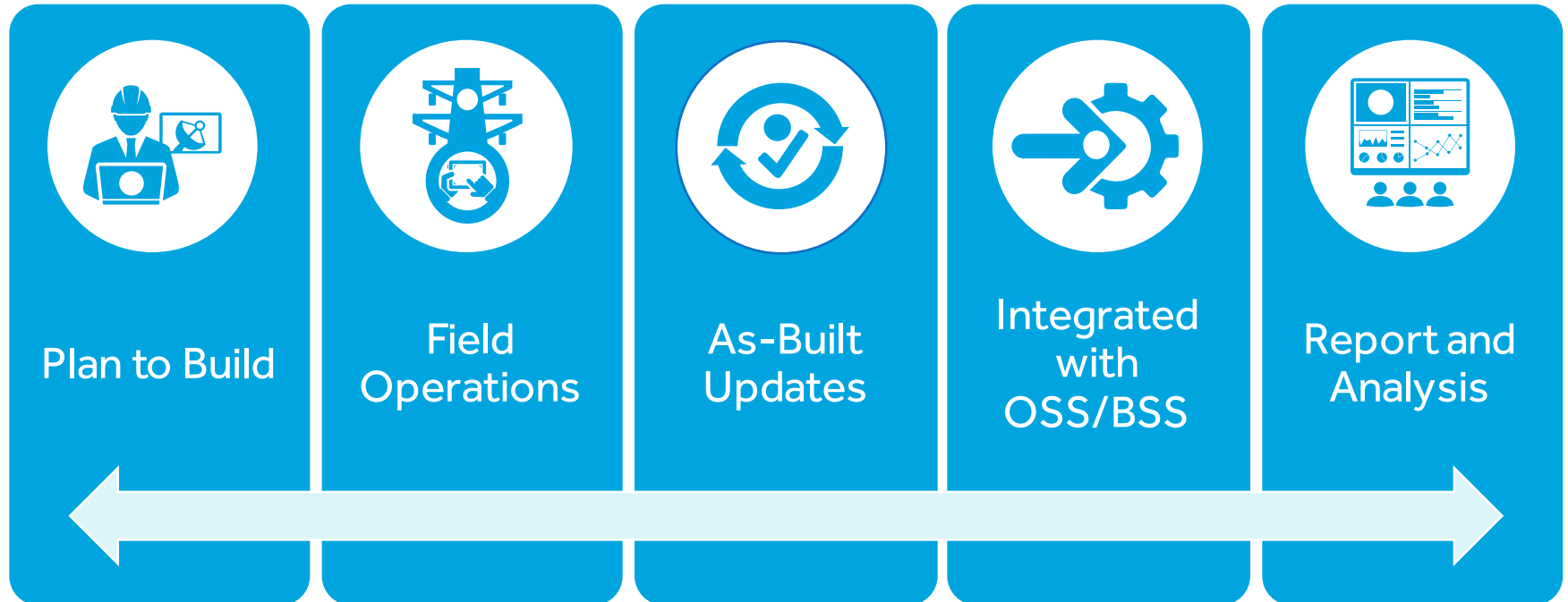
Integrated workflow orchestration to manage different project lifecycles and exchange information between different teams and systems.

i-COMMSWORLD – Business Objective

- **Provide single, seamless view of network to all business groups**
- **Minimize dependency on paper maps**
- **Update multiple network map sources and reduce effort duplication**
- **Manage the inputs from different business groups**
- **Manage large teams (contractors) and optimize work allocation**
- **Streamline the processes and adhere to a common output**
- **Facilitate project tracking for rollouts and project/program dashboard views**
- **Reduce CAPEX on new systems, enhancements to existing systems as it is not viable to make them redundant**

i-COMMSWORLD

Integrated communications world connects plan, build, and operations end-to-end

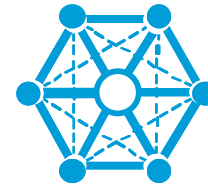


Key Features



Workflow Orchestration

- Configurable workflows for projects/tasks
- Link project/tasks to user groups
- Transitional states to approve/reject projects/tasks



Manage Network

- Network elements visibility
- View and edit the network feature info
- View connected network features
- View photos and documents associated to network features



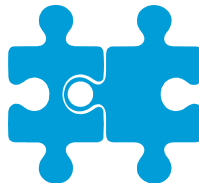
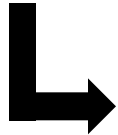
Field Operations

- Assist in field survey
- Network elements visibility
- Edit the network features online
- Take photos associated to network features



Dashboard Reports

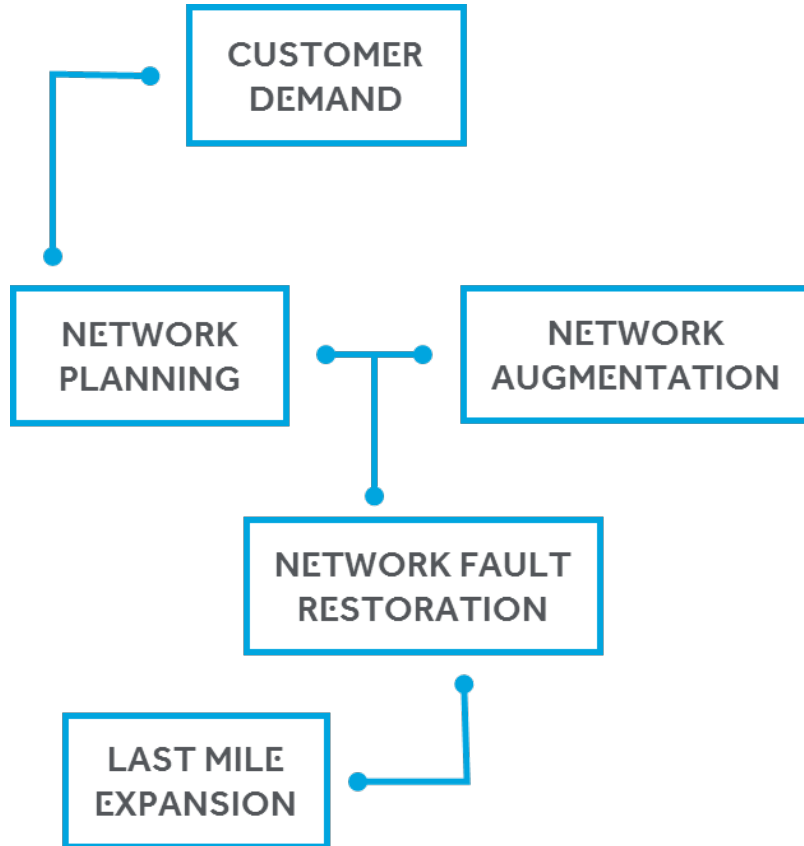
- A birds eye view of project/activities
- Monitor the progress of project/activities
- Dynamic reports on single click
- Better visibility of project teams and contractors performance



Integrations

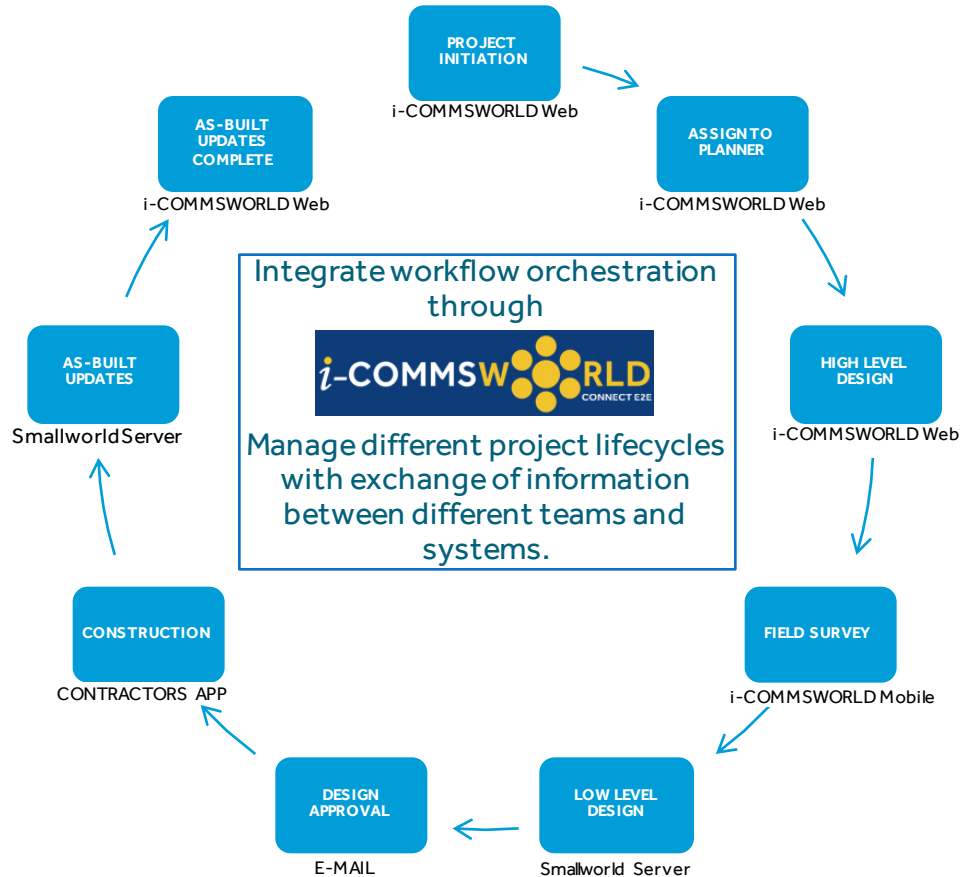
- Plugin to connect with legacy systems like Smallworld, ESRI, ENE, G/Tech
- Connect using SOAP over HTTP to CRM, SOM, SAP etc.

Business workflow



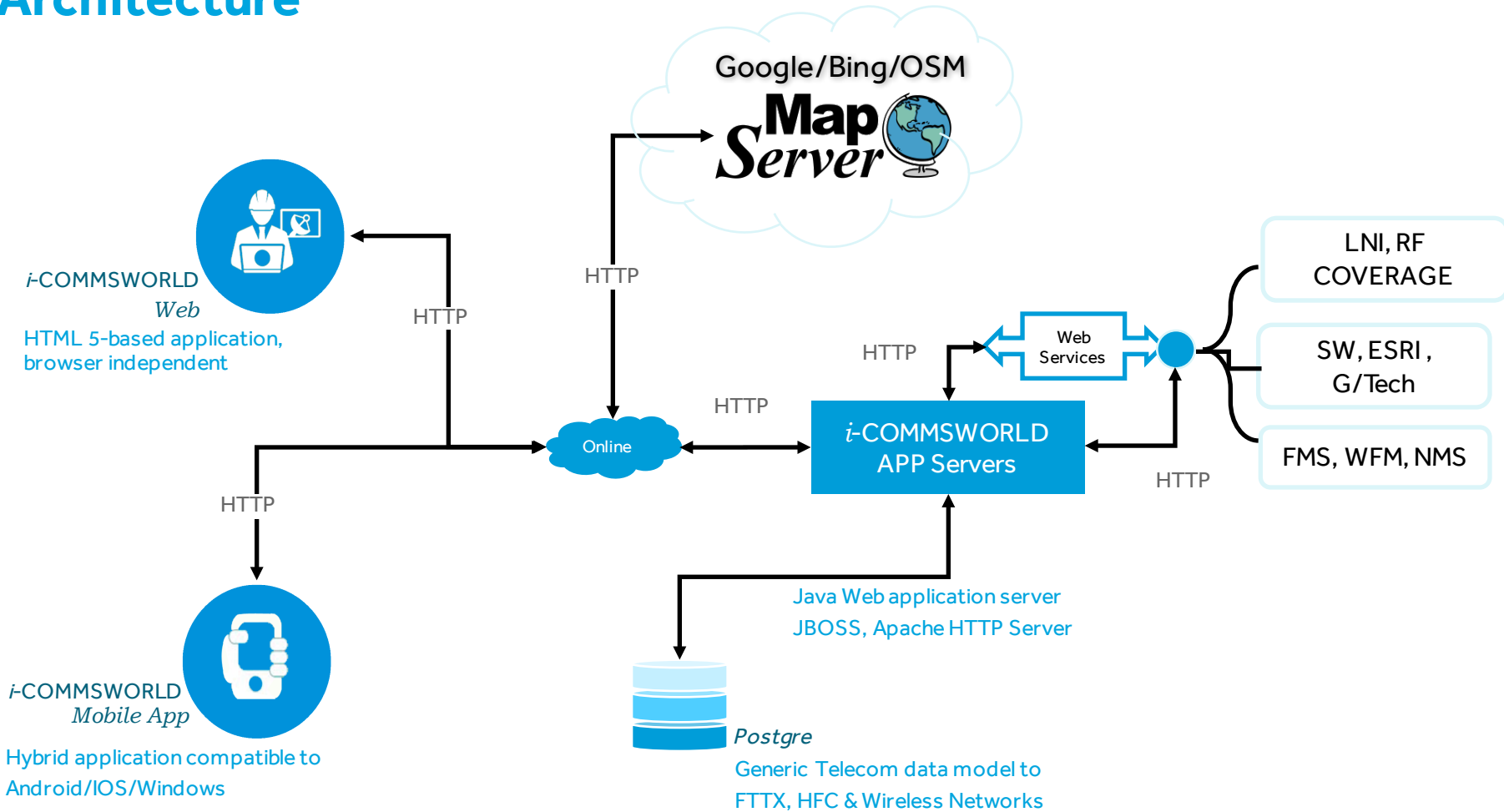
- **Configurable workflows for projects/tasks**
- **Link project /tasks to user groups**
- **Transitional states to approve/reject projects/tasks**
- **Triggers to initiate parallel activities while projects/tasks state changes (like emails and file uploads)**
- **Process the projects /tasks through multiples iterations**
- **Projects/tasks transition states linked to user groups**

Workflow-Driven Optimized P&D Processes



- Configurable workflows for projects/tasks
- Link project/tasks to user groups
- Transitional states to approve/reject projects/tasks
- Triggers to initiate parallel activities while projects/tasks state changes (like emails and file uploads)
- Process the projects /tasks through multiples iterations
- Single application for all business groups with seamless view of all network and tasks with status

Architecture





THANK YOU