



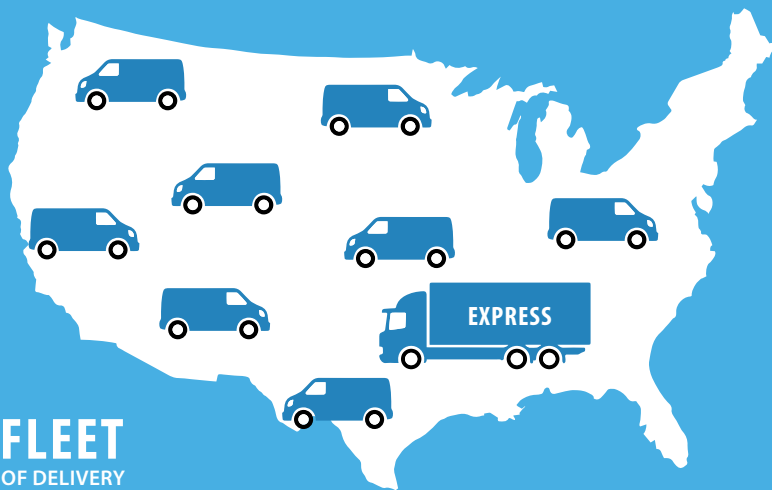
"Helping you and your patients look great!"



THE PITTMAN ADVANTAGE

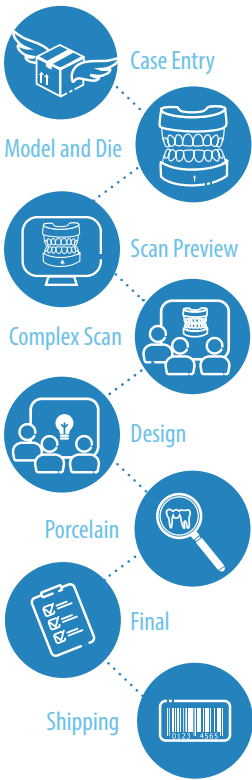


MORE DIGITAL IMPRESSION FILES
THAN ANY OTHER LABS IN THE **SOUTHEAST**



FLEET
OF DELIVERY
DRIVERS

8-STEP QUALITY CONTROL



ONSITE
CHAIRSIDE
CONVERSION



24HRS
7DAYS
DENTAL LAB

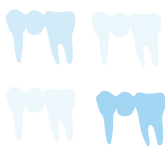
(1)

DAILY
CLIENT MAIL
UPDATES



**TRAINING &
EDUCATION**

TECHNOLOGY
ARTISTRY



**CUSTOM
SHADES**

**FULL ARCH
RESTORATION
TEMPORARY** **< 10 DAYS**



Our Mission:

To provide you high quality, accurate and efficient restorations that resemble the patient's natural teeth. We welcome you to consult with our implant specialty team to answer all of your questions and to set up a consultation to discuss your first case.

EMAIL US AT CONVERSIONS@PITTMANDENTAL.COM



ADVANCED ARTISTRY

THE LEADING LAB AUTHORITY ON DIGITAL IMPRESSIONS.

Founded in 1974, Pittman Dental Laboratory has built a reputation of quality and service utilizing the very best in technology. Started as a family-owned company over 45 years ago, we place a high value on our customers, both Practice and Patient, and we vow to use only the highest quality materials and craftsmanship because our success depends on your success.

Pittman Dental Laboratory provides the highest quality materials and craftsmanship for the dental industry. Because of our reputation for quality and service, we are supplying doctors throughout the United States. If you are looking for a reliable dental laboratory for your practice and clients, Pittman Dental Laboratory is here for you.

PITTMAN TECHNOLOGY AND ARTISTRY

Industries throughout the world are benefiting from advances in technology which enhance current products and creates new ones. The dental industry is no exception. Three-dimensional imaging and printing are some of these advances. Stronger materials and fabrication have enabled doctors to provide better quality and assurance for their patients.

However, technology is only one piece of the puzzle. Doctors not only rely on the dental laboratories to invest in this new technology but also to marry it with artistry and pride. What good is technology if your dental technicians can't provide the attention to detail, dexterity and artistic touch that so many products demand.

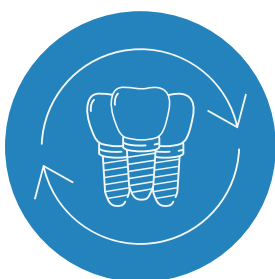
Pittman Dental Laboratory provides both, state of the art technology combined with the best dental artists. We call them artists because that is who they are. From modeling and molding to color correction and enhancement to the actual mechanics of the device, our artists cover the need of doctors and patients throughout the country. Pittman Dental Laboratory also provides continuing education for our artists to keep up with the ever-changing technology.

TECHNOLOGY + ARTISTRY



PRODUCTS/SERVICES

Pittman Dental Laboratory is one of the largest dental labs in the Southeastern United States. Despite our large size, we are able to offer our clients individualized attention and service. By designating a selected team of talented individuals to work with each of our clients, Pittman ensures predictable, beautiful results and accuracy.



IMPLANT RESTORATION

With a highly-skilled team of certified dental technicians, Pittman is known for the quality, accuracy and speed of our restorations. Once you send your digital scans or impressions, the turnaround time is approximately 8 to 10 days from start to finish. We fabricate models and use our own 3D printers to print guides. We also digitally restore most implant cases to ensure the highest level of accuracy, reducing the risks and uncertainties introduced by human factors. Our lab uses high quality zirconia, PMMA, ceramic and titanium and are fully equipped to design CAD/CAM custom abutments and milled-titanium bars.



CROWN AND BRIDGE

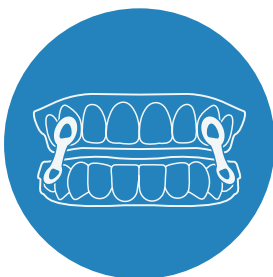
Pittman offers a wide variety of crowns and bridges, including:

LUMAX: Highly aesthetic with increased flexural strength.

IPS E.MAX: Outstanding aesthetics, user-friendly system.

DIAMANTE BRUXER: Entirely Zirconia with a 5-year, no breakage guarantee.

DIAMANTE: High translucency and medical grade strength.



APPLIANCES

Maxillary Anterior Passive Appliance

The MAPA® (Maxillary Anterior Passive Appliance) is one of the most significant advancements in TMD therapy in over 35 years.

Other appliances include Elastic Mandibular Advancement Appliances, Deprogrammers, Mini, Cranham, and Kois Deprogrammers.

QUALITY + ACCURACY + SPEED

SURGICAL GUIDES

360 Anatomical Guides: 360ips™ Surgical Guides are a custom-made, patient specific surgical guides, this specificity ensures a high level accuracy of implant placement following the virtual surgical treatment plan.

GuidedSMILE: GuidedSMILE delivers anchored bite verification, anchored bone reduction, anchored site drilling, accurate anchored pre-visualization, and a method of transferring all surgical and restorative information for the final restorative conversion phase.

DENTURE AND PARTIALS

Pittman offers a wide variety of dentures and partials which we stand by with a 5-year warranty.

PITTMAN DENTURES: Controlled polymerization shrinkage for optimal accuracy of fit and reduced residual monomer.

PITTMAN PARTIALS: TCS® and Valplast®, a flexible denture base resin. This bio-compatible nylon thermoplastic allow your patient's natural tissue tone to appear.

DIGITAL IMPRESSION SYSTEMS

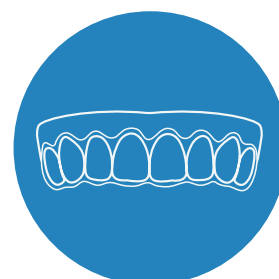
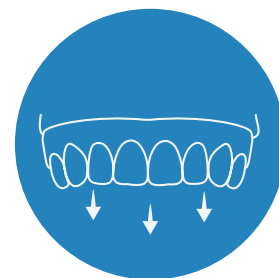
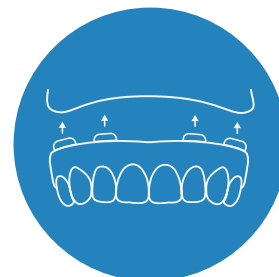
We offer a true complement of digital scanning solutions. We work with all major impression scanners: Cadent iTero™, Carestream, 3M True Def®, Sirona CEREC®, Emerald PlanScan™, and 3Shape Trios®.

ORTHODONTICS

Invisible Retainer: Improvements in materials have led to invisible retainers lasting longer and becoming the option of choice for the appearance-conscious patient.

Hawley Retainer with Ball Clasps: An acrylic plate, cuspid to cuspid Hawley labial arch, and ball clasps between second bicuspids and first molars.

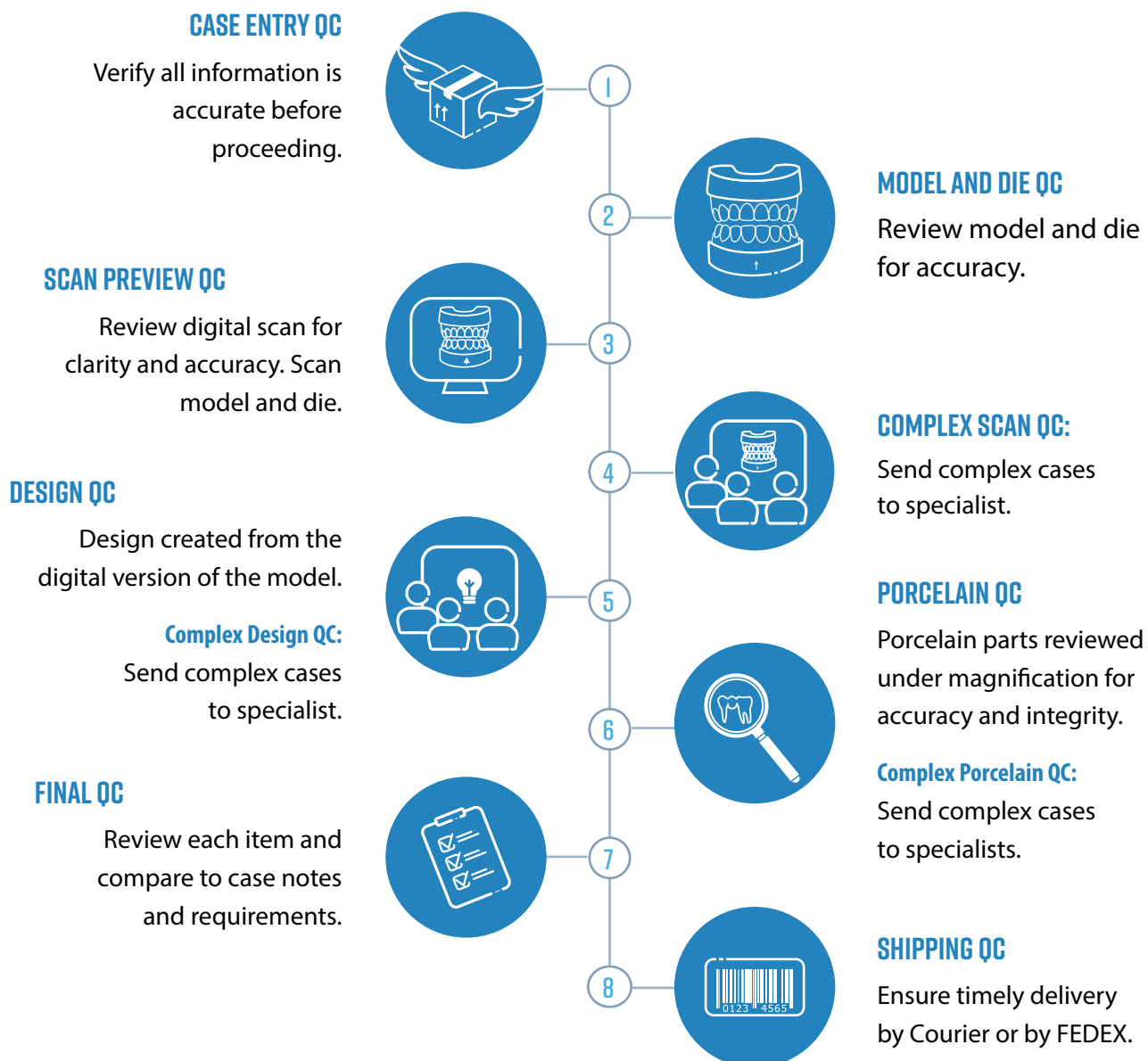
Athletic Mouth Guard / Soft Night Guard: A custom fitted athletic mouth guard also called a soft night guard can protect the jaw-line bone, teeth, lips, and cheeks from injury.

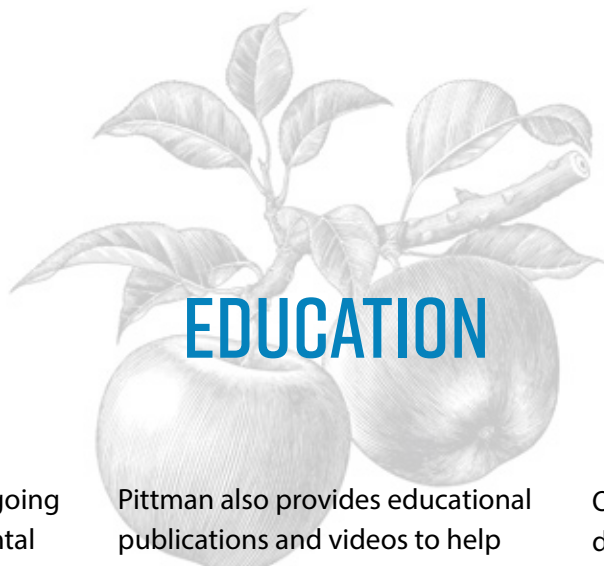


QUALITY CONTROL

PITTMAN'S 8-STEP QUALITY CONTROL PROCESS

For over 40 years, Pittman Dental Laboratory has been providing quality products and services to dental care providers. These products and services have been built around a premiere quality control system including the physical layout of the labs. Pittman has also assembled a diverse team of experts with decades of experience in the design and manufacturing as a pivotal part of this quality control system. These experts step in when complex cases require added scrutiny and evaluation. The eight steps below highlight the path your case will follow when you entrust it to Pittman Dental Laboratory.





EDUCATION

Pittman Dental Lab offers ongoing in-house training for your dental team on using our products and services as well as special marketing education on how to talk to new-patient opportunity and demonstrate the value of implants and related services. Pittman Dental Laboratory is dedicated to providing Master Classes on different techniques available to our doctors. These Master Classes are provided by Pittman Dental Laboratory in different cities across the country.

Pittman also provides educational publications and videos to help you grow the services your practice offers. Another benefit of being a Pittman client is the chairside services that we offer. Skilled technicians can be onsite to assist you with various procedures. Pittman's goal is to make you and your patient look great!

Our territory managers are certified digital impression specialists who can train you and your staff demonstrating the ease and reliability of digital impression technology.

This service is currently available in the following states: Florida, Georgia, Kentucky, North Carolina, South Carolina and Tennessee. To schedule a lunch and learn or live patient scan, please call 800-235-4720.





OUR HAPPY CLIENTS

Dr. Bernee Dunson

Implantologist and President, The American Academy of Implant Dentistry

“I worked with Pittman on one of my guided full arch cases. Their, CDT, Ray was an excellent resource during the conversion. Everything was smooth and easy from start to finish, will definitely use them again.”

**DUNSON
DENTAL DESIGN**

**GWINNETT
DENTAL IMPLANT
CENTER**

Doctor Melody Schiffer

Periodontist

“Pittman’s work is always high quality and accurate. I do a lot of full arch conversions with them and I absolutely love love love working with Ray for my chair-side cases. I actually love the entire implant team, Shane, Ashley & Josh. . . They are a great lab!

Dr. Jennifer Johnson Okhiera

MaxilloFacial Oral Surgeon

“Pittman Dental Lab is an easy lab to work with, they are always very responsive, great restoration, easy to upload on their site and great customer service.”

**GREAT
EXPRESSIONS
DENTAL
CENTERS**

**STRAUMANN
GROUP**

Shanna Flood

Field Implant Specialist

“I’m in Florida and recommend Pittman to a lot of my accounts for their implant cases. They are extremely fast, affordable, great quality and they know how to restore a lot of tough cases. I actually have a Pittman restoration in my own mouth, and I couldn’t be happier.”

FAQS

Q HOW DO I SEND MY FIRST CASE?

A Go to our Doctor Portal on our website, click on "Supply Request" and download RX's. Schedule a pick up by clicking on "Pick Up and Delivery Request". If you are outside our pick up area, under "Supply Request" you can order FedEx labels. (<https://www.pittmandental.com/doctors-portal>)

Q CAN I USE THE BOX AND SCRIPT FROM ANOTHER LAB?

A Absolutely, feel free to use the supplies you already have and when we receive your first case our team will immediately send you a care package to get started.

Q WHAT IS PITTMAN CONNECT?

A Pittman Connect allows you to track your individual cases through production and send notes directly to the technician working on your case. "Pittman Connect" can be found in the "Doctor Portal" on the website. (<https://www.pittmandental.com/doctors-portal>)

Q HOW DO I SET UP MY PITTMAN CONNECT ACCOUNT?

A Go to the "Doctor Portal" on the website, click on "Pittman Connect" icon. Click on create "New Account" and follow the instructions. (<https://www.pittmandental.com/doctors-portal>)

Q HOW ARE CASES INVOICED AND WHAT ARE YOUR TERMS?

A You will receive a invoice with the each case and then a final statement at the end of the month which is net 30.

Q WHAT ARE YOUR TURNAROUND TIMES?

A Bruxer, ALL Ceramic, PFM8 Days
Fullcast Dentures/Partials.....8 Days
Set Up/Trying8 Days
Finish.....4 Days

Q WHERE DO I GO TO UPLOAD A CBCT?

A Go to the Doctor Portal on the website and then click on send STL File. (<https://www.pittmandental.com/doctors-portal>)

Q HOW DO I SEND YOU MY SHADE IMAGES?

A Send to Support@pittmandental.com.

Q WHAT ARE THE INDICATIONS AND CONTRAINDICATIONS FOR THE CROWN MATERIALS YOU OFFER?

A For this information visit our website. (<https://www.pittmandental.com/crown-and-bridge>)

Q HOW DO I KNOW WHICH SURGICAL GUIDE IS RIGHT FOR ME?

A Not all surgical guides are going to be the right fit for you or for your patient. As experts in this field we are happy to work you through the pro and cons of each system and help identify the right fit for you. Please email conversions@pittmandental.com to set up a virtual meeting today.

Q HOW DO I ADD PITTMAN DENTAL LABORATORY AS A LAB PROVIDER ON MY INTRAORAL SCANNER? WHAT INTRAORAL SCANNER DO YOU RECOMMEND?

A Pittman receives and works with digital files from all scanners on the market. Technology has progressed to the point that accuracy is no longer a concern when making your purchase. One recommendation we would make is pay close attention to the training that is being offered with the purchase of the scanner as well as the replacement warranty, this will certainly help you determine the right fit for your practice.

Q CAN PITTMAN HELP ME WITH MY SCANNER?

A Absolutely, if you already purchased a scanner and would like in office training please email support@pittmandental.com. Our Field representatives are certified trainers with almost every popular brand and have successfully retrained hundreds of practices.

Q DO YOU PREFER DIGITAL IMPRESSIONS OVER TRADITIONAL IMPRESSIONS?

A The ADA reports around 6% of crowns are remade when using traditional Impressions. At Pittman, less than 1% of our crowns are sent back for to be remade when utilizing an intraoral scanner.



PITTMAN DENTAL LABORATORY WAS
FOUNDED IN 1974 AS A FAMILY-OWNED

BUSINESS WITH A REPUTATION BUILT ON QUALITY

AND SERVICE UTILIZING THE VERY BEST IN TECHNOLOGY. ALTHOUGH
OUR ORGANIZATION HAS SEEN NATIONAL GROWTH OVER THE YEARS, WE STILL
PROVIDE VALUE TO OUR CUSTOMERS BOTH PRACTICE AND PATIENT, AND WE VOW
TO USE ONLY THE HIGHEST QUALITY MATERIALS AND CRAFTSMANSHIP BECAUSE
OUR SUCCESS DEPENDS ON YOUR SUCCESS.



2355 Centennial Circle
Gainesville, Georgia 30504



www.pittmandental.com



(800) 235-4720



support@pittmandental.com