

## Installation and Battery Change Instructions

# Quick Mount Keypad

for use with S&G 6120, 6123, Titan 2006 and  
Spartan™ 1006 PivotBolt Safe Locks

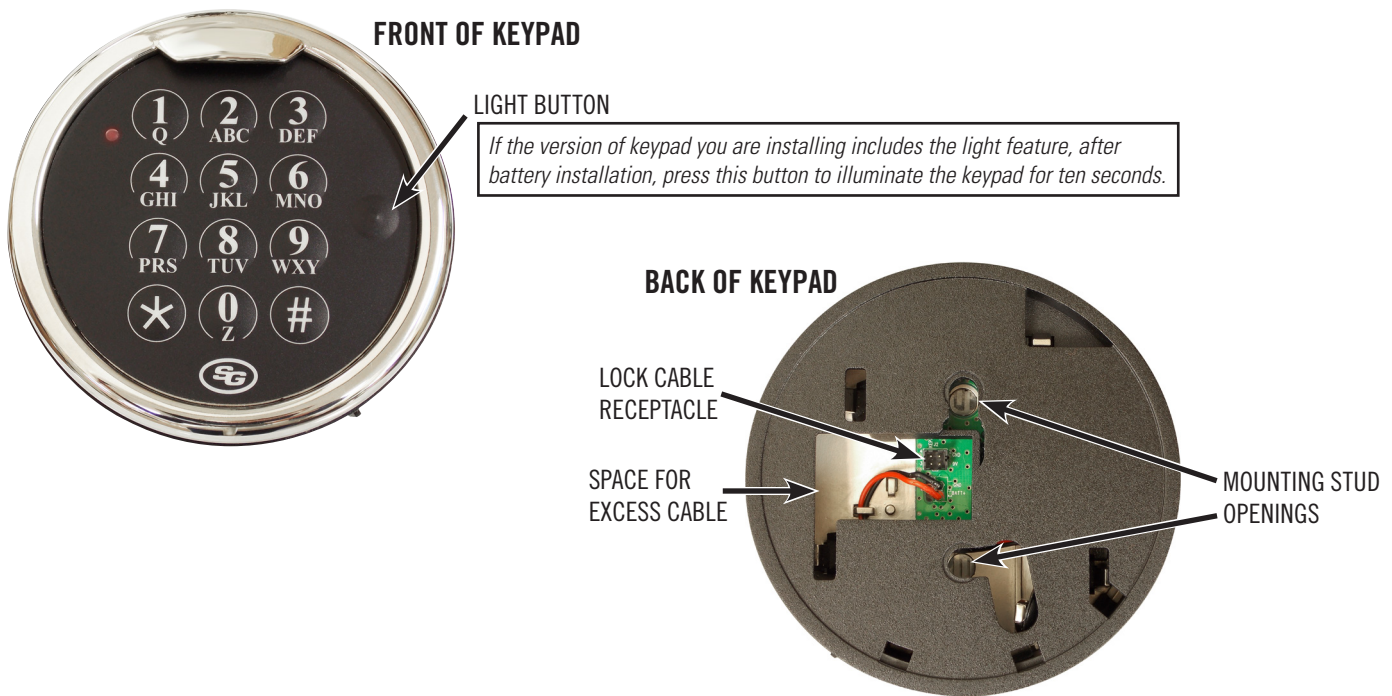


### MOUNTING CONSIDERATIONS

- Sargent & Greenleaf Quick Mount Keypads are designed with the same mounting screw locations as most other S&G locks, both mechanical and electronic, to simplify retrofit.
- Modifications to the keypad are not recommended and will void the product warranty.
- The Quick Mount Keypad will accommodate one 9-volt battery. S&G recommends fresh Duracell® brand batteries. Do not use old or partially drained batteries.

### BEFORE YOU INSTALL

Your S&G electronic safe lock should be installed inside the safe door first, following the instructions with which it is packaged. The lock cable should be extending through the door's spindle hole to the outside of the safe.



**Attaching Screws:** Use only the screws provided with the keypad. Mounting screws will be either 8-32 or M4, depending on the application. They must engage the mounting surface (safe door) by at least four full threads. Do not use thread sealing compounds as these may weaken the keypad base material.

**Recommended Attaching Screw Torque:** No more than 15 inch-pounds (1.695 Nm) for the keypad attaching screws.

**Minimum Lock Cable (Spindle) Hole Diameter:** 0.312" (7,9 mm)

**Maximum Lock Cable (Spindle) Hole Diameter:** 0.406" (10,3 mm)

**Code Restrictions:** Personal data that can be related to a code holder, such as a birth date, street number, or phone number, should not be used in creating a lock code. Avoid codes that can be easily guessed.

**Note:** Every installation of this product must comply with these requirements and those in the product installation instructions to qualify for the manufacturer's warranty and to comply with EN1300 requirements.

Sargent & Greenleaf, Inc.  
PO Box 930  
Nicholasville, KY 40340-0930  
Phone: (800)-826-7652 Fax: (800)-634-4843  
Phone: (859)-885-9411 Fax: (859)-887-2057

Sargent & Greenleaf S.A.  
9, Chemin du Croset  
1024 Ecublens, Switzerland  
Phone: +41-21 694 34 00  
Fax: +41-21 694 34 09

### Step 1

Place the metal collars over the keypad mounting screws.

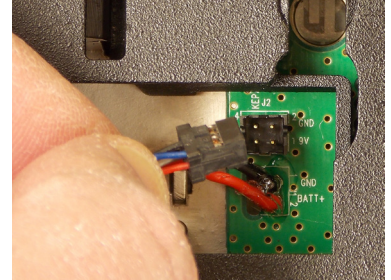
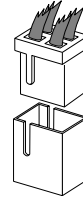


Then install the screws into the keypad mounting holes in the safe door. Note that the lock is already installed, and its cable is coming through the spindle hole.



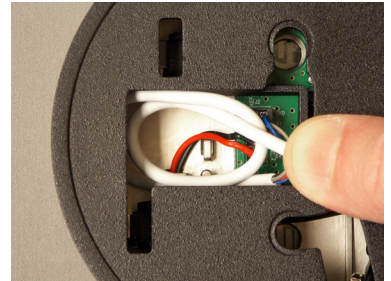
### Step 2

Plug the lock cable into the receptacle in the back of the keypad. Align the raised ridges of the plug with the offset slots in the receptacle.



### Step 3

Coil the excess lock cable into the space provided in the back of the keypad. As you move the keypad up against the safe door (over the mounting screws you installed in Step 1), be sure to place any excess cable into the back of the keypad so that no cable will be pinched between the back of the keypad and the safe door.



### Step 4

In order to place the back of the keypad over the mounting screws and flat against the safe door, you will have to angle the keypad to about an eleven o'clock position, as shown at the right. Once the keypad is flat against the safe door, pull it down in the direction indicated by the arrow, until it comes to a positive stop. The movement will be less than ½ inch.



Watch a short removal/installation video: <http://www.sargentandgreenleaf.com/QM>



### Step 5

Now turn the keypad clockwise a few degrees until it comes to a stop. The columns of numbers should now be straight up and down. Your installation is complete.

Before closing the safe door, and after installing a battery (as shown below), test the lock and keypad operation by following the operating instructions for your lock.



### Battery Installation / Changing

A sliding door at the bottom of the keypad provides access to the battery. Slide the door to the left to open. S&G recommends Duracell® brand 9-volt alkaline batteries for its locks. Simply snap a battery onto the connectors, place the battery inside the keypad, make sure all wires are completely inside the keypad, and slide the compartment door to the right until it's fully closed.

