

Complete **verifiable** and **auditable** control over **access** to your facilities.



Softworks Access Control

Softworks Access Control Software gives you complete verifiable and auditable control over access to your facilities. Integrated with a host of standard hardware options it delivers a powerful approach to facilities management and security.

At a Glance, The Benefits:

Protects Your Assets

Softworks Access Control allows you to authorise, monitor, report on and manage access to your premises. Enabling you to control access to restricted areas within a building or premises and ensure that valuable equipment and sensitive information are fully protected.

Softworks Access Control can be installed as a stand-alone solution or as a fully integrated module within the suite of Softworks Workforce Solutions that include Time & Attendance, Scheduling, Project Management and Absence control.

Improves Security

Select from a range of access management technologies including:

- RFID
- Magnetic Stripe
- Mifare
- Bar Code
- Proximity
- Biometric

Security can be further enhanced by the addition of a keyword requiring employees to enter their own personal identification number (PIN). Access readers can be placed internally or externally ensuring greater access control and cards can also contain photo identification for further security.

Enhances Safety

Safety assurance & compliance within facilities management is a critical element of any modern business.

In the event of an emergency, Softworks access control can help speed up the evacuation process and allow you to quickly account for staff on the premises. It can also be used to control access to and monitor activity in sensitive areas for health and safety purposes.

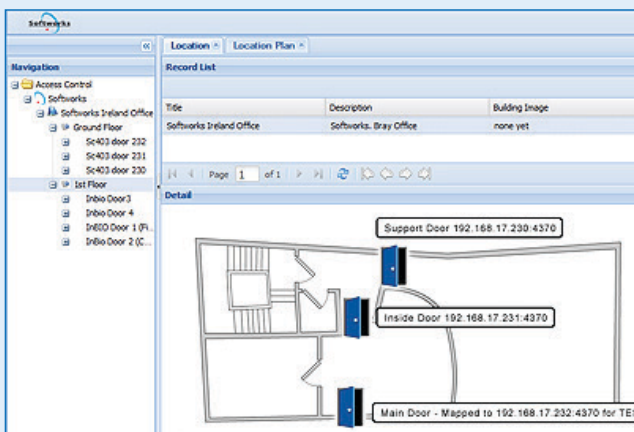
Realtime Reporting Highlights...

Door/Area Access History - Shows all access attempts made to any given door/area. This report can be useful in determining who was in a particular section of a premise at any given time, or indeed if someone was trying to gain access and did not have the right to do so. This report can be generated for one or more selected doors, over a specified date and time range and can show permitted accesses, failed accesses or both.

Employee Access History - Shows all access made by a selected individual between specified dates and times. The report also shows the reason why a particular access attempt may have failed

Features:

- Browser-based Interface.
- 3rd Party Hardware Integration for Cameras & Devices.
- Verifiable Access Audit Trail.
- 3D/2D Building Visualisation - Set Alarms for Specific Doors.
- Multi-Company, Multi-Site Availability.



Plus...

Door Access Schedules - Ability to pre-allocate access rights to individual areas and within specific time-bands.

Personnel Details - Stores key contact information for employees, contractors and visitors alike.

Exception Reports - Highlights exceptions and violations identifying the use of non-standard badges, attempted access to areas of the building where employees have restricted access.