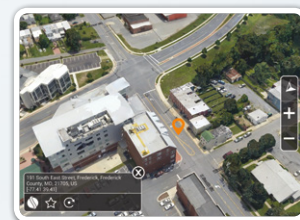
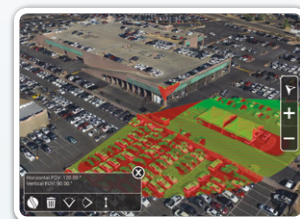


TerraExplorer for Mobile

A professional-grade 3D geospatial app for viewing, querying, analyzing and editing massive datasets on the go.

As part of the SkylineGlobe enterprise solution for building and serving customized virtual 3D landscapes, TerraExplorer Mobile can stream 3D geospatial data from SkylineGlobe and OGC servers, as well as store and access data for offline use.

The app offers a comprehensive set of geospatial capabilities, including feature layer streaming and editing, raster layer overlay, measurements, dynamic viewshed and shadow analysis, white board, and more.





Data Fusion

Wide range of imagery, elevation, 3D city and feature data combined into a single virtual 3D environment.



Measure and Analyze

Advanced analysis tools, including terrain distance and area, viewshed, terrain profile, and shadow analysis, as well as contour and slope maps, provide a thorough understanding of the 3D environment.



Online and Offline

The app accesses data online, from SkylineGlobe's TerraGate and other OGC compliant servers, or offline, loading local projects created by the TerraExplorer Pro publishing tool.



Data Query

Address/point of interest search capability along with advanced feature layer queries enable you to access and display the 3D environment information you require.



Data Update

Easily edit feature layer geometry and attribute data. Then instantly update the enterprise database or share a screenshot that says it all.



Customizable

Advanced application customization for developers allows editing of the user interface and addition of targeted functionalities using a robust application programming interface (API).



Available on AppStore
and on Google play

Technical support: support@skylinesoft.com
General information: info@skylinesoft.com