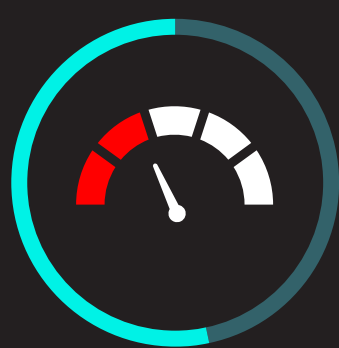


Enterprise Ransomware Hits Where It Hurts



63% Vulnerabilities affect critical server, web, and data infrastructure

Aims Below The Radar



53% Vulnerabilities had a CVSS v2 score of less than 8

Targets Old Exposure



32% Vulnerabilities are 4 years old or more

Are Repeat Offenders



30% Vulnerabilities were targeted by multiple ransomware families

- Cerber
- GandCrab
- Ryuk
- SamSam
- Sodinokibi
- and many more

RiskSense Spotlight Report: Enterprise Ransomware

Through the Lens of Threat and Vulnerability Management

[READ IT NOW](#)



All data based on enterprise ransomware vulnerabilities actively trending in the wild in 2018 or 2019.