



HONEST BUILDINGS

# Data-Driven Project Management + Procurement

PURPOSE-BUILT FOR COMMERCIAL REAL ESTATE OWNERS AND MANAGERS

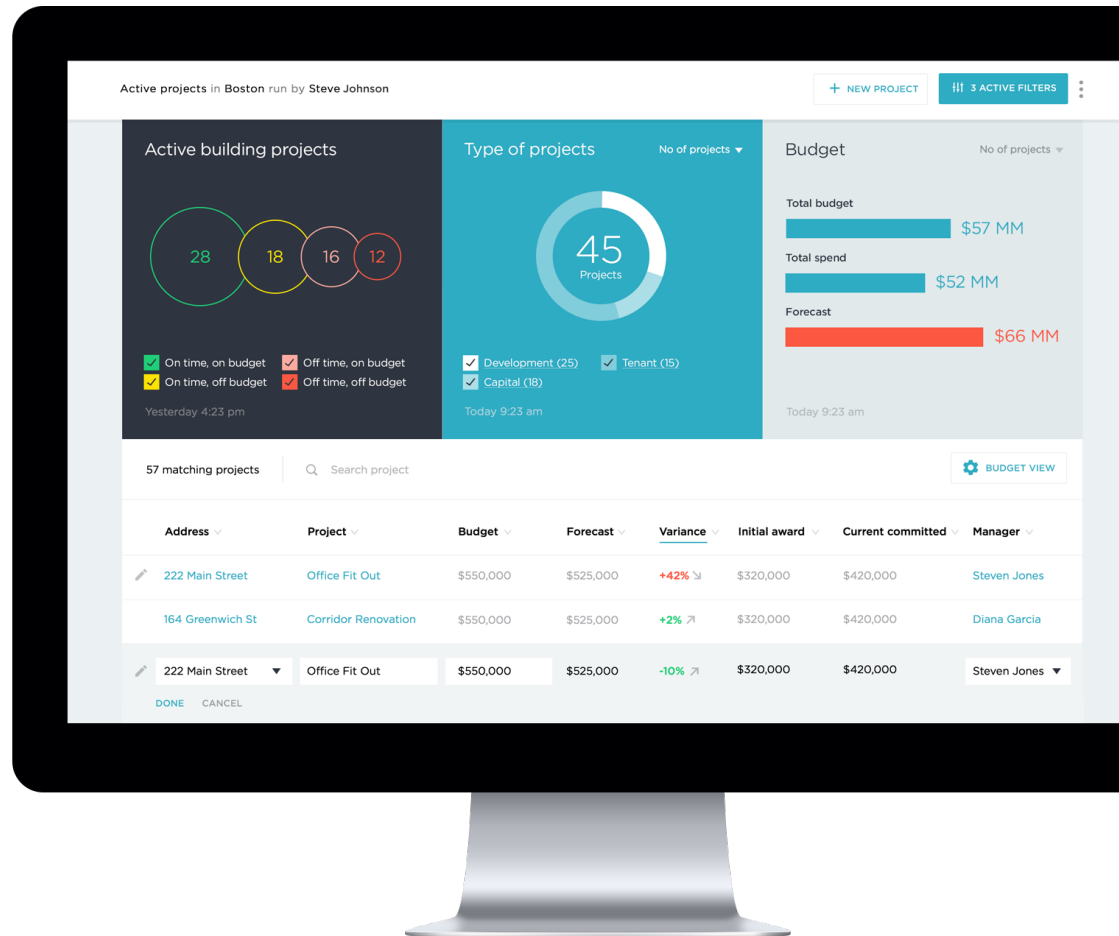


Beacon has always adopted new technology to maintain its position as a savvy market leader. It is critical to be able to **easily access and exchange the most up-to-date information on capital projects** and service contracts happening across our national portfolio. The Honest Buildings platform allows our entire team to be on the same page with accurate, real-time data.”



Sara Shank, Head of Portfolio Management

**BEACON CAPITAL PARTNERS** | *National office portfolio owner with over 24 million SF owned/managed globally.*



Learn more:  
[HONESTBUILDINGS.COM](https://www.honestbuildings.com)

THE LARGEST CRE OWNERS HAVE MANAGED AND TRACKED OVER \$1 BILLION IN CAPITAL PROJECTS USING HONEST BUILDINGS



RELATED

BEACON  
CAPITAL PARTNERS



Rudin

MRP | REALTY