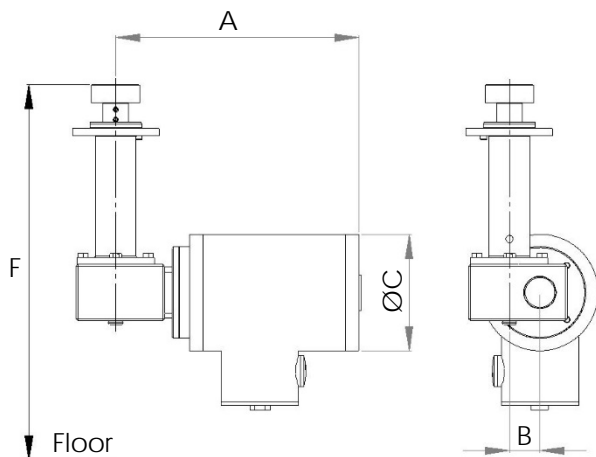


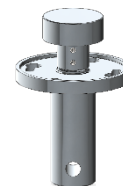
Metenova Mixer ZG3 Drive Unit SS



Option 1:
RPM Sensor, Mix Head

Option 2:
RPM Sensor, Shaft reading

Option 4:
Transport Locking Device



Part #	Description	
ZG52502-S00427	ZG3 Drive Unit AC E100 SS Motor & Gear Box	
ZG00014-03083	RPM Sensor, Mix Head	Option 1
ZG00014-03193	RPM Sensor, Shaft	Option 2
ZG12016-01775	ZG3 Transport Locking Device	Option 4

A mm (in)	B mm (in)	ØC mm (in)	F mm (in)	Weight kg (lb)
240 (9.46)	30 (1.18)	114 (4.49)	380 (14.9)	12 (26.5)

Motor: 0.18 kW/ 0.24 hp @ 50 Hz / 0.22 kW/ 0.30 hp @ 60 Hz (2-pole - 7:1 Gear Box)
 Voltage: Δ230 / Y400 VAC @ 50Hz / Y460 VAC @ 60Hz (±5%)
 Current: 0.75A @ 230V/50Hz - 0.45A @ 400V/50Hz - 0.40A @ 460V/60Hz (±5%)
 Efficiency Performance Class: IE2
 Thermistors: 2
 Certified: CE / UL
 Protection class: IP 66
 Environment temp: 0°C - 40°C (32°F - 104°F)
 Min - Max rpm: 50 - 490
 Enclosure: Stainless Steel
 Gear box oil: Food grade in compliance with FDA



- VFD with soft start must be used when operating the mixer.
- Items are individually packed and for traceability purposes marked with item & id no.
- Metenova Quality Assurance System ensures the quality and traceability at all stages of the process.

Option 1: RPM Sensor, Mix Head

Option 2: RPM Sensor, Shaft

Pulses/turn:	1	4
Output function:	3-wire, NO contact PNP	4-wire, NO/NC contacts PNP
Indicator:	Yellow LED	Yellow LED
Temperature range:	-25°C-70°C (-13°F-158°F)	-25°C-70°C (-13°F-158°F)
Operating voltage:	10..65 VDC	10..30 V
Protection class:	IP67	IP67

Option 4: Transport Locking Device

Secures the Mix Head in place when transporting the tank without Drive Unit attached.