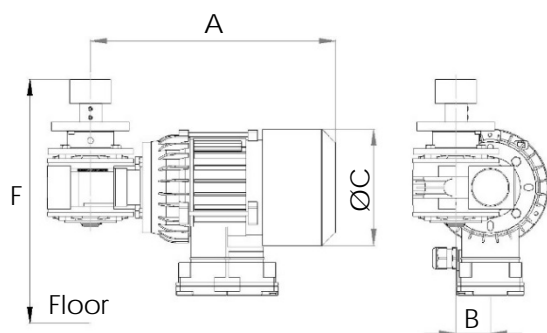


Metenova Mixer ZG5 Drive Unit



Option 1:
RPM Sensor, Mix Head



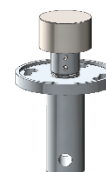
Option 2:
RPM Sensor, Shaft reading



Option 3:
Lowering Device



Option 4:
Transport Locking Device



Part #	Description	
ZG52502-D00442	ZG5 Drive Unit AC, E0, IE3, IP66	
ZG00014-03083	RPM Sensor, Mix Head	Option 1
ZG00014-03193	RPM Sensor, Shaft	Option 2
ZG52502-02000	ZG5 Lowering Device E0	Option 3
ZG52016-01776	ZG5 Transport Locking Device	Option 4

A mm (in)	B mm (in)	ØC mm (in)	F mm (in)	Weight kg (lb)
285 (11.22)	40 (1.57)	135 (5.31)	280 (10.0)	9,0 (19.8)

Motor:	0.37 kW/0.50 hp @ 50 Hz / 0.44 kW/0.60 hp @ 60 Hz (2-pole - 7:1 Gear Box)
Voltage:	Δ230 / Y400 VAC @ 50Hz / Y460 VAC @ 60Hz (±5%)
Current:	1.75A @ 230V/50Hz - 1.0A @ 400V/50Hz - 1.0A @ 460V/60Hz
Efficiency Performance Class:	IE3
Thermistors:	2
Certified:	CE / C-UL-US
Protection class:	IP 66
Environment temp:	0°C - 40°C (32°F - 104°F)
Min - Max rpm:	50 - 490
Color:	In compliance with FDA
Gear box oil:	Food grade in compliance with FDA



- VFD with soft start must be used when operating the mixer.
- Items are individually packed and for traceability purposes marked with item & id no.
- Metenova Quality Assurance System ensures the quality and traceability at all stages of the process.

Option 1: RPM Sensor, Mix Head

Pulses/turn:	1
Output function:	3-wire, NO contact PNP
Indicator:	Yellow LED
Temperature range:	-25°C-70°C (-13°F-158°F)
Operating voltage:	10..65 VDC
Protection class:	IP67

Option 2: RPM Sensor, Shaft

Pulses/turn:	4
Output function:	4-wire, NO/NC contacts PNP
Indicator:	Yellow LED
Temperature range:	-25°C-70°C (-13°F-158°F)
Operating voltage:	10..30 V
Protection class:	IP67

Option 3: Lowering Device

Allows preventative maintenance of Mix Head and Male Post without having to remove the Drive Unit from the tank.

Option 4: Transport Locking Device

Secures the Mix Head in place when transporting the tank without Drive Unit attached.