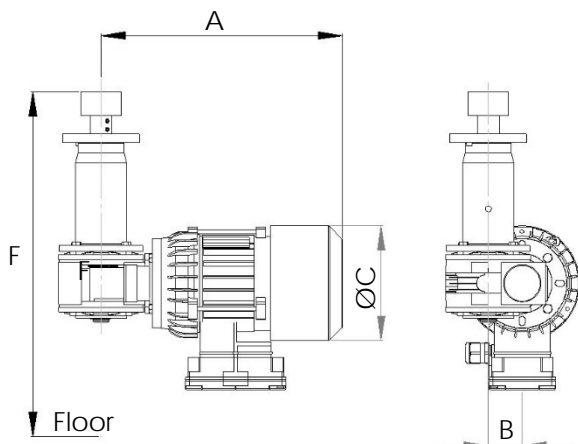


Metenova Mixer ZG5 Drive Unit



Option 1:
RPM Sensor, Mix Head



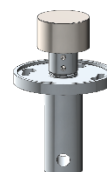
Option 2:
RPM Sensor, Shaft reading



Option 3:
Lowering Device



Option 4:
Transport Locking Device



Part #	Description	
ZG52502-F00428	ZG5 Drive Unit AC, E100, IE3	
ZG00014-03083	RPM Sensor, Mix Head	Option 1
ZG00014-03193	RPM Sensor, Shaft	Option 2
ZG52502-02001	ZG5 Lowering Device E100	Option 3
ZG52016-01776	ZG5 Transport Locking Device	Option 4

A mm (in)	B mm (in)	ØC mm (in)	F mm (in)	Weight kg (lb)
285 (11.22)	40 (1.57)	135 (5.31)	380 (14.9)	10.5 (23.1)

Motor: 0.37 kW/0.50 hp @ 50 Hz / 0.44 kW/0.60 hp @ 60 Hz (2-pole - 7:1 Gear Box)
 Voltage: Δ230 / Y400 VAC @ 50Hz / Y460 VAC @ 60Hz (±5%)
 Current: 1.75A @ 230V/50Hz - 1.0A @ 400V/50Hz - 1.0A @ 460V/60Hz
 Efficiency Performance Class: IE3
 Thermistors: 2
 Certified: CE / C-UL-US
 Protection class: IP 55
 Environment temp: 0°C - 40°C (32°F - 104°F)
 Min - Max rpm: 50 - 490
 Color: In compliance with FDA
 Gear box oil: Food grade in compliance with FDA



- VFD with soft start must be used when operating the mixer.
- Items are individually packed and for traceability purposes marked with item & id no.
- Metenova Quality Assurance System ensures the quality and traceability at all stages of the process.

Option 1: RPM Sensor, Mix Head

Pulses/turn: 1
 Output function: 3-wire, NO contact PNP
 Indicator: Yellow LED
 Temperature range: -25°C-70°C (-13°F-158°F)
 Operating voltage: 10..65 VDC
 Protection class: IP67

Option 2: RPM Sensor, Shaft

Pulses/turn: 4
 Output function: 4-wire, NO/NC contacts PNP
 Indicator: Yellow LED
 Temperature range: -25°C-70°C (-13°F-158°F)
 Operating voltage: 10..30 V
 Protection class: IP67

Option 3: Lowering Device

Allows preventative maintenance of Mix Head and Male Post without having to remove the Drive Unit from the tank.

Option 4: Transport Locking Device

Secures the Mix Head in place when transporting the tank without Drive Unit attached.