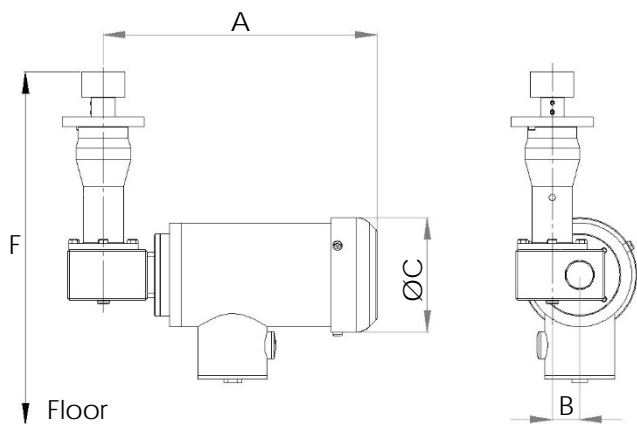


Metenova Mixer ZG5 Drive Unit SS



Option 1:
RPM Sensor, Mix Head



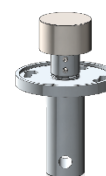
Option 2:
RPM Sensor, Shaft reading



Option 3:
Lowering Device



Option 4:
Transport Locking Device



Part #	Description	
ZG52502-S00428	ZG5 Drive Unit AC E100 SS Motor & Gear Box	
ZG00014-03083	RPM Sensor, Mix Head	Option 1
ZG00014-03193	RPM Sensor, Shaft	Option 2
ZG52502-02001	ZG5 Lowering Device E100	Option 3
ZG52016-01776	ZG5 Transport Locking Device	Option 4

A mm (in)	B mm (in)	ØC mm (in)	F mm (in)	Weight kg (lb)
300 (11.81)	30 (1.18)	125 (4.92)	380 (14.9)	14.5 (32)

Motor: 0.25 kW/0.33 hp @ 50 Hz / 0.30 kW/0.4 hp @ 60 Hz (2-pole - 7:1 Gear Box)
Voltage: Δ230 / Y400 VAC @ 50Hz / Y460 VAC @ 60Hz (±5%)
Current: 1.0A @ 230V/50Hz - 0.58A @ 400V/50Hz - 0.52A @ 460V/60Hz (±5%)
Efficiency Performance Class: IE2
Thermistors: 2
Certified: CE / UL
Protection class: IP 66
Environment temp: 0°C - 40°C (32°F - 104°F)
Min - Max rpm: 50 - 490
Enclosure: Stainless Steel
Gear box oil: Food grade in compliance with FDA



- VFD with soft start must be used when operating the mixer.
- Items are individually packed and for traceability purposes marked with item & id no.
- Metenova Quality Assurance System ensures the quality and traceability at all stages of the process.

Option 1: RPM Sensor, Mix Head

Pulses/turn: 1
 Output function: 3-wire, NO contact PNP
 Indicator: Yellow LED
 Temperature range: -25°C-70°C (-13°F-158°F)
 Operating voltage: 10..65 VDC
 Protection class: IP67

Option 2: RPM Sensor, Shaft

4
 4-wire, NO/NC contacts PNP
 Yellow LED
 -25°C-70°C (-13°F-158°F)
 10..30 V
 IP67

Option 3: Lowering Device

Allows preventative maintenance of Mix Head and Male Post without having to remove the Drive Unit from the tank.

Option 4: Transport Locking Device

Secures the Mix Head in place when transporting the tank without Drive Unit attached.